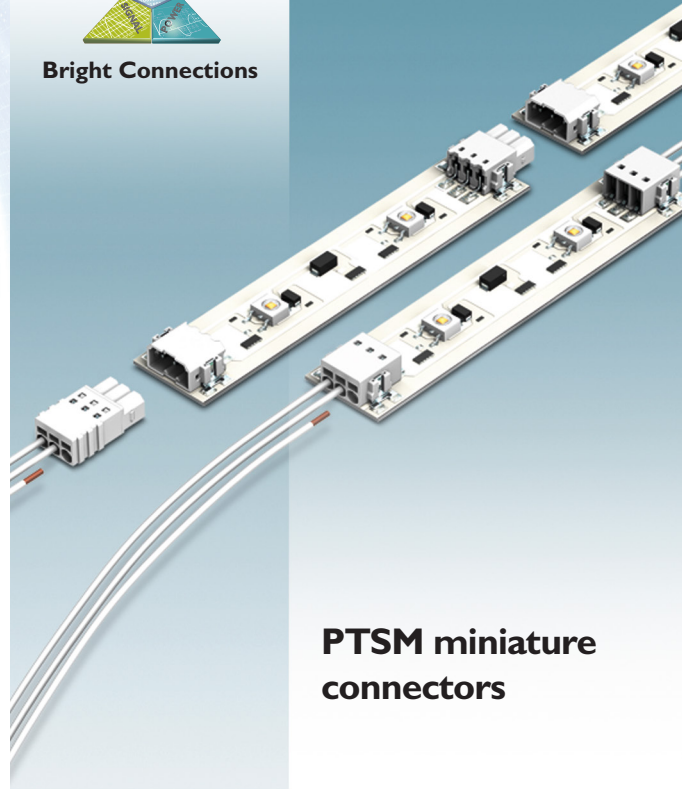




Bright Connections

More information:

www.phoenixcontact.com/lighting



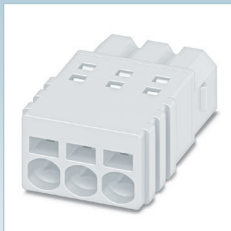
**PTSM miniature
connectors**

USA
PHOENIX CONTACT
P.O. Box 4100
Harrisburg, PA 17111-0100
Phone: 800-888-7388
717-944-1300
Technical Service: 800-322-3225
717-944-1625
Fax: 717-944-1625
E-mail: info@phoenixcon.com
Website: www.phoenixcontact.com

Fixed



Pluggable

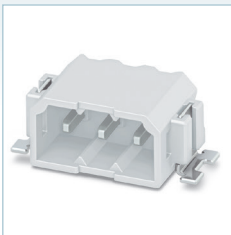


Through-board

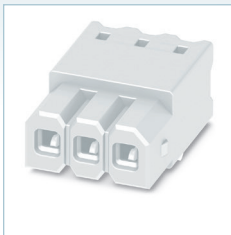


Centerline	2.5 mm
Wire range	26 – 20 AWG
Positions	1 – 8
Voltage	150 V
Current	5 A

Pluggable header

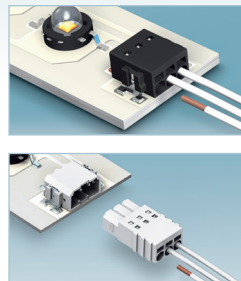


Inverted board-to-board

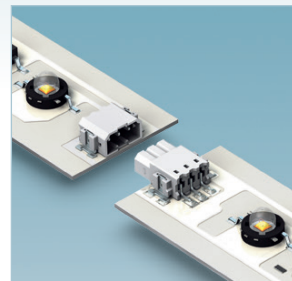


One series, multiple options

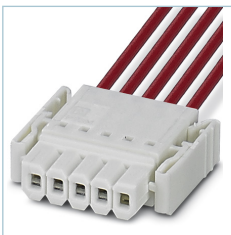
Wire-to-board



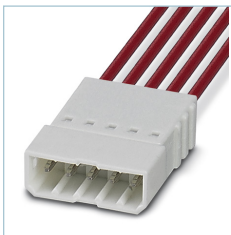
Board-to-board



Plug with latch



Inverted plug



Wire-to-wire

