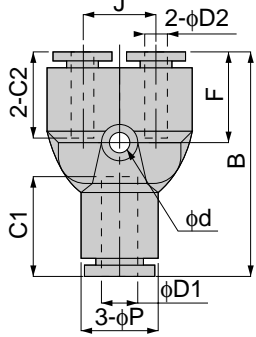


Tube Fitting Series SUS304 Type

unit:mm

PW SUS304

Different Diam. Union Y

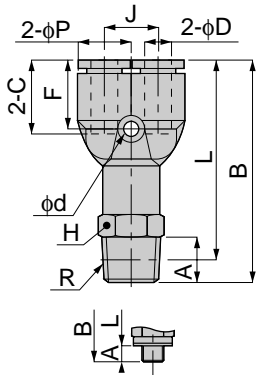


Model	Tube dia. φD1	Tube dia. φD2	B	φP	C1	C2	φd	F	Mass (g)	Orifice (φmm)	Eff. a. (mm ²)
PW 6-4SUS	6	4	37.5	13	17	15	3.2	15.5	10.5	3	4.2
PW 8-6SUS	8	6	42.5	15	18.5	17	3.2	17.5	14.5	4.6	10
PW 10-8SUS	10	8	48.5	18	20.5	18.5	4.2	19.5	23	6	16.5
PW 12-10SUS	12	10	55	21.5	23.5	20.5	4.2	22.5	35.5	7.5	27

unit:mm

PX SUS304

Branch Y



Metric thread type

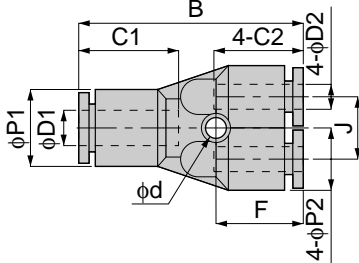


Model	Tube dia. φD	R	A	B	L	φP	C	J	H	φd	F	Mass (g)	Orifice (φmm)	Eff. a. (mm ²)			
PX 4-M5SUS	4	M5×0.8	3	38	35	10	15	11	10	3.4	14.5	12	1.8	1.5			
PX 4-M6SUS		M6×1	4	39											38		
PX 4-01SUS		R1/8	8	41	23								3	4.2			
PX 4-02SUS		R1/4	11	44													
PX 6-M5SUS	6	M5×0.8	3	41.5	37.5	13	17	12	12	3.2	16	16	1.8	1.5			
PX 6-M6SUS		M6×1	4	42.5	38.5										18	3	6.5
PX 6-01SUS		R1/8	8	44.5	40.5								25	4.6			
PX 6-02SUS		R1/4	11	47.5	41.5										39	6	16.5
PX 6-03SUS		R3/8	12	49.5	43.5								42.5	8			
PX 8-01SUS		R1/8	8	49	45										23.5	6	16.5
PX 8-02SUS	R1/4	11	52	46	29.5	9	37										
PX 8-03SUS	R3/8	12	53.5	47				42.5	8	37							
PX 10-01SUS	10	R1/8	8	55.5	51.5	18	20.5				18	17	4.5	20	42.5	7.5	30
PX 10-02SUS		R1/4	11	58.5	52.5			43	7.5	30							
PX 10-03SUS		R3/8	12	59.5	53												
PX 10-04SUS		R1/2	15	62.5	54.5			73	8	37							
PX 12-02SUS	R1/4	11	63.5	57.5	63.5	8	37										
PX 12-03SUS	R3/8	12	64.5	58				64.5	9	37							
PX 12-04SUS	R1/2	15	67.5	59.5							79.5	11	54.5				
PX 16-03SUS	16	R3/8	12	76.5	70	24.5	24.5	24	22	4.5				22.5	95.5	11	54.5
PX 16-04SUS		R1/2	15	80.5	72.5						99.5	13	59				

unit:mm

PRG SUS304

Different Diam. Double Y



Model	Tube dia. φD1	Tube dia. φD2	B	φP1	φP2	C1	C2	J	φd	F	Mass (g)	Orifice (φmm)	Eff. a. (mm ²)
PRG 6-4SUS	6	4	37.5	13	10.5	17	15	10	3.2	14	14	2.3	1.5
PRG 8-6SUS	8	6	42.5	14.5	13	18	17	13	3.5	16	20.5	4	8.2