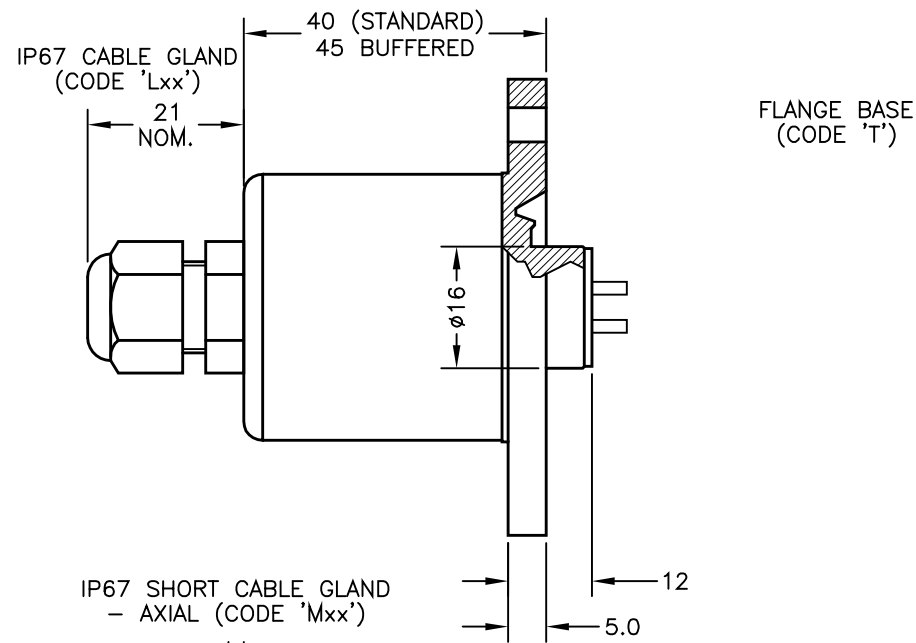
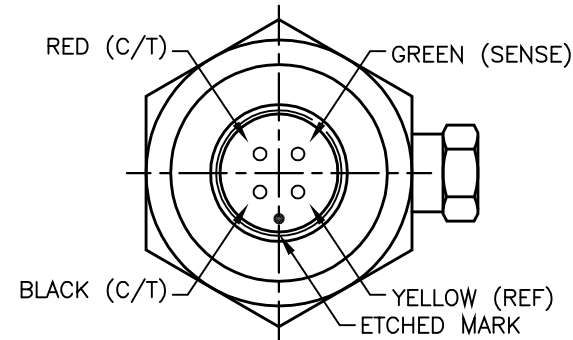
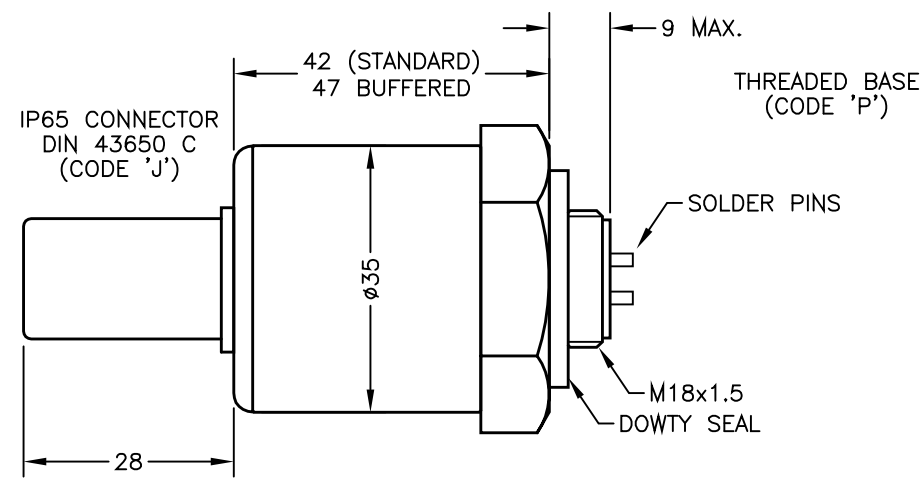
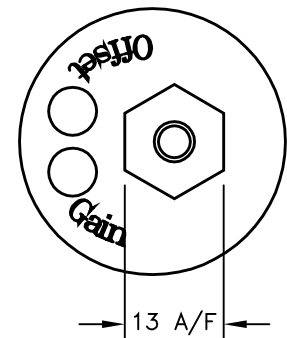
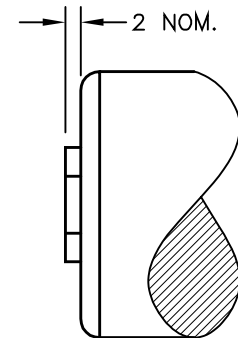
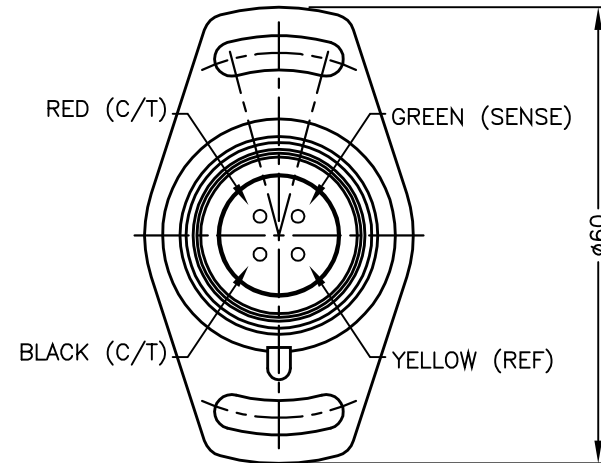


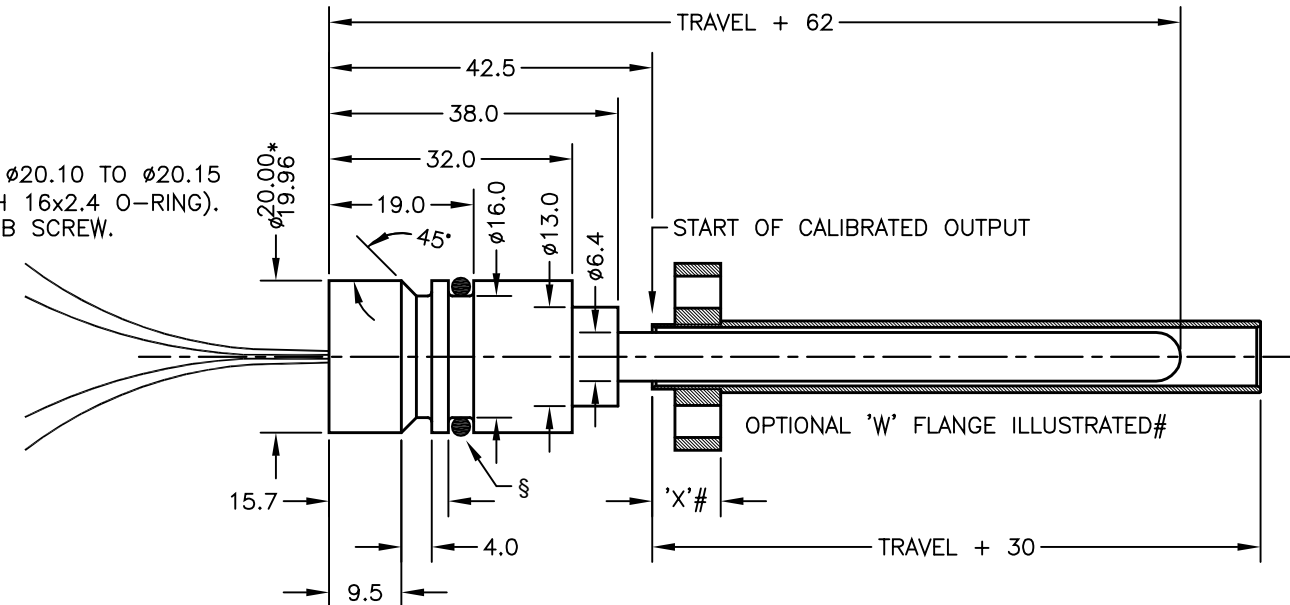
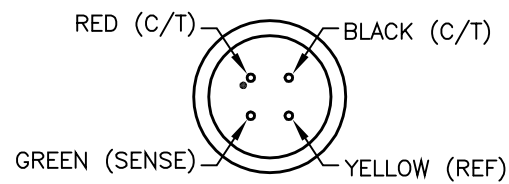
GAIN AND OFFSET ADJUSTMENTS SEALED (CODE 'Y')



SYMMETRICAL WITH 2 OFF 4.4 SLOTS $\pm 15^\circ$ ON 48.0 PCD.



*HOUSING BORE TO SUIT PROBE: $\phi 20.10$ TO $\phi 20.15$ (§ 16.7% TO 11.4% SQUEEZE WITH 16x2.4 O-RING). RETAIN PROBE WITH GRUB SCREW.



ELECTRICAL OPTIONS/ SPECIFICATIONS

OUTPUT OPTION	OUTPUT	SUPPLY	
A	0.5 TO 4.5V RATIO METRIC	5V	STANDARD
B	$\pm 5V$	$\pm 15V$	
C	0.5 TO 9.5V	24V	BUFFERED
D	$\pm 10V$	$\pm 15V$	
E	0.5 TO 4.5V	24V	
F	SUPPLY CURRENT 12mA TYP. 20mA MAX.	24V	
G	4 TO 20mA 2-WIRE	24V	
H	4 TO 20mA 3-WIRE SINK	24V	
	4 TO 20mA 3-WIRE SOURCE	24V	
	SINK VERSION OUTPUT COMPLIANCE 5-28V		
	SOURCE VERSION DRIVE 300 Ω MAX TO 0V		

CABLE LENGTH, OPTIONS 'Lxx' OR 'Mxx', ORDERED IN cm, 50cm STANDARD OR AS REQUIRED.

3-CORE SCREENED: 0.2mm², $\phi 4$ mm PUR JACKET

4-CORE SCREENED: 0.2mm², $\phi 4.6$ mm PUR JACKET

CABLE/CONNECTOR CONNECTIONS*:

3 CORE 4 CORE CONNECTOR

RED	RED	:1	+Ve
BLACK	GREEN	:3	0V
WHITE	YELLOW	:4	-Ve - OPTIONS: B OR D
SCREEN	BLUE	:2	OUTPUT
SCREEN	SCREEN	:4	BODY - OPTIONS: A, C, E-H

*CONNECTORS; MAXIMUM CONDUCTOR CROSS SECTION 0.75mm² RANGE OF DISPLACEMENT FROM 5mm TO 800mm, IN INCREMENTS OF 1mm.

BODY TUBE/PROBE HOUSING MATERIAL: STAINLESS STEEL.

35 A/F BASE MATERIAL: ALUMINIUM ALLOY (CODE 'P')

FLANGE MATERIAL: ALUMINIUM ALLOY (CODE 'T')

FURTHER OPTIONS:

SEE DRAWING TG24-11 FOR #OPTIONAL FLANGE DETAILS AND ORDERING INFORMATION.

TARGET TUBE:

STAINLESS STEEL 316 $\phi 9.45$ OPTION 'R'

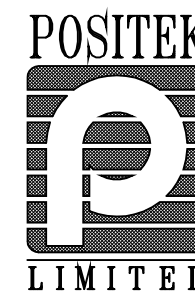
ALUMINIUM 6063 $\phi 3/8$ " (9.2-9.8) OPTION 'S'

SEE P100-12 FOR DETAILS TYPICAL TARGET TUBE MOUNTING ARRANGEMENTS

CONNECTIONS BETWEEN PROBE AND ELECTRONICS MODULE: FOUR WIRES; RED, BLACK, GREEN AND YELLOW, LENGTH: 300, CROSS SECTION: 0.25mm², WIRES POTTED IN PROBE HOUSING. INTERCONNECTIONS MUST BE PROTECTED FROM WATER INGRESS AND STRAIN RELIEVED.

G	ADDITIONAL DIMS/VIEWS ADDED.	PDM
H	RANGE WAS 50-600mm RAN1056	RDS
J	TARGET NOTES AMENDED - RAN1114	PDM

DRAWINGS NOT TO BE CHANGED WITHOUT REFERENCE TO THE CHANGE PROCEDURE. CHANGES TO PARTS USED IN INTRINSICALLY SAFE PRODUCT MUST BE APPROVED BY THE AUTHORISED PERSON THIS IS AN UNCONTROLLED PRINT AND WILL NOT BE UPDATED.



G	05/07/11		CHECKED BY	X	± 0.4
H	9/11/15		RDS	X.X	± 0.2
J	18/10/16			X.XX	± 0.1
					DIMS mm
			DESCRIPTION		
			P106 LIPS INT'NAL MOUNTED CYLINDER SENSOR WITH EXTERNAL ELECTRONICS		
			SCALE	DRAWING NUMBER	REV
			10mm	P106-11	J
					SHEET 1 OF 1