

# Installation Guide for California Instruments GUI Software

## Installation Instructions

1. Open the .exe file to open the Install Shield Setup.
2. Follow the onscreen prompts to complete installation of software.

**\*\*NOTE:** Due to Windows 7 user access privileges selecting a temporary folder to store the Install package may be required.

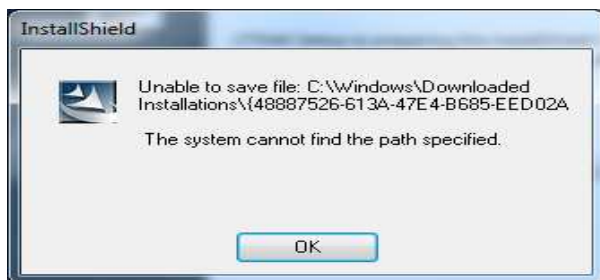
California Instruments Product Support:

On-Line Request:

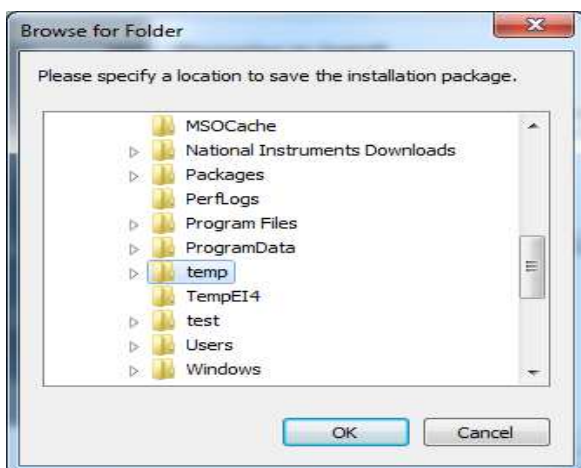
[www.programmablepower.com/support/support\\_CallInst.htm](http://www.programmablepower.com/support/support_CallInst.htm)

Direct: [ci.ppd@ametek.com](mailto:ci.ppd@ametek.com)

Phone: 800-733-5427



3. If the above message appears, click OK. The install shield will prompt to save the installation package at a location. The installation package can be saved into any location that is User accessible. For example: "C:\temp".



4. Click OK. The Install Shield process will continue normally. Follow onscreen prompts to complete installation.