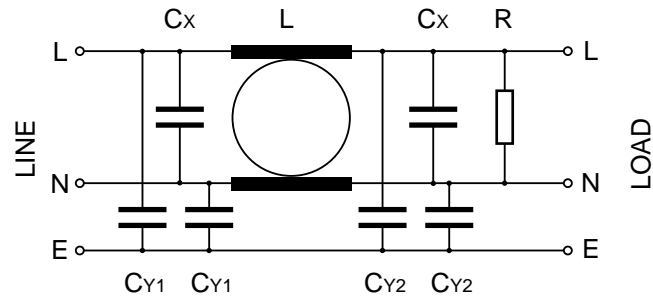


# FSA Series Single Phase RFI Filters 200-250Vac, 48-62Hz

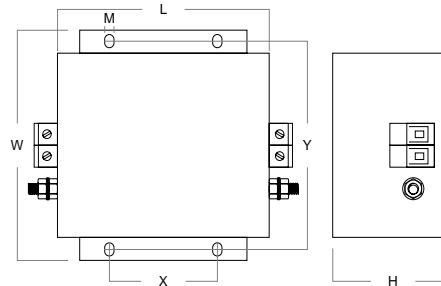
RFI filters for industrial applications up to 55A.  
 All filters are constructed with self-healing X and Y interference suppression capacitors approved to EN132400, CSA & UL. Input and output connections by shrouded terminals.

All units are manufactured to EN133200 specifications and carry the CE mark.

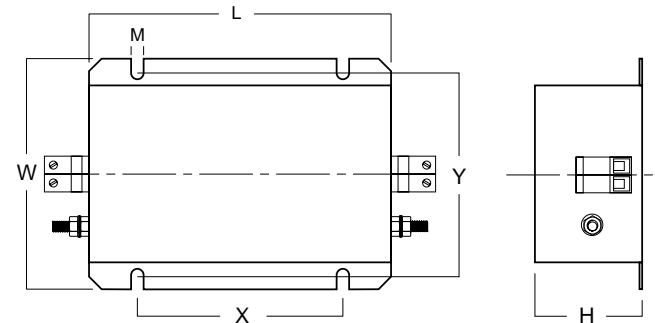
## Circuit Schematic



RF 1008-FSA to RF 1030-FSA



RF 1055-FSA



Filter part no.	Rated Current @ 40°C (A)	Leakage Current @ 250Vac 60Hz (mA)	L (mH)	Component values				Shrouded Terminals (mm <sup>2</sup> )	Case Dimensions (L x W x H (mm))	Mounting (X x Y x M (mm))	Filter Case
				$\Sigma C_x$ ( $\mu F$ )	Cy1 (nF)	Cy2 (nF)	R (M $\Omega$ )				
RF 1008-FSA	8	4.9	10	2.68	10	47	1	0-6	100 x 105 x 57	51 x 95 x M4	FNI-1
RF 1012-FSA	12	4.9	7.5	3.2	10	47	1	0-6	100 x 105 x 57	51 x 95 x M4	FNI-1
RF 1020-FSA	20	4.9	3.2	3.2	10	47	1	0-6	100 x 105 x 57	51 x 95 x M4	FNI-1
RF 1030-FSA	30	5.3	1.3	3.2	15	47	1	0-10	100 x 105 x 57	51 x 95 x M4	FNI-1
RF 1055-FSA	55	11	1	5.4	33	94	1	0-25	180 x 115 x 60	115 x 100 x M6	FNJ-1