

Lite-Fi® Windows CE Driver Installation Guide

**Version 1.3
September 2012**

Redpine Signals, Inc.

2107 N. First Street, #680

San Jose, CA 95131.

Tel: (408) 748-3385

Fax: (408) 705-2019

Email: info@redpinesignals.com

Website: www.redpinesignals.com

Disclaimer:

The information in this document pertains to information related to Redpine Signals Inc. products. This information is provided as a service to our customers, and may be used for information purposes only.

Redpine assumes no liabilities or responsibilities for errors or omissions in this document. This document may be changed at any time at Redpine's sole discretion without any prior notice to anyone. Redpine is not committed to updating these documents in the future.

Copyright 2010 Redpine Signals, Inc. All rights reserved.

Table of Contents

1	About this Installation Guide	5
2	Pre-installation Checkup.....	6
3	Installation of Driver	7
3.1	Copying the Archived File	7
3.1.1	Through Active-Sync.....	7
3.1.2	Through SDIO Memory.....	7
3.2	Installation	7
4	Verification of the Installation	10

Table of Figures

Figure 1: Driver Installation 8
Figure 2: Installation completed 9
Figure 3: Windows folder 10

1 About this Installation Guide

This document describes the installation of the device driver and WLAN configuration utilities on Windows CE platform.

This document is applicable to the following Lite-Fi® family products.

- RS9110-N-11-02
- RS9110-N-11-03

This installation guide covers the following topics:

- Pre-installation Checkup
- Installation of Lite-Fi™ driver
- Verification of the Installation

2 Pre-installation Checkup

You can install the driver on any portable device, which runs Windows CE operating system. Before installing the Redpine's Lite-Fi® device driver onto the Windows CE environment, check for minimum system configuration as mentioned below.

System requirements:

- The mobile device should be based on Windows CE 5.0/6.0/7.0 operating system.
- The mobile device must have SDIO card slot.

Please ensure that older version of the Lite-Fi® driver is removed from the target device. The older driver can be removed by deleting the following files:

- Taim
- Tadm
- instructionSet
- taim_per
- tadm_per
- instructionSet_per
- RWLPSDIO*.dll
- redpine_arm.exe
- redpine_arm_per.exe
- pewcearm_630.exe

3 Installation of Driver

3.1 Copying the Archived File

You may copy the RS.GEN.WCE.SD.x.x.x_Release.CAB (Lite-Fi™ driver setup file) before proceeding to the installation process.

There are two ways you can copy the .CAB file onto the mobile device, where the Lite-Fi™ device driver is to be installed.

3.1.1 Through Active-Sync

You can use Microsoft Active-Sync application to connect the mobile devices (like PDA) to the Windows PC or Laptop.

Step 1: First download and install the Active-Sync application from the following location

<http://www.microsoft.com/windowsmobile/activesync/activesync45.mspx>

Step 2: Connect the mobile device (PDA for example) to the PC or Laptop through the USB cable provided along with the mobile device.

Step 3: Follow the instructions mentioned below to copy Lite-Fi™ driver (.CAB file) from PC or Laptop to the mobile device

- Click 'My Computers' on the PC or laptop
- Click 'Mobile Device' to see list of folders on mobile device. Look for 'My Windows mobile based device' folder. Click it and select 'Temp' folder.
- Copy the RS.GEN.WCE.SD.x.x.x_Release.CAB file provided by Redpine Signals on to the 'Temp' folder in the mobile device.
- If you get any 'File Conversion' warning, ignore it and Press 'OK'

3.1.2 Through SDIO Memory

Alternatively, you can transfer the .CAB file onto mobile device using following steps:

- Copy the RS.GEN.WCE.SD.x.x.x_Release.CAB CAB file provided by Redpine Signals into root folder of the SD memory card
- Insert the SD memory card into the SDIO slot of the mobile device
- Copy the CAB file from the SD memory card into the 'Temp' folder of the mobile device

3.2 Installation

Once the *.CAB file is copied into the mobile device, you can install the driver as follows.

Double click the CAB file found under 'Temp' folder as follows.

- Go to Start menu
- Select 'Programs'
- Select 'File Explorer'
- Select the list box at the top-left corner of the PDA screen
- Select 'My Device'
- Select 'Temp' folder

The system starts the installation process and you can see following screen on the mobile device.

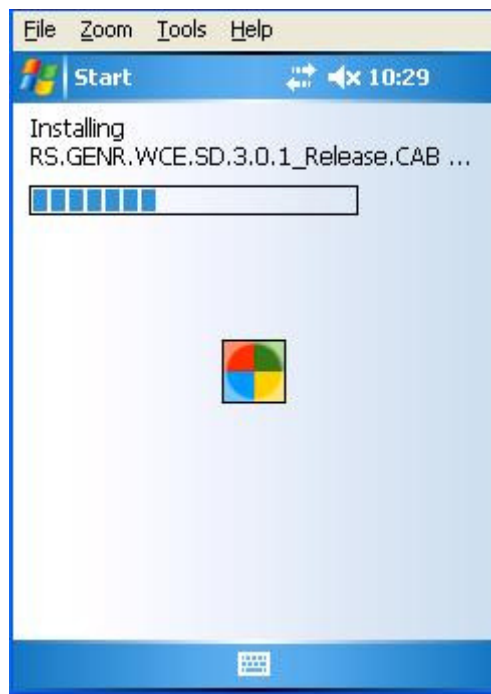


Figure 1: Driver Installation

Upon successful completion of the driver installation, you will be able to see the following screen on the mobile device:



Figure 2: Installation completed

Note: - The above screenshots are based on PDA from Hewlett Packard with WinCE 5.0. These screen shots may vary from device to device, depending on the underlying WinCE version that they are built with.

4 Verification of the Installation

As shown below, you may check for RWLPSDIO.dll in \windows folder of the mobile device to ensure that the driver is installed correctly.

Some WinCE environments hide system DLL files and so you have to perform following steps to confirm the presence of the RWLPSDIO.dll in \windows folder.

- Click 'Start'
- Click 'Programs'
- Click 'File Explorer'
- Select 'My Device'
- Click 'Windows' folder
- Tap and hold on the empty space at the end of the file list
- Enable 'View All Files' option to show the hidden files

If RWLPSDIO.dll is not found, you may repeat the installation process.

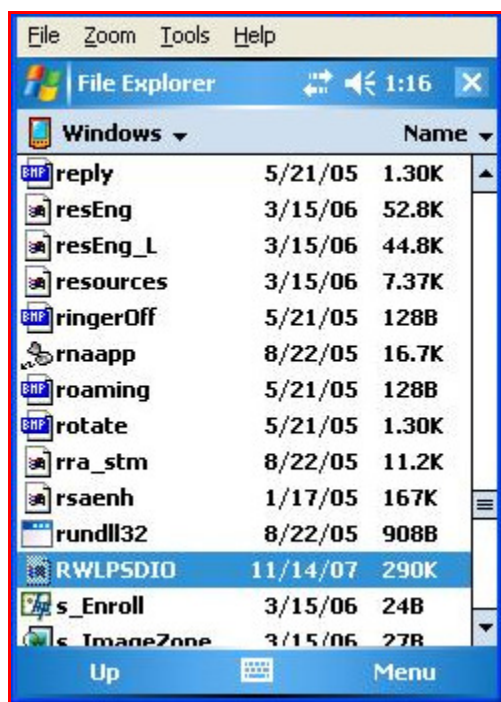


Figure 3: Windows folder

Revision History

Revision No.	Version No.	Date	Author	Changes
1	1.0	Nov '07	Raghavendra, Peddi indukuri	Initial Version
2	1.3	18 Sep, 2012	Srinivas Chappidi	Updated changes with respect to WinCE 7

Review History

Review No.	Version No.	Date	Reviewer	Comments
1	1.0	Jan '09	Venkatesh	
2	1.1	Nov '10	Mohan Vellanki	Please review attached inspection comments.

Version	Page number	Section	Issue Description	Status
1	1	all	update template	done
1	2		copyright update	done
1	5	1	remove Windows Mobile reference	done
1	5	1	refer to only nLink products	done
1	6	2	only WinCE 5.0/6.0 supported	done
1	7	all	RWLPSDIO filename needs to be updated to unified name RS_GNRL_WCE_SD_x_x_x	done
1	7	3.1.1	mention Windows desktop PC	done
1	7	3.1.2	copy the file to root folder of SDIO memory card	done
1	7	3.1.2	On the mobile device copy the file from memory card to device TEMP folder	done
1	7	all	replace SDIO memory card to SD MMC card	done
1	8	3.2	"Scree" to screen	done
1	10	4	missing WZC usage section	done
1	10	4	screen shots for Wince driver are missing	done
1	10	4	un-installation steps should be listed in the document refer to un-instal section before installation	done