

5

4

3

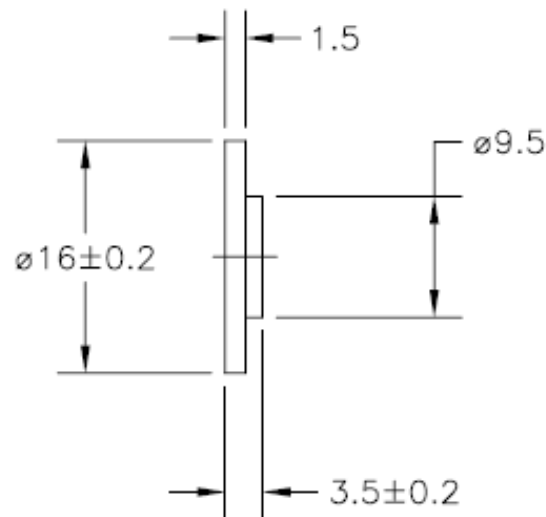
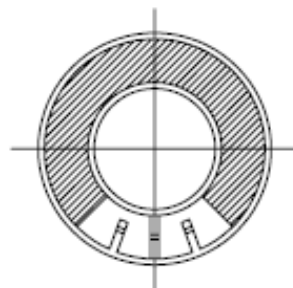
2

1

DWG NO. RH-16-EMNL

RoHS COMPLIANT

REV	ECO NO.	DATE	BY	APP'D
A	REL TO PRODUCTION PER ECO 001	2/16/07	KL	



Tolerance ±0.3mm

UNIT: mm

SPECIFICATION:

Rated Impedance	8 Ohms ±15%
Rated Power	0.3W Max. 0.5W
Resonant Frequency	650Hz ±20%
Effective Freq. Range	310~20K Hz
SPL (at 0.1w, 0.1m)	85±3 dB
Operating Temperature	-20°C~+50°C
Storage Temperature	-25°C~+60°C

CONFIDENTIAL



© Copyright 2007 Regal Electronics, Inc. This drawing is the property of Regal Electronics and contains confidential information, trade secret information and/or know-how which is the property of Regal Electronics. By accepting this drawing, the recipient agrees not to provide, or otherwise make available, the drawing or any information or know-how embodied therein, to any third party without prior written authorization.

DRAWN: KIM	DATE 2/16/07
CHECKED:	DATE
ENGINEER:	DATE
APPROVED:	DATE
APPROVED:	DATE
APPROVED:	DATE

TITLE: HIGH POWER MINIATURE SPEAKER		
SIZE B	DRAWING NO. RH-16-EMNL	REV A
SCALE: NONE	SHEET 1 OF 1	

5

4

3

2

1

C-RH-16-EMNL

A