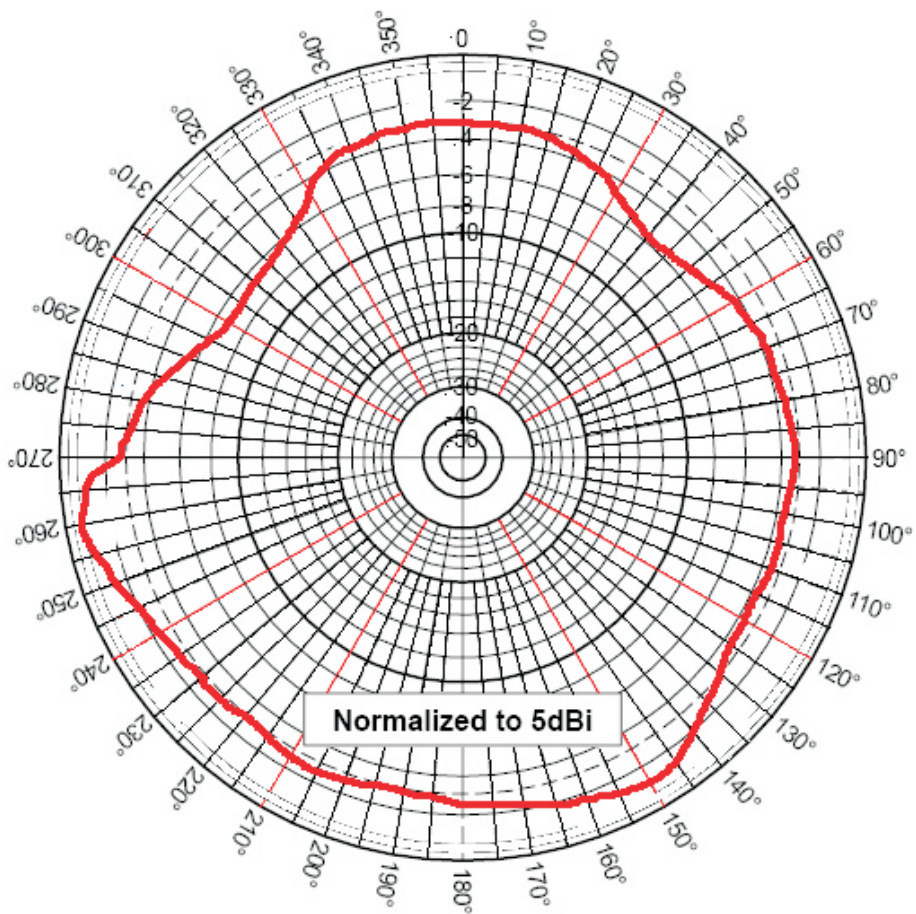




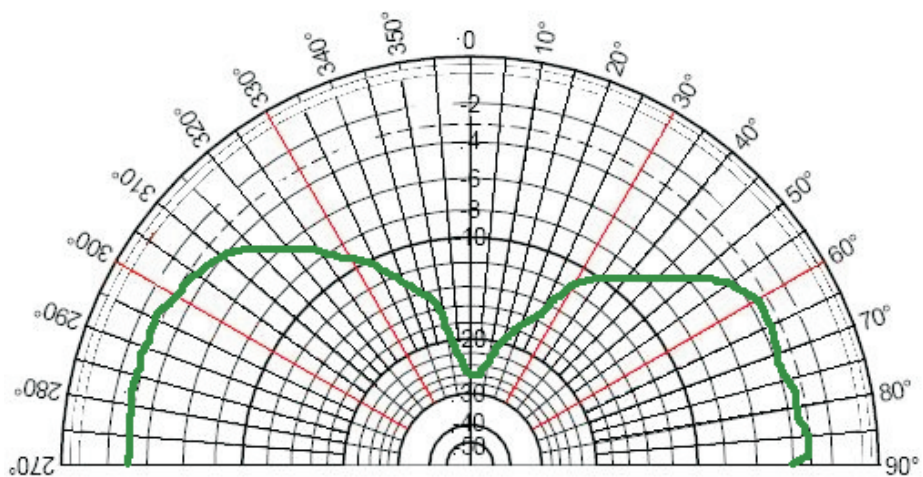
## reference

## 2J600B

mounting position	<b>ANY SURFACE</b>
frequency	<b>AMPS 824-894MHz / GSM900 / GSM1800 DCS1900 / UMTS2100 / GPS 1575.42 MHz</b>
nominal impedance	<b>50 Ohms</b>
polarization	<b>RHCP</b>
gain	<b>26dBi at 3V and 28dBi at 5V</b>
cable	<b>RG174</b>
cable length	<b>upon request</b>
housing size	<b>75 mm x 80 mm</b>
mounting hole	<b>dia. 10.5mm</b>
working temperature	<b>-40°C to +85°C</b>



Azimuthal Pattern (X, Y or E-Plane)



Elevation Pattern (Z, Y or H-Plane)