

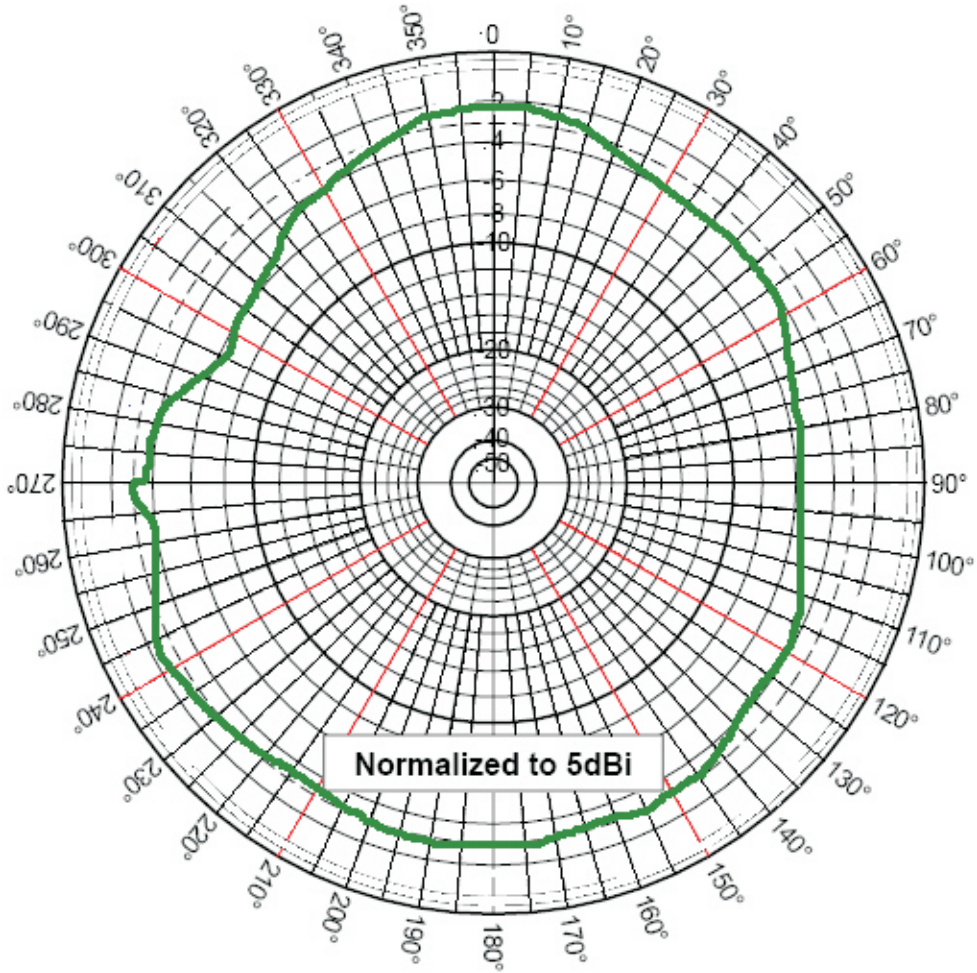


patch antenna | 2J550

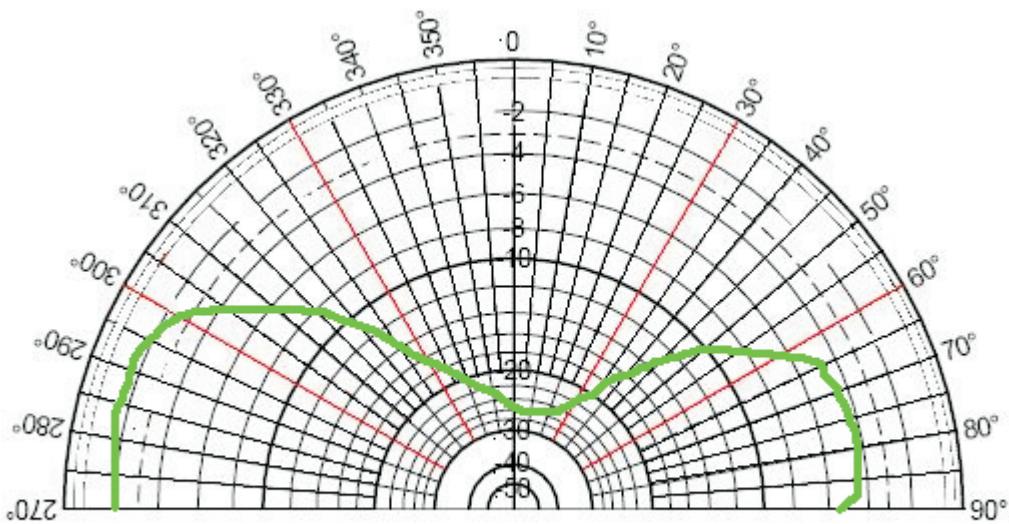
reference

2J550

mounting position	ON GLASS
nominal impedance	50 Ohms
frequency	AMPS 824-894MHz / GSM 900, 1800 MHz PCN 1,9GHz / UMTS 2,1GHz/ Bluetooth 2,4GHz
polarization	VERTICAL
gain	0 dBi
vswr	<1,5/2
power handling	25W
cable	2.5m RG174
connector	FME Female
housing size	25 x 72 mm
working temperature	-40°C to +85°C

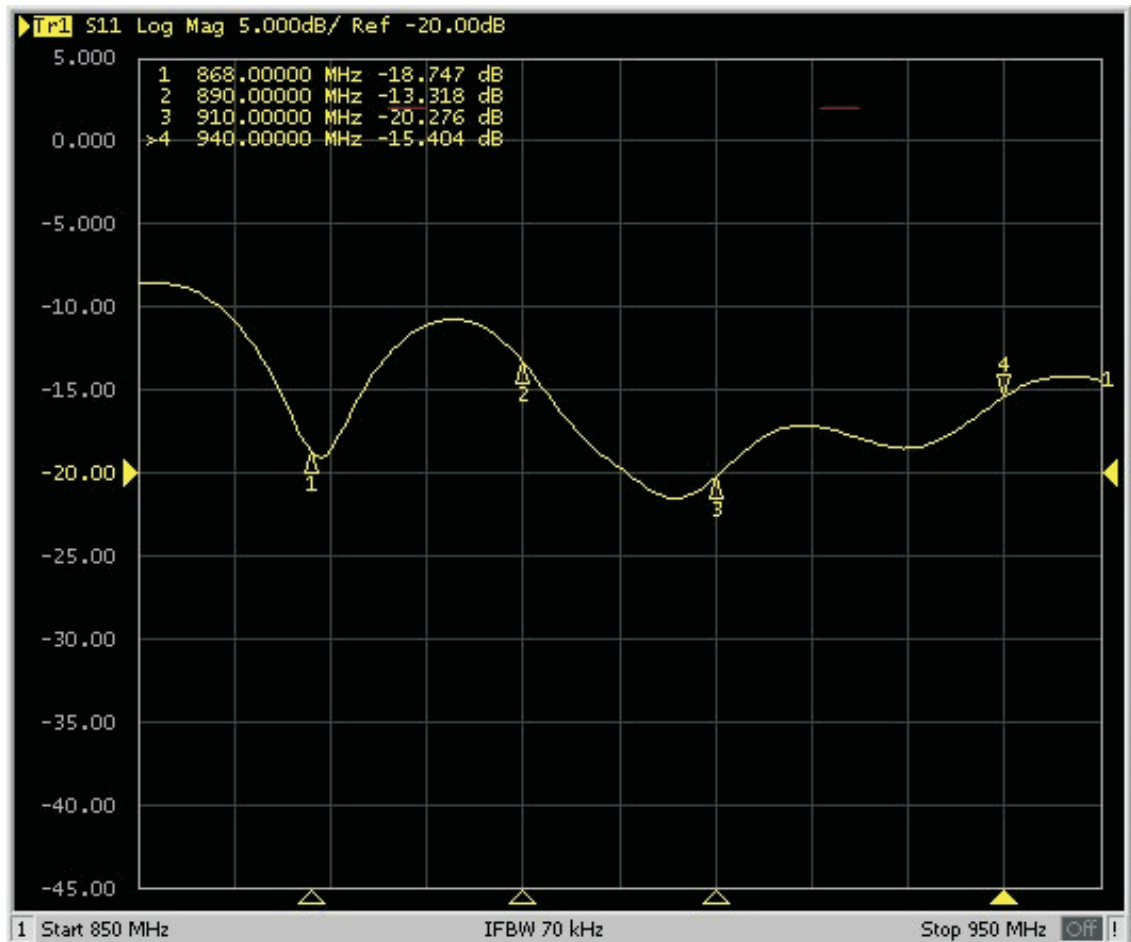


Azimuthal Pattern (X, Y or E-Plane)

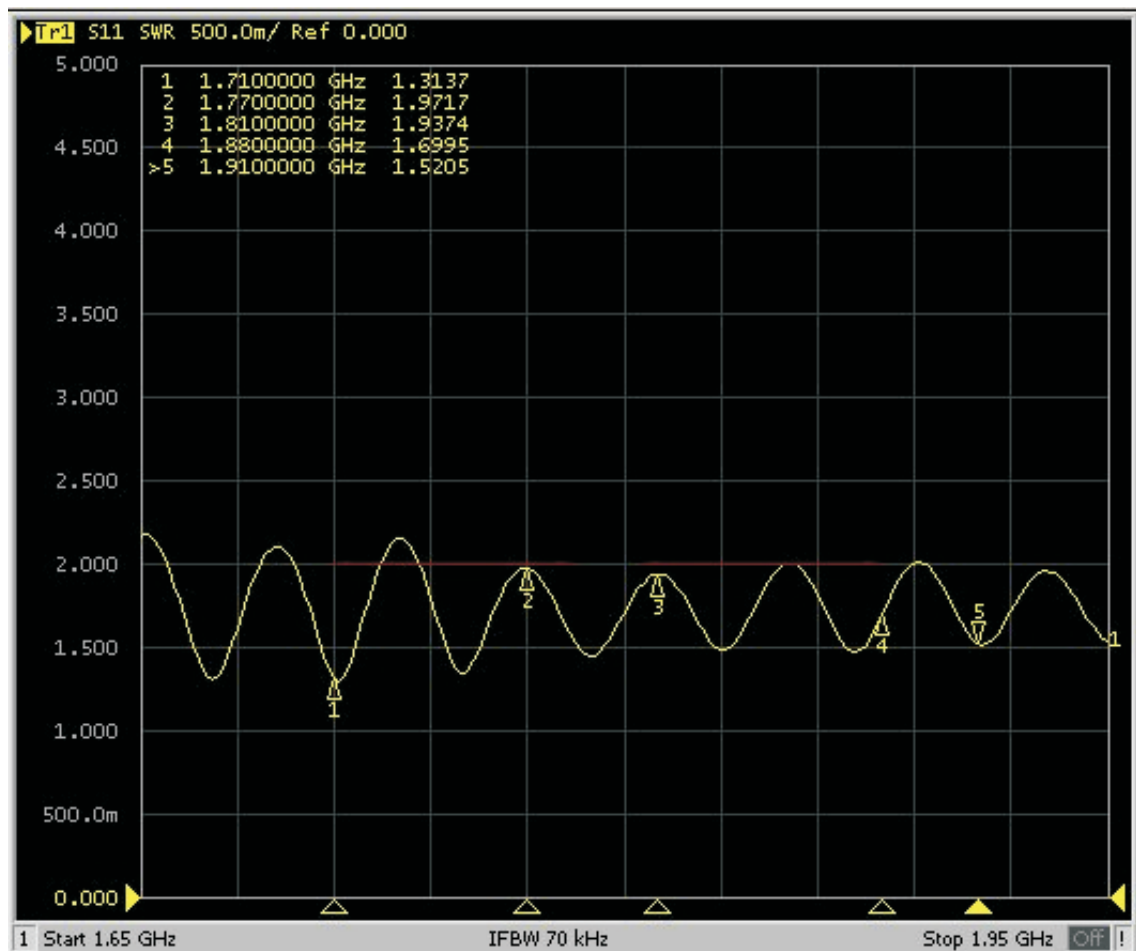


Elevation Pattern (Z, Y or H-Plane)

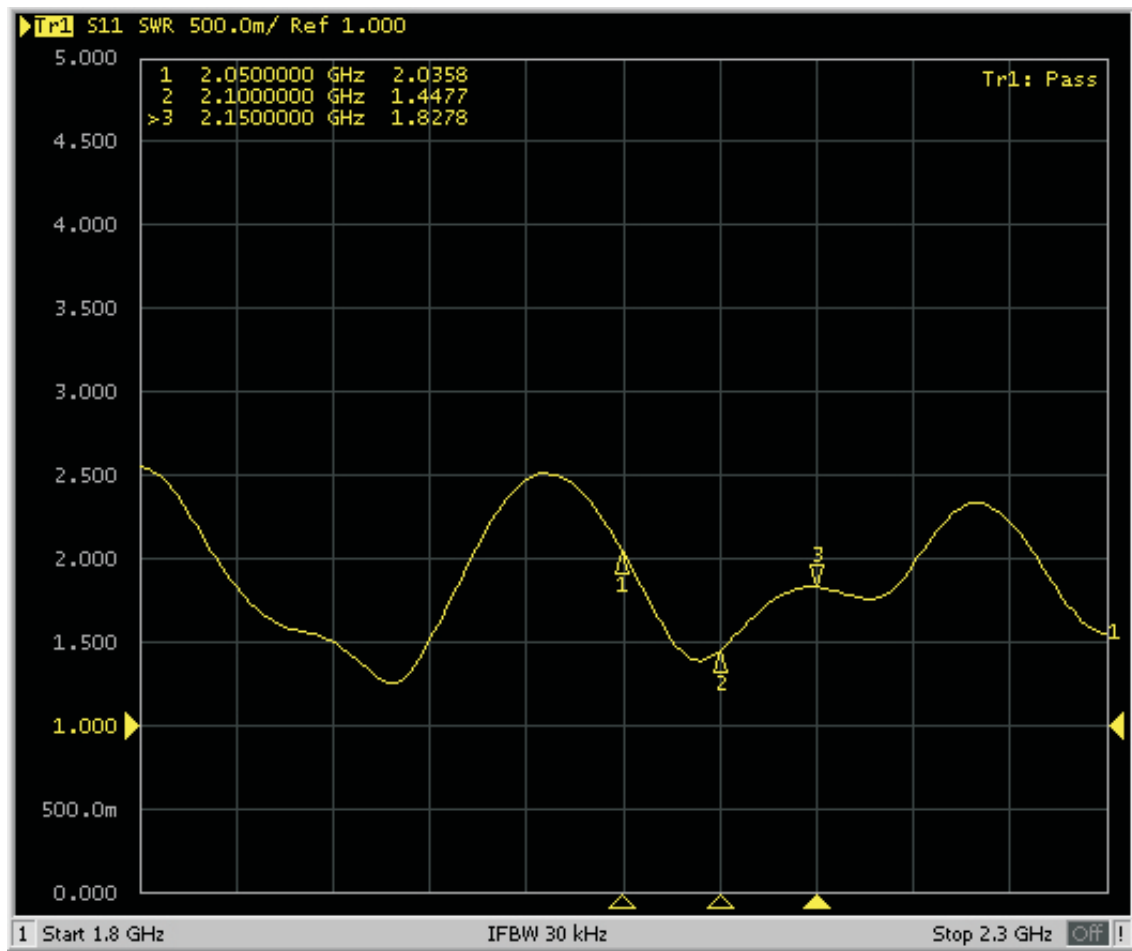
900 MHz



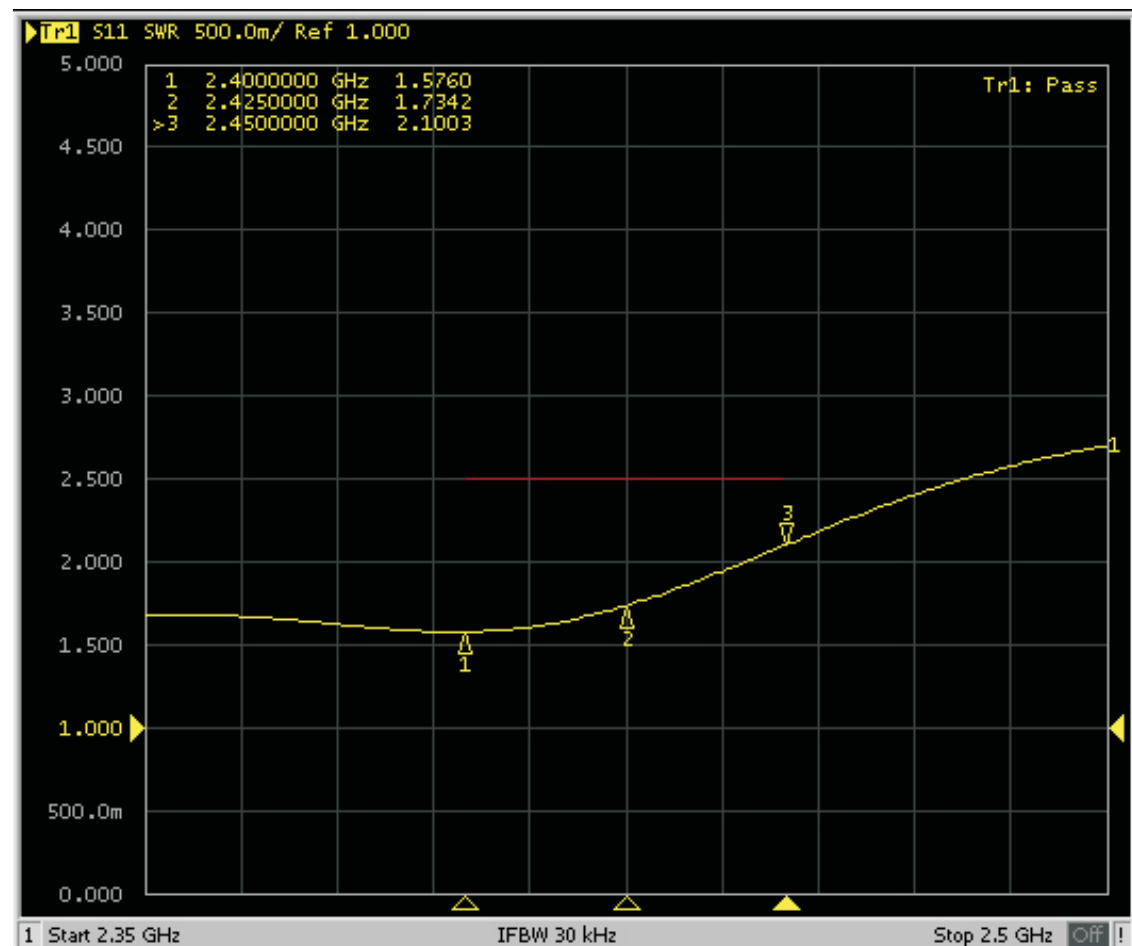
1800/1900 MHz



2100 MHz



2400 MHz



patch antenna | 2J550