



Connector

This document contains TDS for the following products:

Female and male cable coupler

MC4

Follow us



www.renesola.com

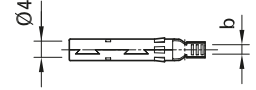
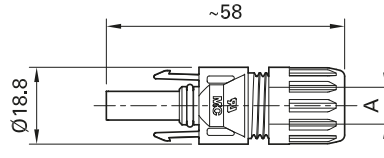
公和母电缆连接器
MC4

Female and male cable coupler
MC4

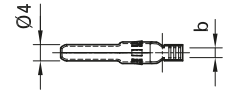
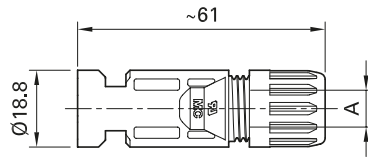
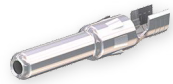
公和母电缆连接器分别为单独零件
(包括绝缘部分)

Female and male cable coupler as individual part
(including insulating part)

PV-KBT4...



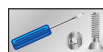
PV-KST4...



型号 Type	订货号 Order No.	母电缆连接器 Female cable coupler	公电缆连接器 Male cable coupler	☒ 电缆固定头范围 Ø range of cable gland	导线截面积 Conductor cross section		b (mm)	认证 Approvals
					mm ²	AWG		
PV-KBT4/2,5I-UR	32.0010P0001-UR	×		A (mm)	1,5; 2,5	14	3	
PV-KST4/2,5I-UR	32.0011P0001-UR		×	3 - 6	1,5; 2,5	14	3	
PV-KBT4/2,5II-UR	32.0012P0001-UR	×		5,5 - 9	1,5; 2,5	14	3	
PV-KST4/2,5II-UR	32.0013P0001-UR		×	5,5 - 9	1,5; 2,5	14	3	
PV-KBT4/6I-UR	32.0014P0001-UR	×		3 - 6	4; 6	12; 10	5	
PV-KST4/6I-UR	32.0015P0001-UR		×	3 - 6	4; 6	12; 10	5	
PV-KBT4/6II-UR	32.0016P0001-UR	×		5,5 - 9	4; 6	12; 10	5	
PV-KST4/6II-UR	32.0017P0001-UR		×	5,5 - 9	4; 6	12; 10	5	
PV-KBT4/8II-UR	32.0080P0001-UR	×		6,5 - 8,9	-	8	-	
PV-KST4/8II-UR	32.0081P0001-UR		×	6,5 - 8,9	-	8	-	
PV-KBT4/10II	32.0034P0001	×		5,5 - 9	10	-	7,2	
PV-KST4/10II	32.0035P0001		×	5,5 - 9	10	-	7,2	



安全锁紧夹, 见第55 页
密封盖, 见第57 页
装配工具, 见第63 页



Safety lock clip page 55
Sealing caps page 57
Assembly tools page 63



MA 装配说明 MA231



MA Assembly Instructions MA231

Advanced Contact Technology

- 嵌入式锁紧
 - 根据NEC2011 标准制造的PV-SSH4 安全锁紧夹只能用工具才能松开
 - 久经考验的MULTILAM 技术具有长期的高的稳定性，这保证了连接器在整个使用寿命中可以保持持续的较低的功率损失
 - 经过了12年来在实际光伏电站运行使用中的检验
 - 可提供截面积为10 mm² 的连接器
 - 也可提供成品电缆，见第68页
 - 根据客户所需规格而制造的电缆，参阅第70页
- Snap-in lock
 - Locking by safety lock clip PV-SSH4 in accordance with NEC 2011, can be released only with tool
 - Proven MULTILAM technology with high long-term stability, which ensures consistently low performance loss throughout the entire service life of the plug connector
 - Tried and tested plug connectors, 12 years of experience in the field
 - Available for assembly with cross-sections of 10 mm²
 - Also available as ready made leads, see page 68
 - Leads made to customer's specifications, see page 70

技术参数	Technical data	
连接器系统	Connector system	Ø 4 mm
额定电压	Rated voltage	1000 V DC /1500 V DC (IEC)¹⁾ 1000 V DC /600 V DC (UL)²⁾
额定电流 IEC (90 ° C)	Rated current IEC (90 °C)	17 A (1,5 mm²) 22,5 A (2,5 mm²; 14 AWG) 30 A (4 mm², 6 mm²; 12 A WG, 10 AWG) 43 A (10 mm²) 50 A (8 AWG)
额定电流 IEC (85 ° C)	Rated current IEC (85 °C)	17 A (1,5 mm²) 22,5 A (2,5 mm²; 14 AWG) 39 A (4 mm²; 12 AWG) 45 A (6 mm²; 10 AWG)
额定脉冲电压	Rated impulse voltage	12 kV (1000 V DC (IEC)) 16 kV (1500 V DC (IEC))
环境温度范围	Ambient temperature range	-40 °C...+90 °C (IEC) -40 °C...+75 °C (UL) -40 °C...+70 °C (UL: 14 AWG)
温度上限	Upper limiting temperature	105 °C (IEC)
防护等级, 已插合 未插合	Degree of protection, mated unmated	IP65, IP68 (1 h /1 m) IP2X
过压类别 /污染等级	Overvoltage category/Pollution degree	CATIII /3
连接器的接触电阻	Contact resistance of plug connectors	≤ 0,35 mΩ
安全等级	Safety class	1000 V DC: II 1500 V DC: 0
连接系统	Contact system	MULTILAM
接线方式	Type of termination	压接 /Crimping
触点材质	Contact material	铜、镀锡 /Copper, tin plated
绝缘材料	Insulation material	PC /PA
锁紧系统	Locking system (UL)	嵌入式 /Locking type
阻燃等级	Flame class	UL94-V0
耐氨性 (参考DLG)	Ammonia resistance (acc. to DLG)	1500 h, 70 °C /70 % RH, 750 ppm
盐雾试验, 严酷等级6	Salt mist spray test, degree of severity 6	IEC 60068-2-52
TÜV 认证, 符合EN 50521 标准	TÜV-Rheinland certified, in accordance with EN 50521	R60028286
TÜV 认证, 符合2Pfg2330 标准	TÜV-Rheinland certified, in accordance with 2Pfg2330	R60087448
UL 认证部件, 符合UL 6703 标准	UL recognized component, in accordance with UL 6703	E343181
CSA 认证, 符合UL 6703 标准	CSA certified, in accordance with UL 6703	250725

¹⁾ 2P fg2330: 仅用于限制进入的光伏电站系统

²⁾ 适用于特定配置; 详情参见装配说明MA231

¹⁾ 2Pfg2330: only approved for locations with restricted access

²⁾ for selected configurations; see assembly instructions MA231 for details

Contacts:



Global Headquarters & Asia
Add: 15F, Manpo int'l Plaza,
No. 500, West Yan'an Road,
Shanghai, China 200050
T: +86 21 62809180
F: +86 21 62805600
E: services@renesola.com

Australia
Add: 51 Barry Street, Bayswater
Victoria 3153, Melbourne
T: +61 1300 700 788
E: marketingaus@renesola.com

Europe
Add: Lyoner Straße 15
60528 Frankfurt am Main, Germany
T: +49 (0) 69 663 78 69 00
E: services@renesola.com

Africa
Add: Unit 2, Rambo Junction,
400 Roan Crescent, Midrand,
1685, South Africa
T: (+27) 010 006 0200
E: supportza@renesola.com

Americas
Add: 1300 Clay Street, Suite 550,
Oakland, CA 94612
T: +(415) 852 7421
E: marketing.us@renesola.com