

## Virtus<sup>®</sup> III Module

275W/280W/285W



**High Module Conversion Efficiencies**



**Easy Installation and Handling for Various Applications**



**Mechanical Load Capability of up to 5400 Pa**



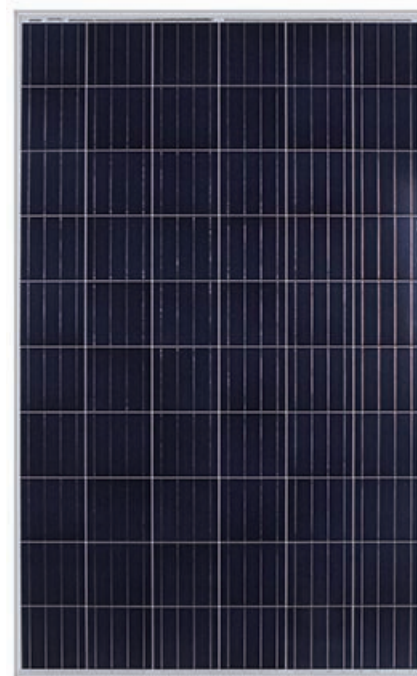
**Conforms with IEC 61215:2005,  
IEC 61730:2004 PV Standards**



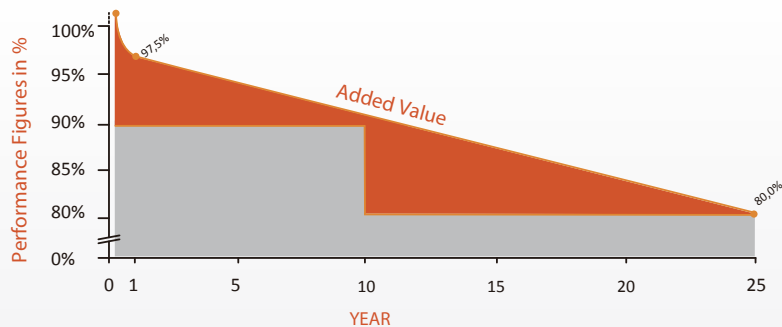
**ISO9001, OHSAS18001, ISO14001 Certified**



**Application Class A, Safety Class II, Fire Rating C**



Also Applicable for Module with Black Frame

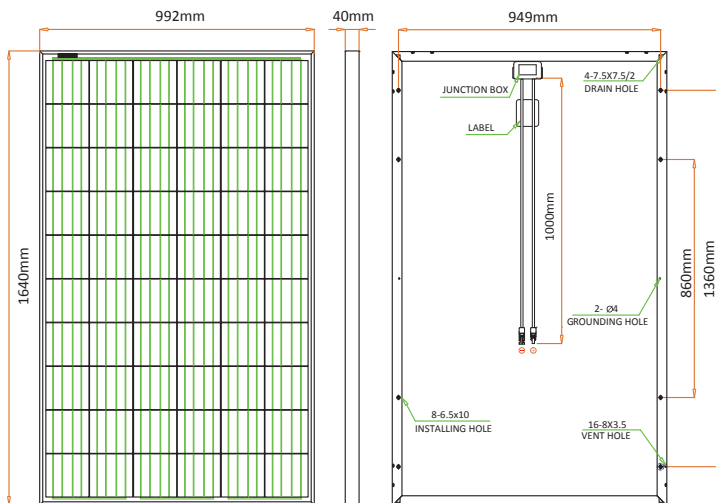


**10-year**  
material & workmanship

**25-year**  
linear power output

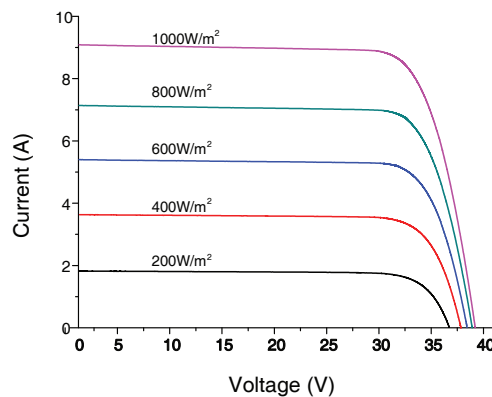


#### Dimensions



Drawing Only for Reference

#### I-V Curves



#### Electrical Characteristics STC

Maximum Power (Pmax)  
Power Tolerance  
Module Efficiency  
Maximum Power Current (Imp)  
Maximum Power Voltage (Vmp)  
Short Circuit Current (Isc)  
Open Circuit Voltage (Voc)

#### JC275M-24/Bbs

275 W  
0 ~ +5W  
16.9%  
8.79 A  
31.3 V  
9.35 A  
38.7 V

#### JC280M-24/Bbs

280 W  
0 ~ +5W  
17.2%  
8.86 A  
31.6 V  
9.42 A  
38.9 V

#### JC285M-24/Bbs

285 W  
0 ~ +5W  
17.5%  
8.96 A  
31.8 V  
9.54 A  
39.0 V

Values at Standard Test Conditions STC (AM1.5, Irradiance of 1000W/m<sup>2</sup>, Cell Temperature 25°C)

#### Electrical Characteristics NOCT

Maximum Power (Pmax)  
Maximum Power Current (Imp)  
Maximum Power Voltage (Vmp)  
Short Circuit Current (Isc)  
Open Circuit Voltage (Voc)

#### JC275M-24/Bbs

204 W  
7.08 A  
28.8 V  
7.54 A  
35.8 V

#### JC280M-24/Bbs

207 W  
7.14 A  
29.0 V  
7.60 A  
36.0 V

#### JC285M-24/Bbs

211 W  
7.22 A  
29.2 V  
7.66 A  
36.2 V

Values at Normal Operating Cell Temperature, Irradiance of 800W/m<sup>2</sup>, AM1.5, Ambient Temperature 20°C, Wind Speed 1m/s.

#### Mechanical Characteristics

Cell Type: Virtus III (Polycrystalline) 156 x156 mm, 60 (6x10) pcs in series  
Glass: High Transmission, Low Iron, Tempered Glass  
Frame: Anodized Aluminum Alloy  
Junction Box: IP65/IP67 Rated, With Bypass Diodes  
Dimension: \*1640 x 992 x 40 mm  
Output Cable: 4 mm<sup>2</sup> (EU)/12 AWG (US), 1000 mm  
Weight: 19 kg  
Installation Hole Location: See Drawing Above

#### Characteristics

Temperature Coefficient of Voc: -0.30%/°C  
Temperature Coefficient of Isc: 0.04%/°C  
Temperature Coefficient of Pmax: -0.40%/°C  
Nominal Operating Cell Temperature (NOCT): 45°C±2°C

#### Packing Information

Container	20' GP	40' GP	40' HQ
Pallets per Container	12	28	28
Pieces per Container	300/312	700/728	770/798

Rev No: JC/TDS/2015.01.20 \*Contact ReneSola for tolerance specification  
CAUTION: All rights reserved. Design and specification are subject to change without prior notice.

#### Maximum Ratings

Operating Temperature	-40°C ~ +85°C
Maximum System Voltage	1000VDC (EU) / 1000VDC (US)
Maximum Series Fuse Rating	20A (EU) / 20A (US)