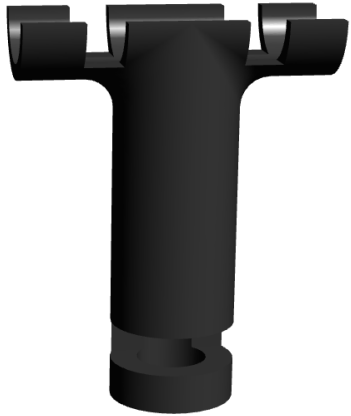


SUPPORT TEE

FOR PREFORMED LOOPS



3/8" Rebar



- Small lightweight design
- Quick and easy installation
- Designed to support loop when pouring concrete
- Used with 3/8" rebar
- Ensures loops are a minimum of 2" above the rebar
- Can be secured with simple cable ties

Note: The rebar should be cut long enough to be driven firmly into the ground to securely hold the tee at the correct height above the concrete reinforcing steel. The spacing of the tee/rebar supports should be no more than 2 feet apart to properly support the cable.



Reno A&E
4655 Aircenter Circle • Reno, Nevada • 89502 • USA
Tel: (775) 826-2020 • Fax: (775) 826-9191 •
E-mail: sales@renoae.com • Website: www.renoae.com



Support Tee

General Characteristics:

Material: VALOX 553, 30% Glass-filled PBT by GE or equivalent.

Color: Black

Installation Instructions: Hammer 3/8" rebar into ground leaving at least 2" of rebar exposed. Place every 1' to 2' around the perimeter of the loop. Position the loop on the tee and use a wire/cable tie to secure it into place (see picture below).



Dimensions:

