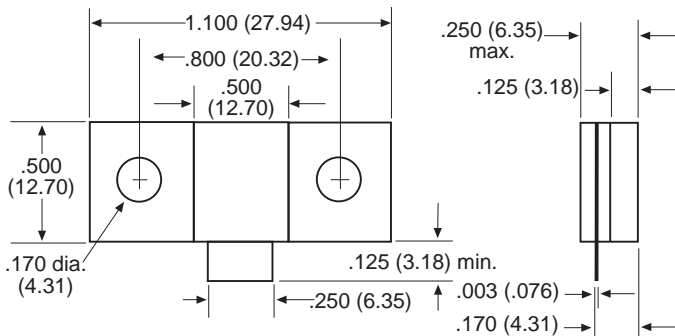


PERFORMANCE SPECIFICATIONS:

Part Number: RPT975-250
 Frequency: DC-1.0GHz
 VSWR (Max): 1.25:1 DC to 1.0 GHz

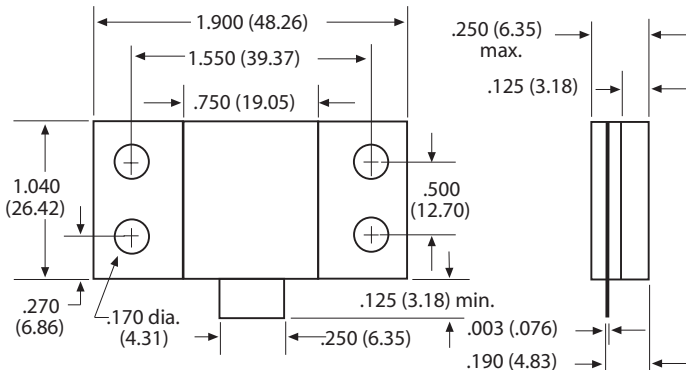
250 Watts (4KW Peak)



PERFORMANCE SPECIFICATIONS:

Part Number: RPT1100-400
 Frequency: DC-1.0GHz
 VSWR (Max): 1.25:1 DC to 500 MHz
 1.35:1 500 to 1 GHz

400 Watts (5KW Peak)



PERFORMANCE SPECIFICATIONS:

Part Number: RPT1900-800
 Frequency: DC-500MHz
 VSWR (Max): 1.25:1 DC to 200 MHz
 1.50:1 200 to 500 MHz

800 Watts (10KW Peak)