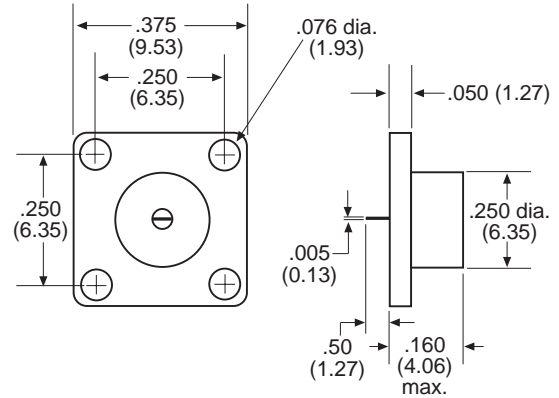


PERFORMANCE SPECIFICATIONS:

PART NUMBER	FREQUENCY RANGE	VSWR (max.)
RFT375-3	DC to 4 GHz	1.15:1
	4 to 8 GHz	1.20:1
	8 to 18 GHz	1.35:1

1 WATTS



PERFORMANCE SPECIFICATIONS:

PART NUMBER	FREQUENCY RANGE	VSWR (max.)
RFT375-4	DC to 4 GHz	1.10:1
RFT375-5	DC to 8 GHz	1.20:1
RFT375-6	DC to 18 GHz	1.35:1

3 WATTS

