

GENERAL SPECIFICATIONS

FEATURES:

Designed for high frequency applications.

Space saver - compact sizes.

Time saver - easy to use.

IMPEDANCE: 50 Ohms.

MECHANICAL TOLERANCE: ±.010 inch unless otherwise specified.

TEMPERATURE COEFFICIENT: ±100 PPM/°C.

TEMPERATURE CYCLING: Less than 0.25% change.

SHOCK & VIBRATION: Less than .10% change.

MOISTURE RESISTANCE: Less than 1% change when tested per method 106 of MIL-STD-202.

LIFE TEST: Less than 1% change when tested for 1000 hours full load at 100°C.

FREQUENCY RANGE	VSWR (max.)
DC - 4 GHz	1.10:1
4 - 8 GHz	1.20:1
8 - 18 GHz	1.35:1

POWER RATING: Rated power is based on a maximum flange temperature of 100°C derated to 0 power at 150°C.

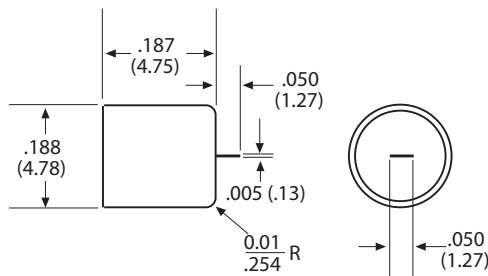
MATERIALS:

RESISTIVE ELEMENT: Proprietary film.

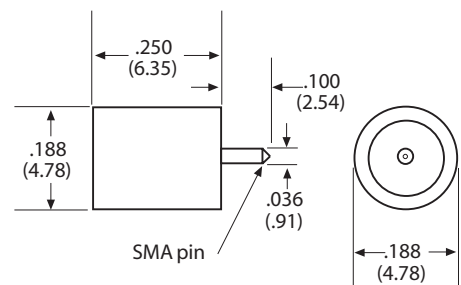
HOUSING: Copper, Nickel Plated.

SUBSTRATE: 3 Watt Alumina, 15 Watt Beryllium Oxide.

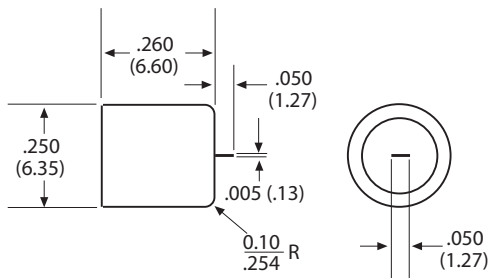
CONTACT: Beryllium Copper 1/2 hard Gold Plated.



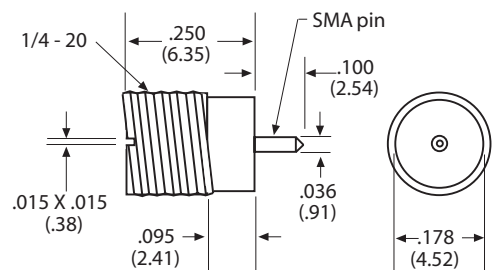
RCL3-1 3 WATTS



RCL3-3 3 WATTS



RCL15-1 15 WATTS



RCL3-4 3 WATTS