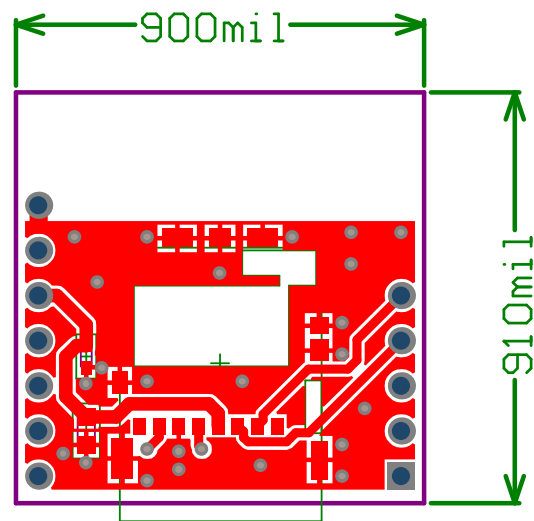


NO VENDOR MARKINGS, VENDOR IS NOT TO ADD OR REMOVE ANYTHING
R414 Copyright www.RFduino.com 12/12/2013



LAYERS

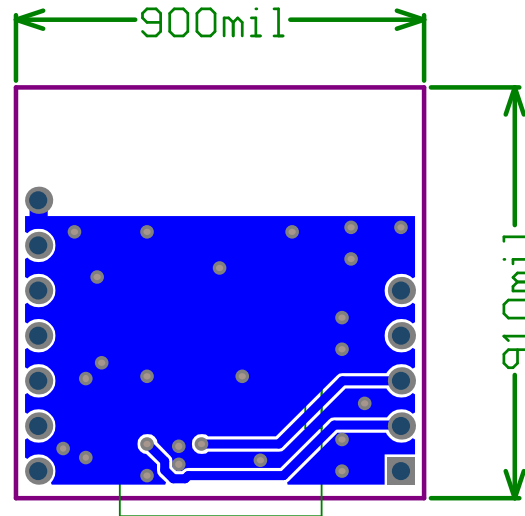
TOP COPPER

DIMENSIONS

ROUTING KEEPOUT LAYER

NO VENDOR MARKINGS, VENDOR IS NOT TO ADD OR REMOVE ANYTHING
R414 Copyright www.RFduino.com 12/12/2013

NO VENDOR MARKINGS, VENDOR IS NOT TO ADD OR REMOVE ANYTHING
R414 Copyright www.RFduino.com 12/12/2013



LAYERS

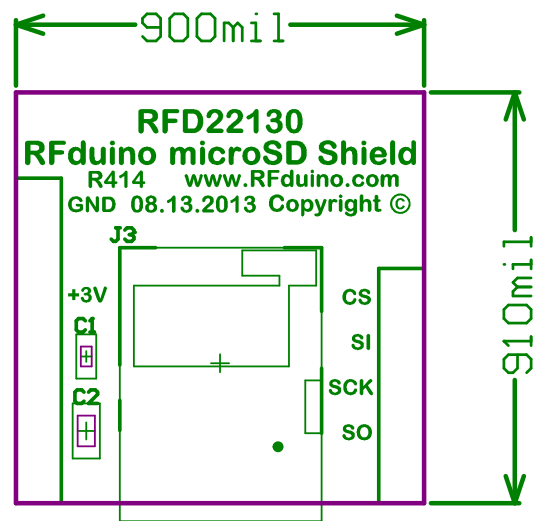
 BOTTOM COPPER

 DIMENSIONS

 ROUTING KEEPOUT LAYER

NO VENDOR MARKINGS, VENDOR IS NOT TO ADD OR REMOVE ANYTHING
R414 Copyright www.RFduino.com 12/12/2013

NO VENDOR MARKINGS, VENDOR IS NOT TO ADD OR REMOVE ANYTHING
R414 Copyright www.RFduino.com 12/12/2013



LAYERS

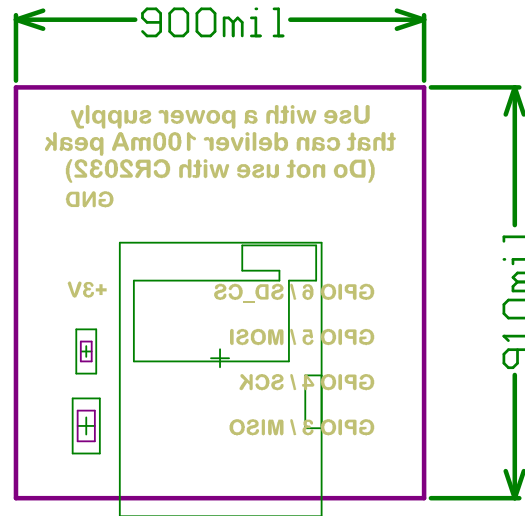
TOP OVERLAY

DIMENSIONS

ROUTING KEEPOUT LAYER

NO VENDOR MARKINGS, VENDOR IS NOT TO ADD OR REMOVE ANYTHING
R414 Copyright www.RFduino.com 12/12/2013

NO VENDOR MARKINGS, VENDOR IS NOT TO ADD OR REMOVE ANYTHING
R414 Copyright www.RFduino.com 12/12/2013



LAYERS

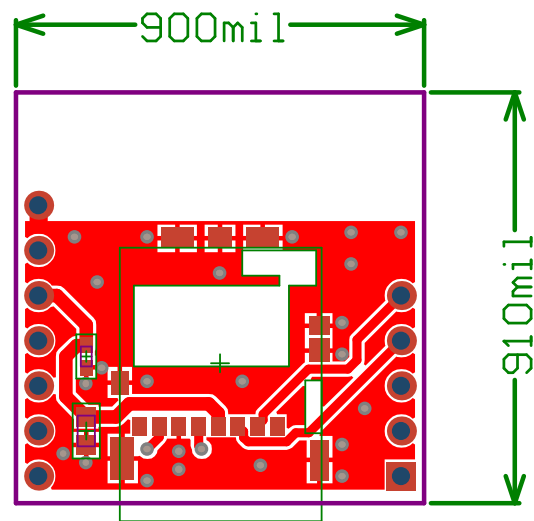
BOTTOM OVERLAY

DIMENSIONS

ROUTING KEEPOUT LAYER

NO VENDOR MARKINGS, VENDOR IS NOT TO ADD OR REMOVE ANYTHING
R414 Copyright www.RFduino.com 12/12/2013

NO VENDOR MARKINGS, VENDOR IS NOT TO ADD OR REMOVE ANYTHING
R414 Copyright www.RFduino.com 12/12/2013



LAYERS

TOP SOLDER MASK

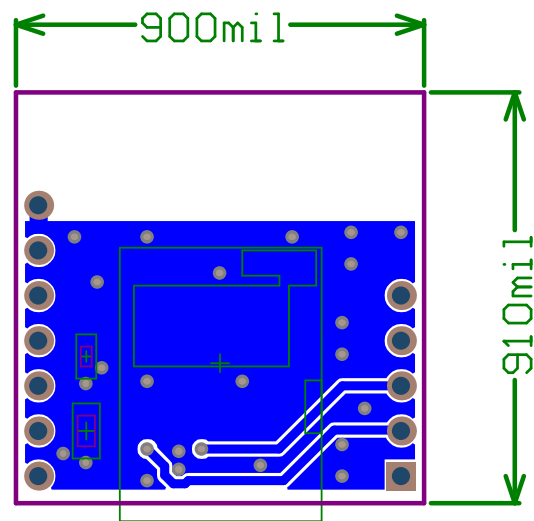
TOP COPPER

DIMENSIONS

ROUTING KEEPOUT LAYER

NO VENDOR MARKINGS, VENDOR IS NOT TO ADD OR REMOVE ANYTHING
R414 Copyright www.RFduino.com 12/12/2013

NO VENDOR MARKINGS, VENDOR IS NOT TO ADD OR REMOVE ANYTHING
R414 Copyright www.RFduino.com 12/12/2013

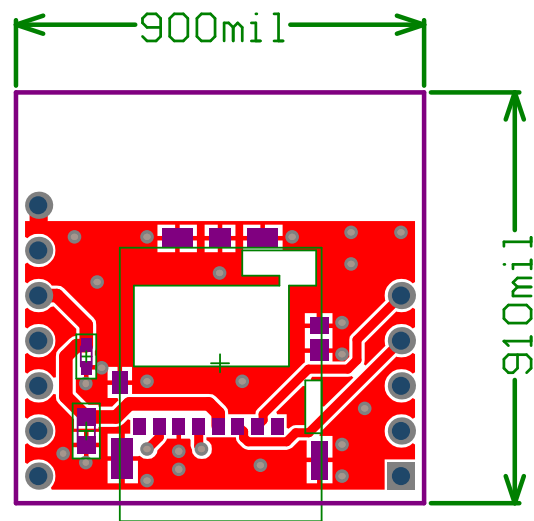


LAYERS



NO VENDOR MARKINGS, VENDOR IS NOT TO ADD OR REMOVE ANYTHING
R414 Copyright www.RFduino.com 12/12/2013

NO VENDOR MARKINGS, VENDOR IS NOT TO ADD OR REMOVE ANYTHING
R414 Copyright www.RFduino.com 12/12/2013



LAYERS

TOP PASTE

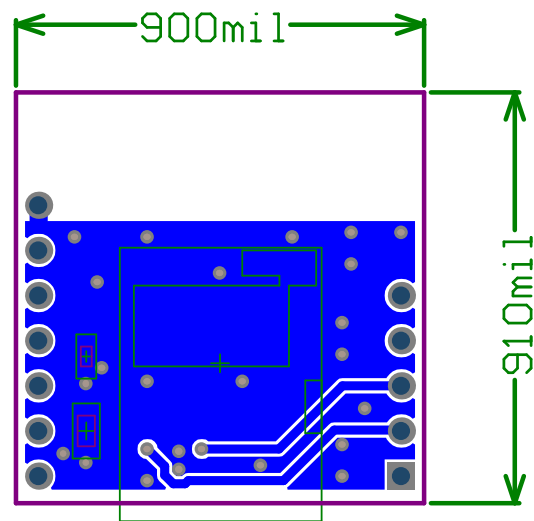
TOP COPPER

DIMENSIONS

ROUTING KEEPOUT LAYER

NO VENDOR MARKINGS, VENDOR IS NOT TO ADD OR REMOVE ANYTHING
R414 Copyright www.RFduino.com 12/12/2013

NO VENDOR MARKINGS, VENDOR IS NOT TO ADD OR REMOVE ANYTHING
R414 Copyright www.RFduino.com 12/12/2013



LAYERS

 BOTTOM COPPER

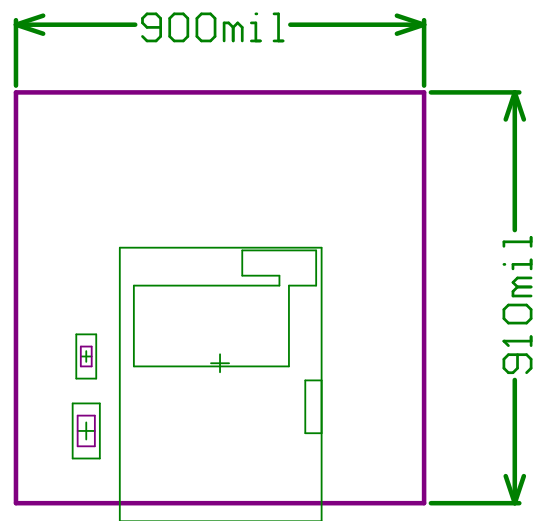
 BOTTOM PASTE

 DIMENSIONS

 ROUTING KEEPOUT LAYER

NO VENDOR MARKINGS, VENDOR IS NOT TO ADD OR REMOVE ANYTHING
R414 Copyright www.RFduino.com 12/12/2013

NO VENDOR MARKINGS, VENDOR IS NOT TO ADD OR REMOVE ANYTHING
R414 Copyright www.RFduino.com 12/12/2013

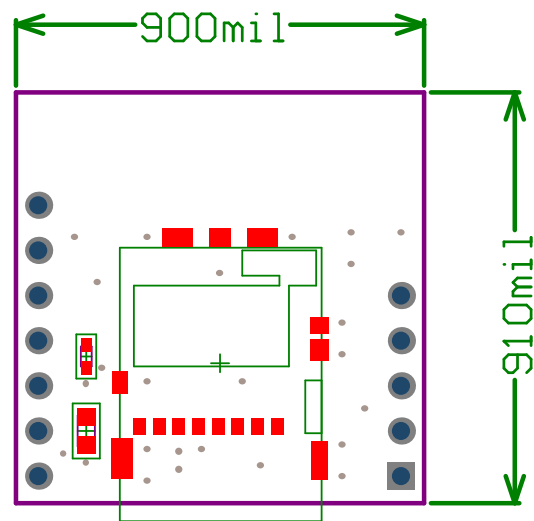


LAYERS



NO VENDOR MARKINGS, VENDOR IS NOT TO ADD OR REMOVE ANYTHING
R414 Copyright www.RFduino.com 12/12/2013

NO VENDOR MARKINGS, VENDOR IS NOT TO ADD OR REMOVE ANYTHING
R414 Copyright www.RFduino.com 12/12/2013

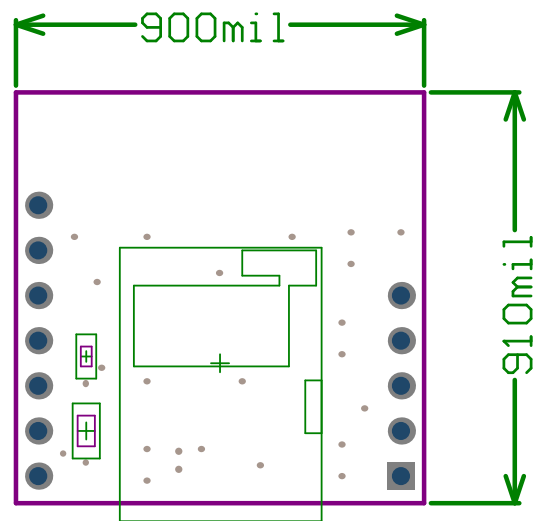


LAYERS



NO VENDOR MARKINGS, VENDOR IS NOT TO ADD OR REMOVE ANYTHING
R414 Copyright www.RFduino.com 12/12/2013

NO VENDOR MARKINGS, VENDOR IS NOT TO ADD OR REMOVE ANYTHING
R414 Copyright www.RFduino.com 12/12/2013

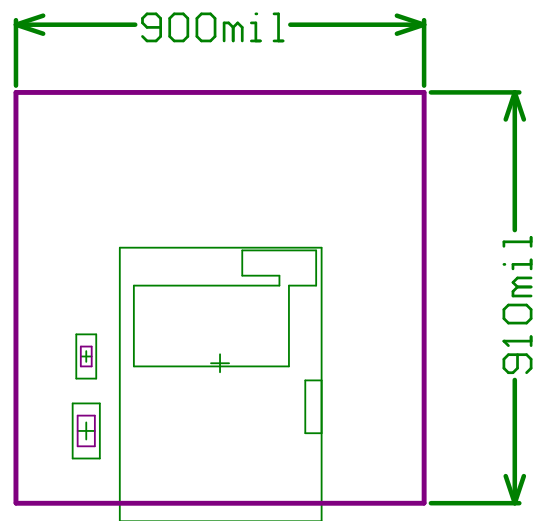


LAYERS



NO VENDOR MARKINGS, VENDOR IS NOT TO ADD OR REMOVE ANYTHING
R414 Copyright www.RFduino.com 12/12/2013

NO VENDOR MARKINGS, VENDOR IS NOT TO ADD OR REMOVE ANYTHING
R414 Copyright www.RFduino.com 12/12/2013

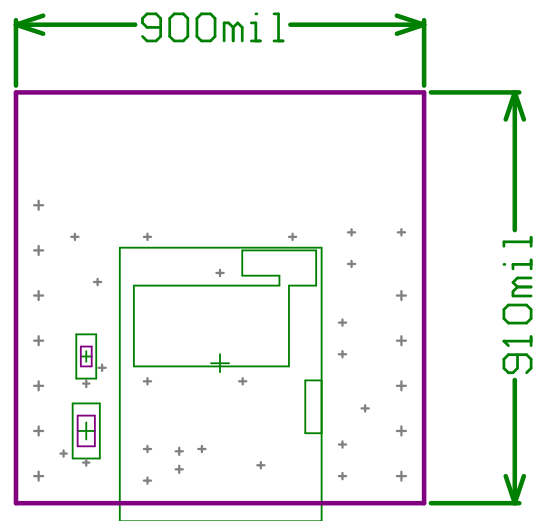


LAYERS



NO VENDOR MARKINGS, VENDOR IS NOT TO ADD OR REMOVE ANYTHING
R414 Copyright www.RFduino.com 12/12/2013

NO VENDOR MARKINGS, VENDOR IS NOT TO ADD OR REMOVE ANYTHING
R414 Copyright www.RFduino.com 12/12/2013



LAYERS

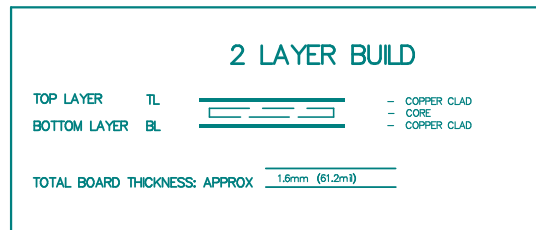
DRILL GUIDE (SLOTS)

DIMENSIONS

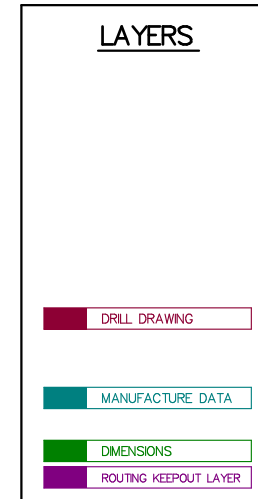
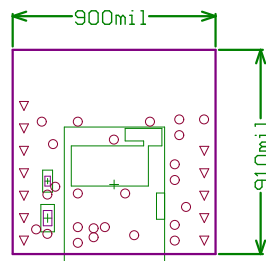
ROUTING KEEPOUT LAYER

NO VENDOR MARKINGS, VENDOR IS NOT TO ADD OR REMOVE ANYTHING
R414 Copyright www.RFduino.com 12/12/2013

LAYER STACK CONFIGURATION



NO VENDOR MARKINGS, VENDOR IS NOT TO ADD OR REMOVE ANYTHING
R414 Copyright www.RFduino.com 12/12/2013



NO VENDOR MARKINGS, VENDOR IS NOT TO ADD OR REMOVE ANYTHING
R414 Copyright www.RFduino.com 12/12/2013

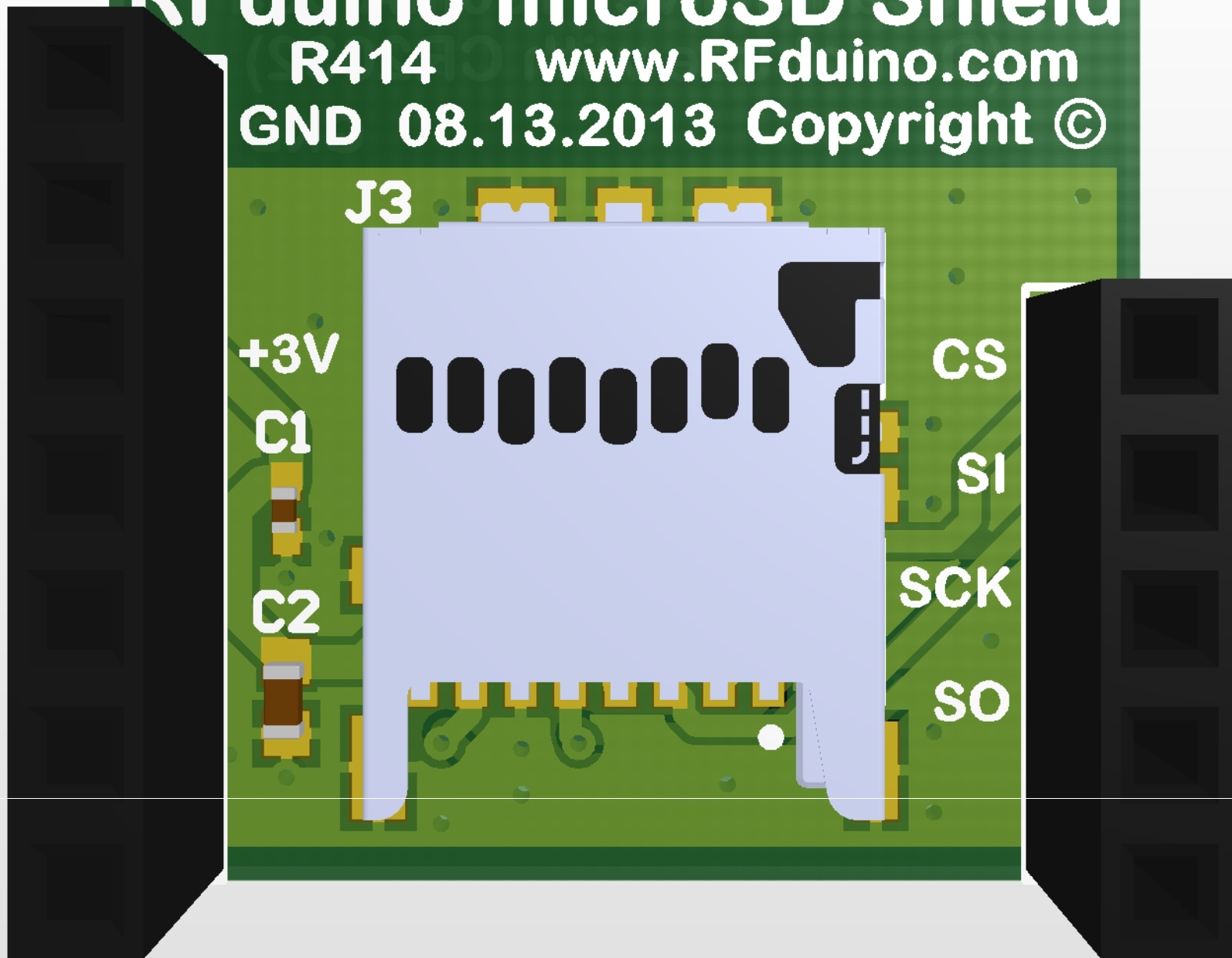
NOTES: UNLESS OTHERWISE SPECIFIED

1. MATERIAL: FR4
2. FINISH: BLACK GLOSS LPI SOLDERMASK OVER BARE COPPER, BOTH SIDES OF BOARD
ALL EXPOSED CONDUCTIVE PATTERN AREAS NOT COVERED WITH SOLDER MASK OR OTHER PLATING SHALL BE PLATED WITH IMMERSION GOLD
3. SILKSCREEN BOTH SIDES USING THE WHITE NON-CONDUCTIVE EPOXY INK,
SILKSCREEN INC NOT ALLOWED ON COMPONENT PADS
4. NO VENDOR MARKINGS OF ANY TYPE, ON ANY LAYER OF THE PCB
IT IS OK FOR VENDOR TO PUT MARKINGS ON THE RAILS OF THE ARRAY ONLY
5. IMPEDANCE CONTROL REQUIREMENT
6. FINISHED FAB AND WORKMANSHIP PER IPC-A-600, CLASS2
7. RoHS COMPLIANCE REQUIRED
8. ALL VIAS ARE TO BE FULLY PLUGGED WITH SOLDERMASK
9. IF THERE ARE ANY DISCREPANCIES, IT IS THE VENDORS RESPONSIBILITY TO CONTACT THE CUSTOMER
10. NO X-OUTS
11. 100% ELECTRICAL TEST FOR OPEN AND CLOSED REQUIRED

Symbol	Hit Count	Tool Size	Plated	Hole Type
○	25	15mil (0.381mm)	PTH	Round
▽	12	40mil (1.016mm)	PTH	Round
	37 Total			

RFD22130 RFduino microSD Shield

R414 www.RFduino.com
GND 08.13.2013 Copyright ©



Use with a power supply
that can deliver 100mA peak
(Do not use with CR2032)

GND

+3V

GPIO 6 / SD_CS

GPIO 5 / MOSI

GPIO 4 / SCK

GPIO 3 / MISO

