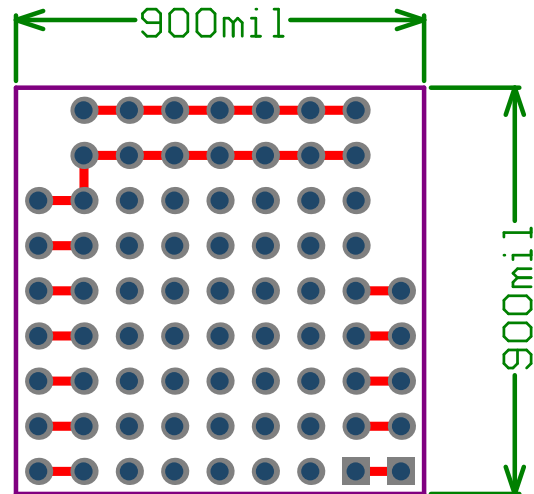


NO VENDOR MARKINGS, VENDOR IS NOT TO ADD OR REMOVE ANYTHING  
R405 Copyright www.RFduino.com 12/12/2013

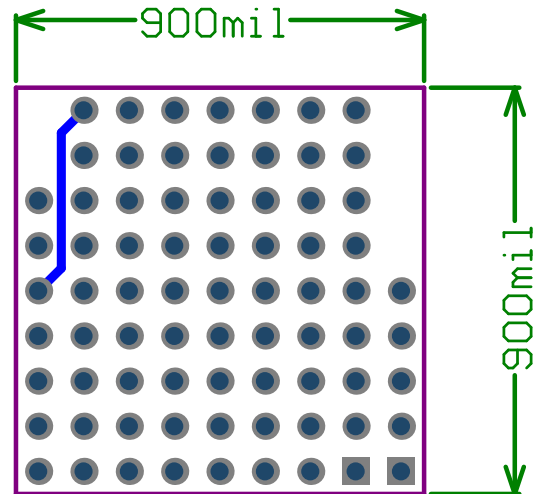


## LAYERS



NO VENDOR MARKINGS, VENDOR IS NOT TO ADD OR REMOVE ANYTHING  
R405 Copyright www.RFduino.com 12/12/2013

NO VENDOR MARKINGS, VENDOR IS NOT TO ADD OR REMOVE ANYTHING  
R405 Copyright www.RFduino.com 12/12/2013



## LAYERS

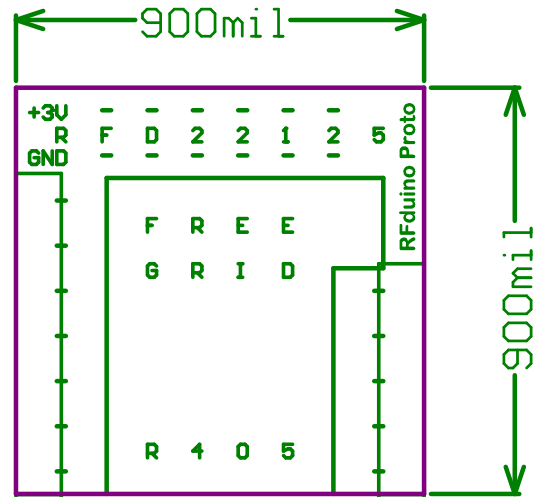
 BOTTOM COPPER

 DIMENSIONS

 ROUTING KEEPOUT LAYER

NO VENDOR MARKINGS, VENDOR IS NOT TO ADD OR REMOVE ANYTHING  
R405 Copyright www.RFduino.com 12/12/2013

NO VENDOR MARKINGS, VENDOR IS NOT TO ADD OR REMOVE ANYTHING  
R405 Copyright www.RFduino.com 12/12/2013



## LAYERS

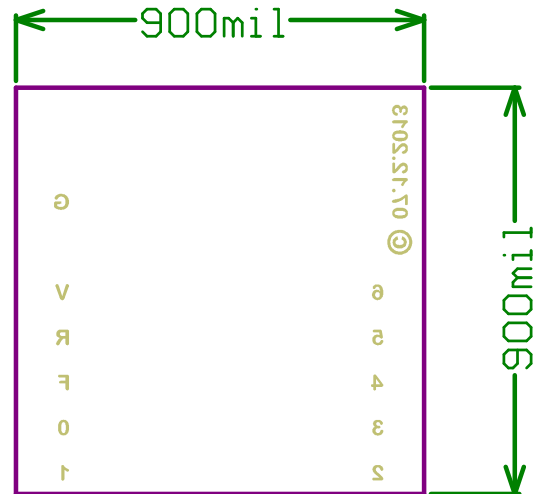
TOP OVERLAY

DIMENSIONS

ROUTING KEEPOUT LAYER

NO VENDOR MARKINGS, VENDOR IS NOT TO ADD OR REMOVE ANYTHING  
R405 Copyright www.RFduino.com 12/12/2013

NO VENDOR MARKINGS, VENDOR IS NOT TO ADD OR REMOVE ANYTHING  
R405 Copyright www.RFduino.com 12/12/2013



## LAYERS

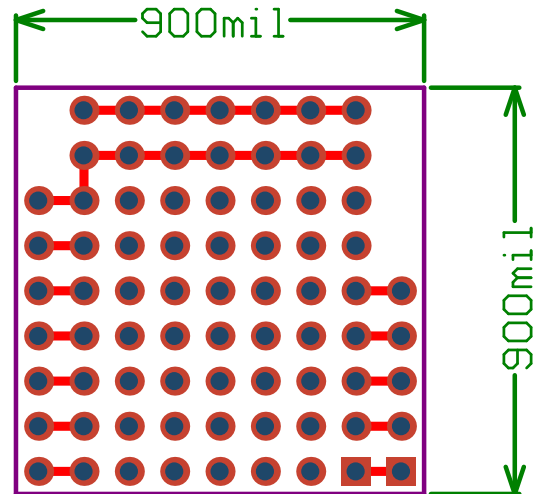
 BOTTOM OVERLAY

 DIMENSIONS

 ROUTING KEEPOUT LAYER

NO VENDOR MARKINGS, VENDOR IS NOT TO ADD OR REMOVE ANYTHING  
R405 Copyright www.RFduino.com 12/12/2013

NO VENDOR MARKINGS, VENDOR IS NOT TO ADD OR REMOVE ANYTHING  
R405 Copyright www.RFduino.com 12/12/2013

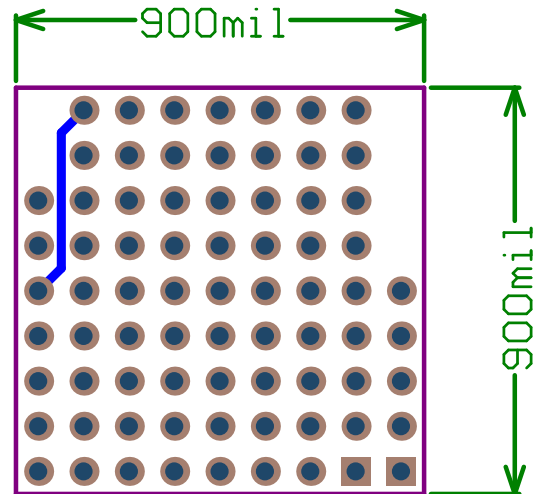


## LAYERS



NO VENDOR MARKINGS, VENDOR IS NOT TO ADD OR REMOVE ANYTHING  
R405 Copyright www.RFduino.com 12/12/2013

NO VENDOR MARKINGS, VENDOR IS NOT TO ADD OR REMOVE ANYTHING  
R405 Copyright www.RFduino.com 12/12/2013

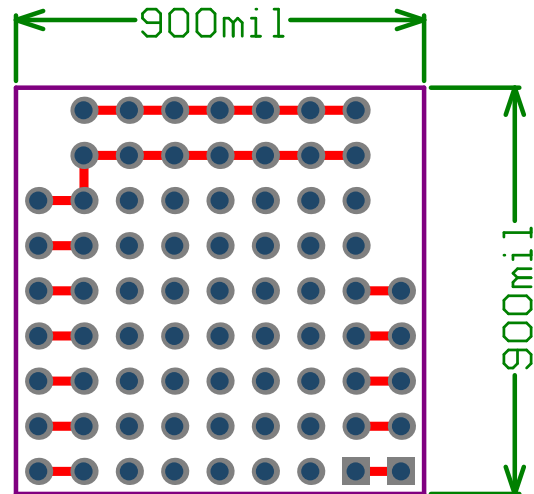


## LAYERS



NO VENDOR MARKINGS, VENDOR IS NOT TO ADD OR REMOVE ANYTHING  
R405 Copyright www.RFduino.com 12/12/2013

NO VENDOR MARKINGS, VENDOR IS NOT TO ADD OR REMOVE ANYTHING  
R405 Copyright www.RFduino.com 12/12/2013

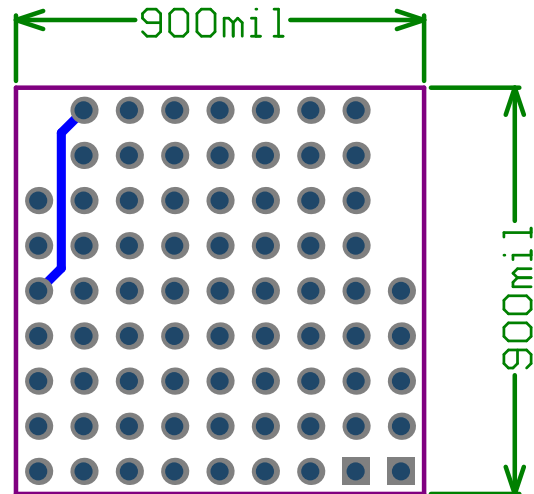


## LAYERS



NO VENDOR MARKINGS, VENDOR IS NOT TO ADD OR REMOVE ANYTHING  
R405 Copyright www.RFduino.com 12/12/2013

NO VENDOR MARKINGS, VENDOR IS NOT TO ADD OR REMOVE ANYTHING  
R405 Copyright www.RFduino.com 12/12/2013



## LAYERS

 BOTTOM COPPER

 BOTTOM PASTE

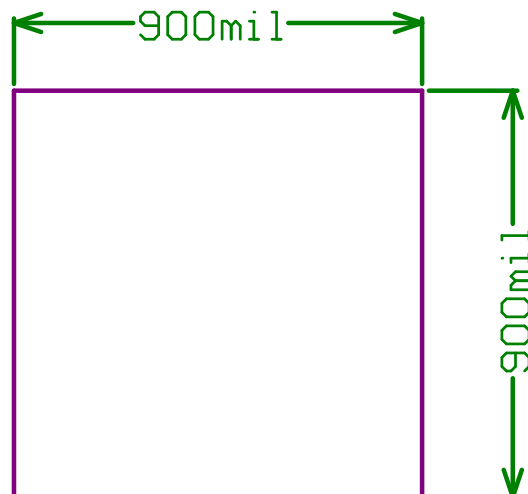
 DIMENSIONS

 ROUTING KEEPOUT LAYER

NO VENDOR MARKINGS, VENDOR IS NOT TO ADD OR REMOVE ANYTHING  
R405 Copyright www.RFduino.com 12/12/2013



NO VENDOR MARKINGS, VENDOR IS NOT TO ADD OR REMOVE ANYTHING  
R405 Copyright www.RFduino.com 12/12/2013

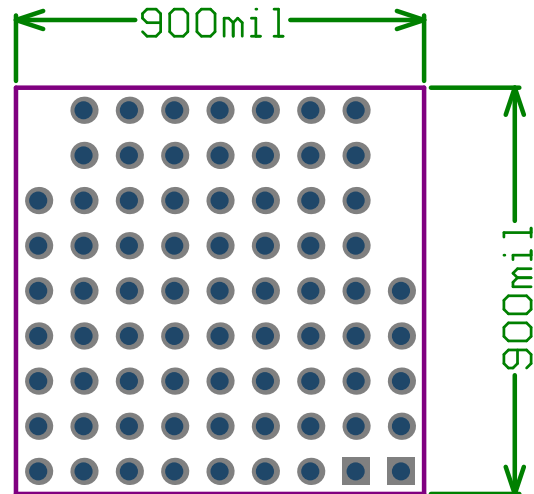


## LAYERS



NO VENDOR MARKINGS, VENDOR IS NOT TO ADD OR REMOVE ANYTHING  
R405 Copyright www.RFduino.com 12/12/2013

NO VENDOR MARKINGS, VENDOR IS NOT TO ADD OR REMOVE ANYTHING  
R405 Copyright www.RFduino.com 12/12/2013

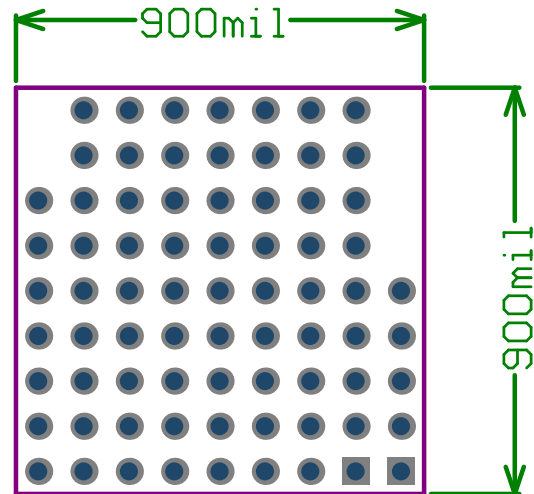


## LAYERS



NO VENDOR MARKINGS, VENDOR IS NOT TO ADD OR REMOVE ANYTHING  
R405 Copyright www.RFduino.com 12/12/2013

NO VENDOR MARKINGS, VENDOR IS NOT TO ADD OR REMOVE ANYTHING  
R405 Copyright www.RFduino.com 12/12/2013

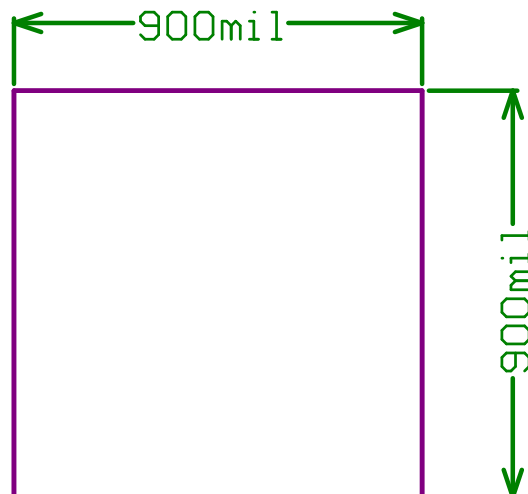


## LAYERS



NO VENDOR MARKINGS, VENDOR IS NOT TO ADD OR REMOVE ANYTHING  
R405 Copyright www.RFduino.com 12/12/2013

NO VENDOR MARKINGS, VENDOR IS NOT TO ADD OR REMOVE ANYTHING  
R405 Copyright www.RFduino.com 12/12/2013

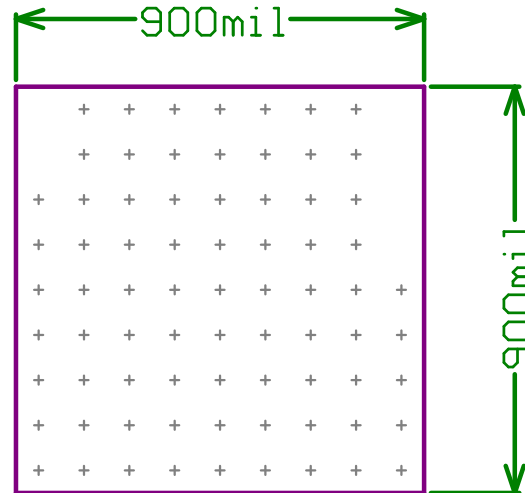


## LAYERS



NO VENDOR MARKINGS, VENDOR IS NOT TO ADD OR REMOVE ANYTHING  
R405 Copyright www.RFduino.com 12/12/2013

NO VENDOR MARKINGS, VENDOR IS NOT TO ADD OR REMOVE ANYTHING  
R405 Copyright www.RFduino.com 12/12/2013



## LAYERS

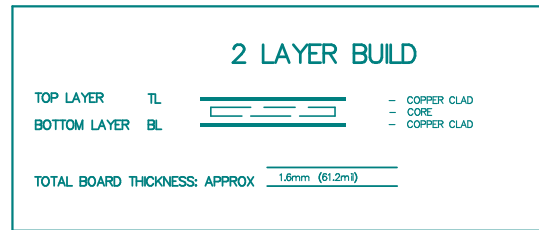
DRILL GUIDE (SLOTS)

DIMENSIONS

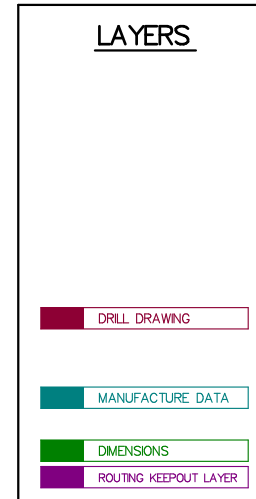
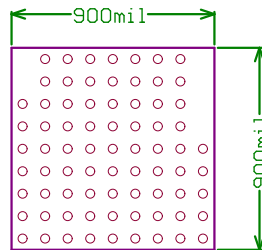
ROUTING KEEPOUT LAYER

NO VENDOR MARKINGS, VENDOR IS NOT TO ADD OR REMOVE ANYTHING  
R405 Copyright www.RFduino.com 12/12/2013

## LAYER STACK CONFIGURATION



NO VENDOR MARKINGS, VENDOR IS NOT TO ADD OR REMOVE ANYTHING  
R405 Copyright www.RFduino.com 12/12/2013

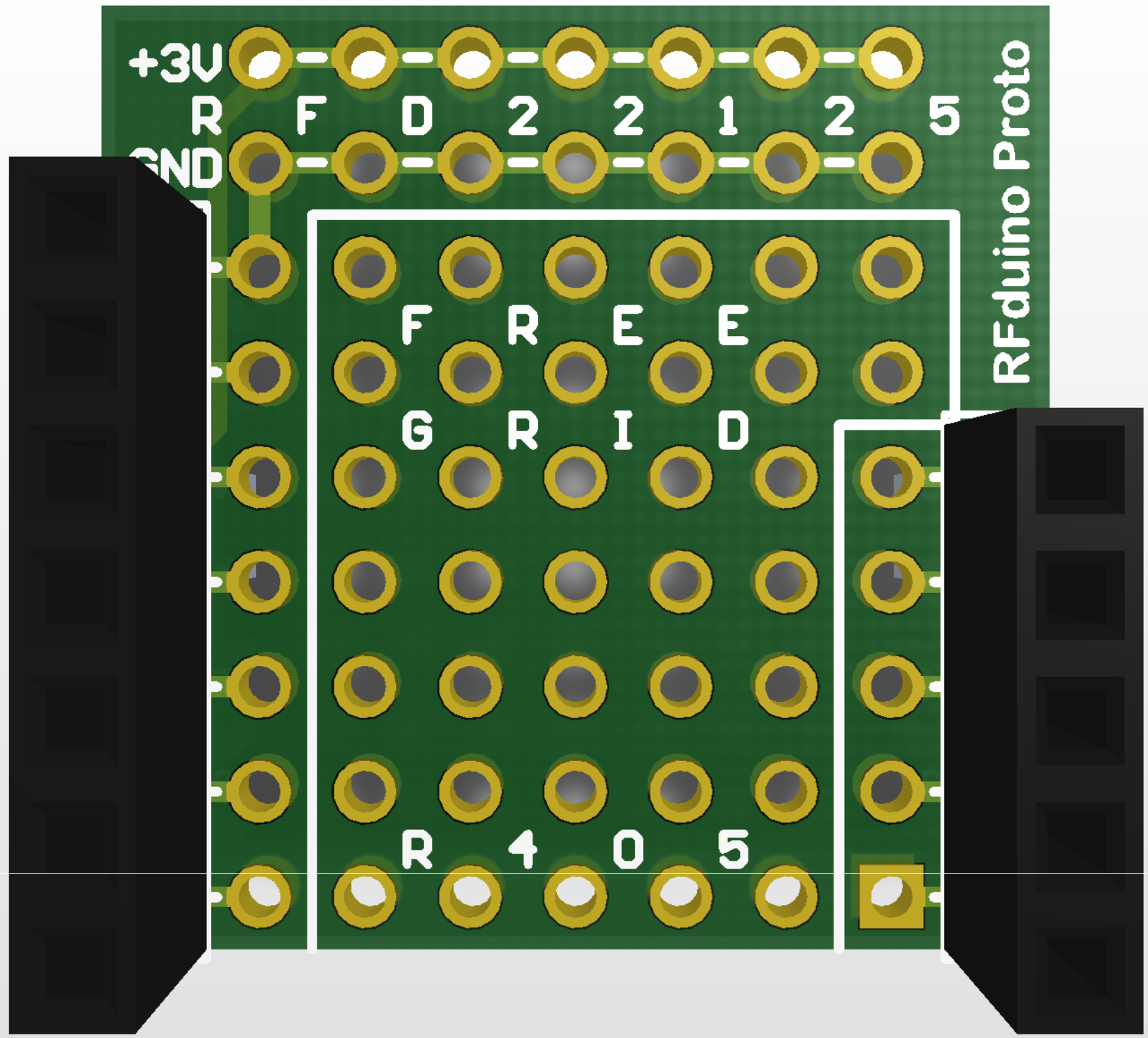


NO VENDOR MARKINGS, VENDOR IS NOT TO ADD OR REMOVE ANYTHING  
R405 Copyright www.RFduino.com 12/12/2013

### NOTES: UNLESS OTHERWISE SPECIFIED

1. MATERIAL: FR4
2. FINISH: BLACK GLOSS LPI SOLDERMASK OVER BARE COPPER, BOTH SIDES OF BOARD  
ALL EXPOSED CONDUCTIVE PATTERN AREAS NOT COVERED WITH SOLDER MASK OR OTHER PLATING SHALL BE PLATED WITH IMMERSION GOLD
3. SILKSCREEN BOTH SIDES USING THE WHITE NON-CONDUCTIVE EPOXY INK,  
SILKSCREEN INK NOT ALLOWED ON COMPONENT PADS
4. NO VENDOR MARKINGS OF ANY TYPE, ON ANY LAYER OF THE PCB  
IT IS OK FOR VENDOR TO PUT MARKINGS ON THE RAILS OF THE ARRAY ONLY
5. IMPEDANCE CONTROL REQUIREMENT
6. FINISHED FAB AND WORKMANSHIP PER IPC-A-600, CLASS2
7. RoHS COMPLIANCE REQUIRED
8. ALL VIAS ARE TO BE FULLY PLUGGED WITH SOLDERMASK
9. IF THERE ARE ANY DISCREPANCIES, IT IS THE VENDORS RESPONSIBILITY TO CONTACT THE CUSTOMER
10. NO X-OUTS
11. 100% ELECTRICAL TEST FOR OPEN AND CLOSED REQUIRED

Symbol	Hit Count	Tool Size	Plated	Hole Type
○	75	40mil (1.016mm)	PTH	Round
	75 Total			



+3V

R

F

D

2

2

1

2

5

GND

F

R

E

E

G

R

I

D

R

4

0

5

RFduino Proto

© 07.12.2013

