

# RFDIGITAL CORPORATION

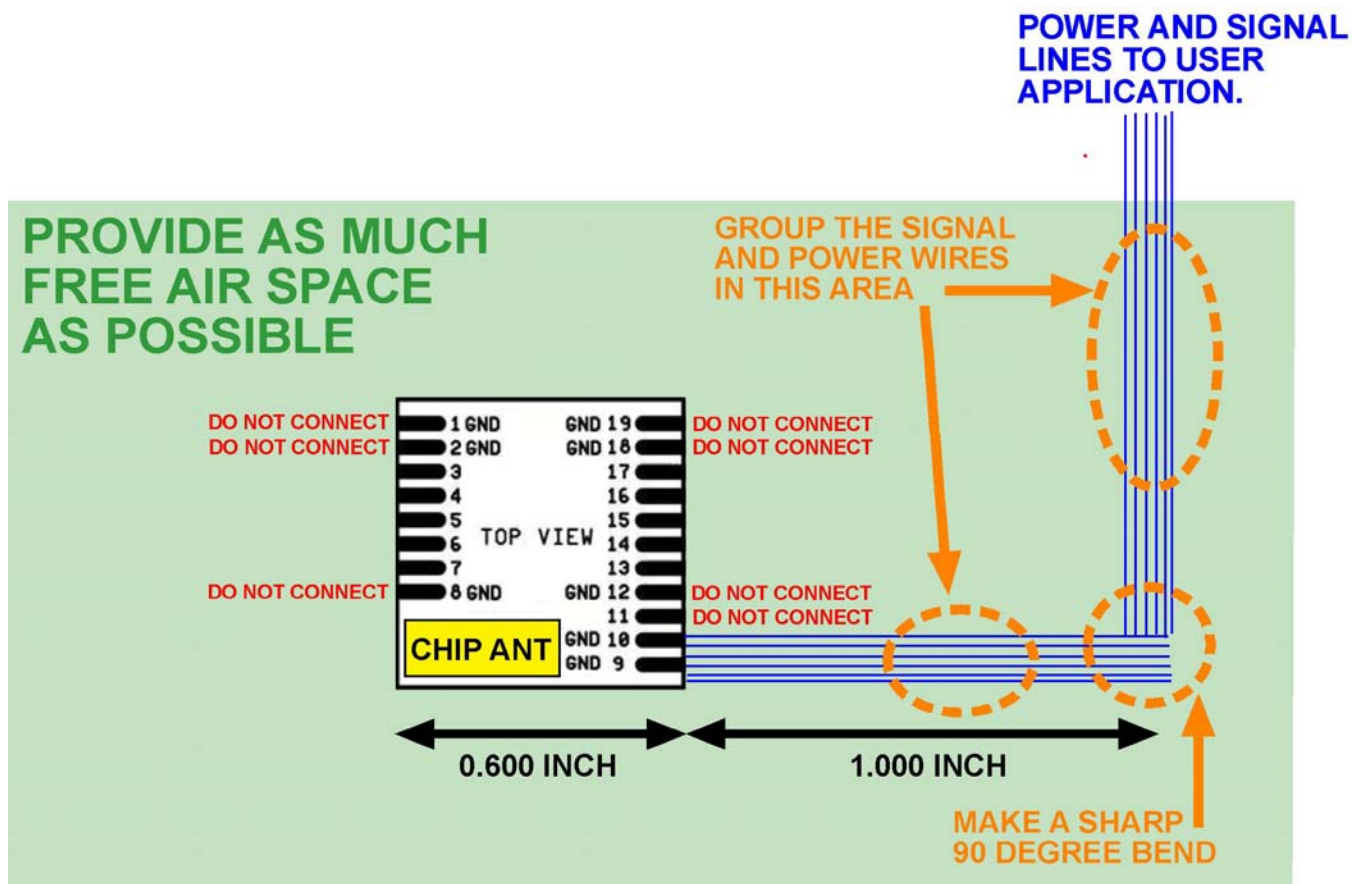
13715 Alton Pkwy • Irvine • CA • 92618  
Tel: 949.610.0008 • Fax: 949.610.0009  
www.rfdigital.com • sales@rfdigital.com

## RFD76005 15mm Module Chip Antenna Application

1/22/2009 5:46 PM

This application is for RFD21731, RFD21732, and RFD21733 type RF Digital modules, have internal, on-board chip antennas.

Solid wires can be soldered directly onto the module pads as shown. Only pin 9 or pin 10 or both are used for providing a signal and power ground to the module from the user application. All other ground pins are to be left open. If you have any questions, please email support@rfdigital.com



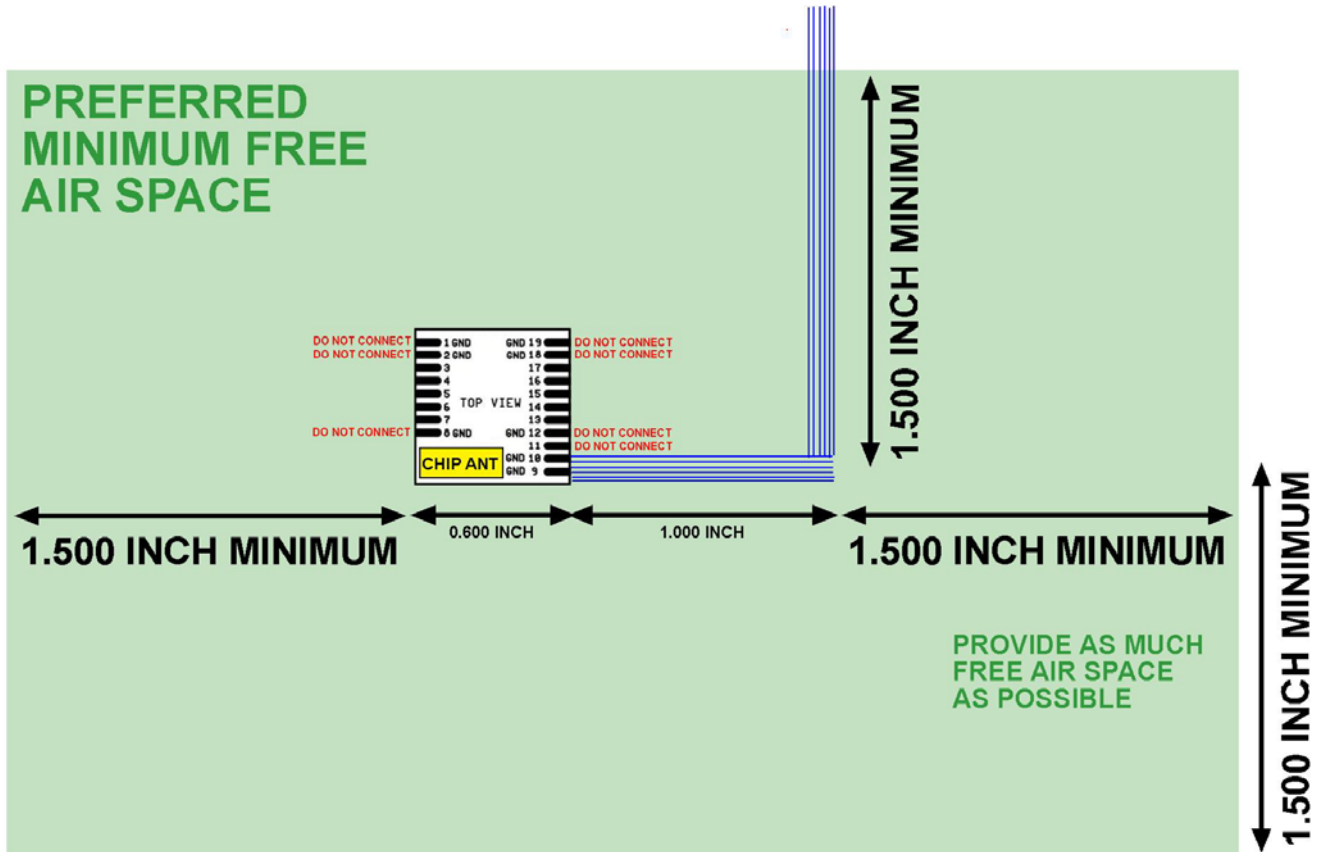
For 15mm RF Digital Modules with internal antenna, (c) RF Digital Corp. 1-22-09

# RF DIGITAL

C O R P O R A T I O N

13715 Alton Pkwy • Irvine • CA • 92618  
 Tel: 949.610.0008 • Fax: 949.610.0009  
 www.rfdigital.com • sales@rfdigital.com

Provide as much free air space as possible. If possible provide at least the minimums shown below. If the minimums below can not be achieved, then provide as much as possible, the more you provide the better range you will have.



For 15mm RF Digital Modules with internal antenna, (c) RF Digital Corp. 1-22-09

This document is provided as a reference only.

END OF DOCUMENT.