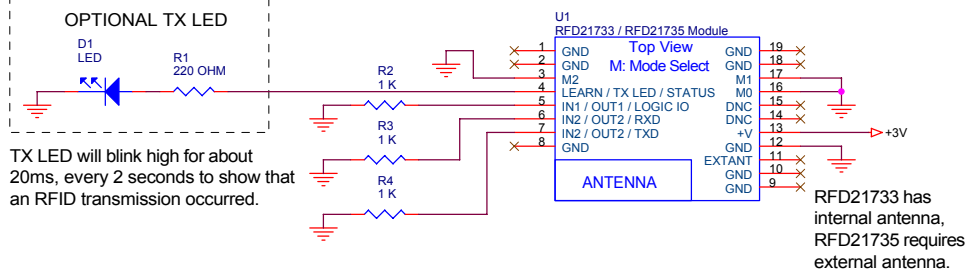


Active RFID Transmitter

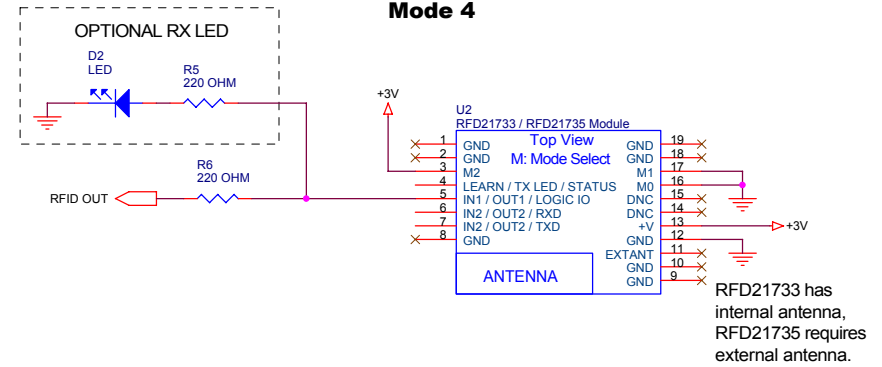
Mode 0

If not used, leave P0.3 unconnected.



Switch Receiver

Mode 4



Every 2 seconds when the Switch Receiver receives a transmission from the RFID transmitter, the Switch Receiver's P0.4 will be driven high for 500 milliseconds.

P0.4 is an active high output and can be used to drive any logic input, the series resistor on P0.4 is optional, but recommended to protect the radio from excessive loading.

The RX LED is for testing, to visually show when an RFID transmission has been received.

+3V supply can be between +1.9V and +3.6V

Patents Pending

RFDP8 8-Mode Chart for RFD21733 / RFD21735
© RF Digital Corp. 01.27.09 8:34 PM

Mode	Description	Mode Select Inputs			Learn / Status				
		2	1	0	IN 3	IN 2	IN 1		TX LED
0	Active RFID Transmitter	0	0	0	IN 3	IN 2	IN 1	TX LED	
1	3 Input Switch Logic Transmitter	0	0	1	IN 3	IN 2	IN 1	TX LED	
2	Serial UART Transceiver, 9600, N, 8, 1	0	1	0	TXD IN	RXD OUT	LOGIC I/O	X	
3	Serial UART Transceiver, 9600, N, 8, 1	0	1	1	TXD IN	RXD OUT	LOGIC I/O	ESN LEARN	Network
4	3 Output Switch Logic Receiver - 500ms	1	0	0	OUT 3	OUT 2	OUT 1	X	
5	3 Output Switch Logic Receiver - 500ms	1	0	1	OUT 3	OUT 2	OUT 1	ESN LEARN	Network
6	3 Output Switch Logic Receiver - 20ms	1	1	0	OUT 3	OUT 2	OUT 1	X	
7	3 Output Switch Logic Receiver - 20ms	1	1	1	OUT 3	OUT 2	OUT 1	ESN LEARN	Network
RFD21733 / RFD21735 Pin Number:		3	17	16	7	6	5	4	

Please contact RF Digital anytime for application support questions at support@rfdigital.com

RFID TO SWITCH RX 500MS

Description:

Active RFID transmitter, transmits its ESN every 2 seconds. Every 2 seconds when the Switch Receiver, receives a transmission from the RFID transmitter, it drives its output P0.4 high for a duration of 500 milliseconds.

RFD76002 Application

For Part Number:
RFD21733 / RFD21735

02-01-09 12:01 PM

(C) Copyright 2009, RF Digital Corporation

RF DIGITAL
CORPORATION