

Installation and Ordering Instructions

General Description

The RFS APM40 mounting kits are suitable for all base station antennas up to 2.6m in length.

Benefits

- One mount kit fits all.
This single mount kit can be used on the RFS range of CDMA800, GSM900, GSM1800, PCS1900, UMTS2100 and all multiband antennas.
- Convenient, one handed adjustment.
This new design incorporates self-captivated bolts to allow a rigger to easily adjust using one hand.
- A single flexible mount system.
The one system incorporates all options required for optimal adjustment flexibility.

Features

- A basic direct mount kit which can have added:
Optional beam sliding tilt mount for mechanical downtilt
Optional scissors tilt for fixed at mast (or wall) downtilt
Optional azimuth adjustment independent of mast
- All kits are fully upgradeable
- Pipe diameter: 60-120 mm, or 30-60mm with optional adapter.
- Wall mount option
- Mechanical downtilt:
0-7.5° for 2.6m antennas
0-10° for 2m antennas
0-15° for 1.3m antennas
- Azimuth adjustment up to +/-30°
- Downtilt angle indicator
- Suitable for industrial and marine environments



Antenna Ordering Information [eg: APX18-206516L-A (Antenna + Direct pipe mount)]

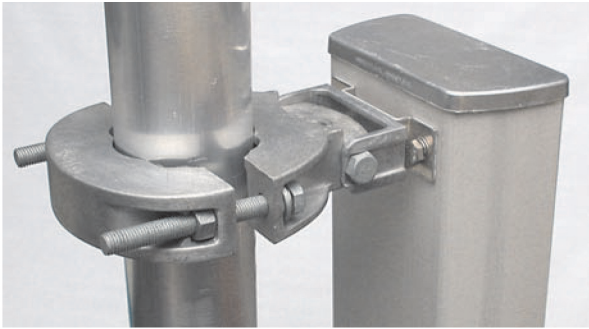
Antenna Suffix	Type of Mounting	Mounting Kit
A	Direct Pipe (no tilt)	APM40-1
B	Azimuth upgrade	APM40-1 & APM40-E3
C	Beam tilt	APM40-2 / APM40-3 / APM40-4 / APM40-5 / APM40-5D / APM40-5E / APM40-3HD*
D	Beam tilt with azimuth upgrade	APM40-2 & APM40-E3
E	Beam tilt with scissor upgrade	APM40-2 & APM40-E2
F	Beam tilt with scissor and azimuth upgrades	APM40-2 & APM40-E2 & APM40-E3
-	Direct to beam upgrade	APM40-E1
-	Bracket interface for APM40	APM40-E4
7	No mount kit	-
-	Pipe adapter for 30-60mm pipes	APM40-E6

* Model dependent

Mechanical Specifications

Weight of kit, kg (lb)	1.8 (4.0) Direct kit APM40-1 3.4 (7.49) Beam tilt kit APM40-2 5.4 (11.9) Beam tilt kit APM40-3, APM40-3HD 2.7 (5.95) Beam tilt kit APM40-4 13 (28.6) Beam tilt kit APM40-5 8 (17.6) Beam tilt kit APM40-5D 10.0 (22.0) Beam tilt kit APM40-5E
Mounting kit material	Aluminum, Galvanized steel
Packed size, H x W x D, mm (in)	1250 x 200 x 70 (49.2 x 7.9 x 2.7) Beam tilt kit 950 x 200 x 70 (37.4 x 7.9 x 2.8) APM40-4 Beam tilt kit 730 x 200 x 45 (28.7 x 7.9 x 1.8) direct kit
Packaging material	Plastic sleeve
Tools required	18mm (0.75") AF Socket (3/8" drive recommended), 10mm (0.4") AF spanner or socket

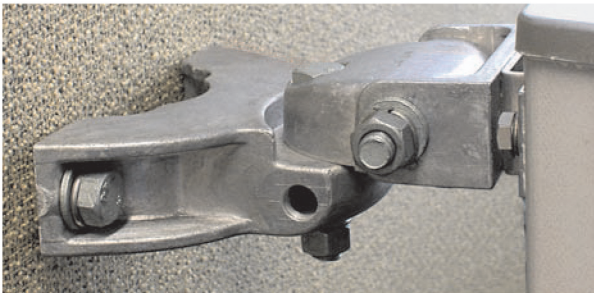
Installation and Ordering Instructions



APM40-1
Direct Mount configuration. Pole mounted.



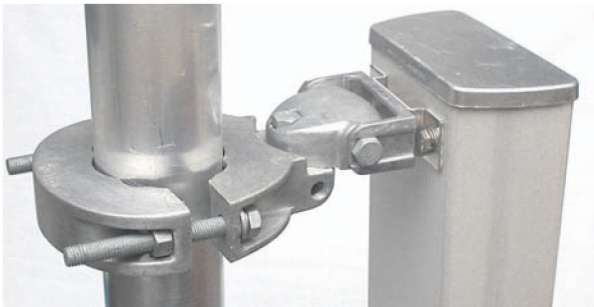
APM40-2 or APM40-3
Beam tilt configuration at 0deg. Pole or Wall mount.



APM40-1 + APM40-E3
Direct Mount configuration with Azimuth adjustment. Wall mounted.



APM40-2 + APM40-E2 + APM40-E3
Beam tilt configuration at 0deg with scissor kit and azimuth adjustment. Pole or Wall mount.



APM40-1 + APM40-E3
Direct Mount configuration with Azimuth adjustment. Pole mounted.



APM40-2 + APM40-E3
Beam tilt configuration at 0 deg with Azimuth adjustment. Pole or Wall mount.



APM40-2 + APM40-E2 + APM40-E3
Beam tilt configuration at 6deg with scissor kit and azimuth adjustment. Pole or Wall mount.



APM40-2 + APM40-E2
Beam tilt configuration with scissor kit. Pole or Wall mount.



APM40-E6
Adapter for 30-60mm pipe.

All information contained in the present sheet is subject to confirmation at time of ordering.