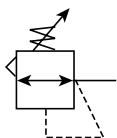


# Compressed Air Filters

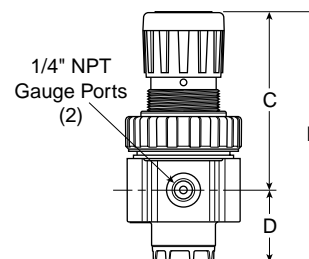
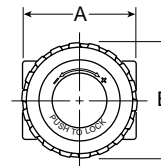
## Air Preparation Units - 05R Regulators - Economy

### 1/4", 3/8" NPT - Basic 1/4" Body



#### Features

- Secondary aspiration plus balanced poppet provides quick response and accurate pressure regulation.
- Rolling diaphragm for extended life.
- Removable non-rising knob for panel mounting and tamper resistance.
- Easily serviced.
- Reverse Flow.
- High Flow: 1/4" - 30 SCFM<sup>§</sup>  
3/8" - 40 SCFM<sup>§</sup>



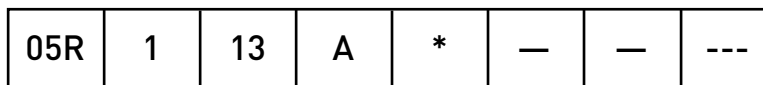
Port Size	NPT
Without Gauge	
1/4"	05R113A*
3/8"	05R213A*
With 160 PSI Gauge	
1/4"	05R118A*
3/8"	05R218A*

05R Regulator Dimensions		
A	B	C
2.00 (51)	2.06 (52)	3.16 (80)
D	E	
1.28 (32)	4.44 (113)	

NOTE: 1.53 Dia. (39mm) hole required for panel mounting.

§ SCFM = Standard cubic feet per minute at 100 PSIG inlet, 90 PSIG no flow secondary setting and 10 PSIG pressure drop.

### Ordering Information



Port Size
1 1/4 Inch
2 3/8 Inch

Pressure Range
Without Gauge 13 125 PSIG
With Gauge** 18 125 PSIG

Relief
A Relieving

Engineering Level
* Will be Entered at Factory

Port Type
Blank NPT

\* 1/4 & 3/8 inch meet ISO 1179-1 Standard.

Options
Blank No Options

† Inlet Pressure is 100 PSIG. For other pressures, contact factory.

Preset / Pressure Limited
Blank None

\*\* Includes 1-1/2" Dial Face Gauge

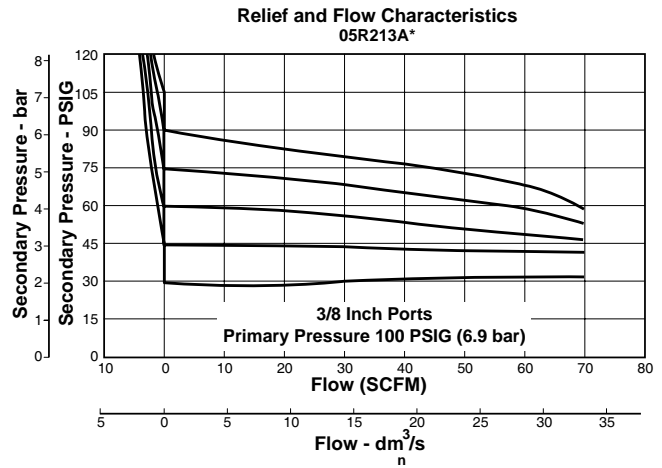
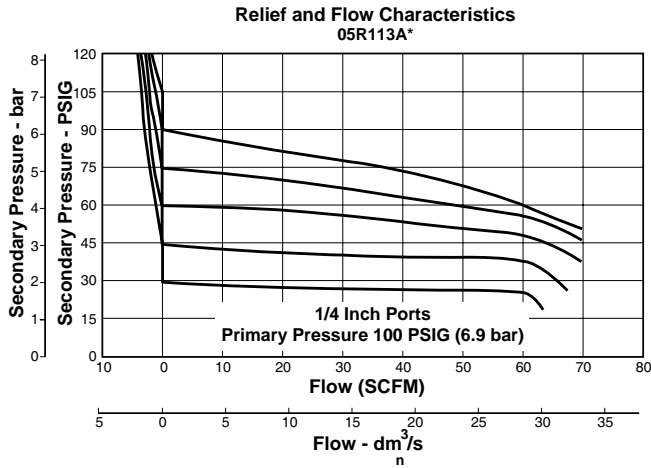


# Compressed Air Filters

## Air Preparation Units 05R Air Line Regulators

### Technical Information

Compressed Air Filters



#### CAUTION:

**REGULATOR PRESSURE ADJUSTMENT** – The working range of knob adjustment is designed to permit outlet pressures within their full range. Pressure adjustment beyond this range is also possible because the knob is not a limiting device. This is a common characteristic of most industrial regulators, and limiting devices may be obtained only by special design.

For best performance, regulated pressure should always be set by increasing the pressure up to the desired setting.

**⚠ WARNING**

Product rupture can cause serious injury.  
Do not connect regulator to bottled gas.  
Do not exceed maximum primary pressure rating.

#### 05R Regulator Kits & Accessories

Bonnet Assembly Kit .....	PS915P
Control Knob .....	P04420
Gauges – 1-1/2" Dial Face ????	
30 PSIG [0 to 2.1 bar] .....	K4515N14030
60 PSIG [0 to 4.1 bar] .....	K4515N14060
160 PSIG [0 to 11.0 bar] .....	K4515N14160
300 PSIG [0 to 20.0 bar] .....	K4515N14300
<b>2" Dial Face</b>	
60 PSIG [0 to 4.1 bar] .....	K4520N14060
160 PSIG [0 to 11.0 bar] .....	K4520N14160
Mounting Bracket Kit .....	PS963P
Panel Mount Nut – Metal .....	PS964P
Springs – 1-30 PSIG Range .....	P04427
1-60 PSIG Range .....	P04426
2-125 PSIG Range .....	P04425
2-200 PSIG .....	P02934
Service Kit – Relieving .....	PS908P

#### Specifications

Gauge Ports (2) .....	1/4 Inch
Port Threads .....	1/4, 3/8 Inch
Primary Pressure Rating –	
Maximum Primary Pressure .....	250 PSIG (17.2 bar) Max.
For Secondary Pressure Ranges see above charts.	
Temperature Rating .....	32°F to 175°F (0°C to 80°C)
Low Temperature .....	-4°F to 125°F (-20°C to 52°C)
Weight .....	1.1 lb. (0.49 kg)

#### Materials of Construction

Adjusting Stem .....	Brass
Bonnet .....	Plastic
Body .....	Zinc
Collar, Knob .....	Plastic
Diaphragm .....	Nitrile
Poppet & Cap .....	Plastic
Seals .....	Nitrile
Springs – Poppet & Control .....	Steel

