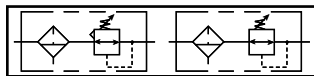


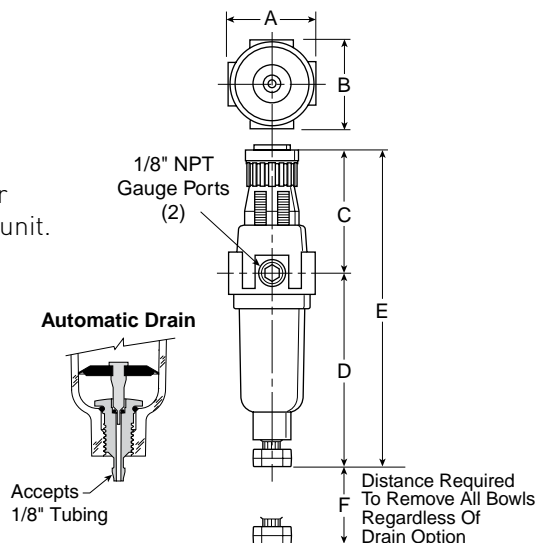
Compressed Air Filters

Air Preparation Units - 14E Filter/Regulator - Miniature 1/8", 1/4" NPT - Basic 1/8" Body



Features

- Excellent water removal efficiency.
- Unbalanced poppet standard.
- Solid control piston for extended life.
- Space saving package offers both filter and regulator features in one integral unit.
- Non-rising adjustment knob.
- Two full flow 1/8" gauge ports.
- High Flow: 1/8" - 16 SCFM[§]
1/4" - 18 SCFM[§]



Port Size	NPT	
	Twist Drain	Automatic Pulse Drain
Poly Bowl [‡]		
1/8"	14E01B13F*	14E05B13F*
1/4"	14E11B13F*	14E15B13F*
Metal Bowl		
1/8"	14E03B13F*	14E07B13F*
1/4"	14E13B13F*	14E17B13F*

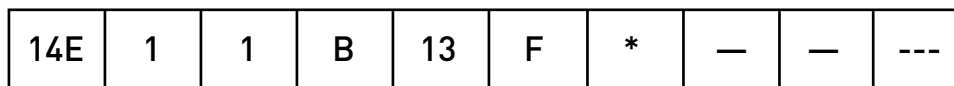
A	B	C
1.62 (41)	1.58 (40)	2.42 (61)
D	D [†]	E
3.79 (96)	3.64 (92)	6.21 (158)
E [†]	F	
6.06 (154)	1.60 (41)	

[‡]For polycarbonate bowl see Caution on page A2.

[§]SCFM = Standard cubic feet per minute at 100 PSIG inlet, 90 PSIG no flow secondary setting and 10 PSIG pressure drop.

NOTE: 1.218 Dia. (31mm) hole required for panel mounting.

Ordering Information



Port Size
0 1/8 Inch
1 1/4 Inch

Elements
B 5 Micron

Relief
F Relieving

Port Type
Blank NPT

Preset / Pressure Limited
Blank None

Bowl Options
Polycarbonate Bowl
1 Twist Drain
5 Automatic Drain
Metal Bowl
3 Twist Drain
7 Automatic Drain

Pressure Range
13 125 PSIG

Engineering Level
* Will be Entered at Factory

Options
Blank No Options

[†]Inlet Pressure is 100 PSIG. For other pressures, contact factory.

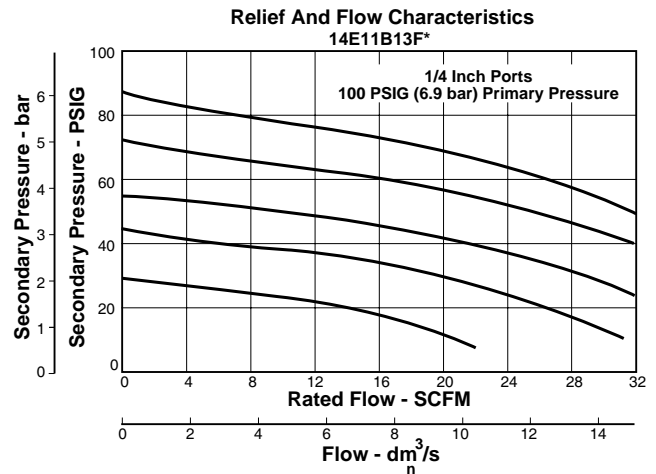
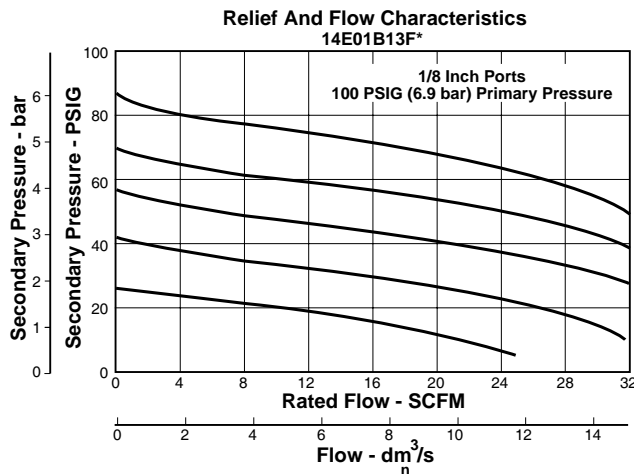


Compressed Air Filters

Air Preparation Units - Prep Air II, 14E Filter/Regulators

Technical Information

Compressed Air Filters



CAUTION:

REGULATOR PRESSURE ADJUSTMENT – The working range of knob adjustment is designed to permit outlet pressures within their full range. Pressure adjustment beyond this range is also possible because the knob is not a limiting device. This is a common characteristic of most industrial regulators, and limiting devices may be obtained only by special design.

For best performance, regulated pressure should always be set by increasing the pressure up to the desired setting.

⚠ WARNING

Product rupture can cause serious injury.
Do not connect regulator to bottled gas.
Do not exceed maximum primary pressure rating.

14E Filter / Regulator Kits & Accessories

Bowl Kits –

- Poly Bowl – Automatic Drain PS408BP
- Twist Drain..... PS404P
- Metal Bowl – Automatic Drain PS451BP
- Twist Drain..... PS447BP

Filter Element Kits – 5 Micron..... PS403P

- Gauges –???? 30 PSIG (0 to 2.1 bar)..... K4515N18030
- 60 PSIG (0 to 4.1 bar)..... K4515N18060
- 160 PSIG (0 to 11.0 bar)..... K4515N18160

Mounting Bracket Kit (Includes Panel Mount Nut)..... PS417BP

Panel Mount Nut P78652

Poppet Kit – Unbalanced..... PS424BP

Service Kit – Relieving PS423P

Springs – 2- 125 PSIG Range (Gold)..... P01173

Specifications

- Automatic Pulse Drain Tube Barb 1/8 Inch
- Bowl Capacity 1 Ounce
- Gauge Ports (2) (Can be used for Full Flow) 1/8 Inch
- Port Threads 1/8, 1/4 Inch

Pressure & Temperature Ratings –

- Polycarbonate Bowl
 - 0 to 150 PSIG (0 to 10.3 bar), 32°F to 125°F (0°C to 52°C)
- Metal Bowl
 - 0 to 250 PSIG (0 to 17.2 bar), 32°F to 175°F (0°C to 80°C)

Secondary Pressure Ranges –

- Standard Pressure 2 to 125 PSIG (0 to 8.6 bar)

- Weight 0.4 lb. (0.18 kg)

Materials of Construction

- Adjusting Nut Brass
- Adjusting Stem & Spring Steel
- Body Zinc
- Bonnet, Knob, Seat, Piston, Holder & Deflector Plastic
- Bowls Available – Transparent Polycarbonate
- Metal (Without Sight Gauge) Zinc
- Drains – Manual – Twist Type
 - Body & Stem Plastic
 - Seals..... Nitrile
- Automatic – Pulse Type
 - Piston & Seals Nitrile
 - Stem, Seat, Adaptor & Washers Aluminum
- Filter Elements – 5 Micron (Standard)..... Plastic
- Seals Nitrile

