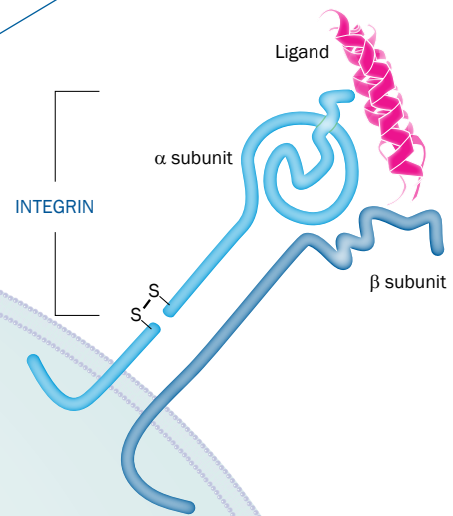


Recombinant Integrins



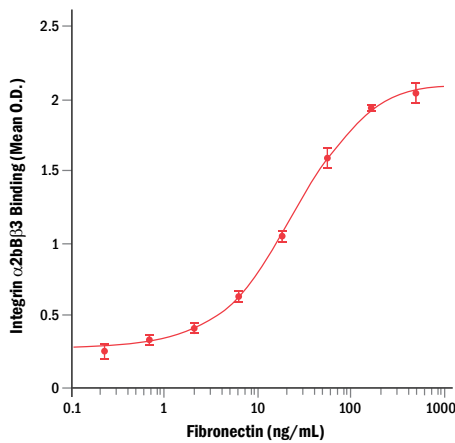
Recombinant Integrins

Integrins are heterodimeric integral membrane proteins that play key roles in regulating cell-cell and cell-extracellular matrix interactions, which together contribute to tissue formation and initiate signaling pathways that control cell movement, differentiation, growth and survival. Twenty-four integrin α/β heterodimers have been identified. These heterodimeric proteins play important roles in cancer, fibrosis, and thrombotic and inflammatory diseases and therefore, have become a key subject of interest for pharmaceutical companies.

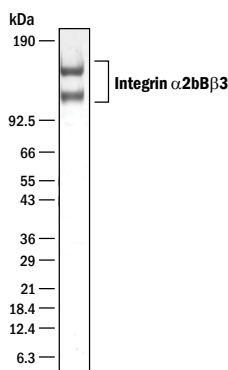
R&D Systems offers a wide selection of Integrin-related research reagents. We are the only company that develops, tests, and sells **active** integrin heterodimers including popular pharmaceutical targets, such as Integrins $\alpha4\beta7$, $\alpha2b\beta3$, $\alpha v\beta1$, $\alpha v\beta3$, $\alpha v\beta5$, and $\alpha v\beta6$ (details below). In addition, we offer a broad range of antibodies against integrin single chains and heterodimers, as well as a number of small molecules and peptides that act as integrin inhibitors or antagonists.

A Subset of Bioactive Recombinant Human Integrin Proteins from R&D Systems

Integrin $\alpha2b\beta3$

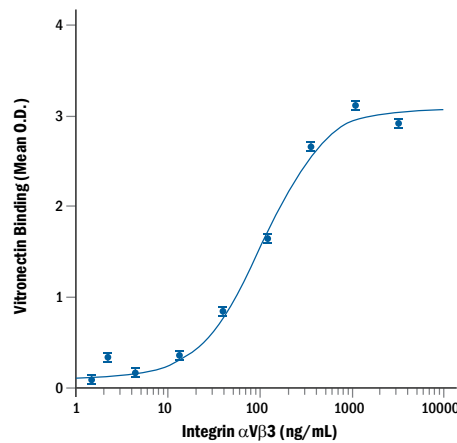


Recombinant Integrin $\alpha2b\beta3$ Binds Fibronectin. Recombinant Human Integrin $\alpha2b\beta3$ (Catalog # 7148-A2) was coated onto microplate wells at 2 $\mu\text{g}/\text{mL}$ and the indicated concentrations of Human Fibronectin (Catalog # 1918-FN) were added. Fibronectin bound to Integrin $\alpha2b\beta3$ in a dose-dependent manner with an apparent $K_D < 1 \text{ nM}$.

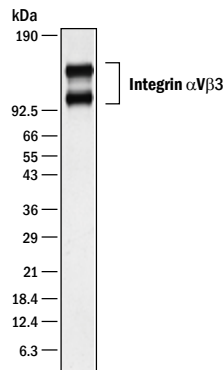


SDS-PAGE Analysis of Recombinant Human Integrin $\alpha2b\beta3$ under Reducing Conditions. To assess purity, Recombinant Human Integrin $\alpha2b\beta3$ (Catalog # 7148-A2; 1 $\mu\text{g}/\text{lane}$) was resolved by 4–20% SDS-PAGE under reducing conditions and visualized by silver staining.

Integrin $\alpha v\beta3$

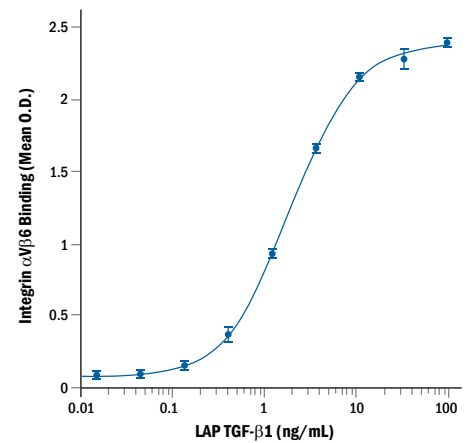


Recombinant Integrin $\alpha v\beta3$ Binds Vitronectin. Recombinant Human Vitronectin (Catalog # 2308-VN) was coated onto microplate wells at 1 $\mu\text{g}/\text{mL}$ and increasing concentrations of Recombinant Human Integrin $\alpha v\beta3$ (Catalog # 3050-AV) were added. Integrin $\alpha v\beta3$ bound to Vitronectin in a dose-dependent manner with an apparent $K_D < 10 \text{ nM}$.

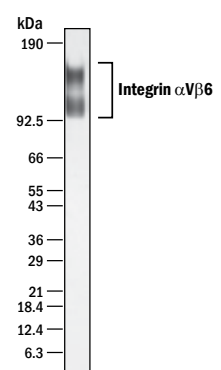


SDS-PAGE Analysis of Recombinant Human Integrin $\alpha v\beta3$ under Reducing Conditions. To assess purity, Recombinant Human Integrin $\alpha v\beta3$ (Catalog # 3050-AV; 1 $\mu\text{g}/\text{lane}$) was resolved by 4–20% SDS-PAGE under reducing conditions and visualized by silver staining.

Integrin $\alpha v\beta6$

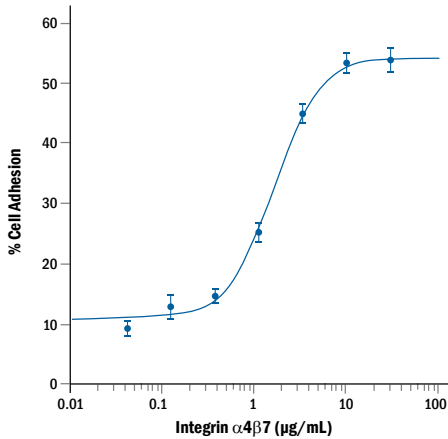


Recombinant Integrin $\alpha v\beta6$ Binds LAP TGF- $\beta1$. Recombinant Human Integrin $\alpha v\beta6$ (Catalog # 3817-AV) was coated onto microplate wells at 2 $\mu\text{g}/\text{mL}$ and increasing concentrations of Recombinant Human LAP TGF- $\beta1$ (Catalog # 246-LP) were added. LAP TGF- $\beta1$ bound to Integrin $\alpha v\beta6$ in a dose-dependent manner with an apparent $K_D < 0.1 \text{ nM}$.



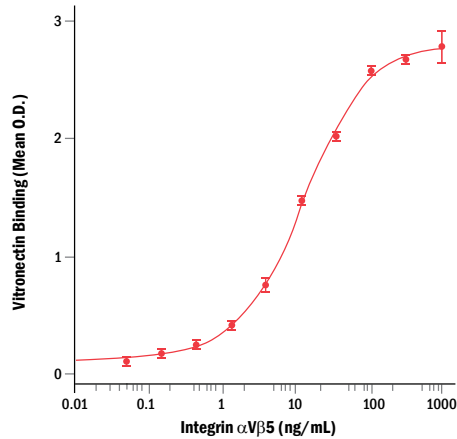
SDS-PAGE Analysis of Recombinant Human Integrin $\alpha v\beta6$ under Reducing Conditions. To assess purity, Recombinant Human Integrin $\alpha v\beta6$ (Catalog # 3817-AV; 1 $\mu\text{g}/\text{lane}$) was resolved by 4–20% SDS-PAGE under reducing conditions and visualized by silver staining.

Integrin $\alpha4\beta7$



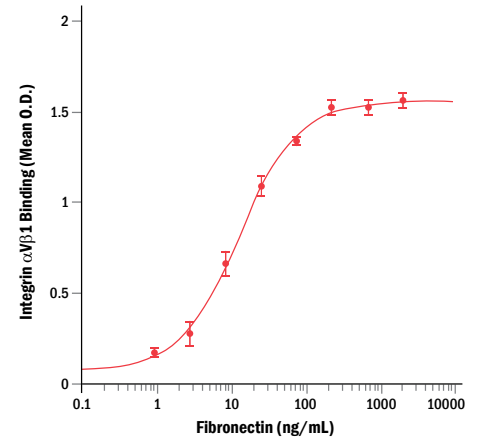
Recombinant Integrin $\alpha4\beta7$ Supports the Adhesion of VCAM-1-transfected Cells. Cultured Chinese hamster ovary (CHO) cells transfected with VCAM-1 were added to plates coated with increasing concentrations of Recombinant Human Integrin $\alpha4\beta7$ (Catalog # 5397-A3). The cells adhered to immobilized Recombinant Human Integrin $\alpha4\beta7$ in a concentration-dependent manner.

Integrin $\alphaV\beta5$

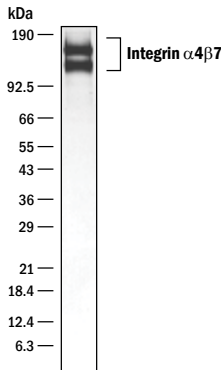


Recombinant Integrin $\alphaV\beta5$ Binds Vitronectin. Recombinant Human Vitronectin (Catalog # 2308-VN) was coated onto microplate wells at $1 \mu\text{g/mL}$ and increasing concentrations of Recombinant Human Integrin $\alphaV\beta5$ (Catalog # 2528-AV) were added. Integrin $\alphaV\beta5$ bound to Vitronectin in a dose-dependent manner with an apparent $K_D < 0.5 \text{ nM}$.

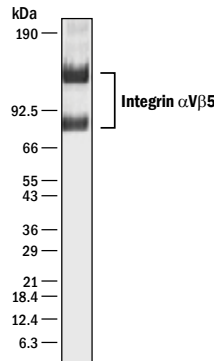
Integrin $\alphaV\beta1$



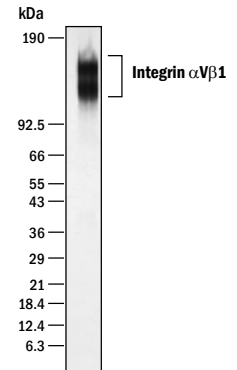
Recombinant Integrin $\alphaV\beta1$ Binds Fibronectin. Recombinant Human Integrin $\alphaV\beta1$ (Catalog # 6579-AV) was coated onto microplate wells at $5 \mu\text{g/mL}$ and increasing concentrations of Human Fibronectin (Catalog # 1918-FN) were added. Fibronectin bound to Integrin $\alphaV\beta1$ in a dose-dependent manner with an apparent $K_D < 0.1 \text{ nM}$.



SDS-PAGE Analysis of Recombinant Human Integrin $\alpha4\beta7$ under Reducing Conditions. To assess purity, Recombinant Human Integrin $\alpha4\beta7$ (Catalog # 5397-A3; $1 \mu\text{g/lane}$) was resolved by 4–20% SDS-PAGE under reducing conditions and visualized by silver staining.



SDS-PAGE Analysis of Recombinant Human Integrin $\alphaV\beta5$ under Reducing Conditions. To assess purity, Recombinant Human Integrin $\alphaV\beta5$ (Catalog # 2528-AV; $1 \mu\text{g/lane}$) was resolved by 4–20% SDS-PAGE under reducing conditions and visualized by silver staining.



SDS-PAGE Analysis of Recombinant Human Integrin $\alphaV\beta1$ under Reducing Conditions. To assess purity, Recombinant Human Integrin $\alphaV\beta1$ (Catalog # 6579-AV; $1 \mu\text{g/lane}$) was resolved by 4–20% SDS-PAGE under reducing conditions and visualized by silver staining.

Recombinant & Natural Proteins

Protein	Species	Accession #	Source	Catalog #	Size	Price
Integrin α 1 β 1	Human	P56199 (Integrin α 1) & P05556 (Integrin β 1)	CHO	7064-AB-025	25 μ g	\$329
	Mouse	Q3V3R4(Integrin α 1) & P09055 (Integrin β 1)	CHO	8188-AB-025	25 μ g	\$329
Integrin α 11 β 1	Human	Q9UKX5 (Integrin α 11) & P05556 (Integrin β 1)	CHO	6357-AB-050	50 μ g	\$329
	Mouse	P61622 (α 11 subunit) & P09055 (β 1 subunit)	CHO	7808-AB-050	50 μ g	\$329
Integrin α 2 β 1	Human	NP_002194 (Integrin α 2) & P05556 (Integrin β 1)	CHO	5698-A2-050	50 μ g	\$329
	Mouse	Q62469.2 (Integrin α 2) & P09055 (Integrin β 1)	CHO	7828-A2-050	50 μ g	\$329
Integrin α 2 β 3	Human	P08514 (Integrin α 2b) & AAA52589 (Integrin β 3)	CHO	7148-A2-025	25 μ g	\$329
Integrin α 3 β 1/VLA-3	Human	P26006 (Integrin α 3) & P05556 (Integrin β 1)	CHO	2840-A3-050	50 μ g	\$329
	Mouse	Q62470 (Integrin α 3); P09055 (Integrin β 1) <i>coming soon</i>				
Integrin α 4 β 1	Human	P13612 (Integrin α 4) & P05556 (Integrin β 1)	CHO	5668-A4-050	50 μ g	\$329
	Mouse	AAH68313 (Integrin α 4) & P09055 (Integrin β 1)	CHO	6054-A4-050	50 μ g	\$329
Integrin α 4 β 7/LPAM-1	Human	P13612 (Integrin α 4); P26010 (Integrin β 7)	CHO	5397-A3-050	50 μ g	\$329
	Mouse NEW	AAH68313 (Integrin α 4); P26011 (Integrin β 7)	CHO	8615-A3-050	50 μ g	\$329
Integrin α 5 β 1	Human	P08648 (Integrin α 5) & P05556 (Integrin β 1)	CHO	3230-A5-050	50 μ g	\$329
	Mouse	P11688 (Integrin α 5) & P09055 (Integrin β 1)	CHO	7728-A5-050	50 μ g	\$329
Integrin α 6 β 1	Human	NP_000201 (α 6 subunit) & P05556 (β 1 subunit)	CHO	7809-A6-050	50 μ g	\$329
	Mouse	Q61739 (α 6 subunit) & P09055 (β 1 subunit)	CHO	7810-A6-050	50 μ g	\$329
Integrin α 6 β 4	Mouse	Q61739 (Integrin α 6) & NP_598424 (Integrin β 4)	CHO	8067-A6-050	50 μ g	\$329
Integrin α 6 β 4X1 isoform	Human	NP_000201 (Integrin α 6) & P16144 (Integrin β 4)	CHO	5497-A6-050	50 μ g	\$329
Integrin α 7 β 1	Mouse	NP_032424(Integrin α 7) & P09055 (Integrin β 1)	CHO	7958-A7-050	50 μ g	\$329
Integrin α 9 β 1	Human	Q13797 (Integrin α 9) & P05556 (Integrin β 1)	CHO	5438-A9-050	50 μ g	\$329
	Mouse	CAC69080 (Integrin α 9) & P09055 (Integrin β 1)	CHO	7826-A9-050	50 μ g	\$329
Integrin α 10 β 1	Human	O75578 (Integrin α 10) & P05556 (Integrin β 1)	CHO	5895-AB-050	50 μ g	\$329
	Mouse	NP_001074522 (Integrin α 10) & P09055 (Integrin β 1)	CHO	7827-AB-050	50 μ g	\$329
Integrin α 11 β 1	Human	Q9UKX5 (Integrin α 11) & P05556 (Integrin β 1)	CHO	6357-AB-050	50 μ g	\$329
	Mouse	P61622 (α 11 subunit) & P09055 (β 1 subunit)	CHO	7808-AB-050	50 μ g	\$329
Integrin α E β 7	Human	P38570 (Integrin α E) & P26010 (Integrin β 7)	CHO	5850-A3-050	50 μ g	\$329
	Mouse NEW	ABD49099 (Integrin α E), P26011 (Integrin β 7)	CHO	8356-A3-050	50 μ g	\$319
Integrin α L β 2	Human	P20701 (Integrin α L) & P05107 (Integrin β 2)	CHO	3868-AV-050	50 μ g	\$329
	Mouse	P24063 (Integrin α L) & P11835 (Integrin β 2)	CHO	7825-AB-050	50 μ g	\$329
Integrin α M β 2	Human	NP_001139280 (Integrin α M) & P05107 (Integrin β 2)	CHO	4047-AM-050	50 μ g	\$329
	Mouse	NP_032427 (Integrin α M) & P11835 (Integrin β 2)	CHO	7959-AM-050	50 μ g	\$329
Integrin α V β 1	Human	NP_002201 (Integrin α V) & P05556 (Integrin β 1)	CHO	6579-AV-025	25 μ g	\$329
	Mouse	P43406 (Integrin α V) & P09055 (Integrin β 1)	CHO	7705-AV-050	50 μ g	\$329
Integrin α V β 3	Human	NP_002201 (Integrin α V) & AAA52589 (Integrin β 3)	CHO	3050-AV-050	50 μ g	\$329
	Mouse	P43406 (Integrin α V) & O54890 (Integrin β 3)	CHO	7889-AV-050	50 μ g	\$329
Integrin α V β 5	Human	P06756 (Integrin α V) & P18084 (Integrin β 5)	CHO	2528-AV-050	50 μ g	\$329
	Mouse	P43406 (Integrin α V) & NP_001139356 (Integrin β 5)	CHO	7706-AV-050	50 μ g	\$329
Integrin α V β 6	Human	NP_002201 (Integrin α V) & P18564 (Integrin β 6)	CHO	3817-AV-050	50 μ g	\$329
	Mouse	P43406 (Integrin α V) & Q9Z0T9 (Integrin β 6)	CHO	7480-AV-050	50 μ g	\$329
Integrin α V β 8	Human	P06756 (Integrin α V) & P26012.1 (Integrin β 8)	CHO	4135-AV-050	50 μ g	\$329
	Mouse	P43406 (Integrin α V) & Q0VBDO (Integrin β 8)	CHO	8314-AV-050	50 μ g	\$319
Integrin α X β 2	Human	P20702 (Integrin α X) & AAA59490 (Integrin β 6)	CHO	5755-AX-050	50 μ g	\$329
	Mouse	Q9QXH4 (Integrin α X) & P11835 (Integrin β 2)	CHO	7987-AX-050	50 μ g	\$329

Antibodies

Antibody	Species	Source	Application(s)	Catalog #	Size	Price
Integrin α V β 3	Human	Mouse IgG ₁	B/N, FC, IHC, IP	MAB3050	100 μ g	\$269
				MAB3050-SP	25 μ g	\$99
	Human	Mouse IgG ₁	FC	FAB3050P	100 Tests	\$309
	Human	Mouse IgG ₁	FC	FAB3050A	100 Tests	\$349
Integrin α V β 5	Human	Mouse IgG ₁	FC	FAB3050G	100 Tests	\$329
				FAB2528P	100 Tests	\$309
	Human	Mouse IgG ₁	B/N, FC, ICC/IF, IP	MAB2528	100 μ g	\$249
				MAB2528-SP	25 μ g	\$99
Human	Mouse IgG ₁	FC	FAB2528A	100 Tests	\$359	
Human	Mouse IgG ₁	FC	FAB2528G	100 Tests	\$329	
Integrin α 2/CD49b	Human	Mouse IgG _{2A}	FC, ICC/IF, IP	BAM1233	100 μ g	\$299
				FAB1233P	100 Tests	\$259
	Human	Mouse IgG _{2A}	FC, ICC/IF, IP	MAB1233	500 μ g	\$339
				MAB1233-SP	25 μ g	\$99
	Human	Rat IgG _{2A}	WB	MAB12331	100 μ g	\$249
				MAB12331-SP	25 μ g	\$99
	Human	Rat IgG _{2A}	FC, ICC/IF	MAB12332	100 μ g	\$249
				MAB12332-SP	25 μ g	\$99
	Mouse	Sheep IgG	FC, ICC/IF, WB	AF1740	100 μ g	\$359
				AF1740-SP	25 μ g	\$99
	Mouse	Sheep IgG	FC, ICC/IF, WB	BAF1740	50 μ g	\$390
	Mouse	Rat IgG _{2B}	FC	FAB1740A	100 Tests	\$239
				FAB1740P	100 Tests	\$219
	Mouse	Rat IgG _{2B}	FC	MAB1740	100 μ g	\$249
MAB1740-SP				25 μ g	\$99	
Integrin α 2b/CD41	Human	Mouse IgG ₁	FC, WB	MAB7616	100 μ g	\$249
				MAB7616-SP	25 μ g	\$99
	Human	Mouse IgG ₁	FC	FAB7616P	100 Tests	\$279
				FAB7616A	100 Tests	\$319
	Mouse	Rat IgG _{2A}	FC, ICC/IF	MAB41181	100 μ g	\$249
				MAB41181-SP	25 μ g	\$99
	Mouse	Rat IgG _{2A}	WB	MAB4118	100 μ g	\$249
MAB4118-SP				25 μ g	\$99	
Mouse	Rat IgG _{2A}	FC	FAB41181P	100 Tests	\$269	
Integrin α 3/CD49c	Human	Mouse IgG ₁	FC, ICC/IF	BAM1345	100 μ g	\$299
				MAB1345	500 μ g	\$339
				MAB1345-SP	25 μ g	\$99
	Human	Mouse IgG ₁	FC	FAB1345A	100 Tests	\$319
	Human	Mouse IgG ₁	FC	FAB1345F	100 Tests	\$229
	Mouse	Goat IgG	FC, WB	AF2787	100 μ g	\$359
				AF2787-SP	25 μ g	\$99
	Mouse	Goat IgG	FC	FAB2787P	100 Tests	\$279
Mouse	Goat IgG	FC	FAB2787A	100 Tests	\$309	
Mouse	Goat IgG	FC	FAB2787G	100 Tests	\$299	

Antibodies *continued*

Antibody	Species	Source	Application(s)	Catalog #	Size	Price
Integrin α 4/CD49d	Human	Mouse IgG ₁	FC, ICC/IF	BAM1354	100 μ g	\$299
	Human	Mouse IgG ₁	B/N	BBA37	200 μ g	\$329
	Human	Mouse IgG ₁	FC	FAB1354A	100 Tests	\$279
	Human	Mouse IgG ₁	FC	FAB1354P	100 Tests	\$229
	Human	Mouse IgG ₁	FC, ICC/IF	MAB1354	500 μ g	\$339
				MAB1354-SP	25 μ g	\$99
	Human	Mouse IgG ₁	FC	FAB1354G	100 Tests	\$239
	Human	Mouse IgG ₁	FC	FAB1354C	100 Tests	\$259
	Mouse	Rat IgG _{2A}	FC	MAB2450	100 μ g	\$249
				MAB2450-SP	25 μ g	\$99
Mouse	Rat IgG _{2A}	FC	FAB2450A	100 Tests	\$279	
Mouse	Rat IgG _{2A}	FC	FAB2450P	100 Tests	\$209	
Integrin α 5/CD49e	Human	Goat IgG	B/N, FC, WB	AF1864	100 μ g	\$359
				AF1864-SP	25 μ g	\$99
	Human	Goat IgG	FC, WB	BAF1864	50 μ g	\$390
	Human	Mouse IgG ₁	FC	FAB1864A	100 Tests	\$269
	Human	Mouse IgG ₁	FC	FAB1864P	100 Tests	\$279
	Human	Mouse IgG ₁	FC, FA, ICC/IF	MAB1864	100 μ g	\$249
				MAB1864-SP	25 μ g	\$99
	Human	Mouse IgG _{2A}	WB	MAB18642	100 μ g	\$249
				MAB18642-SP	25 μ g	\$99
	Mouse	Sheep IgG	FC, WB	AF1754	100 μ g	\$359
AF1754-SP				25 μ g	\$99	
Mouse	Rat IgG _{2B}	FC, ICC/IF, WB	MAB1754	100 μ g	\$249	
			MAB1754-SP	25 μ g	\$99	
Mouse	Rat IgG _{2B}	FC	FAB1754P	100 Tests	\$199	
Integrin α 6/CD49f	Human	Mouse IgG _{2B}	FC, IHC, IP	MAB1350	500 μ g	\$339
				MAB1350-SP	25 μ g	\$99
	Human	Goat IgG	WB	AF1350	100 μ g	\$359
				AF1350-SP	25 μ g	\$99
	Human/Mouse/Bovine	Rat IgG _{2A}	FC	FAB13501A	100 Tests	\$259
	Human/Mouse/Bovine	Rat IgG _{2A}	FC	FAB13501P	100 Tests	\$209
	Human/Mouse/Bovine	Rat IgG _{2A}	B/N, FC, IHC	MAB13501	100 μ g	\$249
MAB13501-SP				25 μ g	\$99	
Human/Mouse/Bovine	Rat IgG _{2A}	FC	FAB13501G	100 Tests	\$259	
Integrin α 7	Mouse	Rat IgG _{2B}	FC	MAB3518	100 μ g	\$249
				MAB3518-SP	25 μ g	\$99
	Mouse	Rat IgG _{2B}	FC	FAB3518A	100 Tests	\$349
	Mouse	Rat IgG _{2B}	FC	FAB3518F	100 Tests	\$249
	Mouse	Rat IgG _{2B}	FC	FAB3518P	100 Tests	\$299
	Mouse	Rat IgG _{2B}	FC	FAB3518N	100 Tests	\$319
Mouse	Rat IgG _{2B}	FC	FAB3518C	100 Tests	\$359	

Antibody	Species	Source	Application(s)	Catalog #	Size	Price
Integrin $\alpha 8$	Human	Mouse IgG _{2B}	FC	FAB6194P	100 Tests	\$309
	Human	Mouse IgG _{2B}	FC	FAB6194A	100 Tests	\$359
	Human	Mouse IgG _{2B}	FC, ICC/IF, WB	MAB6194	100 μ g	\$249
				MAB6194-SP	25 μ g	\$99
	Mouse	Goat IgG	FC, ICC/IF, WB	AF4076	100 μ g	\$359
				AF4076-SP	25 μ g	\$99
Mouse	Goat IgG	FC, ICC/IF, WB	BAF4076	50 μ g	\$390	
Integrin $\alpha 9$	Human	Mouse IgG ₁	WB	MAB4574	100 μ g	\$249
				MAB4574-SP	25 μ g	\$99
	Mouse	Goat IgG	FC, WB	AF3827	100 μ g	\$359
				AF3827-SP	25 μ g	\$99
	Mouse	Goat IgG	FC	FAB3827P	100 Tests	\$299
Integrin $\alpha 11$	Human	Goat IgG	WB	AF4235	100 μ g	\$359
				AF4235-SP	25 μ g	\$99
	Human/Mouse	Rat IgG ₁	WB	MAB4235	100 μ g	\$249
				MAB4235-SP	25 μ g	\$99
	Mouse	Sheep IgG	ICC/IF, WB	AF6498	100 μ g	\$359
AF6498-SP				25 μ g	\$99	
Integrin $\alpha E/CD103$	Mouse	Goat IgG	FC, WB	AF1990	100 μ g	\$359
				AF1990-SP	25 μ g	\$99
	Mouse	Goat IgG	FC, WB	BAF1990	50 μ g	\$390
				Mouse	Rat IgG ₁	WB
	MAB1990-SP	25 μ g	\$99			
	Mouse	Goat IgG	FC	FAB1990A	100 Tests	\$199
	Mouse	Goat IgG	FC	FAB1990P	100 Tests	\$189
Mouse	Goat IgG	FC	FAB1990G	100 Tests	\$199	
Integrin $\alpha L/CD11a$	Human	Mouse IgG ₁	FC, WB	MAB3595	100 μ g	\$249
				MAB3595-SP	25 μ g	\$99
	Human	Mouse IgG ₁	FC	FAB3595F	100 Tests	\$249
	Human	Mouse IgG ₁	FC	FAB3595P	100 Tests	\$279
	Human	Mouse IgG ₁	FC	FAB3595A	100 Tests	\$269
	Human	Mouse IgG _{2A}	FC	FAB35951A	100 Tests	\$269
	Human	Mouse IgG _{2A}	FC	FAB35951C	100 Tests	\$329
	Human	Mouse IgG _{2A}	FC	MAB35951	100 μ g	\$249
MAB35951-SP				25 μ g	\$99	

Antibodies *continued*

Antibody	Species	Source	Application(s)	Catalog #	Size	Price
Integrin α M/CD11b	Human	Mouse IgG ₁	FC, IHC	BAM1699	100 μ g	\$249
	Human	Mouse IgG _{2B}	FC	FAB16991A-025	25 Tests	\$109
				FAB16991A-100	100 Tests	\$239
	Human	Mouse IgG _{2B}	FC	FAB16991P-025	25 Tests	\$99
				FAB16991P-100	100 Tests	\$209
	Human	Mouse IgG ₁	FC, ICC/IF, IHC	MAB1699	500 μ g	\$339
				MAB1699-SP	25 μ g	\$99
	Human	Mouse IgG ₁	WB	MAB16992	500 μ g	\$339
				MAB16992-SP	25 μ g	\$99
	Human	Mouse IgG _{2B}	FC	FAB16991C-025	25 Tests	\$119
				FAB16991C-100	100 Tests	\$259
	Human	Mouse IgG _{2B}	FC	FAB16991G-025	25 Tests	\$109
				FAB16991G-100	100 Tests	\$239
	Human	Mouse IgG ₁	FC	FAB1699A-025	25 Tests	\$109
				FAB1699A-100	100 Tests	\$239
	Human	Mouse IgG ₁	FC	FAB1699P-025	25 Tests	\$99
				FAB1699P-100	100 Tests	\$209
	Human	Mouse IgG ₁	FC	FAB1699G-025	25 Tests	\$109
				FAB1699G-100	100 Tests	\$239
	Human NEW	Mouse IgG _{2B}	FC	FAB16991V-025	25 Tests	\$119
				FAB16991V-100	100 Tests	\$239
	Human NEW	Mouse IgG _{2B}	FC	FAB16991R-025	25 Tests	\$119
				FAB16991R-100	100 Tests	\$239
	Human NEW	Mouse IgG _{2B}	FC	FAB16991T-025	25 Tests	\$129
				FAB16991T-100	100 Tests	\$249
	Human NEW	Mouse IgG _{2B}	FC	FAB16991S-025	25 Tests	\$129
				FAB16991S-100	100 Tests	\$249
	Human NEW	Mouse IgG _{2B}	FC	FAB16991N-025	25 Tests	\$129
				FAB16991N-100	100 Tests	\$249
	Human/Canine	Goat IgG	FC, WB	AF1699	100 μ g	\$359
				AF1699-SP	25 μ g	\$99
	Human/Equine	Mouse IgG _{2B}	FC, ICC/IF	MAB16991	100 μ g	\$249
				MAB16991-SP	25 μ g	\$99
	Mouse	Rat IgG _{2B}	FC, ICC/IF, IHC, IP	BAM1124	250 μ g	\$389
	Mouse	Rat IgG _{2B}	FC	FAB1124A-025	25 Tests	\$109
				FAB1124A-100	100 Tests	\$229
	Mouse	Rat IgG _{2B}	FC	FAB1124F-025	25 Tests	\$89
				FAB1124F-100	100 Tests	\$179
	Mouse	Rat IgG _{2B}	FC	FAB1124P-025	25 Tests	\$99
				FAB1124P-100	100 Tests	\$199
	Mouse	Rat IgG _{2B}	FC, ICC/IF, IHC, IP	MAB1124-100	100 μ g	\$269
				MAB1124-500	500 μ g	\$339
MAB1124-SP				25 μ g	\$99	
Mouse	Rat IgG _{2B}	CD	MLDP5	1 Vial	\$109	
Mouse	Rat IgG _{2B}	FC	FAB1124C-025	25 Tests	\$119	
			FAB1124C-100	100 Tests	\$259	
Mouse	Rat IgG _{2B}	FC	FAB1124N-025	25 Tests	\$109	
			FAB1124N-100	100 Tests	\$229	
Mouse NEW	Rat IgG _{2B}	FC	FAB1124V-025	25 Tests	\$109	
Mouse NEW	Rat IgG _{2B}	FC	FAB1124R-025	25 Tests	\$109	
Mouse NEW	Rat IgG _{2B}	FC	FAB1124T-025	25 Tests	\$119	
Mouse NEW	Rat IgG _{2B}	FC	FAB1124S-025	25 Tests	\$119	

Antibody	Species	Source	Application(s)	Catalog #	Size	Price
Integrin α V/CD51	Human	Goat IgG	FC, ICC/IF, WB	AF1219	100 μ g	\$359
				AF1219-SP	25 μ g	\$99
	Human	Mouse IgG ₁	FC, ICC/IF	FAB1219P	100 Tests	\$279
				MAB1219	500 μ g	\$339
	Human	Mouse IgG ₁	FC, ICC/IF	MAB1219-SP	25 μ g	\$99
				MAB12191	100 μ g	\$249
Human	Mouse IgG ₁	FC, ICC/IF	MAB12191-SP	25 μ g	\$99	
			BAF1219	50 μ g	\$390	
Integrin β 1/CD29	Human	Goat IgG	FC, WB	FAB1219G-025	25 Tests	\$149
				BAF1778	50 μ g	\$390
	Human	Mouse IgG ₁	FC	FAB17781P	100 Tests	\$259
				MAB1778	100 μ g	\$249
	Human	Mouse IgG ₁	FC, ICC/IF, IHC, IP, WB	MAB1778-SP	25 μ g	\$99
				MAB17781	100 μ g	\$269
	Human	Mouse IgG ₁	B/N, FC, ICC/IF, IP	MAB17781-SP	25 μ g	\$99
				MAB17782	100 μ g	\$249
	Human	Mouse IgG ₁	FC, FA, ICC/IF, IP	MAB17782-SP	25 μ g	\$99
				FAB17783A	100 Tests	\$309
	Human	Mouse IgG _{2B}	FC	FAB17783P	100 Tests	\$259
				AF1778	100 μ g	\$359
	Human/Canine	Goat IgG	FC, ICC/IF, WB	AF1778-SP	25 μ g	\$99
				MAB17783	100 μ g	\$249
	Human/Porcine/Equine	Mouse IgG _{2B}	FC, ICC/IF, WB	MAB17783-SP	25 μ g	\$99
				AF2405	100 μ g	\$359
	Mouse	Goat IgG	FC, IHC, WB	AF2405-SP	25 μ g	\$99
				BAF2405	50 μ g	\$390
	Mouse	Rat IgG _{2A}	FC, ICC/IF, IHC, WB	MAB2405	100 μ g	\$249
				MAB2405-SP	25 μ g	\$99
Mouse	Rat IgG _{2A}	FC	FAB2405A	100 Tests	\$299	
			FAB2405F	100 Tests	\$199	
Mouse	Rat IgG _{2A}	FC	FAB2405P-025	25 Tests	\$149	
			FAB2405P-100	100 Tests	\$219	
Mouse	Rat IgG _{2A}	FC	FAB2405C	100 Tests	\$289	
			AF1730	100 μ g	\$359	
Integrin β 2/CD18	Human	Goat IgG	B/N, FC, ICC/IF, WB	AF1730-SP	25 μ g	\$99
				BAF1730	50 μ g	\$390
	Human	Mouse IgG ₁	FC	FAB1730F	100 Tests	\$179
				FAB1730P	100 Tests	\$249
	Human	Mouse IgG ₁	FC, ICC/IF, WB	MAB1730	500 μ g	\$339
				MAB1730-SP	25 μ g	\$99
	Human	Mouse IgG ₁	FC	FAB1730A	100 Tests	\$249
				MAB2618	100 μ g	\$249
	Mouse	Rat IgG _{2A}	WB	MAB2618-SP	25 μ g	\$99
				FAB2618F	100 Tests	\$179
	Mouse	Goat IgG	FC	FAB2618P	100 Tests	\$199
				AF2618	100 μ g	\$359
	Mouse/Canine	Goat IgG	FC, FA, WB	AF2618-SP	25 μ g	\$99

Antibodies *continued*

Antibody	Species	Source	Application(s)	Catalog #	Size	Price
Integrin β 3/CD61	Human	Goat IgG	FC, WB	AF2266	100 μ g	\$359
				AF2266-SP	25 μ g	\$99
	Human	Goat IgG	FC, WB	BAF2266	50 μ g	\$390
	Human	Mouse IgG _{2A}	FC	FAB2266A	100 Tests	\$259
	Human	Mouse IgG _{2A}	FC	FAB2266P	100 Tests	\$249
	Human	Mouse IgG _{2A}	FC, WB	MAB2266	100 μ g	\$249
				MAB2266-SP	25 μ g	\$99
	Mouse NEW	Rat IgG ₁	FC	FAB8557P-025	25 Tests	\$99
Mouse NEW	Rat IgG ₁	FC	FAB8557A-025	25 Tests	\$109	
Mouse NEW	Rat IgG ₁	FC	MAB41182	100 μ g	\$249	
Integrin β 4/CD104	Human	Sheep IgG	FC, ICC/IF, WB	AF4060	100 μ g	\$329
				AF4060-SP	25 μ g	\$99
	Human	Mouse IgG _{2B}	FC, ICC/IF, WB	MAB4060	100 μ g	\$249
				MAB4060-SP	25 μ g	\$99
	Human	Mouse IgG _{2B}	FC	FAB4060A	100 Tests	\$319
	Human	Mouse IgG _{2B}	FC	FAB4060G	100 Tests	\$299
	Mouse	Rat IgG _{2A}	FC, IHC, WB	MAB4054	100 μ g	\$249
				MAB4054-SP	25 μ g	\$99
	Mouse	Goat IgG	WB	AF4054	100 μ g	\$329
				AF4054-SP	25 μ g	\$99
Mouse	Rat IgG _{2A}	FC	FAB4054F	100 Tests	\$219	
Mouse	Rat IgG _{2A}	FC	FAB4054P	100 Tests	\$279	
Mouse	Goat IgG	WB	BAF4054	50 μ g	\$390	
Integrin β 5	Human	Sheep IgG	FC, ICC/IF, WB	BAF3824	50 μ g	\$390
	Human	Sheep IgG	FC, ICC/IF, WB	AF3824	100 μ g	\$359
				AF3824-SP	25 μ g	\$99
	Mouse/Rat	Sheep IgG	FC, IHC, WB	AF8035	100 μ g	\$359
AF8035-SP				25 μ g	\$99	
Integrin β 6	Human	Sheep IgG	FC, ICC/IF, WB	AF4155	100 μ g	\$359
				AF4155-SP	25 μ g	\$99
	Human	Sheep IgG	FC, ICC/IF, WB	BAF4155	50 μ g	\$390
	Human	Mouse IgG _{2B}	FC, ICC/IF	MAB4155	100 μ g	\$249
				MAB4155-SP	25 μ g	\$99
	Human	Mouse IgG _{2B}	FC	FAB4155A	100 Tests	\$349
	Human	Mouse IgG _{2B}	FC	FAB4155P	100 Tests	\$299
	Human	Mouse IgG _{2B}	WB	MAB41551	100 μ g	\$249
				MAB41551-SP	25 μ g	\$99
	Mouse	Goat IgG	ICC/IF, WB	AF2389	100 μ g	\$359
				AF2389-SP	25 μ g	\$99
	Mouse	Goat IgG	ICC/IF, WB	BAF2389	50 μ g	\$390
Mouse	Rat IgG _{2A}	ICC/IF, WB	MAB2389	100 μ g	\$249	
			MAB2389-SP	25 μ g	\$99	

Antibody	Species	Source	Application(s)	Catalog #	Size	Price
Integrin β 7	Human	Sheep IgG	FC, WB	AF4669	100 μ g	\$359
				AF4669-SP	25 μ g	\$99
	Human	Mouse IgG ₁	FC, ICC/IF	MAB4669	100 μ g	\$249
				MAB4669-SP	25 μ g	\$99
	Human	Sheep IgG	WB	BAF4669	50 μ g	\$390
	Human	Mouse IgG ₁	FC	FAB4669F	100 Tests	\$249
	Human	Mouse IgG ₁	FC	FAB4669P	100 Tests	\$309
	Mouse	Goat IgG	FC, WB	AF3060	100 μ g	\$359
				AF3060-SP	25 μ g	\$99
	Mouse	Rat IgG _{2A}	FC	MAB3060	100 μ g	\$249
				MAB3060-SP	25 μ g	\$99
	Mouse	Rat IgG _{2A}	FA	MAB30601	100 μ g	\$249
				MAB30601-SP	25 μ g	\$99
	Mouse	Rat IgG _{2A}	WB	MAB30602	100 μ g	\$249
MAB30602-SP				25 μ g	\$99	
Integrin β 8	Human	Mouse IgG _{2B}	FC	MAB4775	100 μ g	\$249
				MAB4775-SP	25 μ g	\$99
	Human	Mouse IgG _{2B}	FC	FAB4775A	100 Tests	\$359

Antibody Application Key:

B/N - Blocking/Neutralize
CD - Cell Depletion
FC - Flow Cytometry

FA - Functional Assay
ICC/IF - Immunofluorescence
IHC - Immunohistochemistry

IP - Immunoprecipitation
WB - Western Blot

R&D SYSTEMS

 **NOVUS**
BIOLOGICALS

TOCRIS

protein  simple

biotechne[®]

Global info@bio-techne.com bio-techne.com/find-us/distributors TEL +1 612 379 2956
North America TEL 800 343 7475 Europe | Middle East | Africa TEL +44 (0)1235 529449
China info.cn@bio-techne.com TEL +86 (21) 52380373

bio-techne.com

