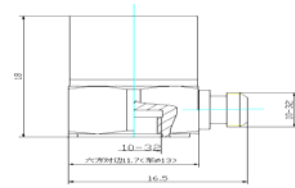


Features:

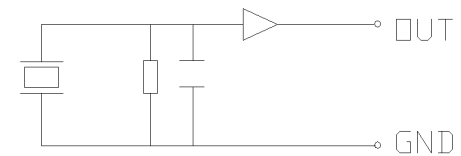
- Built-in IC preamplifier
- Matched with coaxial cable and constant-current adjustor
- Simplify measurement system
- Small scale



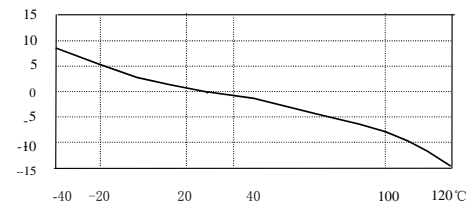
Schematic diagram

Specifications:

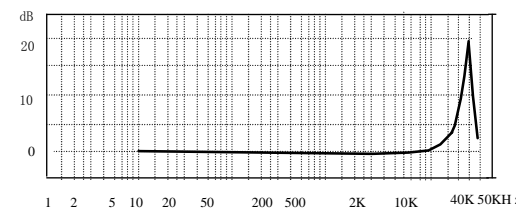
Axial Sensitivity $\pm 5\%$	10mV/g
Measurement Range(peak)	500 g
Transverse Sensitivity	$\leq 5\%$
Frequency Response(0.5dB)	1 to 10,000 Hz
Mounting Resonance Frequency	40,000 Hz
Temperature Response	Refer to the temperature curve
Polarity	Positive
Operating Temp. Range	-40 to +120 °C
Shock Limit	3,000g
Operating Voltage (constant-current source)	+18 to +28 V(DC)
Operating Current	+2 to +10 mA(typical 4 mA)
Output Signal (peak)	$\leq 6V$
Noise(1 to 20kHz)	< 0.5 mg
Base Strain Sensitivity	0.2mg/ $\mu\epsilon$
Magnetic Sensitivity	1.5g/T
Thermal Transient Sensitivity	10mg/°C
Output Impedance	< 100 Ω
DC Offset Voltage	12 \pm 2 VDC/7 \pm 1 VDC/ (inform when making orders)
Weight	12g
Case Material	Stainless steel
Mounting Method	M5
Sensing Element	PZT-5
Structural Design	Loop shear
Output	L5
Accessories:	
Sensor Certificate	Calibration parameter, frequency response curve
M5bolt,Protection cap	one
Double-ended L5(2m)	Optional



Circuit diagram



Temperature Response Curve



Frequency Response Curve