

# Millennium One Step™ Night Seal®

## Description

Millennium One Step™ Night Seal® is a highly elastomeric, solvent free, quick setting, foam sealer. The unique formulation results in a foam that has a weatherproof “skin”. Millennium One Step™ Night Seal® sets in minutes, and is designed for use with our One Step™ application process.

Our contractor preferred One Step™ application process is efficient and always dependable. Application is quick and easy, resulting in significant labor savings for the contractor. No expensive specialty pumps or spray rigs are required.

## Basic Use

Millennium One Step™ Night Seal® is designed for use as a quick and reliable sealer at temporary tie-in locations between new roof covers and existing roof systems. Millennium One Step™ Night Seal® eliminates the need for messy asphalt mastics and bitumens or less reliable porous surface foams.

## Surface Preparation

All work surfaces should be clean, dry, and free of dirt, dust, debris, oils, loose and/or embedded gravel, un-adhered coatings, deteriorated membrane and other contaminants that may result in a surface that is not sound or is uneven.

## Storage

Keep temperature of contents between 65°F-85°F (18°C-29°C) 24 hours prior to use. Do not store in direct sunlight or temperatures higher than 90°F (32°C).

## Color

Black



## Features

Ready to use

No temperature restrictions

One Step™ technology

Solvent free

Elastomeric

Low rise foam

Unique weatherproof “skin”

## Benefits

Requires no mixing, reduces labor costs

Suitable for all climates

Easy to apply

Essentially VOC free, no odors

Remains flexible, absorbs stresses

Accommodates minor surface irregularities

Waterproof tie-ins within minutes

## Safety

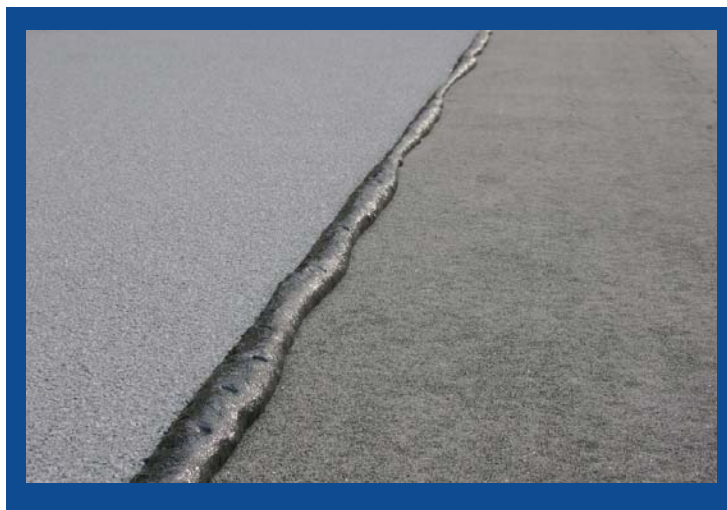
Prior to working with this or any adhesive product consult product label and Safety Data Sheet (SDS) for necessary health and safety precautions.

## Limitations

- Do not apply to wet or damp surfaces.
- Not intended for insulation attachment.
- Not intended as a permanent weatherproofing sealant.

## Application

1. Remove snap off tip from the One Step™ mixing head and keep for re-use.
2. Attach a One Step™ mixing nozzle to the threaded mixing head.
3. Place the cartridge into the appropriate One Step™ applicator. **Caution:** Adhesive should be dispensed immediately after loading the cartridge into the dispensing tool to prevent adhesive from foaming and curing in the mixing tip.
4. Properly prepare existing membrane and/or substrate at temporary tie-in location. The surface to receive Millennium One Step™ Night Seal® must be dry, clean, and free of loose material. All loose gravel must be removed.
5. Apply Millennium One Step™ Night Seal® directly to the prepared substrate. Apply a continuous bead (minimum 3/4" width) approximately 1-1/2" from where the roof covers leading edge will fall. As the sealer is applied immediately place edge of the roof cover into the wet material. Do not allow the material to skin over.
6. Roll the outside edge of the roof cover to ensure positive contact with the substrate and to create a sufficient "bleed out" of sealer. Millennium One Step™ Night Seal® will expand and seal the leading edge of the roof cover.
7. Un-used material can be applied at a later date by simply plugging the cartridges (with provided snap off tip) and using a new One Step™ mixing Nozzle.



## Packaging and Coverage

Millennium One Step™ Night Seal® is available in the following package:

<u>Cartridge Size</u>	<u>Part #</u>	<u>Cartridges/Case</u>
1.5 Liter	OS-NS15-04	4

Covers 300 - 400 lin ft (91m - 122m) per case. Coverage rates are based on an application of one continuous ribbon approximately 3/4" (1.9cm) in width. Coverage rates will vary depending on surface conditions. Extremely irregular surfaces may require the use of a larger bead of material.

## Equipment

The fast and dependable One Step™ applicators make applying Millennium One Step™ Night Seal® simple:

- Battery Powered Single Bead
- Pneumatic Single Bead
- Ultra Drive Manual Applicator
- Heavy Duty Manual Applicator



Code #0025-0514

**WARRANTY:** Royal Adhesives and Sealants warrants its products to conform to Royal's specifications at the time of sale when tested according to Royal standards. If a product is proven to be defective when tested according to Royal standards, Royal will, at its option, refund the purchase price or replace or repair the defective product. THIS LIMITED WARRANTY IS THE BUYER'S SOLE AND EXCLUSIVE REMEDY AGAINST ROYAL ADHESIVES AND SEALANTS AND IS IN LIEU OF ANY AND ALL OTHER WARRANTIES, EXPRESS OR IMPLIED, INCLUDING, BUT NOT LIMITED TO, ANY IMPLIED WARRANTY OF MERCHANTABILITY OR FITNESS FOR A PARTICULAR PURPOSE. In no event shall Royal be liable for any special, incidental, consequential, or punitive damages arising out of any claims whether based on negligence, contract, warranty, strict liability or otherwise.