

# 85 Series Casters

RWM's 85 Series caster features the patented Kingpinless™ design. This is the design that RWM patented, and that has proven itself to be the best solution for demanding applications. This is the caster design that all others are now copying because it is simply unmatched in extending service life, reducing all possible causes for caster failure. The 85 Series offers a capacity up to 10,000 pounds and is available with wheels up to 5" wide for higher capacity ratings. This caster is built to take the punishment experienced in high shock and impact loads. These casters are proudly made in the USA!



85-UIT-1030-S-8SL-PCWB



85-UIR-0830-R

## Features

**Raceway Design:** Patented Kingpinless™ single ball bearing precision machined raceway hardened to 53 Rockwell C minimum. 4-1/4" diameter raceway with 5/8" ball bearings.

**Capacity:** 10,000 lbs

**Leg Thickness:** 3/8", 3" wide for 3" wheels, 4" wide for 4" wheels, 5" wide for 5" wheels.

**Axle:** 3/4" bolt and nut for 3" wide, 1" or 1-1/4" bolt and nut for 4" wide, 1-1/4" bolt and nut for 5" wide.

**Finish:** Laguna Blue paint

**Wheels:** 3" wide wheels are available with either a 1" roller bearing that rotates on a 3/4" x 1" x 3-9/16" hardened and ground spanner bushing or 3/4" tapered bearings that rotate on a 3/4" axle. 4" and 5" wheels are available with either a 1-1/4" I.D. roller bearing which rotates on a hardened and ground spanner bushing or 1-1/4" tapered bearings which rotate on the axle. All wheels are equipped with lubrication fitting.

**Mounting Plate Size:** 6" x 7" x 1/2"

**Bolt Hole Spacing:** 4-5/8" x 5-1/2", slotted to 4-3/8" x 5-5/8"

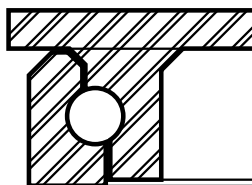
**Mounting Bolt Diameter:** 1/2"

## Applications

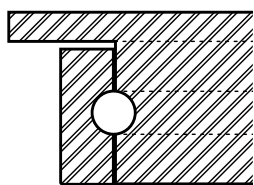
The 85 Series typical applications include dollies, utility carts, tow line and platform trucks. It is also ideal for:

- ◆ tow lines
- ◆ abusive conditions
- ◆ automotive
- ◆ metal fabricating
- ◆ military equipment
- ◆ tractor pulled trailers
- ◆ air cargo & ground support equipment
- ◆ boat & ship molding and building
- ◆ storage tanks & gantries
- ◆ heavy duty processing equipment and countless other heavy duty applications.
- ◆ shock load applications
- ◆ production line dollies
- ◆ aerospace
- ◆ heavy machinery
- ◆ mobile homes
- ◆ extreme duty platform trucks

**RWM's Raceway**



**Competitor's Raceway**



## Options

- CWB** Cam Wheel Brake
- DSL** Demountable Swivel Lock\*
- FG** Foot Guard
- HDSL** Heavy Duty Demountable Swivel Lock
- HT** High Temperature Lubrication
- HTP** High Temperature Paint
- LT** Low Temperature Lubrication
- NY** Notched Yoke
- PCWB** Poly Cam Wheel Brake
- SL** Swivel Lock
- SR** Sealed Swivel Raceway
- ZP** Zinc Plate
- 8SL** 8 Position Swivel Lock

\*When ordering a Demountable Swivel Lock (DSL), you must also order the Notched Yoke (NY).

### OPTIONAL MOUNTING PLATES

Optional Top Plate Number	Mounting Plate	Bolt Hole Spacing	Bolt Size
95ST 95RT	6" x 7-1/2"	4-1/2" x 6" slotted to 4-1/8" x 6-1/8"	1/2"
LLST LLRT	8-1/2" X 11"	7" x 9-3/4"	5/8"
LMST LMRT	8-1/2" X 8-1/2"	7" x 7"	5/8"

## RWM's Patented Offset Raceway - Why It's a Superior Design

Our patented offset precision-machined raceway exerts radial force evenly where there is full contact between the ball bearing and the raceway. RWM's unique design adds more mass at key points. This, plus more thorough heat treatment, provides additional strength and combats brinelling into the core material. The result: No direct "hammering" forces on the intersections of the raceways. Vastly reduced raceway wear. Elimination of the "pull apart" forces of stress in the swivel section. Smoother swiveling action. High maneuverability. Longer service life. Less maintenance. Extra impact resistance. High radial force absorption.

UP TO 10,000 POUND CAPACITY

## SPECIFICATIONS

Wheel Diameter	Wheel Width	Wheel Type	lbs. Capacity	Overall Height	Swivel Caster Model Number			Swivel Lead	lbs. Approx Weight		
					Straight Roller Bearing	Ball Bearing	Tapered Roller Bearing				
6"	2-1/2"	Forged Steel	5000	8-1/2"	85-FSR-0625-S		85-FST-0625-S	2"	23.0		
		GT	2300			85-GTB-0625-S			17.0		
6"	3"	Cast Iron	3000	8-1/2"	85-CIR-0630-S		85-CIT-0630-S	2"	24.0		
		Durastan	2000		85-DUR-0630-S				17.0		
		Forged Steel	7000		85-FSR-0630-S		85-FST-0630-S		28.0		
		Nylatron HD	10000			85-NYB-0630-S			18.0		
		Rubber on Iron	680		85-RIR-0630-S				20.0		
		Rubber on Iron-EHT	1020		85-RIR-0630-S-EHT		85-RIT-0630-S-EHT		20.0		
		Urethane on Iron	2000		85-UIR-0630-S		85-UIT-0630-S		23.0		
		V-Groove Forged	7000		85-VFR-0630-S		85-VFT-0630-S		32.0		
8"	2-1/2"	Forged Steel	4500	10-1/2"	85-FSR-0825-S		85-FST-0825-S	2-1/2"	30.0		
		GT	2400			85-GTB-0825-S			21.0		
		Rubber on Iron	670		85-RIR-0825-S				23.0		
		Rubber on Iron-EHT	1005		85-RIR-0825-S-EHT		85-RIT-0825-S-EHT		23.0		
		V-Groove Iron	3000		85-VIR-0825-S		85-VIT-0825-S	27.0			
8"	3"	Cast Iron	3000	10-1/2"	85-CIR-0830-S		85-CIT-0830-S	2-1/2"	28.0		
		Durastan	2500		85-DUR-0830-S				21.0		
		Forged Steel	5500		85-FSR-0830-S		85-FST-0830-S		32.0		
		Infinity	4000			85-UIB-0830-S-INF			26.0		
		Nylatron HD	10000			85-NYB-0830-S			22.0		
		Omega	1600		85-UOR-0830-S	85-UOB-0830-S	85-UOT-0830-S		26.0		
		Rubber on Iron	840		85-RIR-0830-S				23.0		
		Rubber on Iron-EHT	1260		85-RIR-0830-S-EHT		85-RIT-0830-S-EHT		23.0		
		Urethane on Iron	2500		85-UIR-0830-S		85-UIT-0830-S		26.0		
		V-Groove Forged Steel	6000		85-VFR-0830-S		85-VFT-0830-S		29.0		
		V-Groove Iron	5000		85-VIR-0830-S		85-VIT-0830-S		30.0		
8"	4"	Cast Iron	4000	10-1/2"	85-CIR-0840-S		85-CIT-0840-S	2-1/8"	34.0		
		Forged Steel	10000		85-FSR-0840-S		85-FST-0840-S		36.0		
		Urethane on Iron	3500		85-UIR-0840-S		85-UIT-0840-S		28.0		
		V-Groove Forged Steel	10000		85-VFR-0840-S		85-VFT-0840-S		36.0		
10"	3"	Cast Iron	4000	12-1/2"	85-CIR-1030-S		85-CIT-1030-S	2-9/16"	38.0		
		Durastan	2900		85-DUR-1030-S				25.0		
		Forged Steel	6000		85-FSR-1030-S		85-FST-1030-S		39.0		
		GT	3400			85-GTB-1030-S			25.0		
		Infinity	5000			85-UIB-1030-S-INF			32.0		
		Nylatron HD	10000			85-NYB-1030-S			26.0		
		Omega	2000		85-UOR-1030-S	85-UOB-1030-S	85-UOT-1030-S		32.0		
		Rubber on Aluminum-EHT	2000			85-RAB-1030-S-EHT	85-RAT-1030-S-EHT		26.0		
		Rubber on Iron	1000		85-RIR-1030-S				28.0		
		Rubber on Iron-EHT	1500		85-RIR-1030-S-EHT		85-RIT-1030-S-EHT		28.0		
		Ultra Thick Urethane	3400		85-UTR-1030-S		85-UTT-1030-S		28.0		
		Urethane on Iron	3000		85-UIR-1030-S		85-UIT-1030-S		32.0		
		V-Groove Forged Steel	6000		85-VFR-1030-S		85-VFT-1030-S		39.0		
		V-Groove Iron	5000		85-VIR-1030-S		85-VIT-1030-S		44.0		
10"	4"	Forged Steel	10000	12-1/2"	85-FSR-1040-S		85-FST-1040-S	2-9/16"	44.0		
		Rubber on Iron	1400		85-RIR-1040-S		85-RIT-1040-S		32.0		
		Ultra Thick Urethane	4500		85-UTR-1040-S		85-UTT-1040-S		32.0		
		Urethane on Iron	4200		85-UIR-1040-S		85-UIT-1040-S		27.0		
12"	3"	Cast Iron	5000	15-1/2"	85-CIR-1230-S		85-CIT-1230-S	3-7/8"	41.0		
		Nylatron HD	10000			85-NYB-1230-S			38.0		
		Durastan	3500		85-DUR-1230-S				29.0		
		Rubber on Aluminum-EHT	2280			85-RAB-1230-S-EHT	85-RAT-1230-S-EHT		35.0		
		Rubber on Iron	1140		85-RIR-1230-S		85-RIT-1230-S		38.0		
		Rubber on Iron-EHT	1710		85-RIR-1230-S-EHT		85-RIT-1230-S-EHT		38.0		
		Ultra Thick Urethane	4100		85-UTR-1230-S		85-UTT-1230-S		31.0		
		Urethane on Iron	3400		85-UIR-1230-S		85-UIT-1230-S		42.0		
		V-Groove Iron	6000		85-VIR-1230-S		85-VIT-1230-S		43.0		
12"	4"	Durastan	4000	15-1/2"	85-DUR-1240-S		85-RIT-1240-S	3-5/8"	28.0		
		Rubber on Iron	1600		85-RIR-1240-S		85-UTT-1240-S		29.0		
		Ultra Thick Urethane	5300		85-UTR-1240-S				36.0		
		Urethane on Iron	4800		85-UIR-1240-S		85-UIT-1240-S		29.0		
12"	5"	Rubber on Iron	2050	15-1/2"	85-RIR-1250-S		85-RIT-1250-S	3-5/8"	44.0		
		Ultra Thick Urethane	6500		85-UTR-1250-S		85-UTT-1250-S		45.0		
		Urethane on Iron	6000		85-UIR-1250-S		85-UIT-1250-S		48.0		

UP TO 10,000 POUND CAPACITY

To order a rigid caster, change the "S" to "R" in the model number. For example: "85-CIR-0840-R". To order a rig only, omit the blue letters. For example: "85-0840-S". Dimensions shown are nominal. If precise dimensions are required, consult your RWM representative. For approximate weight of our rigid caster, deduct 3.9 pounds.