



1225 Isley Road, Gastonia, NC 28052
Phone: 800-634-7704 Fax:
800-253-6634
www.rwmcasters.com

Cast Iron Flanged Wheels

FI Wheels

RWM Casters is an industrial wheel manufacturer that offers high quality **cast iron flanged wheels** that are cast with 30,000 psi tensile strength iron offering instant and fluent production flow. These *cast iron flanged wheels* are designed to handle a wide range of temperature variance under high stress situations. These industrial wheels are primarily used when controlling flow, rollability and floor maintenance are big concerns. This cast iron flanged wheel is offered in dual flange or single flanged versions.



FIP-0620-08-S

Features

Wheel Bearing: Choice of roller, tapered or plain

Temperature Range: -40° to +800°F

Finish: Painted

Bores: Special sizes available upon request

Keyways: Can be installed on most sizes

SINGLE FLANGE: "S" after bearing #

DUAL FLANGE: "D" after bearing #

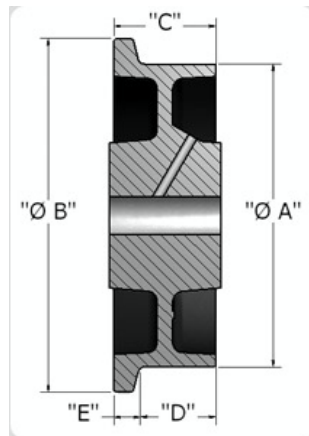
HUB LENGTH: includes spanner & roller bearings installed

options







TG Thread Guard

WS Wheel Seals

CONTACT RWM FOR MORE OPTIONS.



Specifications

					 lbs. Capacity	 Axle Diameter	 Straight Roller Bearing	 Tapered Roller Bearing		 Hub Length	 Approx Weight
4"	5"	2"	1-1/2"	1/2"	1000	1/2"	FIR-0420-08-S	FIT-0420-08-S	FIP-0420-08-S	2-7/16"	8
4"	5"	2"	1-1/2"	1/2"	1000	5/8"	FIR-0420-10-S	FIT-0420-10-S	FIP-0420-10-S	2-7/16"	8
4"	5"	2"	1-1/2"	1/2"	1000	3/4"	FIR-0420-12-S	FIT-0420-12-S	FIP-0420-12-S	2-7/16"	8
4"	5"	2"	1-1/2"	1/2"	1000	1"	FIR-0420-16-S	FIT-0420-16-S		2-7/16"	8
4"	5"	2"	1-1/2"	1/2"	1000	1-1/4"	FIR-0420-20-S	FIT-0420-20-S		2-7/16"	8
5"	6"	2"	1-1/2"	1/2"	1200	1/2"	FIR-0520-08-S	FIT-0520-08-S	FIP-0520-08-S	2-7/16"	8
5"	6"	2"	1-1/2"	1/2"	1200	5/8"	FIR-0520-10-S	FIT-0520-10-S	FIP-0520-10-S	2-7/16"	8
5"	6"	2"	1-1/2"	1/2"	1200	3/4"	FIR-0520-12-S	FIT-0520-12-S	FIP-0520-12-S	2-7/16"	8
5"	6"	2"	1-1/2"	1/2"	1200	1"	FIR-0520-16-S	FIT-0520-16-S		2-7/16"	8
5"	6"	2"	1-1/2"	1/2"	1200	1-1/4"	FIR-0520-20-S	FIT-0520-20-S		2-7/16"	8
6"	7"	2"	1-1/2"	1/2"	1500	1/2"	FIR-0620-08-S	FIT-0620-08-S	FIP-0620-08-S	2-7/16"	9
6"	7"	2"	1-1/2"	1/2"	1500	5/8"	FIR-0620-10-S	FIT-0620-10-S	FIP-0620-10-S	2-7/16"	9
6"	7"	2"	1-1/2"	1/2"	1500	3/4"	FIR-0620-12-S	FIT-0620-12-S	FIP-0620-12-S	2-7/16"	9
6"	7"	2"	1-1/2"	1/2"	1500	1"	FIR-0620-16-S	FIT-0620-16-S		2-7/16"	9
6"	7"	2"	1-1/2"	1/2"	1500	1-1/4"	FIR-0620-20-S	FIT-0620-20-S		2-7/16"	9
8"	9"	2"	1-12"	1/2"	2000	1/2"	FIR-0820-08-S	FIT-0820-08-S	FIP-0820-08-S	2-7/16"	12
8"	9"	2"	1-12"	1/2"	2000	5/8"	FIR-0820-10-S	FIT-0820-10-S	FIP-0820-10-S	2-7/16"	12
8"	9"	2"	1-12"	1/2"	2000	3/4"	FIR-0820-12-S	FIT-0820-12-S	FIP-0820-12-S	2-7/16"	12
8"	9"	2"	1-12"	1/2"	2000	1"	FIR-0820-16-S	FIT-0820-16-S		2-7/16"	12
8"	9"	2"	1-12"	1/2"	2000	1-1/4"	FIR-0820-20-S	FIT-0820-20-S		2-7/16"	12
8"	9"	3"	2-1/2"	1/2"	3000	3/4"	FIR-0830-12-S	FIT-0830-12-S	FIP-0830-12-S	3-9/16"	16
8"	9"	3"	2-1/2"	1/2"	3000	1"	FIR-0830-16-S	FIT-0830-16-S	FIP-0830-16-S	3-9/16"	16
8"	9"	3"	2-1/2"	1/2"	3000	1-1/4"	FIR-0830-20-S	FIT-0830-20-S		3-9/16"	16
8"	9"	3"	2-1/2"	1/2"	3000	1-1/2"	FIR-0830-24-S			3-9/16"	16
12"	14"	3"	2-1/4"	3/4"	5000	3/4"	FIR-1230-12-S	FIT-1230-12-S		3-9/16"	32
12"	14"	3"	2-1/4"	3/4"	5000	1"	FIR-1230-16-S	FIT-1230-16-S		3-9/16"	32
12"	14"	3"	2-1/4"	3/4"	5000	1-1/4"	FIR-1230-20-S	FIT-1230-20-S		3-9/16"	32
12"	14"	3"	2-1/4"	3/4"	5000	1-1/2"	FIR-1230-24-S			3-9/16"	32