



1225 Isley Road, Gastonia, NC 28052
Phone: [800-634-7704](tel:800-634-7704) Fax:
800-253-6634
www.rwmcasters.com

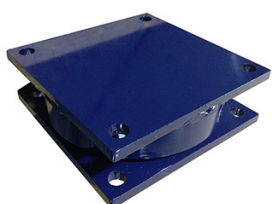
Turntable Swivel Sections



RWM Casters incorporates our Kingpinless™ Caster Swivel Design into Turntable Swivel Sections. This heavy duty turntable is patterned after the popular Kingpinless™ Caster series and is built to take continuous punishment from the toughest industrial applications. They are ideal for work stations, weld tables and material container stands and are proudly Made in the USA.



T48-46RT



T125-LMRT



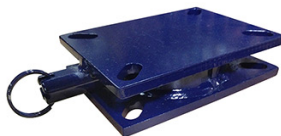
T65-42RT



T75-75RT



T65-46RT



T75-76RT-SL

Features

Raceway Design: Patented Kingpinless™ single ball bearing precision machined raceway hardened to 53 Rockwell C minimum. All swivel sections are supplied with a lubrication fitting for field maintenance. See individual series section for more information.

Mounting: Choose an available mounting plate or specify a desired method. Some options include: stems, center holes, and tapped holes.

Finish: Laguna Blue powder coat. 47, 48 and 65 Series come standard zinc plated

Options

DSL: Demountable Swivel Lock*
HT: High Temperature Lubrication
LT: Low Temperature Lubrication
NY: Notched Yoke
OM: Optional Mounting
SL: Swivel Lock
SR: Sealed Raceway
SS: Stainless Steel (65, 75 only)
ZP: Zinc Plated

HTP: High Temperature Paint

All dimensions are in inches except for capacity, which is in pounds.

Consult the factory for special mounting options and applications, and stainless steel options.

* When adding a Swivel Lock option, the Overall Stack Height will be 3".

** When ordering the Demountable Swivel Lock (DSL), you must also order the Notched Yoke (NY).

Specifications

Swivel Section	Mounting Plate	Overall Stack Height	lbs. Capacity	Maximum Offset at Max Rated Load	Approx Weight	Top Plate Size	Bolt Hole Spacing	Optional Center Hole
47	T47-46RT(47STD)	1-3/16"	900	1-3/16"	2.6	4" x 4-1/2"	2-5/8" x 3-5/8" slotted to 3" x 3"	13/16"
47	T47-41RT	1-3/16"	900	1-3/16"	3.8	4" x 5"	2-5/8" x 3-5/8" slotted to 3" x 4"	13/16"
47	T47-42RT	1-3/16"	900	1-3/16"	4.8	4-1/2" x 6-1/2"	2-7/16" x 4-15/16" slotted to 3-3/8" x 5-1/4"	13/16"
47	T47-43RT	1-3/16"	900	1-3/16"	4.9	5" x 5-1/2"	4-1/8" x 4-1/2"	13/16"
48	T48-46RT(STD)	1-9/16"	1200	1-3/16"	3.4	4" x 4-1/2"	3/8" Dia. (2-5/8" x 3-5/8" slotted to 3" x 3")	13/16"
48	T48-42RT	1-9/16"	1200	1-3/16"	5.1	4-1/2" x 6-1/2"	1/2" Dia. (2-7/16" x 4-15/16" slotted to 3-3/8" x 5-1/4")	13/16"
65	T65-41RT	1-9/16"	1500	1-3/16"	4.3	4" x 5"	2-5/8" x 3-5/8" slotted to 3" x 4"	1"
65	T65-42RT	1-9/16"	1500	1-3/16"	5.3	4-1/2" x 6-1/2"	2-7/16" x 4-15/16" slotted to 3-3/8" x 5-1/4"	1"
65	T65-43RT	1-9/16"	1500	1-3/16"	5.4	5" x 5-1/2"	4-1/8" x 4-1/2"	1"
65	T65-46RT (65STD)	1-9/16"	1500	1-3/16"	3.13	4" x 4 1/2"	2 5/8" x 3 5/8" slotted to 3" x 3"	1"
65	T65-54RT	1-13/16"	1500	1-3/16"	8.13	5-1/4" x 7-1/4"	3-3/8" x 5-1/4" slotted to 4-1/8" x 6-1/8"	1"
65	T65-75RT	1-11/16"	1500	1-3/16"	6.5	4-1/2" x 6-1/2"	2-7/16" x 4-15/16" slotted to 3-3/8" x 5-1/4"	1"
75	T75-75RT	1-11/16"	4500	1-1/2"	7.1	4-1/2" x 6-1/2"	2-7/16" x 4-15/16" slotted to 3-3/8" x 5-1/4"	1-1/2"
75	T75-76RT	1-13/16"	5200		10.7	5-1/4" x 7-1/4"	3 3/8" x 5 1/4" slotted to 4 1/8" x 6 1/8"	1-1/2"
75	T75-90RT	2-1/16"	5200		14.1	6" x 7"	4-5/8" x 5-1/2" slotted to 4-3/8" x 5-5/8"	1-1/2"
75	T75-95RT	2-1/16"	5200		15.4	6" x 7-1/2"	4-1/2" x 6" slotted 4-1/8" x 6-1/8"	1-1/2"
85	T85-90RT (85STD)	2-3/8"	7500	2-1/8"	17.5	6" x 7"	4-5/8" x 5-1/2" slotted to 4-3/8" x 5-5/8"	2"
85	T85-95RT	2-3/8"	7500	2-1/8"	18.7	6" x 7-1/2"	4-1/2" x 6" slotted 4-1/8" x 6-1/8"	2"
85	T85-LLRT	2-3/8"	7500	2-1/8"	41.1	8-1/2" x 11"	7" x 9-3/4"	2"
85	T85-LMRT	2-3/8"	7500	2-1/8"	25.1	8-1/2" x 8-1/2"	7" x 7"	2"
*95	T95-95RT	2-1/2"	10,000	2-1/4"	22.1	6-1/4" x 7-1/2"	4-1/2" x 6" slotted 4-1/8" x 6-1/8"	1"
125	T125-LLRT	2-7/8"	30,000	3-1/2"	52.1	8-1/2" x 11"	7" x 9-3/4"	4"
125	T125-LMRT (125STD)	2-7/8"	30,000	3-1/2"	36.1	8-1/2" x 8-1/2"	7" x 7"	4"

All dimensions are in inches except for capacity, which is in pounds.

Consult the factory for special mounting options and applications, and stainless steel options.

* When adding a Swivel Lock option, the Overall Stack Height will be 3".

** When ordering the Demountable Swivel Lock (DSL), you must also order the Notched Yoke (NY).