



1225 Isley Road, Gastonia, NC
28052
Phone: [800-634-7704](tel:800-634-7704) Fax:
800-253-6634
www.rwmcasters.com

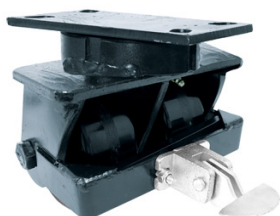
2-75 Series Kingpinless™ Casters

Kingpinless™ Dual Wheel Casters

RWM's 2-75 Series Kingpinless™ Dual Wheel Casters feature all of the benefits of our patented Kingpinless™ raceway and offer twice the capacity load.

Our 2-75 Series Casters are proudly made in the USA! Log in below to download CAD drawings of this caster.

Dual wheel rigid casters top plates utilize a larger surface area on many sizes to accommodate the width of the wheels and leg spacing required. These casters will utilize special top plates combining the adapter plate and mounting plate together in one plasma cut component which look like this ([DOWNLOAD](#)). Dimensions stated as top plate size on these pages are the general outside dimensions of the standard plate when these tabs are not necessary such as on small sizes. Please contact the factory for specifics or if any questions in regards to the items you are looking at.

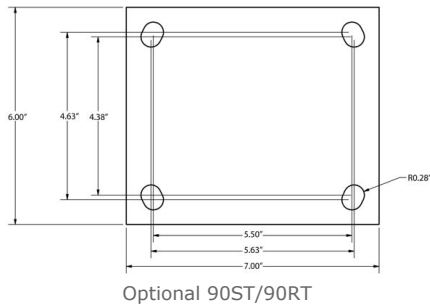
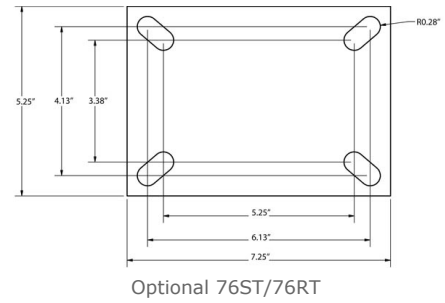
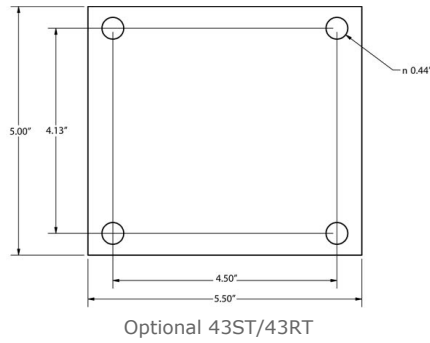
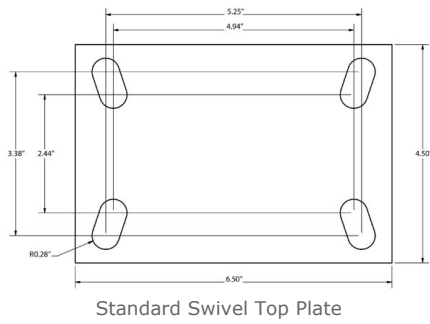


2-75-DUR-0520-S-CWB



2-75-HNR-0620-S

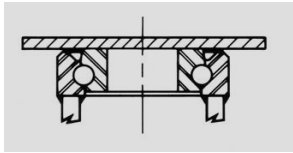
Top Plates



Swivel Sections and Cross Sections

KINGPINLESS™ CASTER SWIVEL SECTION

Raceway Diameter



Features

Raceway Design: Patented Kingpinless™ single ball bearing precision machined raceway hardened to 53 Rockwell C minimum. Swivel section features a 3" diameter raceway with 1/2" ball bearings. The notched yoke is standard.

Capacity: 6,000 lbs.

Axle: 1/2" bolt, locking nut and lubrication fittings

Finish: Laguna Blue powder coat

Wheels: All wheels are 2" wide with 3/4" I.D. roller bearings that are prelubricated and rotate on individual spanner bushings or annular ball bearings for ease of rollability.

Mounting Plate Size: 4-1/2" x 6-1/2" x 5/16"

Bolt Hole Spacing: 2-7/16" x 4-15/16", slotted to 3-3/8" x 5-1/4"

Mounting Bolt Diameter: 1/2"

Leg Thickness: 5/16" formed steel. Center leg support is added for increased strength.

Applications

Dual wheel casters offer high weight capacities with minimal overall heights, better load distribution, floor protection and mobility than single wheel casters. This is a result of spreading the weight over a wider floor area while offering wheel differential action, resulting in less friction between the wheels and the floor, requiring less effort for the caster to swivel. Dual wheel casters are ideal for tow lines, shock load applications and abusive conditions, production line dollies and trucks used in various industries including but not limited to boat and ship molding and building, automotive, aerospace, metal fabricating, metal forging, heavy machinery and equipment, military equipment, mobile homes, etc. tractor pulled trailers, extreme duty platform trucks and material handling carts, air cargo and ground support equipment, storage tanks, gantries and heavy duty processing equipment, coliseum and gymnasium equipment, shipping / receiving carts, warehousing and freight terminal dollies and carts, and other extra heavy duty applications.

Options

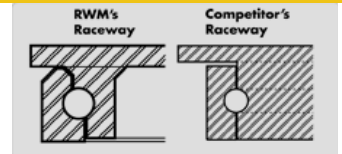
CWB: Cam Wheel Brake
DSL: Demountable Swivel Lock
HT: High Temperature Lubrication
LT: Low Temperature Lubrication
SL: Swivel Lock
SR: Sealed Swivel Raceway
TG: Thread Guard
LSL: L-Type Swivel Lock
VSL: Vertical Swivel Lock
SWP: Sweeper Brush

Benefits of Kingpinless™ Raceway

Our patented offset precision-machined raceway exerts radial force evenly where there is full contact between the ball bearing and the raceway. RWM's unique design adds more mass at key points. This, plus more thorough heat treatment, provides additional strength and combats brinelling into the core material.

The Result:

- No direct "hammering" forces on the intersections of the raceways
- Vastly reduced raceway wear
- Elimination of the "pull apart" forces of stress in the swivel section
- Smoother swiveling action
- High maneuverability
- Longer service life
- Less maintenance
- Extra impact resistance
- High radial force absorption



Optional Mounting Plates

Optional Top Plate Number	Mounting Plate	Bolt Hole Spacing	Bolt Size
90ST***	6" x 7"	4-5/8" x 5-1/2" slotted to 4-3/8" x 5-5/8"	1/2"
90RT	6" x 7"	4-5/8" x 5-1/2" slotted to 4-3/8" x 5-5/8"	1/2"
43ST*	5" x 5-1/2"	4-1/8" x 4-1/2"	3/8"
43RT	5" x 5-1/2"	4-1/8" x 4-1/2"	3/8"
76ST**	5-1/4" x 7-1/4"	3-3/8" x 5-1/4", slotted to 4-1/8" x 6-1/8"	1/2"
76RT	5-1/4" x 7-1/4"	3-3/8" x 5-1/4", slotted to 4-1/8" x 6-1/8"	1/2"

* Subtract 1/16" OAH when using this top plate

** Add 1/16" OAH when using this top plate

*** Add 3/16" OAH when using this top plate

Specifications

Wheel Diameter	Wheel Width	Wheel Type	lbs. Capacity	Overall Height	Straight Roller Bearing	Ball Bearing	Swivel Load	Approx. Weight
5"	2"	Cast Iron	2000	7-1/2"	2-75- CIR -0520-S	2-75- CIB -0520-S	1-7/16"	17
5"	2"	Durastan	2000	7-1/2"	2-75- DUR -0520-S		1-7/16"	11.5
5"	2"	GT	2400	7-1/2"		2-75- GTB -0520-S	1-7/16"	11.5
5"	2"	High Temp Nylon	2000	7-1/2"	2-75- HNR -0520-S		1-7/16"	11.5
5"	2"	Nylatron HD	4000	7-1/2"		2-75- NYB -0520-S	1-7/16"	12
5"	2"	Performance TPR	750	7-1/2"	2-75- RPR -0520-S	2-75- RPB -0520-S	1-7/16"	14

5"	2"	Rubber on Aluminum-EHT	1600	7-1/2"		2-75- RAB -0520-S-EHT	1-7/16"	15.5
5"	2"	Rubber on Iron	800	7-1/2"	2-75- RIR -0520-S		1-7/16"	16.5
5"	2"	Solid Urethane	2000	7-1/2"	2-75- MUR -0520-S	2-75- MUB -0520-S	1-7/16"	12.5
5"	2"	Urethane on Iron	2100	7-1/2"	2-75- UIR -0520-S		1-7/16"	16.5
5"	2"	Urethane on Polypropylene	1500	7-1/2"	2-75- UPR -0520-S	2-75- UPB -0520-S	1-7/16"	14
6"	2"	Cast Iron	2400	8"	2-75- CIR -0620-S	2-75- CIB -0620-S	1-7/16"	18.5
6"	2"	Durastan	2400	8"	2-75- DUR -0620-S	2-75- DUB -0620-S	1-7/16"	12.5
6"	2"	High Temp Nylon	2400	8"	2-75- HNR -0620-S		1-7/16"	12.5
6"	2"	GT	3000	8"		2-75- GTB -0620-S	1-7/16"	12.5
6"	2"	Nylatron HD	4400	8"		2-75- NYB -0620-S	1-7/16"	13.5
6"	2"	Performance TPR	1050	8"	2-75- RPR -0620-S	2-75- RPB -0620-S	1-7/16"	15
6"	2"	Omega	2000	8"	2-75- UOR -0620-S	2-75- UOB -0620-S	1-7/16"	16.5
6"	2"	Rubber on Aluminum-EHT	1640	8"		2-75- RAB -0620-S-EHT	1-7/16"	16.5
6"	2"	Rubber on Iron	820	8"	2-75- RIR -0620-S		1-7/16"	17.5
6"	2"	Solid Urethane	2400	8"	2-75- MUR -0620-S	2-75- MUB -0620-S	1-7/16"	13.5
6"	2"	Urethane on Iron	2460	8"	2-75- UIR -0620-S	2-75- UIB -0620-S	1-7/16"	17.5
6"	2"	Urethane on Polypropylene	1800	8"	2-75- UPR -0620-S	2-75- UPB -0620-S	1-7/16"	15
8"	2"	Cast Iron	2800	10-1/8"	2-75- CIR -0820-S	2-75- CIB -0820-S	2-1/16"	23
8"	2"	Durastan	2800	10-1/8"	2-75- DUR -0820-S	2-75- DUB -0820-S	2-1/16"	15
8"	2"	GT	3600	10-1/8"		2-75- GTB -0820-S	2-1/16"	15
8"	2"	Nylatron HD	6000	10-1/8"		2-75- NYB -0820-S	2-1/16"	16
8"	2"	Omega	2400	10-1/8"	2-75- UOR -0820-S	2-75- UOB -0820-S	2-1/16"	18
8"	2"	Rubber on Aluminum-EHT	2000	10-1/8"		2-75- RAB -0820-S-EHT	2-1/16"	17.5
8"	2"	Rubber on Iron	1000	10-1/8"	2-75- RIR -0820-S		2-1/16"	18.5
8"	2"	Performance TPR	1200	10-1/8"	2-75- RPR -0820-S	2-75- RPB -0820-S	2-1/16"	16
8"	2"	Solid Urethane	3000	10-1/8"	2-75- MUR -0820-S	2-75- MUB -0820-S	2-1/16"	16
8"	2"	Urethane on Iron	3000	10-1/8"	2-75- UIR -0820-S	2-75- UIB -0820-S	2-1/16"	18.5
8"	2"	Urethane on Polypropylene	2000	10-1/8"	2-75- UPR -0820-S	2-75- UPB -0820-S	2-1/16"	16

To order a rigid caster, change the "S" to "R" in the model number. For example: "2-75-CIR-0520-R". To order rig only, omit the blue letters. For example: "2-65-0520-S". Dimensions shown are nominal. If precise dimensions are required, consult your RWM representative. For approximate weight of our rigid casters, deduct 5.4 pounds per item.

- * Subtract 1/16" OAH when using this top plate
- ** Add 1/16" OAH when using this top plate
- *** Add 3/16" OAH when using this top plate