

76 Series Casters

RAPIDSTOCK

RWM's 76 Series caster features the patented Kingpinless™ design. This is the design that RWM patented, and that has proven itself to be the best solution for demanding applications. This is the caster design that all others are now copying because it is simply unmatched in extending service life, reducing all possible causes for caster failure. The 76 Series offers up to 7000 lb. capacity and is available with a wide variety of wheels. All swivel sections are supplied with a lubrication fitting for field maintenance and is case hardened for long service life. It will not crack like through hardened or induction hardened construction provided by other caster manufacturers. Our 76 series industrial casters are proudly made in the USA! Download free 3D CAD drawings and models of this caster on our website.



76-UOT-1030-R



76-UOT-0830-S



Features

Raceway Design: Patented Kingpinless™ single ball bearing precision machined raceway hardened to 53 Rockwell C minimum. Swivel section features 3" diameter raceway with 1/2" ball bearings. The notched raceway is standard.

Capacity: 7000 lbs

Leg Thickness: 3/8"

Axle: 3/4" bolt with lock or slotted nut as required

Finish: Laguna Blue paint

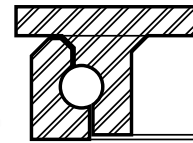
Wheels: Wheels are available with either a 1" roller bearing which rotates on a hardened and ground spanner bushing or 3/4" tapered bearings that rotate on the axle. All wheels are equipped with a lubrication fitting.

Mounting Plate Size: 5-1/4" x 7-1/4" x 3/8"

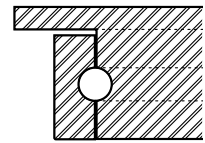
Bolt Hole Spacing: 3-3/8" x 5-1/4", slotted to 4-1/8" x 6-1/8"

Mounting Bolt Diameter: 1/2"

RWM's Raceway



Competitor's Raceway



View
CAD Models
On Our
Website!

Options

- CWB** Cam Wheel Brake
- DSL** Demountable Swivel Lock
- FG** Foot Guard
- FICWB** Field Installable Cam Wheel Brake
- HT** High Temperature Lubrication
- HTP** High Temperature Paint
- LT** Low Temperature Lubrication
- PCWB** Poly Cam Wheel Brake
- SL** Swivel Lock
- SR** Sealed Swivel Raceway
- ZP** Zinc Plated

Applications

The 76 Series typical applications include dollies, utility carts, tow line and platform trucks. It is also ideal for:

- ◆ tow lines
- ◆ abusive conditions
- ◆ automotive
- ◆ metal fabricating
- ◆ military equipment
- ◆ tractor pulled trailers
- ◆ air cargo & ground support equipment
- ◆ boat & ship molding and building
- ◆ storage tanks & gantries
- ◆ heavy duty processing equipment and countless other heavy duty applications.
- ◆ shock load applications
- ◆ production line dollies
- ◆ aerospace
- ◆ heavy machinery
- ◆ mobile homes
- ◆ extreme duty platform trucks

OPTIONAL MOUNTING PLATES

Optional Top Plate Number	Mounting Plate	Bolt Hole Spacing	Bolt Size
90ST* 90RT	6" x 7"	4-5/8" x 5-1/2" slotted to 4-3/8" x 5-5/8"	1/2"
95ST* 95RT	6" x 7-1/2"	4-1/2" x 6" slotted to 4-1/8" x 6-1/8"	1/2"
75ST** 75RT	4-1/2" x 6-1/2"	2-7/16" x 4-15/16" slotted to 3-3/8" x 5-1/4"	1/2"

* Add 1/8" OAH when using this top plate

** Subtract 1/16" OAH when using this top plate



UP TO 7,000 POUND CAPACITY

SPECIFICATIONS

Wheel Diameter	Wheel Width	Wheel Type	lbs. Capacity	Overall Height	Swivel Caster Model Number			Swivel Lead	lbs. Approx Weight
					Straight Roller Bearing	Ball Bearing	Tapered Roller Bearing		
5"	2-1/2"	Cast Iron	2000	7"	76-CIR-0525-S		76-CIT-0525-S	2"	18.0
		Cast Iron	1800		76-CIR-0625-S		76-CIT-0625-S		17.0
6"	2-1/2"	Durastan	1600	8"	76-DUR-0625-S			2-1/4"	11.5
		Forged Steel	5000		76-FSR-0625-S		76-FST-0625-S		20.5
		GT	2300			76-GTB-0625-S			11.5
		Rubber on Iron	670		76-RIR-0625-S				16.5
		Rubber on Iron-EHT	810		76-RIR-0625-S-EHT		76-RIT-0625-S-EHT		16.5
		Urethane on Iron	1620		76-UIR-0625-S		76-UIT-0625-S		16.5
		V-Groove Iron	2500		76-VIR-0625-S		76-VIT-0625-S		16.5
		V-Groove Forged	7000		76-VFR-0630-S		76-VFT-0630-S		30.0
6"	3"	Cast Iron	3000	8"	76-CIR-0630-S		76-CIT-0630-S	2-1/4"	18.5
		Durastan	2000		76-DUR-0630-S				12.5
		Forged Steel	7000		76-FSR-0630-S		76-FST-0630-S		31.0
		Nylatron HD	7000			76-NYB-0630-S			12.5
		Rubber on Iron	680		76-RIR-0630-S				17.5
		Rubber on Iron-EHT	1020		76-RIR-0630-S-EHT		76-RIT-0630-S-EHT		17.5
		Urethane on Iron	2000		76-UIR-0630-S		76-UIT-0630-S		17.5
		V-Groove Forged	7000		76-VFR-0630-S		76-VFT-0630-S		30.0
8"	2-1/2"	Cast Iron	2000	10-1/2"	76-CIR-0825-S		76-CIT-0825-S	2-15/16"	23.0
		Durastan	2000		76-DUR-0825-S				15.0
		Forged Steel	4500		76-FSR-0825-S		76-FST-0825-S		25.5
		GT	2400			76-GTB-0825-S			15.0
		Rubber on Iron	670		76-RIR-0825-S				18.5
		Rubber on Iron-EHT	1005		76-RIR-0825-S-EHT		76-RIT-0825-S-EHT		18.5
		Urethane on Iron	2000		76-UIR-0825-S		76-UIT-0825-S		18.5
		V-Groove Iron	3000		76-VIR-0825-S		76-VIT-0825-S		27.0
8"	3"	Cast Iron	3000	10-1/2"	76-CIR-0830-S		76-CIT-0830-S	2-15/16"	26.0
		Durastan	2500		76-DUR-0830-S				16.5
		Forged Steel	5500		76-FSR-0830-S		76-FST-0830-S		26.0
		Infinity	4000			76-UIB-0830-S-INF			20.0
		Nylatron HD	7000			76-NYB-0830-S			16.0
		Omega	1600		76-UOR-0830-S	76-UOB-0830-S	76-UOT-0830-S		19.0
		Rubber on Iron	840		76-RIR-0830-S				19.5
		Rubber on Iron-EHT	1260		76-RIR-0830-S-EHT		76-RIT-0830-S-EHT		19.5
		Urethane on Iron	2500		76-UIR-0830-S		76-UIT-0830-S		19.5
		V-Groove Iron	5000		76-VIR-0830-S		76-VIT-0830-S		26.0
V-Groove Forged	6000	76-VFR-0830-S		76-VFT-0830-S	36.0				
10"	2-1/2"	Cast Iron	2500	12-1/2"	76-CIR-1025-S		76-CIT-1025-S	3-3/8"	25.5
		Durastan	2500		76-DUR-1025-S				16.5
		Rubber on Iron	790		76-RIR-1025-S				21.5
		Rubber on Iron-EHT	1185		76-RIR-1025-S-EHT		76-RIT-1025-S-EHT		21.5
		Urethane on Iron	2370		76-UIR-1025-S		76-UIT-1025-S		21.5
10"	3"	Cast Iron	4000	12-1/2"	76-CIR-1030-S		76-CIT-1030-S	3-3/8"	23.0
		Durastan	2900		76-DUR-1030-S				20.0
		Forged Steel	6000		76-FSR-1030-S		76-FST-1030-S		41.0
		GT	3400			76-GTB-1030-S			20.0
		Infinity	5000			76-UIB-1030-S-INF			23.0
		Nylatron HD	7000			76-NYB-1030-S			21.0
		Omega	2000		76-UOR-1030-S	76-UOB-1030-S	76-UOT-1030-S		22.0
		Rubber on Aluminum-EHT	1500			76-RAB-1030-S-EHT	76-RAT-1030-S-EHT		20.3
		Rubber on Iron	1000		76-RIR-1030-S				22.5
		Rubber on Iron-EHT	1500		76-RIR-1030-S-EHT		76-RIT-1030-S-EHT		22.5
		Urethane on Iron	3000		76-UIR-1030-S		76-UIT-1030-S		22.5
		Ultra Thick Urethane	3400		76-UTR-1030-S		76-UTT-1030-S		26.0
		V-Groove Forged	6000		76-VFR-1030-S		76-VFT-1030-S		48.0
V-Groove Iron	5000	76-VIR-1030-S		76-VIT-1030-S	23.0				
12"	2-1/2"	Durastan	3000	15-1/2"	76-DUR-1225-S		76-RIT-1225-S	4-5/16"	20.5
		Rubber on Iron	900		76-RIR-1225-S				23.5
		Urethane on Iron	2700		76-UIR-1225-S				23.5
12"	3"	Cast Iron	5000	15-1/2"	76-CIR-1230-S		76-CIT-1230-S	4-5/16"	32.0
		Nylatron HD	7000			76-NYB-1230-S			26.0
		Durastan	3500		76-DUR-1230-S				22.5
		Rubber on Aluminum-EHT	1710			76-RAB-1230-S-EHT	76-RAT-1230-S-EHT		24.5
		Rubber on Iron	1140		76-RIR-1230-S		76-RIT-1230-S		26.5
		Rubber on Iron-EHT	1710		76-RIR-1230-S-EHT		76-RIT-1230-S-EHT		26.5
		Urethane on Iron	3400		76-UIR-1230-S		76-UIT-1230-S		26.5
		Ultra Thick Urethane	4100		76-UTR-1230-S		76-UTT-1230-S		29.0
V-Groove Iron	6000	76-VIR-1230-S		76-VIT-1230-S	43.0				

UP TO 7,000 POUND CAPACITY

To order a rigid caster, change the "S" to "R" in the model number. For example: "76-CIR-1230-R". To order a rig only, omit the blue letters. For example: "76-1230-S". Dimensions shown are nominal. If precise dimensions are required, consult your RWM representative. For approximate weight of our rigid casters, deduct 3.9 pounds.