

This light duty air cargo caster has been optimally designed for air cargo and light duty conveyor applications. It features a heat-treated, hardened raceway for added durability and offers a 300 pound capacity. The light weight phenolic and nylon wheels offer high impact resistance, ease of rollability and resistance to moisture and chemicals. This caster includes a dust cap and thread guards.



26-DUB-0312-S-TG-LD



26-NYB-0312-S-TG-LD

Features

- Raceway Design:** Hardened
- Dust Shield, Water Guard & Thread Guard:** Prevents wheel and swivel assembly from becoming contaminated
- Capacity:** True 300 lbs.
- Finish:**
 - DUB = Zinc plated to protect against corrosion
 - NYB = Type II Gold zinc plated to protect against corrosion

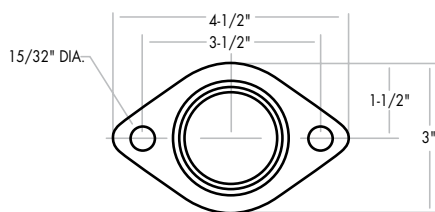
Applications

- Ideal for:
- * airline and aerospace industry
 - * light duty cargo handling
 - * textile industry
 - * conveyor applications
 - * freight handling
 - * cargo conveyor equipment

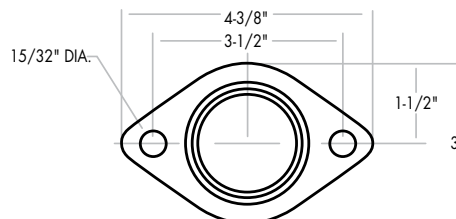
SPECIFICATIONS

Wheel Diameter	Wheel Width	Wheel Type	DBL	Axle Diameter	Capacity lbs.	Overall Height	Ball Bearing	Swivel Lead	Approx Weight lbs.
3"	1-1/4"	Phenolic	1-5/8"	5/16"	300	4"	26-DUB-0312-S-TG-LD	1"	1.0
3"	1-1/4"	Nylon	1-5/8"	3/8"	300	4"	26-NYB-0312-S-TG-LD	1-1/4"	1.38

Standard Top Plate for 26-DUB-0312-S-TG-LD



Standard Top Plate for 26-NYB-0312-S-TG-LD



UP TO 300 POUND CAPACITY