

The VersaTrac 27[®] Series casters provide solutions to a wide range of institutional and industrial applications. This caster is available in multiple styles and sizes. The VersaTrac 27[®] Series is offered in numerous top plates and stem choices and is available with nine standard wheel combinations. This is a durable and reliable caster. It includes extra thick material in the top plate, yoke and raceways. The VersaTrac 27[®] is heat treated for extended service life and comes standard with a metal dust shield. This series provides the ultimate in value at very competitive prices.

Features

Swivel Section: Two complete 2.75 mm shielded heat treated raceways, which prevents brinelling, provides improved swivel action and extends service life.

Kingpin: 1/2" diameter kingpin for increased swivel strength

Axle: 3/8" diameter with lock nut

Finish: Zinc plated to protect against corrosion

Wheels: A wide variety of 3" through 5" diameter available with either roller, ball, celcon, oilite or plain bearings

Mounting Plate Size:

Swivel: 3.5 mm x 2-5/8" x 3-3/4"

Rigid: 2.75 mm x 2-5/8" x 3-3/4"

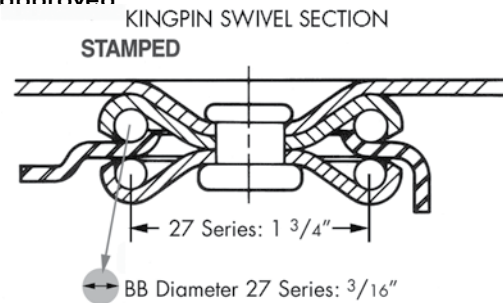
Bolt Hole Spacing: 1-3/4" x 2-7/8"

Mounting Bolt Diameter: 5/16"

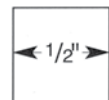
Applications

The VersaTrac 27[®] Series Caster is very popular, and accounts for nearly half of all institutional casters in use today. These casters are used extensively in general industry, medical equipment, laboratory, residential, hotel, industrial and manufacturing applications.

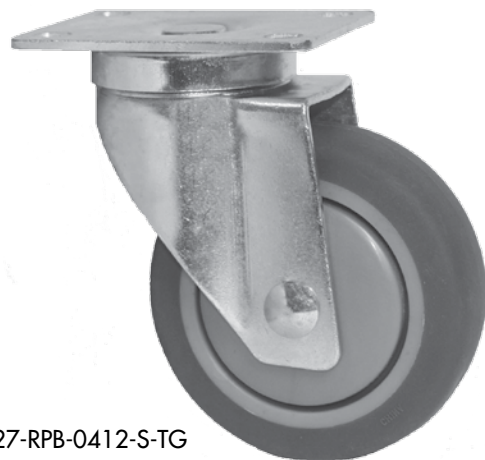
The VersaTrac 27[®] Series Casters are ideal for use in food service and food processing equipment, carts, dollies, bins, cases, racks, tables, commercial appliances, retail fixtures, display stands, business machines and equipment. Most VersaTrac 27[®] Series Casters are NSF approved



RIVET CROSS SECTION



27 Series
31 Series



27-RPB-0412-S-TG



27-RPR-0412-S



27-RPR-0412-R

Options

- ICWB** Field Installable Face Contact Brake*
- SS** Stainless Steel
- TG** Thread Guard
- TLB** Total Lock Brake*
- WB** Side Wheel Brake*

*Brakes available for swivel casters only



Available NSF Products:

All casters except those with thread guards, cast iron, elastic rubber or soft rubber wheels. Add "-N" to the end of the model number to specify an NSF approved caster. For example: 27-HNP-0312-S-N.

OPTIONAL MOUNTING PLATES

| Optional Top Plate Number | Mounting Plate | Bolt Hole Spacing |
|---------------------------|-----------------|---|
| ST1 | 3-1/8" x 4-1/8" | 1-3/4" x 2-7/8" slotted to 2-3/8" x 3-7/16" |
| ST2 | 4" x 4-1/2" | 2-5/8" x 3-5/8" slotted to 3" x 3" |

UP TO 300 POUND CAPACITY

SPECIFICATIONS

| Wheel Diameter | Wheel Width | Wheel Type | lbs. Capacity | Overall Height | Swivel Caster Model Number | | | Swivel Lead | lbs. Approx Weight |
|----------------|-------------|------------------|---------------|----------------|----------------------------|---------------|-------------------------------|-------------|--------------------|
| | | | | | Straight Roller Bearing | Ball Bearing | Plain, Oilite, Celcon Bearing | | |
| 3" | 1-1/4" | Cast Iron | 300 | 4-1/4" | | | 27-CIP-0312-S | 1-1/4" | 2.8 |
| | | Hard Rubber | 250 | | | | 27-HRO-0312-S | | 1.8 |
| | | High-Temp. Nylon | 300 | | | | 27-HNP-0312-S | | 1.7 |
| | | Performance TPR | 190 | | | 27-RPB-0312-S | 27-RPC-0312-S | | 1.7 |
| | | Phenolic | 250 | | | 27-DUB-0312-S | 27-DUC-0312-S | | 1.7 |
| | | Polyolefin | 250 | | | 27-POB-0312-S | 27-POP-0312-S | | 1.5 |
| | | Soft Rubber | 150 | | | | 27-SRO-0312-S | | 1.8 |
| | | Urethane | | | | 27-UPB-0312-S | 27-UPC-0312-S | | 1.8 |
| | | Polypropylene | 225 | | | | | | |
| 3-1/2" | 1-1/4" | Hard Rubber | 250 | 4-3/4" | | | 27-HRO-3512-S | 1-5/16" | 2.0 |
| | | Performance TPR | 200 | | | 27-RPB-3512-R | 27-RPC-3512-S | | 1.9 |
| | | Phenolic | 275 | | | 27-DUB-3512-S | 27-DUC-3512-S | | 1.9 |
| | | Polyolefin | 275 | | | 27-POB-3512-S | 27-POP-3512-S | | 1.7 |
| | | Signature | 225 | | | 27-SWB-3512-S | | | 1.9 |
| | | Soft Rubber | 150 | | | | 27-SRO-3512-S | | 2.0 |
| | | Urethane | 250 | | | 27-UPB-3512-S | 27-UPC-3512-S | | 2.0 |
| | | Polypropylene | | | | | | | |
| 4" | 1-1/4" | Cast Iron | 300 | 5-1/4" | 27-EPR-0412-S | | 27-CIP-0412-S | 1-5/16" | 3.3 |
| | | Elastic Rubber | 250 | | | | | | 2.0 |
| | | Hard Rubber | 260 | | | | 27-HRO-0412-S | | 2.2 |
| | | High-Temp. Nylon | 300 | | | | 27-HNP-0412-S | | 1.8 |
| | | Performance TPR | 275 | | | 27-RPB-0412-S | 27-RPC-0412-S | | 1.9 |
| | | Phenolic | 300 | | | 27-DUB-0412-S | 27-DUC-0412-S | | 2.1 |
| | | Polyolefin | 300 | | | 27-POB-0412-S | 27-POP-0412-S | | 1.6 |
| | | Signature | 250 | | | 27-SWB-0412-S | | | 2.0 |
| | | Soft Rubber | 180 | | | | 27-SRO-0412-S | | 2.2 |
| | | Urethane | 275 | | | 27-UPB-0412-S | 27-UPC-0412-S | | 2.0 |
| Polypropylene | | | | | | | | | |

To order a rigid caster, change the "S" to "R" in the model number. For example, 27-UPB-0512-R. To order the rig only, omit the blue letters, for example 27-0512-S. Note: (1.) For weight of Total Lock Caster add .24 pounds. (2.) For weight of Rigid Caster deduct .7 pounds. (3.) Total Lock Wheel Brake should not be used on hard wheels. For best performance, use only on soft wheel material. Dimensions shown are nominal. If precise dimensions are required, please consult the factory. **Many stems and hollow kingpin sizes are available. Contact factory for more information.**



For our 27 Series

Interchangeable Stem Casters

RWM also stocks hard to find and unusual Interchangeable Stems for our 27 Series Casters. Choose from our 7/8" x 2" square stem with holes, 7/16" x 1 1/2" threaded stem, 5/8"-11 x 1 3/4" threaded stem or our 3/4"-10 x 1 3/4" threaded stem. Ask for our 27 Series hollow kingpin rig and bolt on the stem you need!



| MODEL | DESCRIPTION |
|----------------------|--|
| BOLT ON STEMS | |
| 116 Stem | 7/8" x 2" Square Stem with holes |
| 117 Stem | 7/16" x 1 1/2" Threaded Stem |
| 118 Stem | 5/8"-11 x 1 3/4" Threaded Stem |
| 119 Stem | 3/4"-10 x 1 3/4" Threaded Stem |
| 128 Stem | 5/8" x 2-3/16" Grip Rings |
| 129 Stem | 13/16" x 2-3/16" Grip Rings |
| RIGS | |
| 27-0312-S-HKP-1/2" | 27 Series 3" x 1 1/4" with hollow kingpin 1/2" |
| 27-0412-S-HKP-1/2" | 27 Series 4" x 1 1/4" with hollow kingpin 1/2" |
| 27-0512-S-HKP-1/2" | 27 Series 5" x 1 1/4" with hollow kingpin 1/2" |
| 10007030XX | Nut to assemble |

UP TO 300 POUND CAPACITY