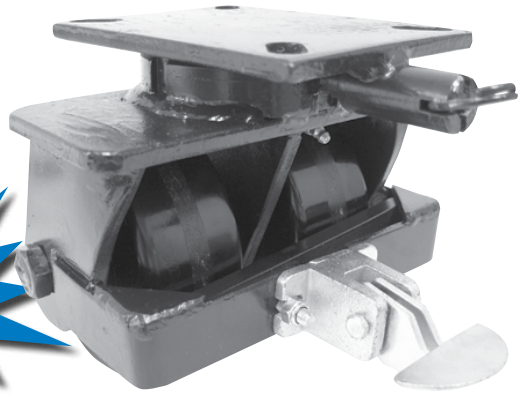


2-76 Series Casters

RWM's 2-76 Series Kingpinless™ Dual Wheel Casters feature all of the benefits of our patented Kingpinless™ raceway and twice the capacity load. Our 2-76 Series Casters are proudly made in the USA!



2-76-DUR-0625-S-SL-CWB

Features

Raceway Design: Patented Kingpinless™ single ball bearing precision machined raceway hardened to 53 Rockwell C minimum. Swivel section features a 3" diameter raceway with 1/2" ball bearings. Notched yoke is standard.

Axle: 3/4" bolt with locking or slotted nut as required

Finish: Laguna Blue paint

Wheels: Wheels are available with either 1" roller bearings which rotate on hardened and ground spanner bushings or 3/4" tapered bearings that rotate on the axle. All wheels are equipped with a lubrication fitting.

Mounting Plate Size: 5-1/4" x 7-1/4" x 3/8"

Bolt Hole Spacing: 3-3/8" x 5-1/4", slotted to 4-1/8" x 6-1/8"

Mounting Bolt Diameter: 1/2"

Leg Thickness: 3/8"

Capacity: 7000 lbs.

View
CAD Models
On Our
Website!

Options

- CWB** Cam Wheel Brake
- DSL** Demountable Swivel Lock
- FG** Foot Guard
- HT** High Temperature Lubrication
- HTP** High Temperature Paint
- LT** Low Temperature Lubrication
- SL** Swivel Lock
- SR** Sealed Swivel Raceway
- ZP** Zinc Plated

Applications

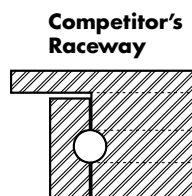
Dual wheel casters offer high weight capacities with minimal overall heights, better load distribution, floor protection and mobility than single wheel casters. This is a result of spreading the weight over a wider floor area while offering wheel differential action, resulting in less friction between the wheels and the floor, requiring less effort for the caster to swivel. Dual wheel casters are ideal for:

- ◆ tow lines
- ◆ abusive conditions
- ◆ automotive
- ◆ metal fabricating
- ◆ military equipment
- ◆ tractor pulled trailers
- ◆ air cargo & ground support equipment
- ◆ boat & ship molding and building
- ◆ storage tanks & gantries
- ◆ heavy duty processing equipment
- ◆ shock load applications
- ◆ production line dollies
- ◆ aerospace
- ◆ heavy machinery
- ◆ mobile homes
- ◆ extreme duty platform trucks

The Majority of Competitor's Raceways

The inline positioning of the competition's raceway (as opposed to the offset positioning utilized by RWM) creates a direct "hammering" effect via the ball bearings which are centered on the tangent of the two raceways, thus savaging and eventually eroding the raceway. The inevitable result is a loose fit and progressive swivel failure. Even a double raceway configuration is subject to these same "hammering" hazards.

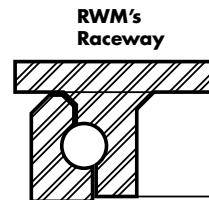
The machining requirements of the competition to accommodate a swivel lock reduces strength, leading to premature fatigue, stress fractures of the raceway and eventual failure.



RWM's Patented Offset Raceway – Why It's a Superior Design

Our patented offset precision-machined raceway exerts radial force evenly where there is full contact between the ball bearing and the raceway. RWM's unique design adds more mass at key points. This, plus more thorough heat treatment, provides additional strength and combats brinelling into the core material. The result:

- ◆ No direct "hammering" forces on the intersections of the raceways
- ◆ Vastly reduced raceway wear
- ◆ Elimination of the "pull apart" forces of stress in the swivel section
- ◆ Smoother swiveling action
- ◆ High maneuverability
- ◆ Longer service life
- ◆ Less maintenance
- ◆ Extra impact resistance
- ◆ High radial force absorption



OPTIONAL MOUNTING PLATES

Optional Top Plate Number	Mounting Plate	Bolt Hole Spacing	Bolt Size
90ST* 90RT	6" x 7"	4-5/8" x 5-1/2" slotted to 4-3/8" x 5-5/8"	1/2"
95ST* 95RT	6" x 7-1/2"	4-1/2" x 6" slotted to 4-1/8" x 6-1/8"	1/2"
75ST** 75RT**	4-1/2" x 6-1/2"	2-7/16" x 4-15/16" slotted to 3-3/8" x 5-1/4"	1/2"

* Add 1/8" to caster overall height when using this top plate.

** Deduct 1/16" from caster overall height when using this top plate.

UP TO 7,000 POUND CAPACITY

SPECIFICATIONS

Wheel Diameter	Wheel Width	Wheel Type	lbs. Capacity	Overall Height	Swivel Caster Model Number			Swivel Lead	Approx Weight
					Straight Roller Bearing	Ball Bearing	Tapered Roller Bearing		
6"	2-1/2"	Cast Iron	3600	8-1/16"	2-76-CIR-0625-S	2-76- GTB -0625-S	2-76-CIT-0625-S	37.0	
		Durastan	3200		2-76-DUR-0625-S		21.7		
		GT	4600				21.0		
		Rubber on Iron	1080		2-76-RIR-0625-S			36.5	
		Rubber on Iron-EHT	2160		2-76-RIR-0625-S-EHT		2-76-RIT-0625-S-EHT	36.5	
		Urethane on Iron	3240		2-76- UIR -0625-S		2-76- UIT -0625-S	39.5	
6"	3"	Cast Iron	6000	8-1/16"	2-76-CIR-0630-S	2-76- NYB -0630-S	2-76-CIT-0630-S	39.0	
		Durastan	4000		2-76-DUR-0630-S		24.0		
		Nylatron HD	5200				22.0		
		Rubber on Iron	1360		2-76-RIR-0630-S			33.0	
		Rubber on Iron-EHT	2720		2-75-RIR-0630-S-EHT		2-76-RIT-0630-S-EHT	33.0	
		Urethane on Iron	4000		2-76- UIR -0630-S		2-76- UIT -0630-S	33.0	
		Solid Urethane	4000				2-76- MUB -0630-S	24.0	
8"	2-1/2"	Cast Iron	4000	10-1/2"	2-76-CIR-0825-S	2-76- GTB -0825-S	2-76-CIT-0825-S	52.0	
		Durastan	4000		2-76-DUR-0825-S		29.0		
		GT	4800				28.0		
		Rubber on Iron	1340		2-76-RIR-0825-S			41.5	
		Rubber on Iron-EHT	2680		2-76-RIR-0825-S-EHT		2-76-RIT-0825-S-EHT	41.5	
		Urethane on Iron	3600		2-76- UIR -0825-S		2-76- UIT -0825-S	48.5	
8"	3"	Cast Iron	6000	10-1/2"	2-76-CIR-0830-S	2-76- NYB -0830-S	2-76-CIT-0830-S	49.0	
		Durastan	5000		2-76-DUR-0830-S		28.0		
		Nylatron HD	7000				29.0		
		Rubber on Iron	1680		2-76-RIR-0830-S			52.0	
		Rubber on Iron-EHT	3360		2-76-RIR-0830-S-EHT		2-76-RIT-0830-S-EHT	52.0	
		Solid Urethane	5000				2-76- MUB -0830-S	28.0	
		Urethane on Iron	5000		2-76- UIR -0830-S		2-76- UIT -0830-S	52.0	
10"	2-1/2"	Cast Iron	5000	12-1/2"	2-76-CIR-1025-S		2-76-CIT-1025-S	63.5	
		Durastan	5000		2-76-DUR-1025-S		30.5		
		Rubber on Iron	1580		2-76-RIR-1025-S		2-76-RIT-1025-S	47.5	
		Rubber on Iron-EHT	3460		2-76-RIR-1025-S-EHT		2-76-RIT-1025-S-EHT	47.5	
		Urethane on Iron	4740		2-76- UIR -1025-S		2-76- UIT -1025-S	58.5	
10"	3"	Durastan	5800	12-1/2"	2-76-DUR-1030-S	2-76- GTB -1030-S		31.0	
		GT	6800				2-76- RAB -1030-S-EHT	2-76-RAT-1030-S-EHT	61.0
		Rubber on Aluminum-EHT	4000					2-76-RIT-1030-S	61.0
		Rubber on Iron	2000		2-76-RIR-1030-S			2-76-RIT-1030-S-EHT	61.0
		Rubber on Iron-EHT	4000		2-76-RIR-1030-S-EHT				61.0
		Solid Urethane	6000				2-76- MUB -1030-S		31.0
		Ultra Thick Urethane	6800		2-76- UTR -1030-S		2-76- UTT -1030-S	64.0	
		Urethane on Iron	6000		2-76- UIR -1030-S		2-76- UIT -1030-S	61.0	
12"	2-1/2"	Durastan	6000	15-1/2"	2-76-DUR-1225-S			44.5	
		Rubber on Iron	1800		2-76-RIR-1225-S		2-76-RIT-1225-S	55.5	
		Urethane on Iron	5400		2-76- UIR -1225-S		2-76- UIT -1225-S	76.2	
12"	3"	Cast Iron	7000	15-1/2"	2-76-CIR-1230-S	2-76- RAB -1230-S-EHT	2-76-CIT-1230-S	88.0	
		Durastan	7000		2-76-DUR-1230-S			34.0	
		Rubber on Aluminum-EHT	4560				2-76-RAT-1230-S-EHT	88.0	
		Rubber on Iron	2280		2-76-RIR-1230-S		2-76-RIT-1230-S	88.0	
		Rubber on Iron-EHT	4560		2-76-RIR-1230-S-EHT		2-76-RIT-1230-S-EHT	88.0	
		Ultra Thick Urethane	7000		2-76- UTR -1230-S		2-76- UTT -1230-S	101.0	
		Urethane on Iron	6800		2-76- UIR -1230-S		2-76- UIT -1230-S	88.0	

UP TO 7,000 POUND CAPACITY

To order a rigid caster, change the "S" to "R" in the model number. For example: "2-76-CIR-0630-R". To order rig only, omit the blue letters. For example: "2-76-0630-S". Dimensions shown are nominal. If precise dimensions are required, consult your RWM representative. For approximate weight of our rigid casters, deduct 5.4 pounds per item.

Dual wheel rigid casters utilize a plasma cut top plate with incorporated tabs for various wheel widths depending on the size and model ordered. Top plate dimensions given on page 80 are a general guideline when these tabs aren't necessary. For specifics on the dimensions of the top plate on your caster, please contact the factory at 1-800-634-7704.