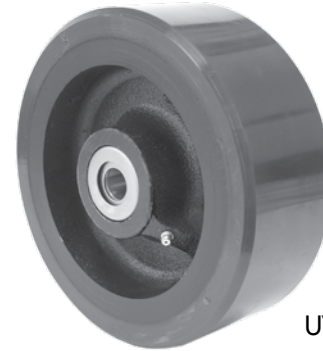


Whisper Wheels HD Urethane on Iron

RAPIDSTOCK

The Whisper Wheel is a unique design in which one inch of urethane is molded to a specially machined cast iron core. The core is uniquely machined and the urethane is then mechanically and chemically bonded to the core. This unique design provides you with a wheel that is longer wearing than standard urethane wheel designs, resists lateral delamination of the tread and reduces noise and provides a quiet ride. Our Premium **PTMEG** urethane provides longer service life, better wear and tear characteristics and rejects floor debris.



UWT-0830-12

Features

Wheel Bearing: Choice of straight roller bearing, tapered or ball bearings

Temperature Range: -40°F to 180°F

Hardness: 92 Durometer Shore A

Bores: Sizes can be altered

Keyways: Can be installed on most sizes

Options

70D Optional Durometer

80A Optional Durometer

90A Optional Durometer

TG Thread Guard on 2" wheels

WS Wheel Seals

ZF Zerk Fittings

There's no need to add an option for microbial resistance; through the use of superior polyurethane, RWM wheels are equipped to resist buildup from the factory.

Applications

- ◆ automotive plants and towline applications
- ◆ applications needing lower noise levels, improved floor protection and where heavy loads and continuous use cause standard poly wheels to heat up and degrade

SPECIFICATIONS

Wheel Diameter	Wheel Width	Urethane Thickness	Capacity		Axle Diameter	Straight Roller Bearing	Ball Bearing	Tapered Roller Bearing	Hub Length	Approx. Weight
			92A	90A						
8"	2"	1"	1500	1500	1/2"	UWR-0820-08	UWB-0820-08	UWT-0820-08	2-7/16"	10
					5/8"	UWR-0820-10				
					3/4"	UWR-0820-12				
8"	3"	3/4"	3000	3000	3/4"	UWR-0830-12	UWB-0830-12	UWT-0830-12	3-1/2"	20
					1"	UWR-0830-16		UWT-0830-16		
					1"	UWR-0830-16-SI				
					1-1/4"	UWR-0830-20				
10"	3"	1"	3410	3410	3/4"	UWR-1030-12	UWB-1030-12	UWT-1030-12	3-1/2"	23
					1"	UWR-1030-16		UWT-1030-16		
					1"	UWR-1030-16-SI				
					1-1/4"	UWR-1030-20		UWT-1030-20		
12"	3"	1"	4100	4100	3/4"	UWR-1230-12	UWB-1230-12	UWT-1230-12	3-1/2"	31
					1"	UWR-1230-16	UWB-1230-16	UWT-1230-16		
					1"	UWR-1230-16-SI				
					1-1/4"	UWR-1230-20		UWT-1230-20		

SI: Spanner Included

UP TO 4,100 POUND CAPACITY