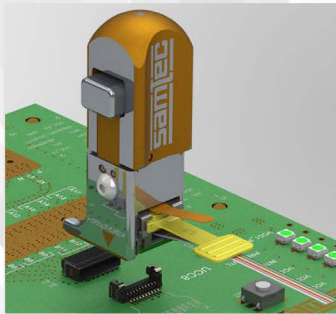


FIREFLY™

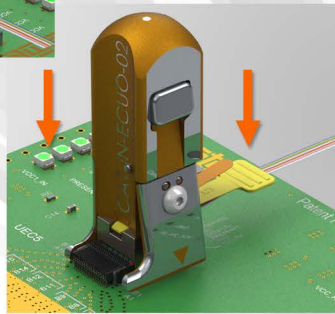
INSERTION AND REMOVAL INSTRUCTIONS



Requires Firefly™ Insertion Tool
CAT-IN-ECUO-02
(Instruction Sheet STS-N-009)

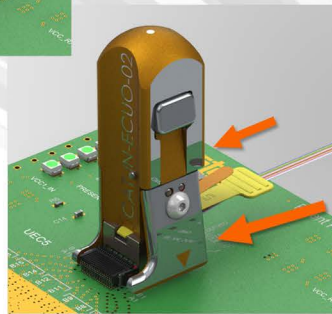


- 1 Align tooling with cable assembly so that notches in PCB are over the positive latching receptacle.

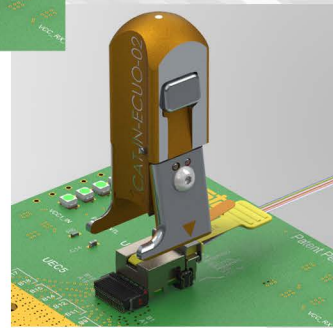


- 2 Drop tooling with cable assembly down keeping it parallel to board.

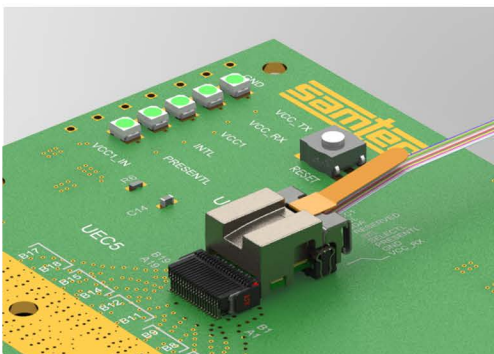
- 3 Slide tooling with cable assembly forward keeping it level to board until fully engaged.



- 4 To remove tool press the side button and lean tool slightly to the right and lift tool upwards.



Mated (Latch Down)



- 5 Remove by pulling the latch position retainer.

