



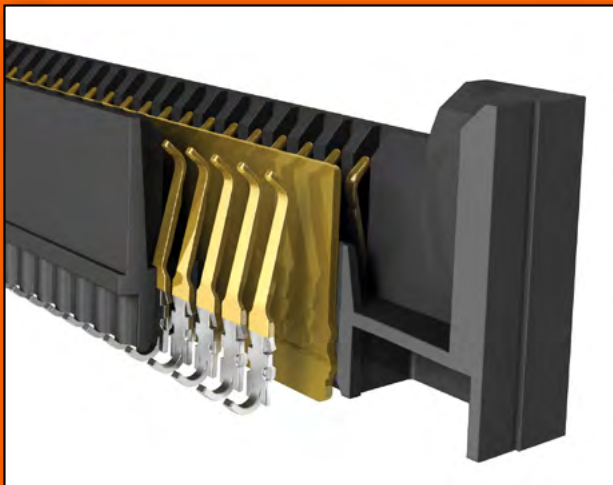
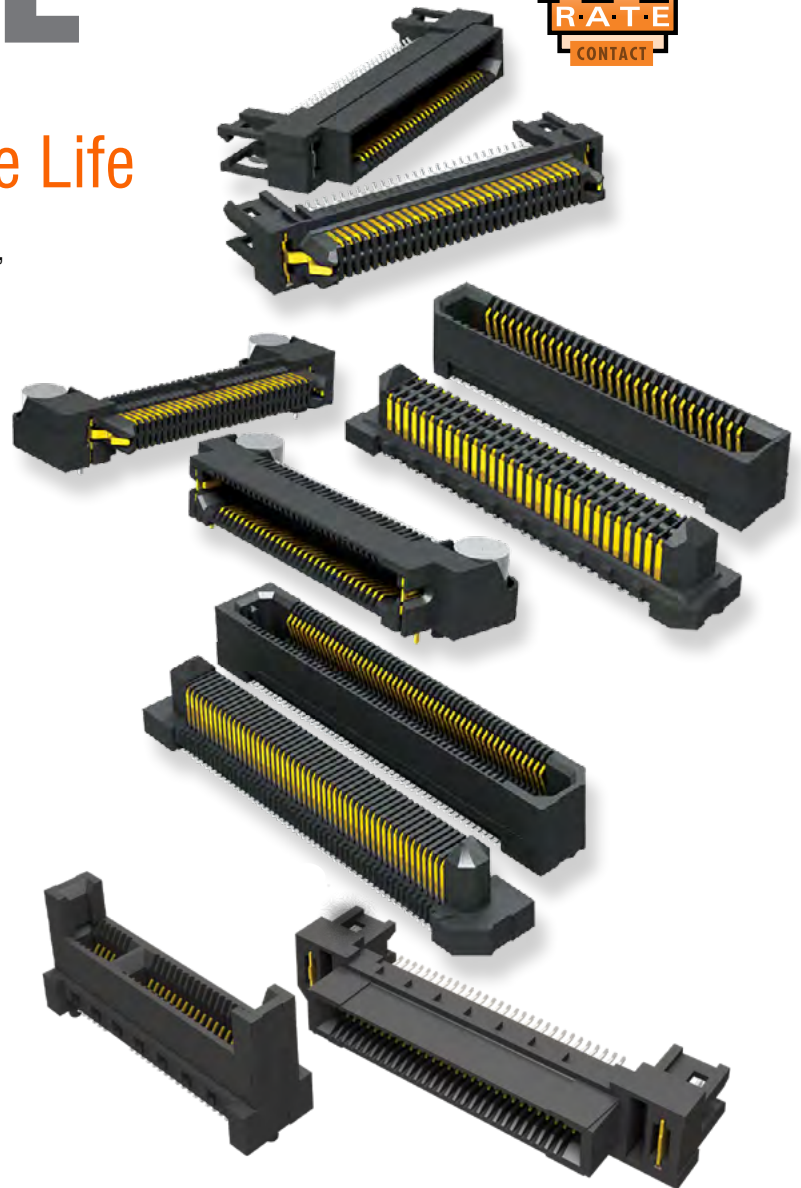
EDGE RATE[®]

Edge Rate[®] Contacts Offer High Speed and High Cycle Life

Samtec's Edge Rate[®] contact system is designed for high speed, high cycle applications. The surface of the Edge Rate[®] contact is milled creating a smooth mating surface area instead of a stamped contact that mates on a cut edge. This smooth mating surface reduces the wear tracks on the contact increasing the durability and cycle life of the contact system. It also lowers insertion and withdrawal forces allowing the connectors to be zippered when unmating.

In addition to increased durability and extended cycle life, the Edge Rate[®] contact has superior electrical performance compared to most stamped contacts. The Edge Rate[®] contacts are positioned in the plastic insulator so the narrow edges of the pins are parallel to each other. This minimizes the parallel surface area reducing broadside coupling and crosstalk.

Additionally, Edge Rate[®] contacts expand the electrical benefits to include impedance matching. The intricate details of the contact geometry are designed, simulated, and optimized electrically for 50Ω and 100Ω systems given the contact pitch and appropriate grounding schematics.

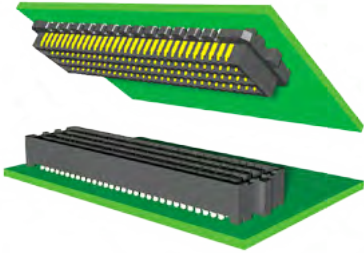


Features:

- Controlled impedance Edge Rate[®] contacts optimize signal integrity by minimizing broadside coupling and crosstalk
- Robust when “zippered” during unmating
- Vertical, right angle and edge mount connectors on 0,50 mm and 0,80 mm pitch
- High speed edge card connectors for rugged micro backplane applications
- Floating contact system compensates for tolerance build-up and misalignment with “float” in X and Y directions

HIGH SPEED SYSTEMS

SEARAY™

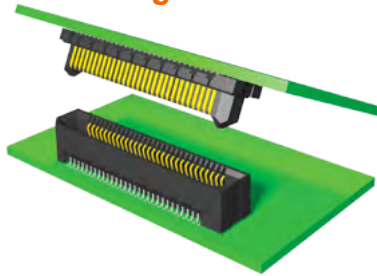


SEAM/SEAF

High Speed/High Density Array

Pitch: .050" (1,27 mm)
Total Positions: 40 - 150
Stack Height (mm): 7-17.5
Performance: Single Ended - 12.5 GHz
(7 mm Stack Height)
Differential Pair - 13 GHz
(7 mm Stack Height)
Orientation: Vertical and Right Angle

Edge Rate®

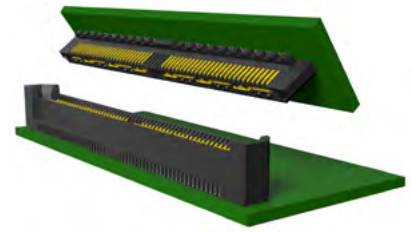


ERM8/ERF8

High Speed Edge Rate®

Pitch: 0,80 mm (.0315")
Total Positions: 10 - 150
Stack Height (mm):
7, 9, 10, 12, 13, 14, 15, 16
Performance: Single Ended - 12 GHz
(7 mm Stack Height)
Differential Pair - 15 GHz
(7 mm Stack Height)
Orientation: Vertical, Right Angle, and
Edge Mount

Q RATE®



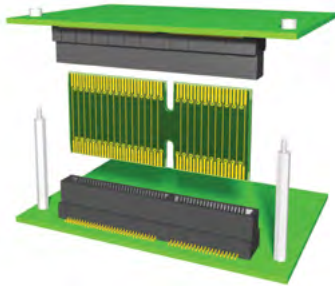
QRM8/QRF8

High Speed Edge Rate® with Integral Ground Planes

Pitch: 0,80 mm (.0315")
Total Positions: 52 - 156
Stack Height (mm):
7, 9, 10, 12, 14
Performance: Single Ended - 8.5 GHz
(7 mm Stack Height)
Differential Pair - 10 GHz
(7 mm Stack Height)
Orientation: Vertical and Right Angle

EDGE CARD SYSTEMS

High Speed Edge Card

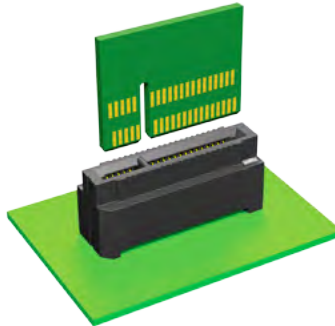


HSEC8

High Speed Edge Card

Pitch: 0,80 mm (.0315")
Total Positions: 18 - 120
Mates with: 1,60 mm (.062") cards
Performance: Single Ended - 9 GHz
(7,98 mm Stack Height)
Differential Pair - 14 GHz
(7,98 mm Stack Height)
Orientation: Vertical, Right Angle, and
Edge Mount

Low Cost High Density Edge Card

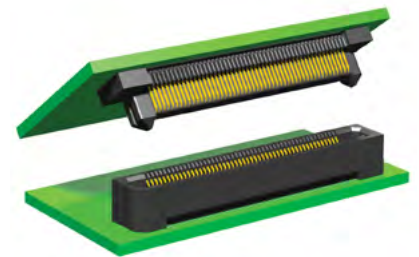


BEC5C

Low Cost High Density Edge Card

Pitch: 0,50 mm (.0197")
Total Positions: 80 - 140
Mates with: 1,60 mm (.062") and
2,40 mm (.094") cards
Orientation: Vertical

High Speed Edge Rate®



ERM5/ERF5

High Speed Edge Rate®

Pitch: 0,50 mm (.0197")
Total Positions: 20 - 150
Stack Height (mm): 7, 9, 10, 11, 12
Performance: Single Ended - 13.5 GHz
(7 mm Stack Height)
Differential Pair - 20 GHz
(7 mm Stack Height)
Orientation: Vertical and Right Angle