

netatmo
BY
STARCK®

1

You are replacing a wired thermostat

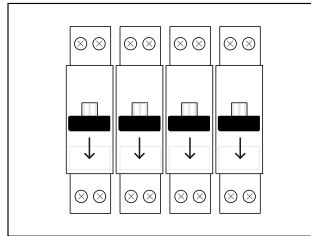
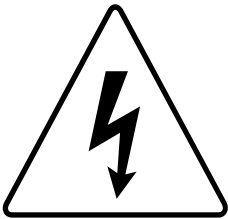


You can watch this installation on:
<http://netatmo.com/video1>

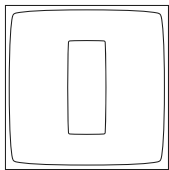
Warning

Warning!

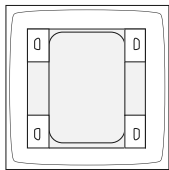
- Read carefully these instructions before starting the installation.
- The Netatmo Thermostat must be installed according to applicable standards.
- Before any intervention, make sure power is turned off.



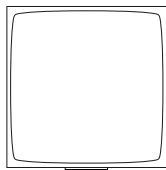
In the box



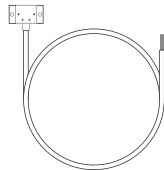
Thermostat



(Mobile stand)*



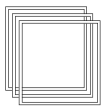
Relay



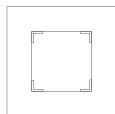
(Boiler adapter)*



Mounting Plate



Color Adhesives



Trim plate



Mains adapter



(Tape)*



Cover



3 AAA batteries



**4 screws
4 screw anchors**

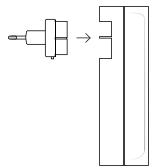


1 USB cable

** not used in this setup*

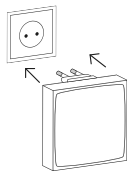
Relay

①



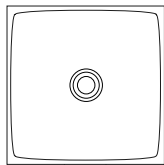
Plug the **mains adapter**
in the **relay**.

②



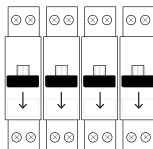
Connect the **relay** to a wall
socket in the same room
as your existing thermostat.

③



The **relay** blinks blue.

④



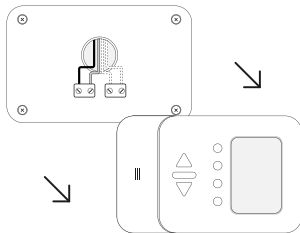
Switch off the power supply.

Identify

①

Remove the cover of your old thermostat.

Take a picture of the wiring.



②

- If there are only two wires, they are the control wires and are useful in this setup.
- If there are more than two wires, identify the two control wires. They are usually black or grey.

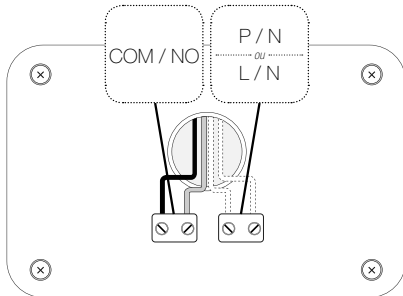
The wires can be identified as shown on the following diagram

Note: if there are more than two wires, the others are power supply wires and are useless here. They are usually brown, blue, green or yellow.

In doubt, please send a picture at photo@netatmo.com and our support team will help you identify the right wires.

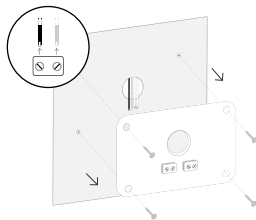
Control wires
Usually black
or grey wires

Power supply wires
Usually blue and
brown wires

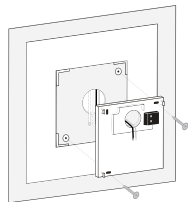


Replace

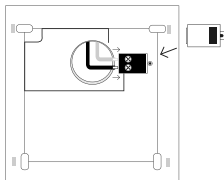
- ① Disconnect your former thermostat. Remove it from the wall.



- ② Pass the wires through the Netatmo **mounting plate** and screw the latter to the wall. To hide potential scratches and holes left behind, use the **trim plate**.

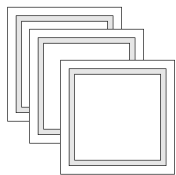


- ③ Screw the control wires previously identified into the electrical terminals and insulate the unused wires. Place and screw the **protection cover** onto the electrical terminals.

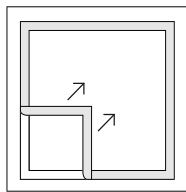


Customisation

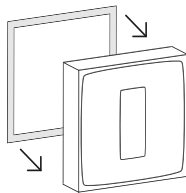
- ① You can choose to customise your **Thermostat** by using one of the **colour adhesives**.



- ② Take off the outer frame of the **adhesive**.

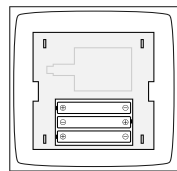


- ③ Stick it on the back of your **Thermostat**.

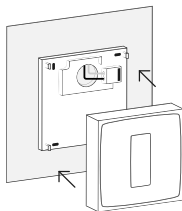


Thermostat

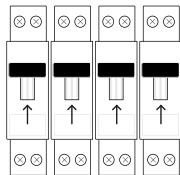
- ① Insert the batteries in the **Thermostat**.



- ② Set the **Thermostat** on the mounting plate.

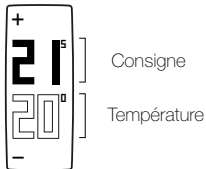
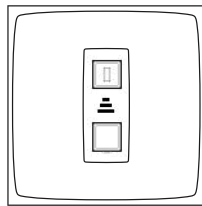


- ③ Switch the power supply back on.



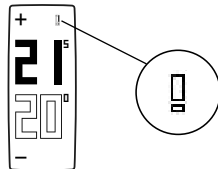
Thermostat

The **Thermostat** displays the start screen and searches for the **relay**.



If the **Thermostat** has found the **relay**, it displays the setpoint and the room temperatures.

.....
ou
.....



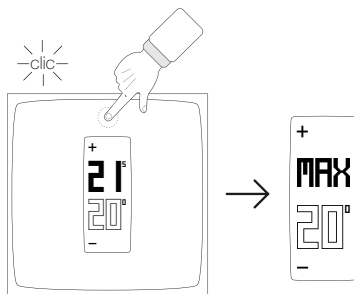
If the **Thermostat** hasn't found the **relay**, it displays the «!» symbol. In this case, move the **relay** closer to the **Thermostat** and wait until the «!» symbol disappears.

Test

①

Push several times the top of the **Thermostat** until it displays « MAX ».

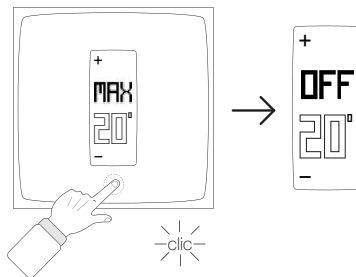
The **Thermostat** switches the boiler on.



②

Push several times the bottom of the **Thermostat** until it displays « OFF ».

The **Thermostat** switches the boiler off.



Note: if the Thermostat doesn't switch on and off the boiler, the control wires have been incorrectly wired. In this case, check your wiring using the picture of your old thermostat's wiring to identify the right control wires.

App

To control and program your Thermostat from your smartphone, tablet or computer, visit:

<http://thermostat.netatmo.com>



PC / Mac



Smartphone / Tablettes

Specifications

SIZE

Thermostat : 83x83x22 mm

DESIGN

Designed by Starck.

Translucent minimalist plexiglass cube.
5 interchangeable colors in the box.

SENSORS AND MEASUREMENTS

Température (measurement):

Ranges from 0°C to 50°C

Accuracy: +- 0.5° C

Température (setpoint):

Ranges from 7°C to 30°C

Increment: 0.5°C

Unit: °C

E-INK DISPLAY

Energy efficient, longer battery life and optimal readability.

FREE APP, LIFETIME SUPPORT

No subscription fee.

App available on the App Store and on Google Play.

Free access to your online personal dashboard.

Accessible from multiple devices.

WIRELESS SPECIFICATIONS

Wi-Fi 802.11 b/g/n compatible (2.4GHz).

Supported security: Open/WEP/WPA/WPA2-personal (TKIP and AES).

Wireless connection between thermostat and relay:
radio long range 100m.

POWER AND BATTERIES

3 AAA batteries.

1 year battery life.

SETUP AND COMPATIBILITY

Compatible with gas, fuel and wood boilers.

Switching current: max 4 A

Switching voltage: max 250 VAC

Switching power: max 120 W

COMPATIBLE WITH IPHONE AND IPAD

iPhone 4, iPhone 4s, iPhone 5, iPhone 5c / 5s

iPad mini, iPad mini with Retina display, iPad 2,

iPad (3rd generation), iPad (4th generation),

iPad Air

iPod touch (5th generation)

COMPATIBLE WITH ANDROID SMARTPHONE

Android 4.0 required

EU Declaration of Conformity

We, Netatmo, declare that this device is in compliance with the essential requirements and other relevant provisions of Directive 1999/5/EC.

Safety warnings

This device must be installed according to the applicable norms.

Use only with supplied power plug adaptor and boiler adaptor. This device is for indoor use only. Before inserting the batteries, check that the contacts in the device and on the batteries are clean, and clean them if necessary. Note the polarity (+/-) when inserting the batteries.

Do not throw the batteries into a fire, short-circuit it or dismantle it. Keep children away from batteries. Seek medical attention immediately if a battery is swallowed.

Do not attempt to repair the device yourself; an after-sales service is available.

Any changes or modifications to this unit not expressly approved by the party responsible for compliance could void the user's authority to operate the equipment.

Thermostat and relay insulation: class II devices.

This device is not intended for use by persons (including children) with reduced physical, sensory or mental capabilities, or lack of experience and knowledge, unless they have been given supervision or instruction concerning use of the appliance by a person responsible for their safety. Children should be supervised to ensure that they do not play with the appliance.

Legal notice

"Made for iPod", "Made for iPhone", "Made for iPad" mean that an electronic accessory has been designed to connect specifically to iPod, iPhone and iPad and has been certified by the developer to meet Apple performance standards. Apple is not responsible for the operation of this device or its compliance with safety and regulatory standards.

Please note that the use of this accessory with iPhone may affect wireless performance.



<http://support.netatmo.com>

