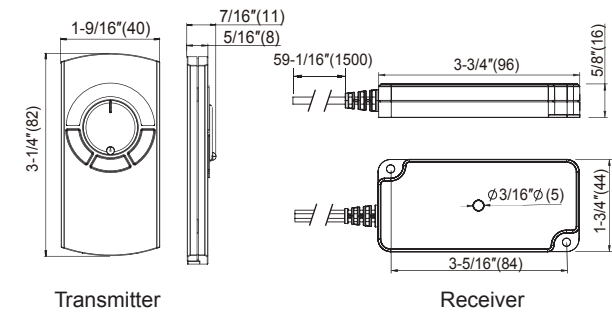




Dimensions: (inches/mm)

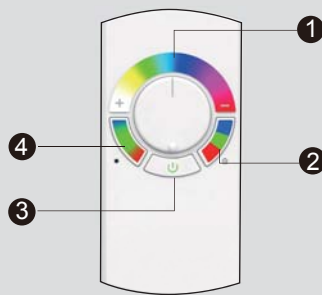


■ Features

- Working frequency: 2.4GHz
- Power: CR2032 (3V) button lithium battery
- Remote range: ≤590-9/16" (15m)
- Memory function: Light will return to last setting before shut off.
- Single Remote can control multiple RGB lights

■ Characteristics

	Model No.	Rated supply	Rated load	Power	ta	L x W x H	Approval
Transmitter	KZQ-16YKA			CR2032 (3V) button lithium battery	-4~95°F (-20~35°C)	3-1/4"x1-9/16"x7/16" (86x50x11mm)	CE
Receiver	KZQ-14XJA	DC 12V	Max.30W		-4~95°F (-20~35°C)	3-3/4"x1-3/4"x5/8" (96x44x16mm)	CE
		DC 24V	Max.60W				



1 Color Wheel

Rotate to select the desired color with the indicator line.

2 Flash mode button

The lamp color will flash from one to the other: white, yellow, green, blue, purple, red.

3 On/off button

Press the button to turn on and off. The remote will go dormant after 1 minute of inactivity. Press the on/off button to reactivate the remote.

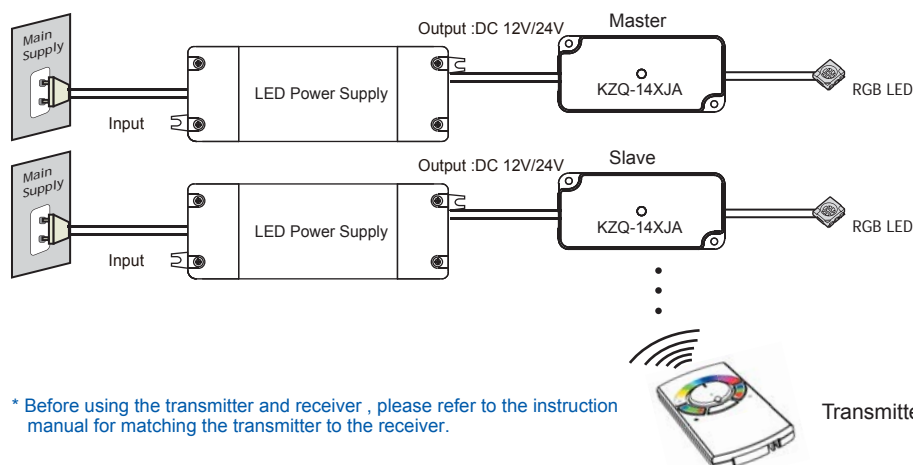
4 Fade mode button

The lamp color will fade gradually from one to another.

Other functions:

1. Brightness Level: press and hold down the Fade mode button while rotating the Color Wheel. The three brightness levels go from "+" for brightest to "-" for dimmest.

2. Color Change Speed: To change the speed at which the colors change (gradually and flashing), press and hold down the Flash mode button while rotating the Color Wheel. The three speed settings go from fastest at "+" to slowest at "-".



* Before using the transmitter and receiver , please refer to the instruction manual for matching the transmitter to the receiver.