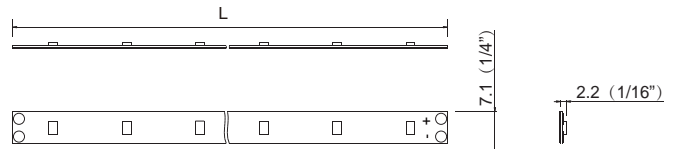


## RIBBON

Dimensions: (inches/mm)

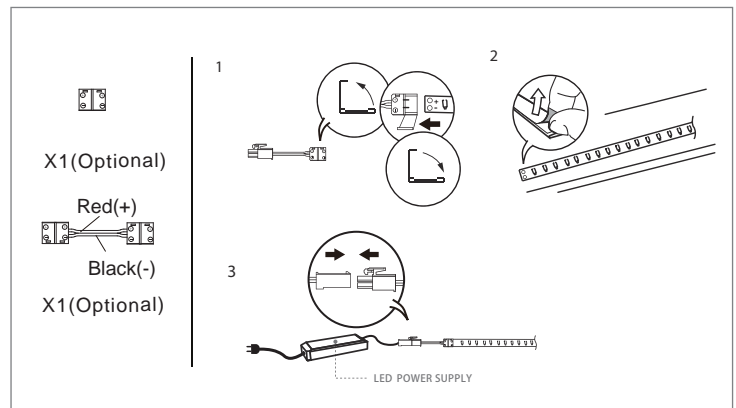


### Highlights:

- Linkable
- Custom design length
- Flexible and compact design
- Bright and constant illuminance for display area
- Lifetime: 50,000hrs( $t_a=77^{\circ}\text{F}$ ,  $25^{\circ}\text{C}$ )
- $T_a$ :  $-4^{\circ}\text{F}\sim 77^{\circ}\text{F}$ ( $-20^{\circ}\text{C}\sim 25^{\circ}\text{C}$ )
- Material: Aluminum Alloy

### Application:

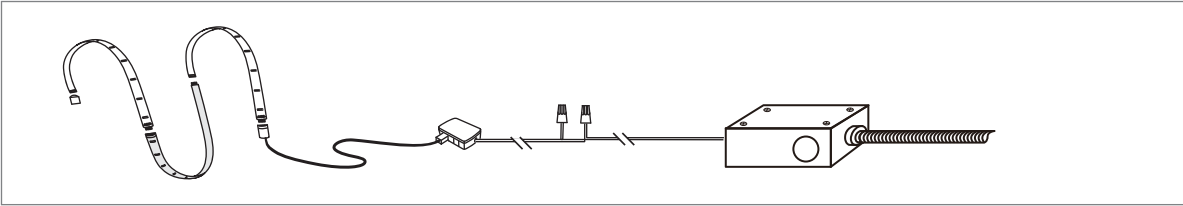
- Ideal for illuminated shelving, various showcases, background lighting, etc. for retail market.



# Flexible Strips



## Wiring diagram:



## How to order (using our catalog numbers): (Example: RIBBON-19730K110WAT)

Series	Length	Color Temp	Beam Angle	Finish	Installation
RIBBON	-				
RIBBON	197 - 196-7/8"(5001.5mm)	30K-3000K 40K-4000K 50K-5000K	110 - 110°	W - White	AT - Adhesive Tape

Catalog No.	Model	Description					Max. Pcs Per LED Power Supply 96W (9-9624DL-26)
		Rated Input	Ra	Wattage	Luminous Flux(TYP@4000K)	Include	
RIBBON-19730K110WAT	RIBBON-F306-24V	24VDC	85	65W	5850 lm	1pc LED fixture with double faced adhesive tape	1 pc
RIBBON-19740K110WAT							
RIBBON-19750K110WAT							

\*Note: By cutting, the length of Ribbon can be  $(3-7/8" \times n)$ , while power is  $(1.27 \times n)$ , 'n' is a integer  $\leq 52$ .  
Multiple runs not to exceed max driver wattage.

## How to choose your driver & cables:

Catalog No.	Description	Photo
IC-RB-59	Input cable 59" (must between the lights and splitter)	
OC-08S-6T	Output cable of Power supply 6" with P008-2P Socket and ends tinned	
9-9624DL-26	Model: SLD96-24VC-UN1 Matching driver, max. 96W. Input: 120-277VAC 9" hard wire Output: 24VDC 26" hard wire	

\*Note: For alternative driver configurations, please contact our sales department.

## Optional:

Catalog No.	Description	Photo
SC-RB-2	Soft connector 2" (50mm)	
SC-RB-12	Soft connector 12" (300mm)	
HC-RB	Hard connector	