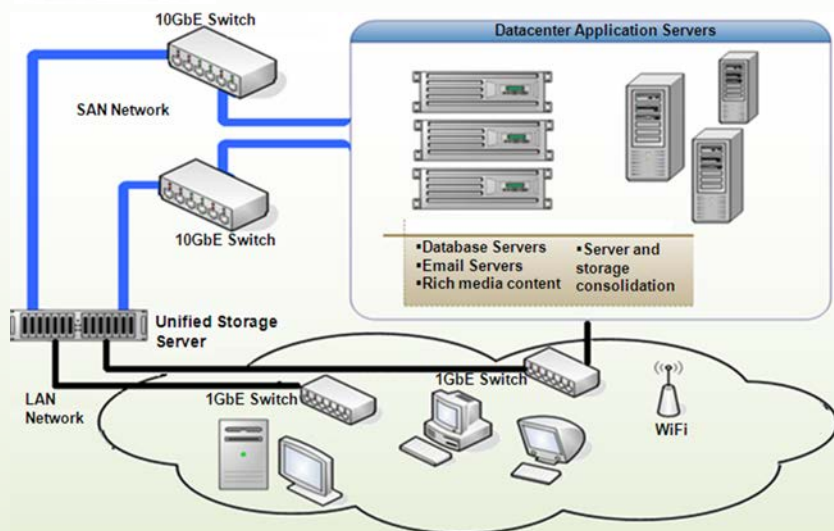


Unified Storage Server- Product Configuration & Selection Guide

USS - Unified Storage Server



- 10GbE/1GbE enterprise ready high-performance iSCSI SAN, NAS, and RDMA Storage Solution.
- All software necessary to instantly convert any 64-bit Intel or AMD based system into a Unified Storage target.






Unified Storage Server ordering info – modules:

USS2.0 is modular structure software. Base version supports basic functionalities to deliver a 10GbE iSCSI SAN/NAS storage solution. Other enterprise features are available as add-on modules to the base version to deliver a scalable, low TCO and high performance storage solution.

- USS 2.1 - SAN** iSCSI Target, volume management, manual snapshot, remote management. Must be purchased with MAINT1
- USS 2.1 - NAS** NFS, CIFS, FTP, HTTP, Lustre, volume management, manual snapshot, remote management
- USS 2.1-FC** - FC Target service, 32TB
- USS 2.1-RDMA** - NFSRDMA (requires NAS module)
- USS 2.1-HA** - High Availability support (requires TP + SAN or NAS)
- USS 2.1-REP**- Replication support between two USS systems (requires SAN or NAS)
- USS 2.1-TP** - Thin Provisioning, Encryption support (requires either SAN or NAS, can only be purchased on initial install)
- USS 2.1-CS** - Cloning, instant restore, scheduled snapshot (requires TP + SAN or NAS)

USS Reference Design Appliances using Off-the-Shelf Hardware

Chelsio Ref Design P/N	Configuration	
USS-2108-REF	Dual 1/10 GbE USS Reference Design (Base + REP + TP), 4U, 108TB, SATA, HW RAID, redundant supplies, battery backup, external SAS ports	
USS-2048-HA-REF	Dual 1/10 GbE USS Reference Design (Base + REP + TP + RDMA + HA), 3U, 48TB, SATA, SBB, dual-head HA, SW RAID, redundant supplies, external SAS ports	
USS-2048-REF	Dual 1/10 GbE USS Reference Design (Base + REP + TP), 3U 48TB, SATA, HW RAID, redundant supplies, battery backup, external SAS ports	
USSMAINT1	Annual maintenance. Includes HW fixes, replacements & SW maintenance.	

Unified Storage Server ordering info – bundles & maintenance:

- USS 2.1 - BNDL-L** - SAN+NAS+REP+TP
- USS 2.1 - BNDL-XL** – SAN+NAS+REP+TP+CS+RDMA
- MAINT1** - Annual software maintenance (per seat).

Choice of Performance, Scalability and Capacity