

SI-2K Image & Software Install Manual



SiliconDVR
Version 1.1

Silicon Imaging

December 2008

Part #25436

Table of Contents

Section	Page
1.0 - Introduction	3
1.1 Release Notes for SiliconDVR Version 1.1	3
2.0 SI-2K Maintenance Tool (SI-2K Recorder Use)	6
2.1 Download and Pre-installation	6
2.11 Downloading	4
2.12 Prepare the USB Drive	5
2.2 Before You Boot	9
2.3 Using the Maintenance Tool	10
2.4 Troubleshooting	12
2.5 Touchscreen Calibration & Drivers	13
3.0 SiliconDVR Installer (PC/Laptop Use)	14
3.1 - Minimum System Requirements	14
3.2 - Installing SiliconDVR for Intel Pro1000 NIC's	15
3.3 - Installing SiliconDVR for Generic NIC's	20
3.4 - Uninstalling SiliconDVR	29
4.0 Troubleshooting FAQ	33
5.0 End User License Agreement	36

1.0 Introduction

This manual covers the installation and update procedure for the following:

- SI-2K Recorders using Maintenance Tool (Section 2)
- PC/Laptop Systems with Software Installer (Section 3)

The SI-2K Image installation uses a new **SI-2K Maintenance Tool** to update both SiliconDVR and the full operating system which resides on the internal Compact Flash. Once updated, no additional software or driver installation is required. This update procedure overwrites the entire internal flash image and any user files or custom looks which may have been created, should be backed-up prior to the update procedure.

The **SiliconDVR** Installer is designed to run on an XP or Vista computers that will be used as the recorder for SI-2K Mini cameras. The install instructions include those for systems with the following configurations

- Intel High-Performance Pro/1000 NIC
- Generic Gigabit Ethernet NIC systems (eg. Marvell Yukon)

The installer includes all of the licensed software and drivers necessary for operation of the camera. No additional licenses are required to operate the system. A complete list of new features and enhancements can be found in Section 1.1.

Check for the most current information on the SI-2K Image and SiliconDVR on our website under 'Support'. The address is:

http://www.siliconimaging.com/DigitalCinema/SiliconImaging_support.html

There is an End User License Agreement (EULA) at the end of this document (Section 5). By installing the software, you have agreed with the terms of this document. Please read it before proceeding.

For additional support, please email: support@siliconimaging.com

1.1 Release Notes for SiliconDVR Version 1.1

Image Quality

- Improved reliability in black calibration
- Enhanced deviant pixel detection processes
- Increased total count of Deviant pixels detected and corrected
- Reduced column FPN in high-temp
- Higher Quality Cineform Encoder Modes (3.5:1)

Operational Reliability

- Feedback system during camera connection or loading new mode
- Greater stability when recording .SIV files to slow drives
- Fix for short file Time-lapse shooting and playback
- Improved reload of preferences after hard shut-down
- Fix for fan-mode switching bug which was locked into mode
- Ability to playback large QuickTime movie files (over 3GB)
- Deleting AVI/QT files recovers hard-drive space on indicators
- Auto licensing system for Iridas and CineForm
- QuickTime repair to recover files damaged during recording

Time Code Integration

- QuickTime encoder now supports timecode for 25P in Final Cut Pro.
- New support for the Ambient ALL-601 USB timecode reader
- Increased reliability and frame accuracy when in LTC Slave Mode

Stereo-3D Support

- Added support and improved reliability for 2K resolution modes
- Improved reliability for cameras configured as the 3D-slave

3rd Party Integration Support

- CineForm MAC/Final Cut Support for CineformRAW
- New Active Metadata Controls (.look, WB, Log) for MAC & PC
- Iridas support of .SIV and Cineform file formats

Laptop/PC System & OS Support

- Windows XP SP3 and Vista 32-bit Support
- MacBook Pro display performance Improvement
- Shutdown/Hibernate now initiate a Stop Recording

SI-2K & Windows-XP Embedded Support tools

- USB thumb-drive SI-2K Image Installer (Maintenance Tool)
- New XP-e Write Filter (FBFW) used to prevent data writing to the compact flash card which contains the OS Image. Only the SiliconDVR data folder is accessible for storing .looks and preference settings.

SI-2K Recorder: Known Issues & Limitations

- SIV Playback on slow drives can hang: Use higher speed drives, Raid or SSD
- High Speed CineForm modes (72/85/150P) will only do burst record on SI2K before RAM overflow. For continuous high-speed shooting you can use PC/Laptop.
- QuickTime .MOV requires more CPU overhead than AVI and will RAM buffer overflow at the highest quality settings. Use Adaptive encoding or .AVI format.
- Touchscreen calibration settings are not preserved if the write-filter is enabled. The work-around is to disable the FBWF write filter before performing calibration process. Then re-enable FBFW and reboot to maintain protection of the system OS. The shortcut for disabling and enabling the FWBF write-filter is inside the "/SI" directory on the SI-2K desktop.

2.0 SI-2K Maintenance Tool (For SI-2K Recorders Only)



The SI-2K contains a compact flash memory card that appears as the "C:" drive when the system is operating. The system boots and runs the SiliconDVR application from this drive.

The **SI-2K Maintenance Tool** is provided to quickly upgrade or restore the system's flash drive to a previous state, called a "snapshot". This is an exact image of the full camera system – SiliconDVR application, drivers and operating system. As such, any additions such as touchscreen calibration or custom looks are overwritten by the process.



The **SI-2K Maintenance Tool** uses a USB Flash Drive (a "thumbdrive" or "pen drive") which has been loaded with a special version of the Linux operating system that allows the system to boot independently of the internal flash drive and an application that allows snapshots to be written.

The Snapshot files are included with the Maintenance Tool in order to restore or upgrade the SI-2K.

2.1 Download and Pre-installation



If you have received the SI-2K Maintenance Tool already installed on a USB drive, you may skip to the section “**2.2 Before You Boot**”

2.1.1 Downloading

The SI-2K Maintenance Tool is distributed in a single ZIP file that may be more than 1GB in size. Download this file and save it to a computer running Windows. The application used to prepare the drive for booting is not available for Mac OS at this time. Please contact support@siliconimaging.com for ftp and password instructions.

2.1.2 Prepare the USB Drive

To create the Maintenance Tool, you will need a USB flash drive, at least 2GB and preferably 4GB. The drive should be empty and preferably freshly formatted with a “FAT32” file system.

Unzip the contents of the downloaded Maintenance Tool to the flash drive, making sure that the files are placed at the top level, not in a subdirectory. Once unzipped, the files should appear similar to Figure 1.

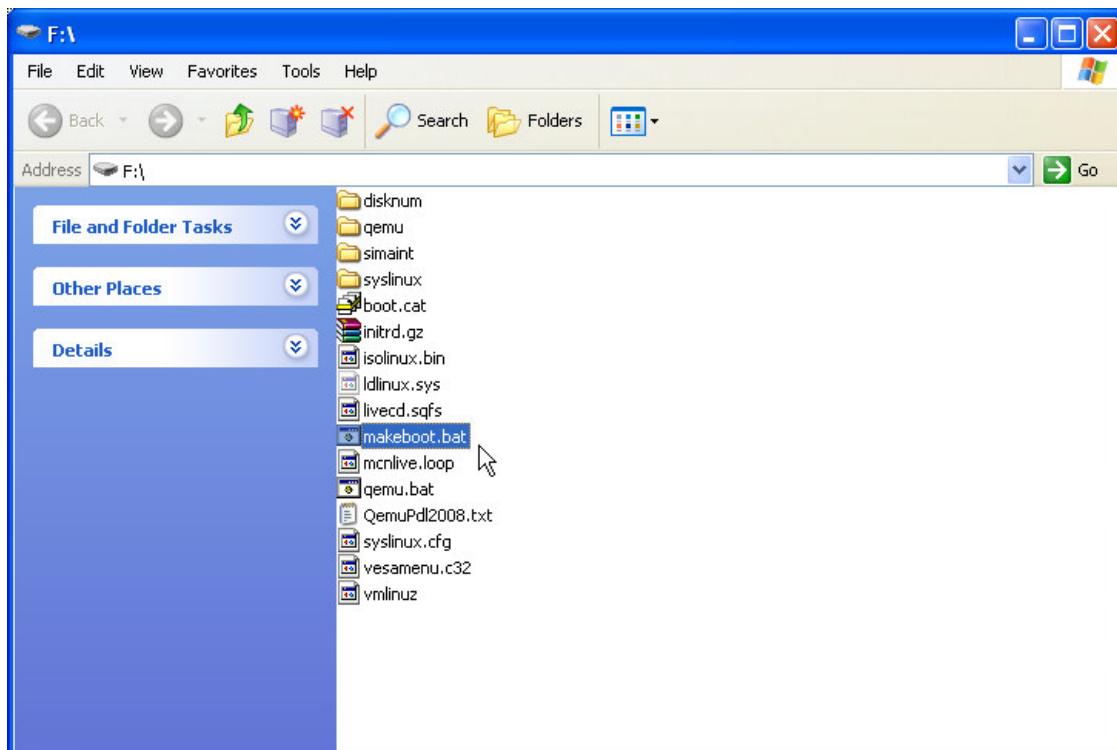
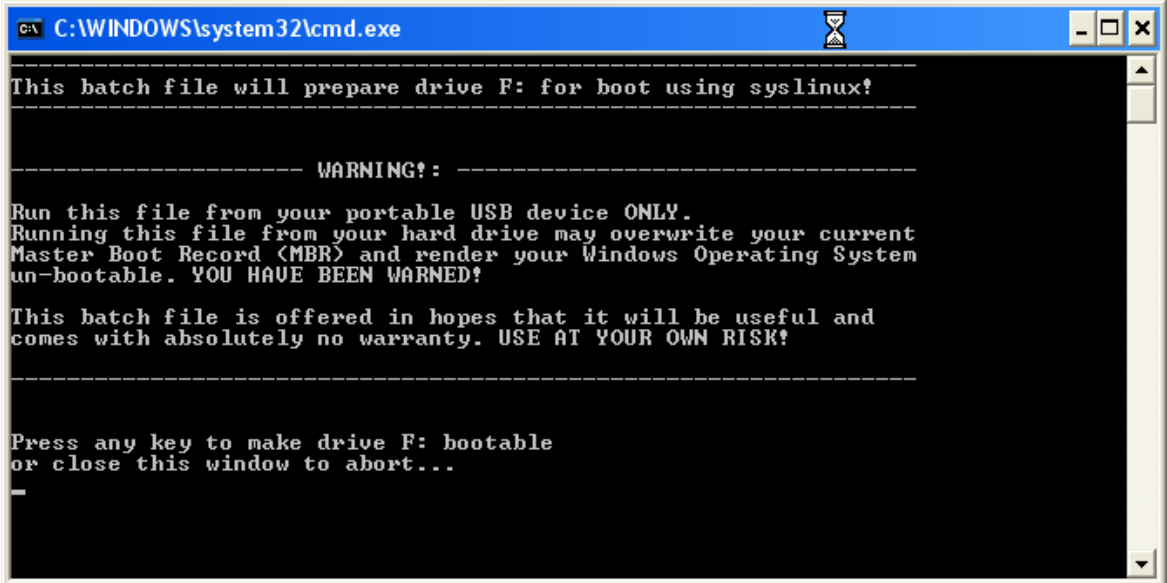


Figure 1

To make the flash drive bootable, double-click on the batch file “**makeboot.bat**”. (Note: You must be logged in to your PC with Administrator rights).

A warning message will appear as shown in Figure 2. Verify that the flash drive has been correctly identified, in this example it's drive "F:", and press ENTER to make the drive bootable.



```
C:\WINDOWS\system32\cmd.exe

-----
This batch file will prepare drive F: for boot using syslinux!
-----

----- WARNING! : -----

Run this file from your portable USB device ONLY.
Running this file from your hard drive may overwrite your current
Master Boot Record (MBR) and render your Windows Operating System
un-bootable. YOU HAVE BEEN WARNED!

This batch file is offered in hopes that it will be useful and
comes with absolutely no warranty. USE AT YOUR OWN RISK!

-----

Press any key to make drive F: bootable
or close this window to abort...
-
```

Figure 2

Use the "Safely Remove Hardware" function on the Windows Taskbar to insure that the drive is properly written prior to unplugging it.



Please note that almost all recently manufactured flash drives from reputable manufacturers are compatible with the SI-2K's booting process, but there are a few that may not work. If you encounter problems in the following steps, you may need to try a different kind of flash drive. For maximum compatibility, use the drive provided by Silicon Imaging.

2.2 Before You Boot



The Maintenance Tool is designed to modify only the internal flash drive, but it's always prudent to make sure that any work you have on the SI-2K has been copied off the system prior to using the tool. You may also choose to remove the hard drive carrier from the SI-2K prior to booting with the Maintenance Tool.

Customized ".LOOK" files are stored on the internal flash drive and will be overwritten during a snapshot restore. These must be copied off the system prior to restoring a snapshot.

After restoring a snapshot, touchscreen calibrations will need to be refreshed. Any third-party hardware that requires drivers will also need to be re-installed.

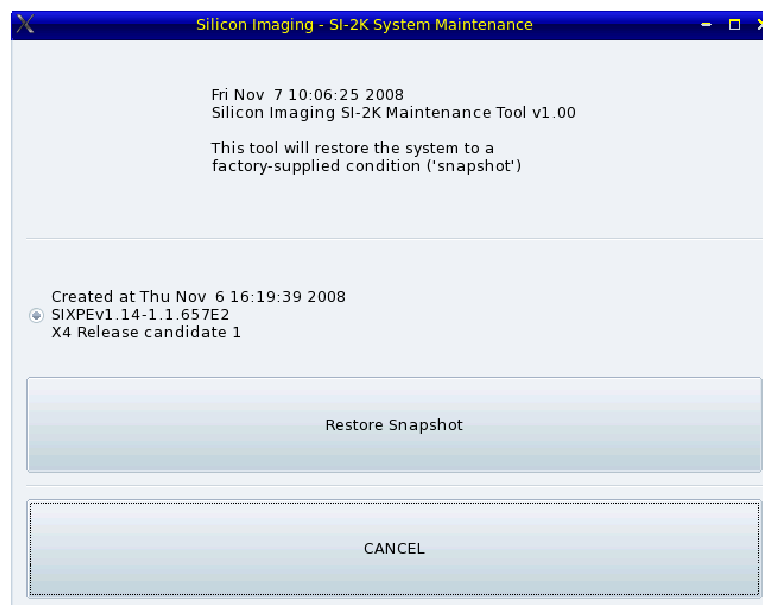
Beginning with the SI-2K powered off and a display device (external monitor, touchscreen or electronic viewfinder), plug the Maintenance Tool into either USB port on the rear panel of the SI-2K. If possible, it's preferable to power the SI-2K from it's external power supply rather than a battery to help insure that nothing interrupts the maintenance processes.

Switch the power on. The SI-2K will begin the first part of its normal boot process, then control will switch over to the Maintenance Tool. The booting process will take about a minute and during this, you'll see a variety of informational and warning messages appear on the screen. This is a normal part of the Linux operating system's boot process and **error messages during this phase may be ignored.**



If the camera does not boot to the USB drive, the boot order is incorrect in the BIOS. Attach a USB keyboard to the camera, reboot and hold the 'Delete' key. Under 'Advanced BIOS Features', the first boot device should be USB-ZIP. If this is not the case, use the arrow keys to select the first boot device, use 'ENTER' to modify this and use the arrow keys to select the USB-ZIP drive. The 2nd or 3rd boot device must be "hard disc".

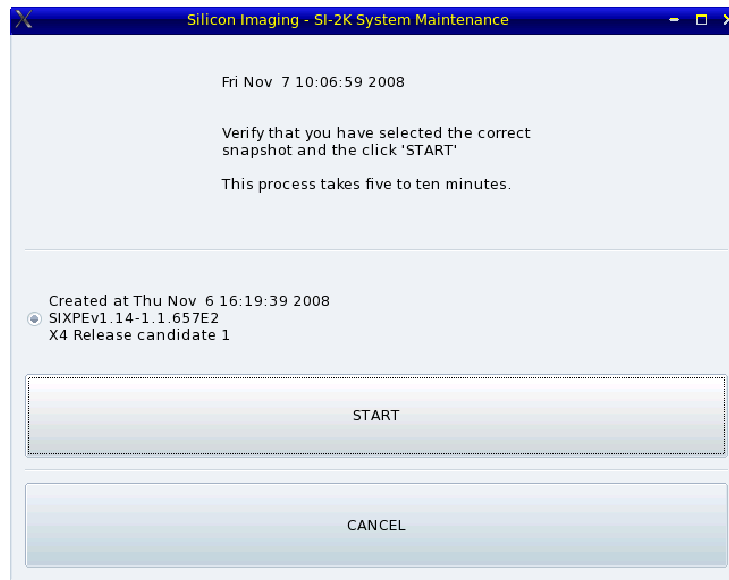
When the boot process is complete, you will see the Maintenance Tool interface as shown below.



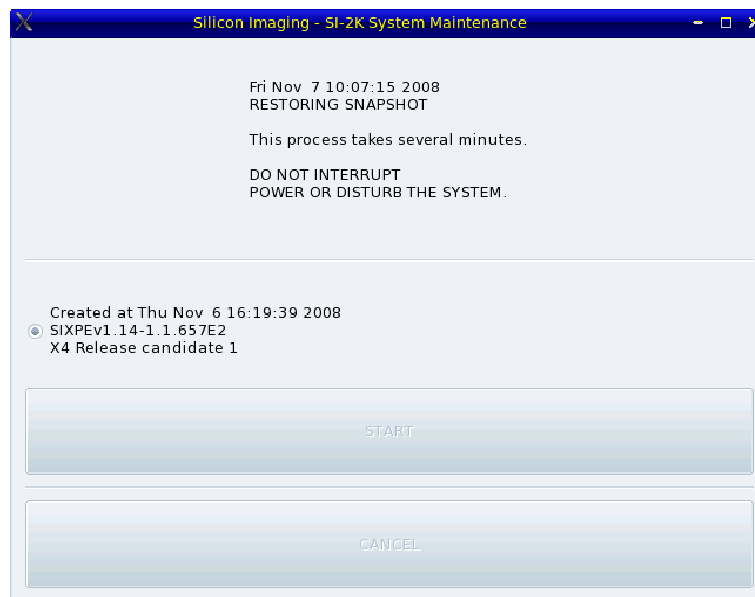
2.3 Using the Maintenance Tool

The Maintenance Tool interface is operated using the mouse on the side of the SI-2K (not via touchscreen). There are two types of flash media used in the SI-2K, Transcend and X4. Snapshot Images for both media types are provided in the Maintenance Tool and the appropriate image will be automatically selected. A brief description of the snapshot along with the date of its creation is shown.

Press "**Restore Snapshot**" to begin. Then click the large button now labeled "**START**".



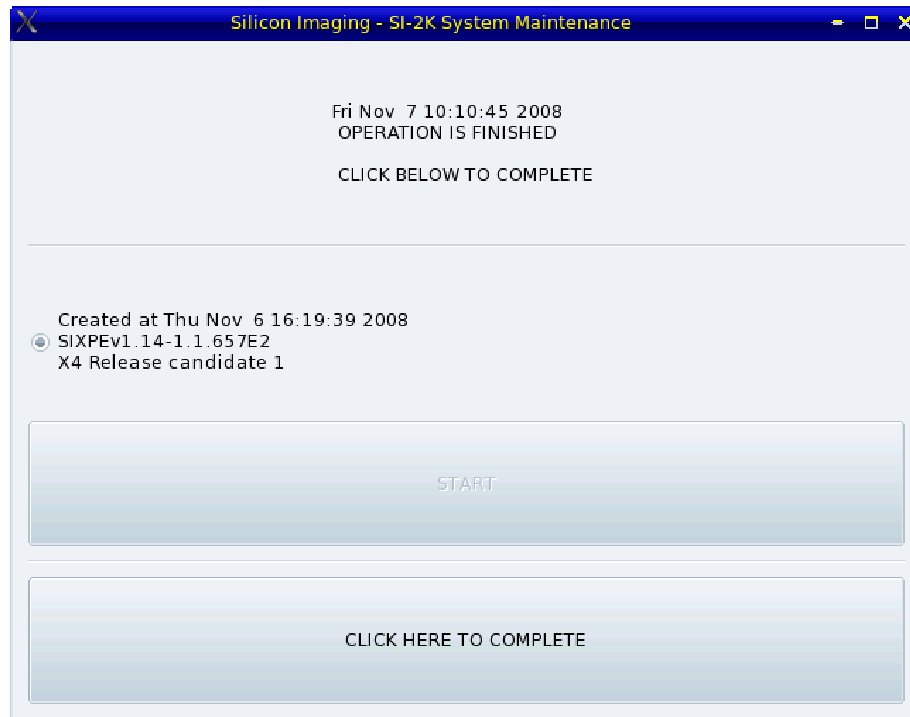
If you decide not to restore the snapshot prior to starting the process, you may safely select "**CANCEL**" to abort the process and the system will perform a shutdown.



You should always use the "**CANCEL**" button and wait for the system to shut down prior to switching the power off and removing the USB flash drive.



Once the restore operation has completed, which typically takes five to ten minutes, you will see a message reporting **OPERATION IS FINISHED**.



Click the large button at the bottom "**CLICK HERE TO COMPLETE**" to begin the system shutdown and insure that data written to the internal flash drive is safely stored.



Note: The option to cancel the process once a restore has started is not available. If the restore process is interrupted, the internal flash drive will be in a corrupted state. Always wait for the Maintenance Tool to report that the process has completed and allow it to shut down the system before switching off the power.

Although there are additional capabilities available via the Linux operating system that underlies the Maintenance Tool, you should only use the options available via the Maintenance Interface unless directed otherwise by Silicon Imaging.

About 30 seconds after the shutdown process is initiated, after a series of text messages from the operating system shutting down, you will see a single line indicating "System Halted" and the stream of text will stop.

At this point, you may switch off power to the SI-2K and remove the Maintenance Tool USB drive. The snapshot is now restored and you may switch on the power to the SI-2K and verify that the restoration or upgrade has succeeded.

The SI-2K will power on and go thru one automatic reboot cycle. Upon reboot, the camera will startup SiliconDVR and ready to shoot.

2.4 Troubleshooting

2.4.1 BIOS SETTINGS IF BOOT FAILS

If the SI-2K does not boot into the Maintenance tool, the BIOS boot settings may need to be adjusted.

1. Connect a USB Keyboard and a monitor to the VGA port (do not use the SI-2K Electronic Viewfinder) to the switched off camera.
2. Switch on the camera and press the "DEL" Button in order to enter the BIOS as soon as the camera gives you that option (during start up the first time you see information on your monitor)
3. Within the BIOS, go into the Advanced BIOS features --> HDD boot priority and set the USB-ZIP as the first boot disk, and the removable SATA as the second boot disk (it's not a boot disk, but just set it in the second position)
4. Set the Boot Disk Priority from "Fixed" to "Dynamic" then return to the Main BIOS Menu by pressing "ESC" two times.
5. Go into the Integrated Peripherals->On-Chip IDE Devices and then set the On-chip Serial ATA to "Enhanced", set the SATA mode to "IDE", and then set the SATA port speed to "FORCE GEN I". Then return to the Main BIOS Menu by pressing two times "ESC".
6. Select "Save and Exit"

2.4.2 CAMERA CONNECTION ERROR

If the SI-2K system performs its reboot operation and enters SiliconDVR, after a 2minute delay, but has an error connecting to the camera, you may need to change the settings of your driver. due to minor difference in Gigabit Ethernet Hardware.

1. QUIT SiliconDVR Disable Write Filter by selecting "Disable FBWF and Reboot" shortcut in the SI folder on the desktop. System will reboot.
2. QUIT SiliconDVR and follow steps on Page 17 (step 12~18), Run EbdriverTool and assign Port 1 (Intel Pro1000) with High Performance Driver.
3. While the WriteFilter is disabled, you should also set your Audio Input levels and Calibrate your touchscreen (as stated in 2.5).
3. Enable WriteFilter, using shortcut is Desktop /SI folder.

2.5 Touchscreen Calibration & Drivers

The flash drive of the SI-2K is protected from inadvertent writing by the File Based Write Filter (FBWF). This protection keeps the file system from being corrupted during unexpected shutdowns, such as when the battery runs down. In order to make changes to the system files, it is necessary to turn off this protection, make the changes and then re-enable the protection.



While the FBWF is off, be sure that the camera cannot lose power and is always shut down or rebooted under software control.

1. Disable FBWF by selecting "Disable FBWF and Reboot" shortcut in the SI folder on the desktop
2. After the reboot, perform the Touchkit calibration or additional device drivers
3. Enable FBWF by selecting "Enable FBWF and Reboot" shortcut in the SI folder on the desktop
4. After the reboot the system is ready to use



Although the camera will operate with the FBWF disabled, it is strongly suggested that the filter be immediately re-enabled after any maintenance.

3.0 SiliconDVR Installer (For PC/Laptop Only)



The installation instructions for installing SiliconDVR are split into two sets: One for Intel Pro1000 NIC-based systems, and a second set for other generic NIC's systems not compatible with the Pleora High Performance Driver for Intel Pro1000 NIC's (eg. Marvell Yukon). These installation instructions assume a clean install of SiliconDVR.



If a previous version of SiliconDVR has been installed on the computer, follow the uninstall steps in '**3.4 Uninstalling Previous Versions of SiliconDVR**'.



The SiliconDVR Installer is only to be used on computers meeting the minimum system requirements outlined below. It is not for use on the SI-2K

3.1 - Minimum System Requirements:

- Windows XP SP2 32-bit, SP3 32-bit, Vista Business 32-bit, Vista Ultimate 32-bit (Note: SiliconDVR 1.1 is not compatible with 64-bit versions of Windows).
- Intel Core 2 Duo 2.33Ghz Processor or faster. For Windows Vista, suggested CPU processor is 2.4Ghz Intel Core 2 Duo or faster.
- 2GB of RAM. For Windows Vista, 4GB of RAM suggested.
- Either Intel Pro1000 NIC or other 10/100/1000 Gigabit Ethernet NIC capable of 8K Jumbo Packets
- Intel GMA950 embedded graphics, GMA X3100 embedded graphics or Nvidia Geforce/Quadro series of discrete graphics cards.
- Hard-drive or SSD capable of sustained write throughput of 30MB/s.

3.2 Installing SiliconDVR for Pro1000 NIC's:

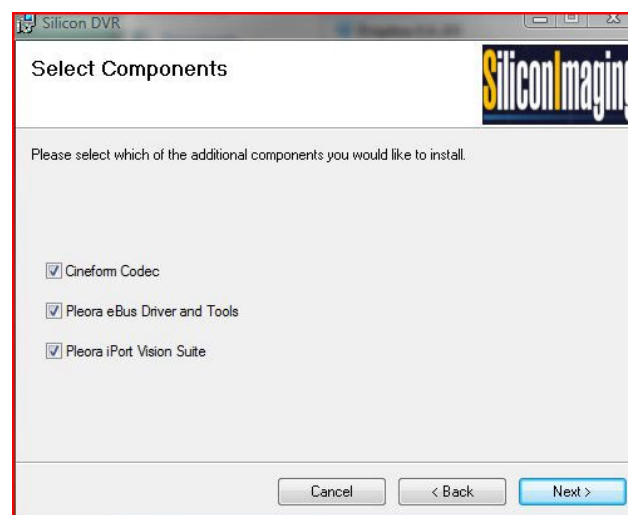
1. Certify that the Pro1000 NIC being used for SiliconDVR has the Intel Pro1000 NIC driver software installed and the NIC can operate as a "normal" NIC, capable of receiving normal TCP/IP network traffic such as email, internet, file-sharing, etc.



2. Open the SiliconDVR Installer. You will be greeted by the installer splash-screen. Press the "Next" button.



3. When you reach the "Select Components" screen, make sure that all three selections for CineForm, Pleora eBUS and Pleora iPort are checked.

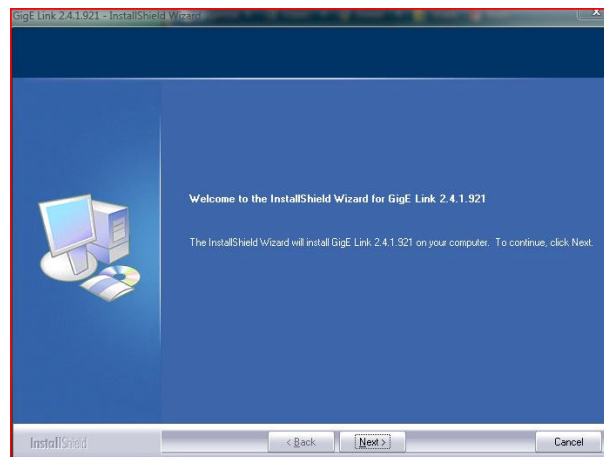


4. Click the "Next" button and proceed with the installation of SiliconDVR.

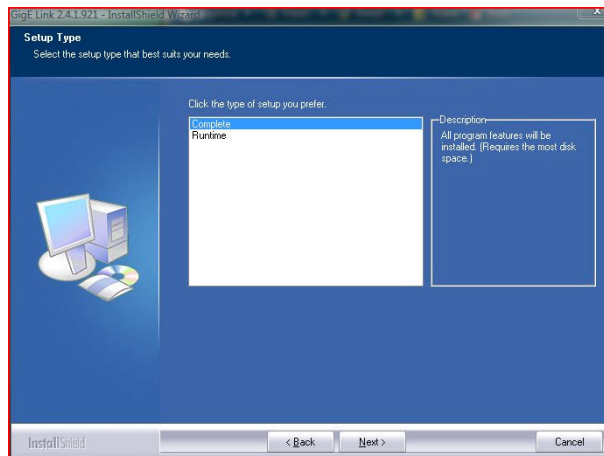
5. After SiliconDVR is installed, the CineForm installer will launch. Click though the “next” button and then when you arrive at the install screen, press the “Install” button.



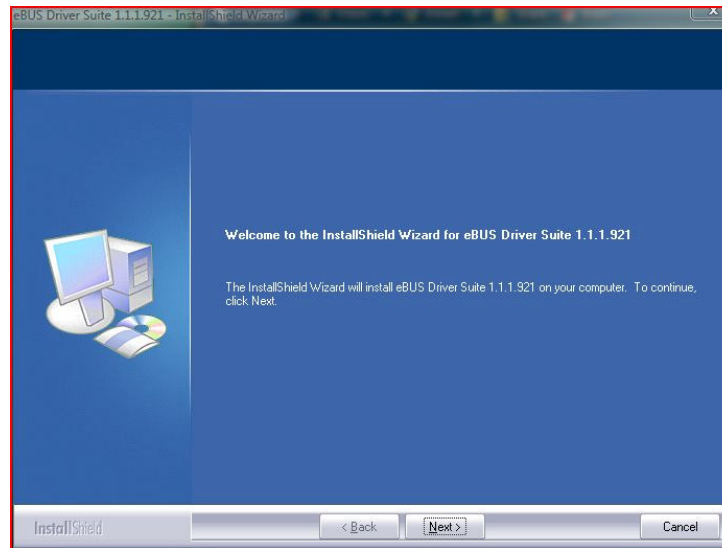
6. After the CineForm Installer completes, the Pleora iPort Vision Suite will be installed. Click the “Next” button.



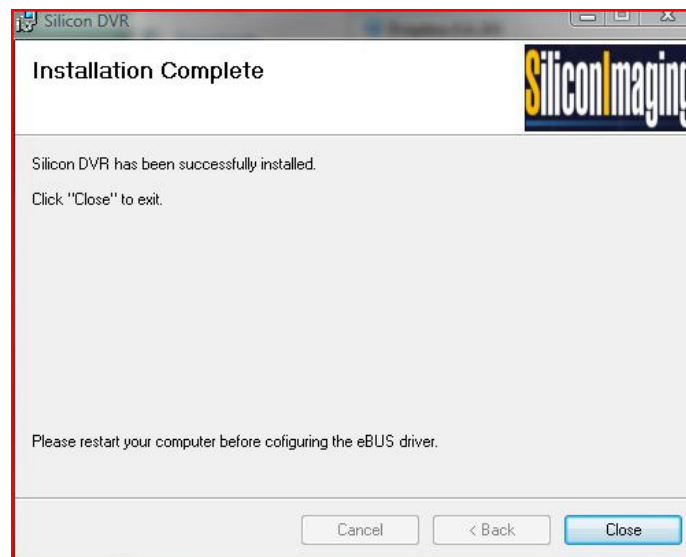
7. Under the “Setup Type” window select the “Complete” choice for installation.



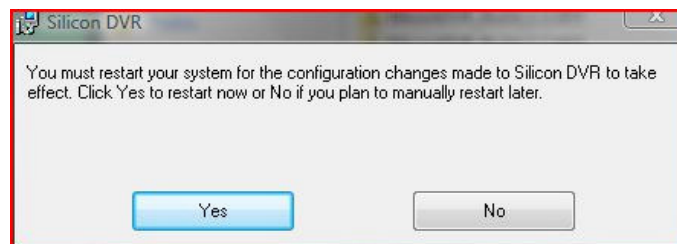
8. Once the iPort Vision Suite has completed installing, the Pleora eBUS driver Suite will launch. Click through the "Next" button until the driver is completed installing.



9. After the eBUS driver has completed installation, the installer will go back to the SiliconDVR installer splash-screen.

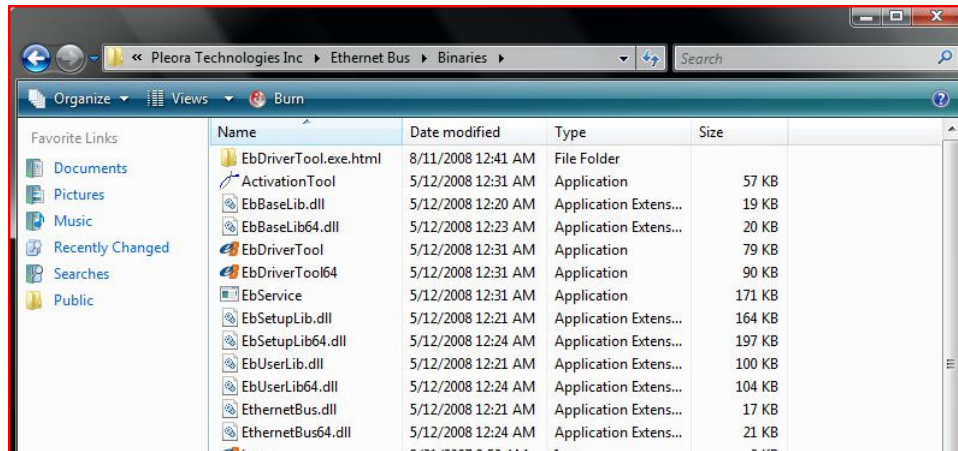


10. Once the SiliconDVR installer has completed, you will be prompted to reboot the computer.

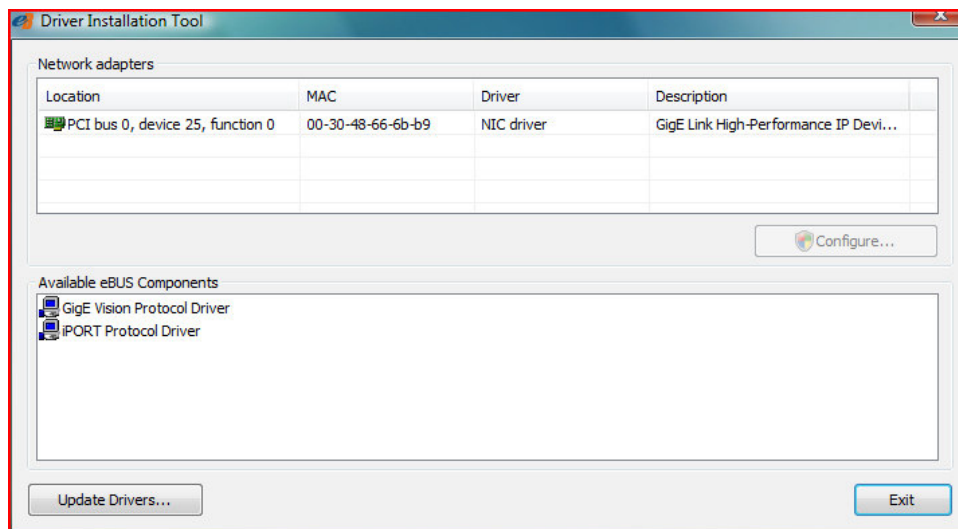


11. Restart the computer.

12. Installing Drivers: After rebooting the computer, go into \Program Files\Pleora Technologies Inc\Ethernet Bus\Binaries\ and launch the EbDriverTool.exe.

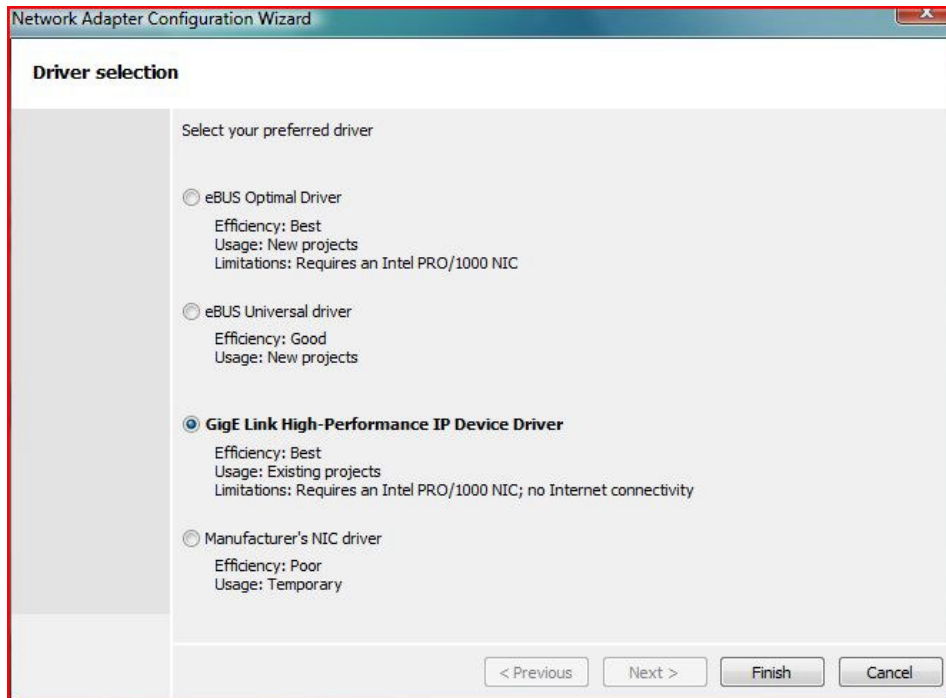


13. Once inside the EbDriverTool, you should see the active NIC on the computer available for installing the eBUS drivers on for use with SiliconDVR. It should be listed as "NIC Driver" under the "Driver" field.



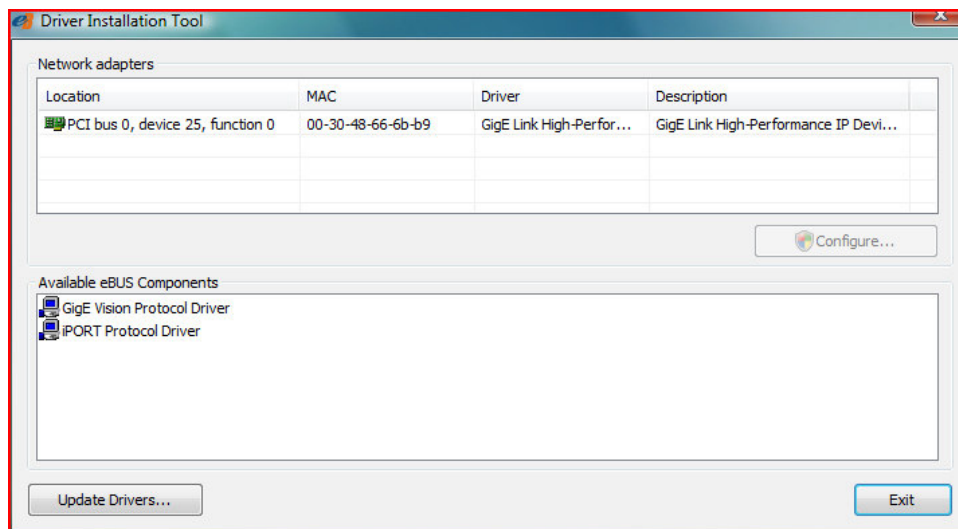
14. Click on the Intel Pro 1000 NIC that will be used with SiliconDVR, and then click on the "Configure" button.

15. Inside the configuration window, choose the "GigE Link High-Performance IP Device Driver" choice.



16. After the driver installs, close the configuration window.

17. The NIC in the main EbDriverTool window should now read "High Performance Driver" in the driver field.



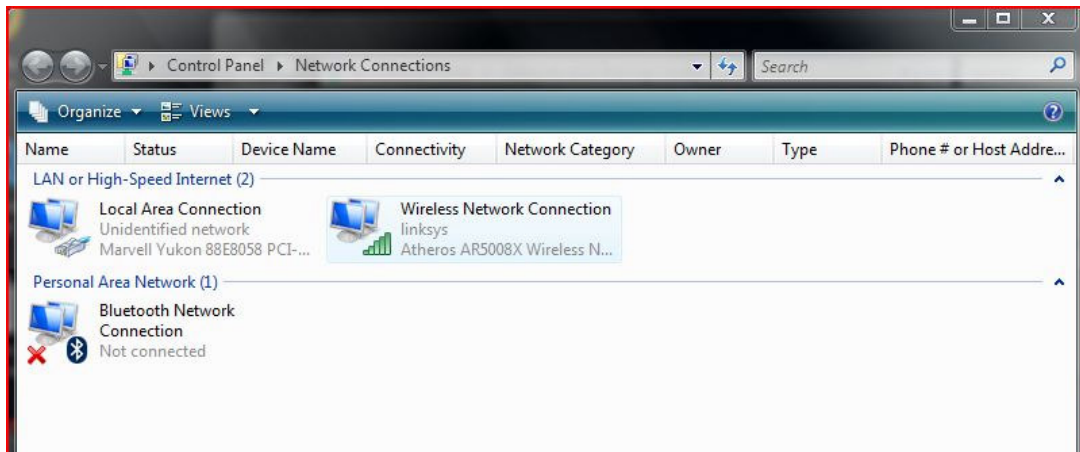
18. Quit the EbDriverTool application and then reboot the computer

19. After reboot, launch SiliconDVR.

3.3 Installing SiliconDVR for Generic NIC's:

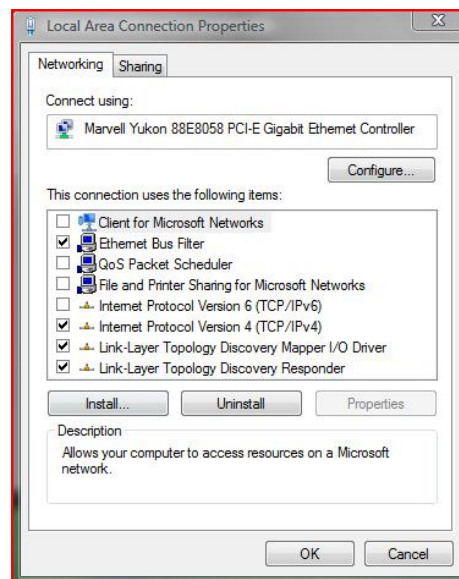
As a pre-installation procedure to optimize the generic NIC and set IP Addresses for use with SiliconDVR, follow these procedures:

1. Go into the Network Connections dialog box by right-clicking on Network Neighborhood and going to "properties".



2. Right-click on the "Local Area Connection" and go to "properties".

3. Turn off the "Client for Microsoft Windows", "QoS Packet Scheduler", "File and Printer Sharing", and on Windows Vista, the "IPv6" option.



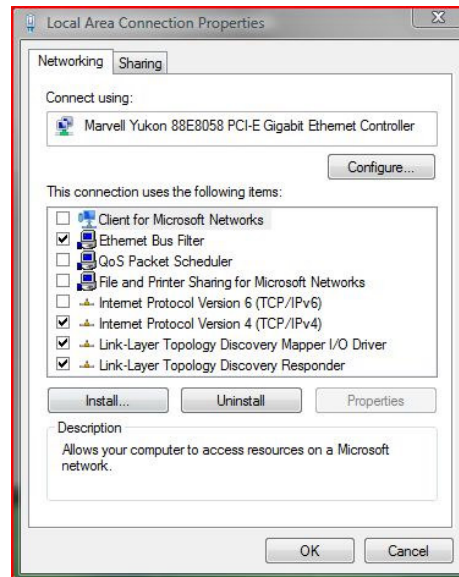
4. Click on the "Internet Protocol Version 4 (TCP/IPv4)" control and then the "properties" button.

5. Disable obtaining and address over DHCP, and manually set the IP address of the NIC to **169.254.143.1**. Then set the subnet mask to **255.255.255.0**.

6. Press "Okay" to close the TCP/IP properties window.

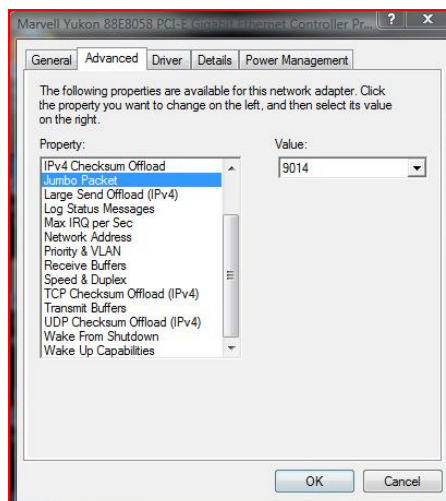
7. Next Press "Okay" to close the "Local Area Connection Properties" window. This will reset the NIC and the IP address of the NIC.

8. Right click-again to re-open the "Local Area Connection" by selecting the "Properties" setting again.

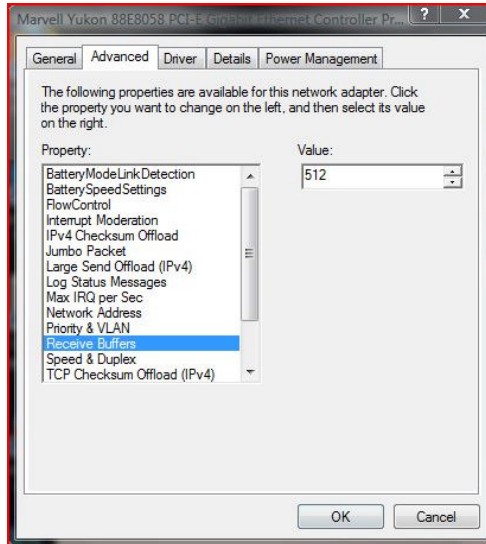


9. Click on the "Configure" button and then in the driver settings window select the "Advanced Tab".

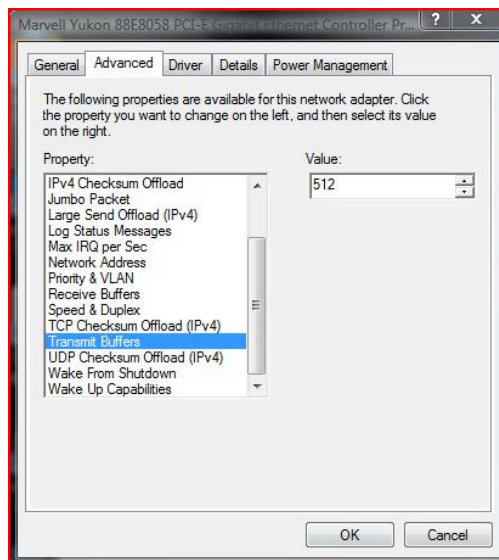
10. Click on the "Jumbo Packets" property and select the 9K packet size.



11. If you NIC provides these properties, next select the "Receive Buffers" property and set the number of buffers top 512.



12. If your NIC provides these properties, select the “Transmit Buffers” property and set the number of buffers to 512.



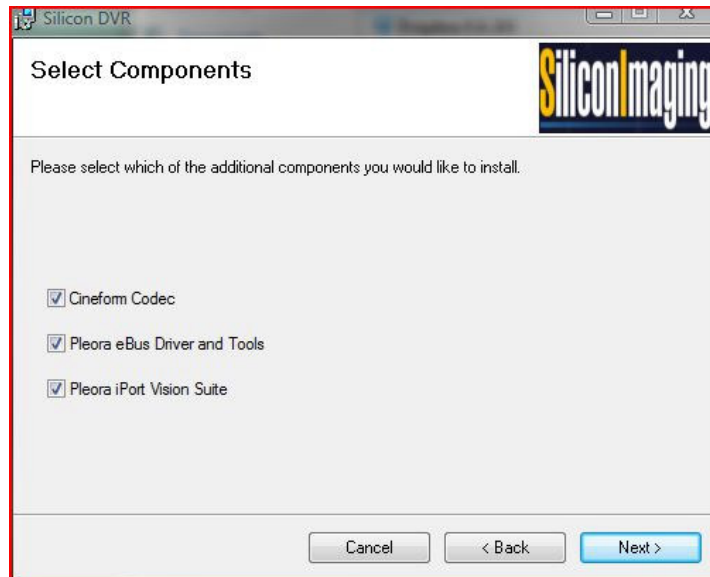
13. Press “Okay” to exit the driver configuration dialog box and then “Okay” again to exit the “Local Area Connection” properties dialog box.



14. Open the SiliconDVR Installer (SiliconDVRSetup1.1). You will be greeted by the installer splash-screen. Press the “Next” button.



15. When you reach the "Select Components" screen, make sure that all three selections for CineForm, Pleora eBUS and Pleora iPort are checked.

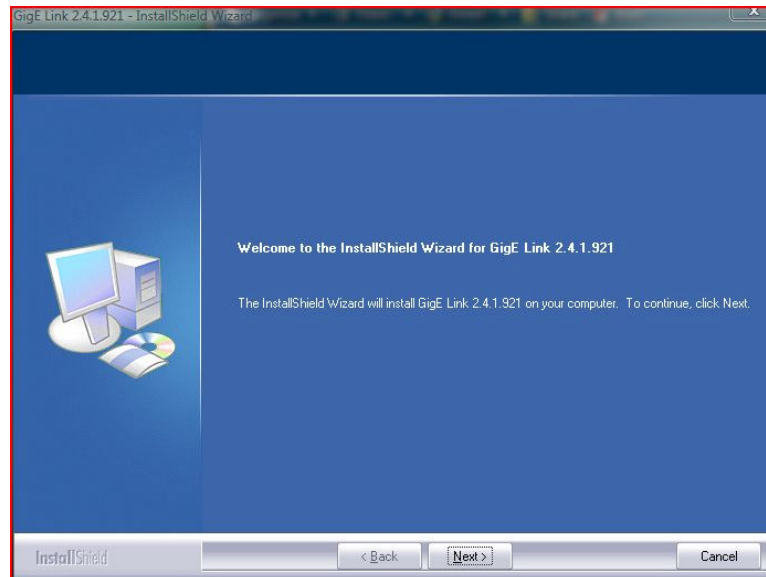


16. Click the "Next" button and proceed with the installation of SiliconDVR.

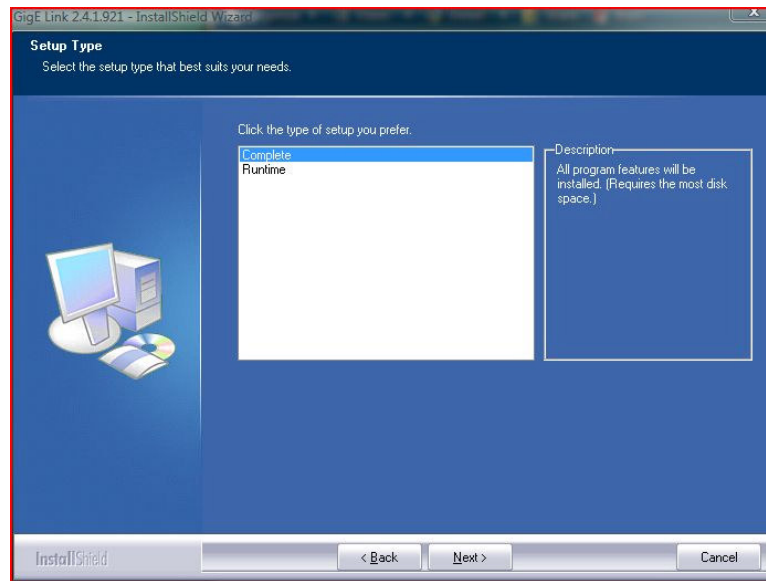
17. After SiliconDVR is installed, the CineForm installer will launch. Click through the “next” button and then when you arrive at the install screen, press the “Install” button.



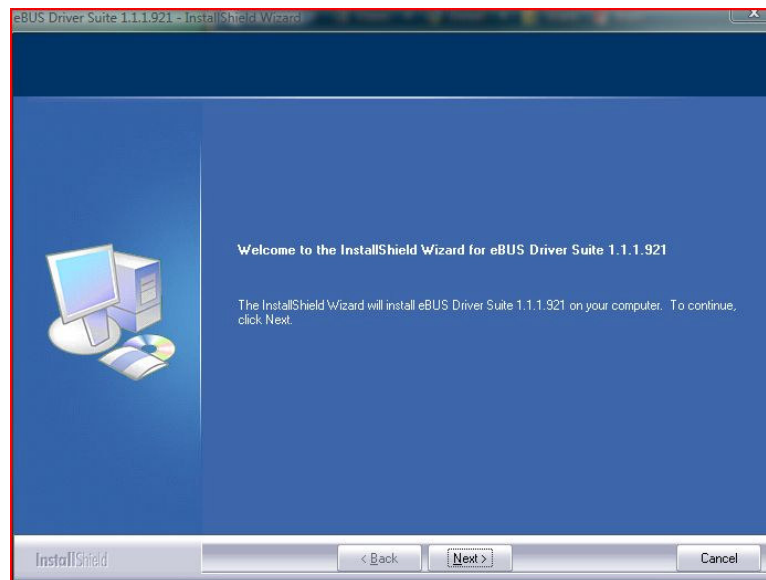
18. After the CineForm Installer completes, the Pleora iPort Vision Suite will be installed. Click the “Next” button.



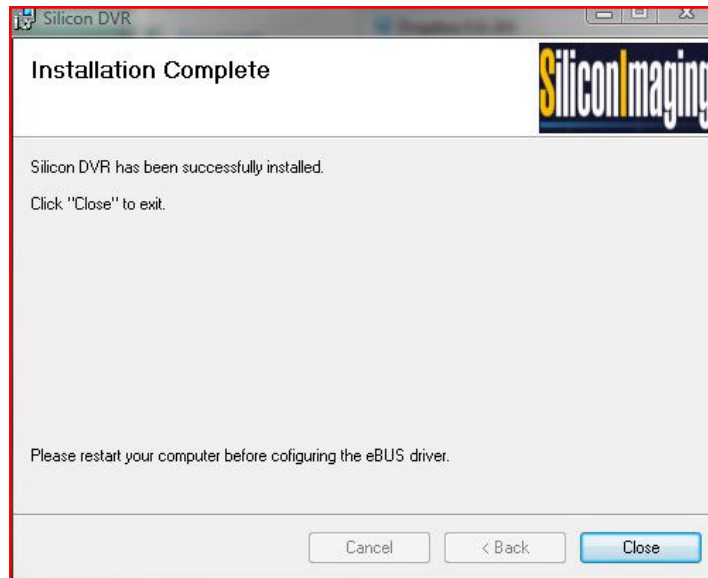
19. Under the "Setup Type" window select the "Complete" choice for installation.



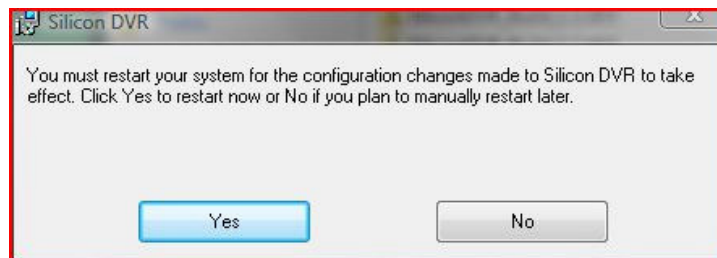
20. Once the iPort Vision Suite has completed installing, the Pleora eBUS driver Suite will launch. Click through the "Next" button until the driver is completed installing.



21. After the eBUS driver has completed installation, the installer will go back to the SiliconDVR installer splash-screen.

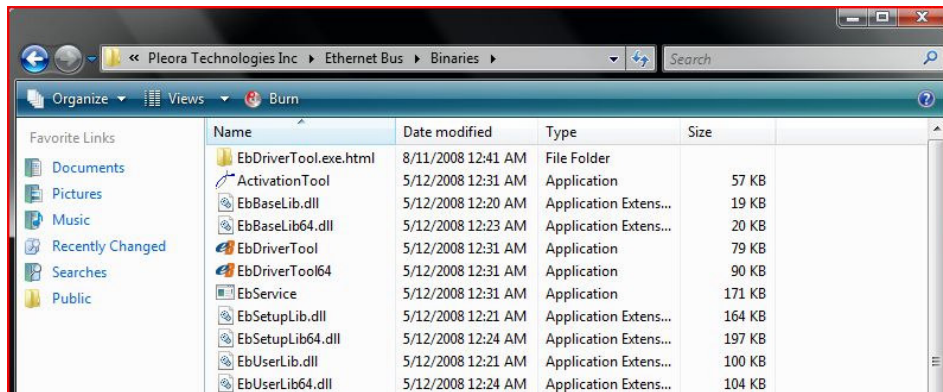


22. Once the SiliconDVR installer has completed, you will be prompted to reboot the computer.

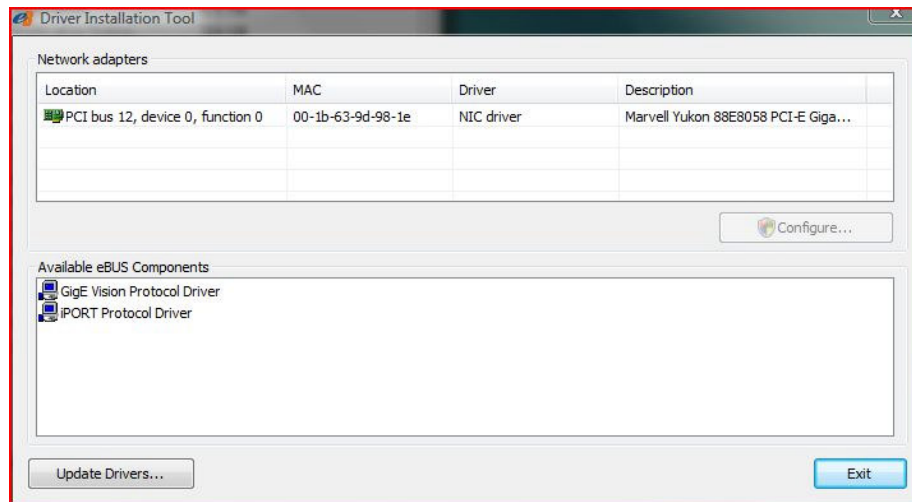


23. Restart the computer.

24. After rebooting the computer, go into \Program Files\Pleora Technologies Inc\Ethernet Bus\Binaries\ and launch the EbDriverTool.exe.

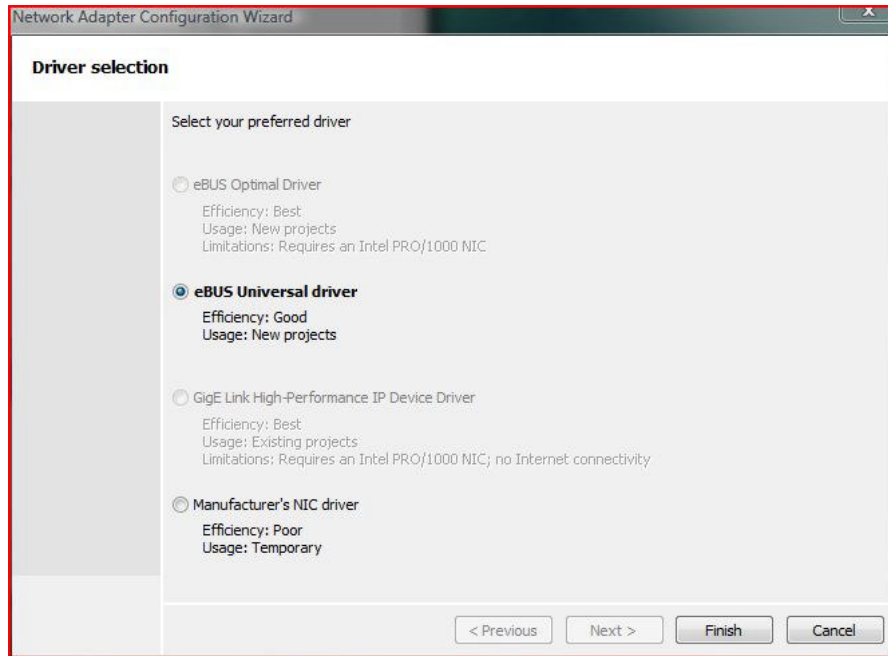


25. Once inside the EbDriverTool, you should see the active NIC on the computer available for installing the eBUS drivers on for use with SiliconDVR. It should be listed as "NIC Driver" under the "Driver" field.



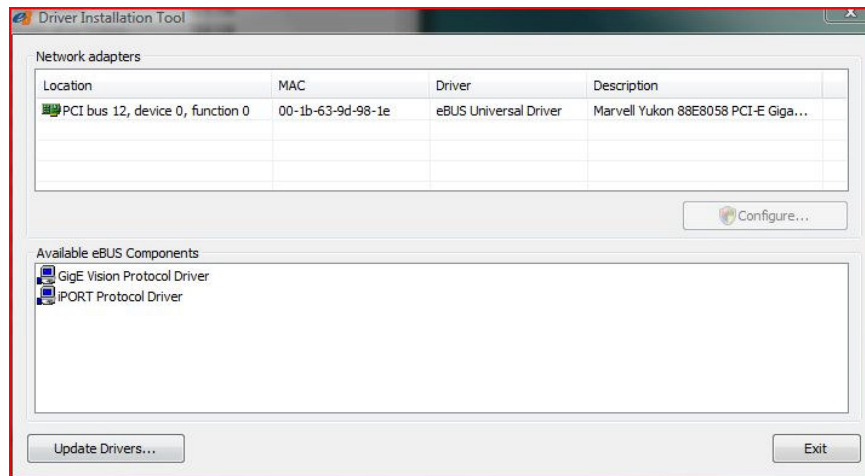
26. Click on the appropriate NIC that will be used with SiliconDVR, and then click on the "Configure" button.

27. Inside the configuration window, choose the “**eBUS Universal Driver**” choice.



28. After the driver installs, close the configuration window.

29. The NIC in the main EbDriverTool window should now read “eBUS Universal Driver” in the driver field.



30. Quit the EbDriverTool application and then reboot the computer

31. After reboot, launch SiliconDVR.

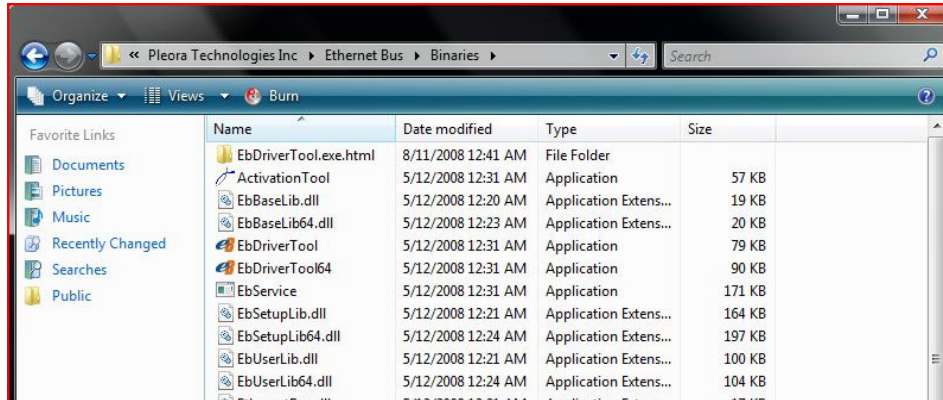
3.4 Uninstalling Previous Versions of SiliconDVR



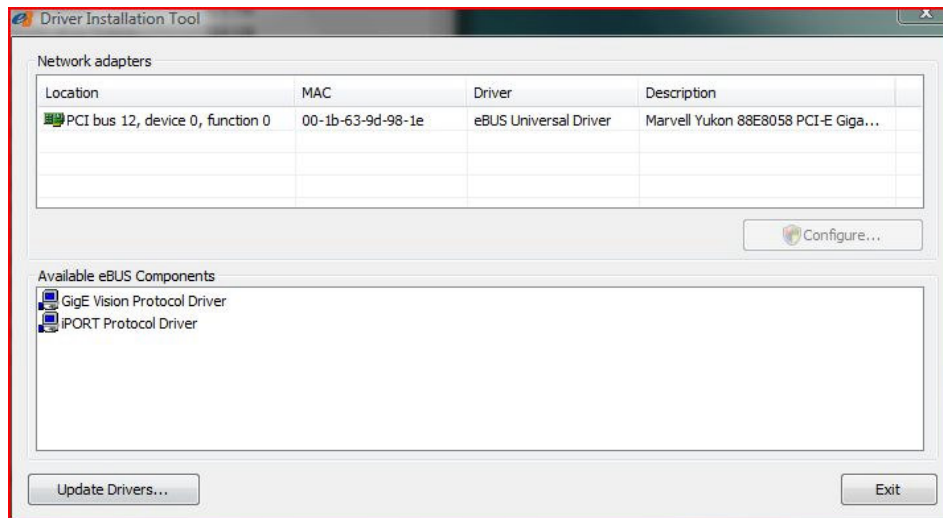
Prior to uninstalling SiliconDVR, check the subdirectories for any user information such as .Look libraries that may be stored there and move them to a safe location.

To uninstall SiliconDVR 1.x:

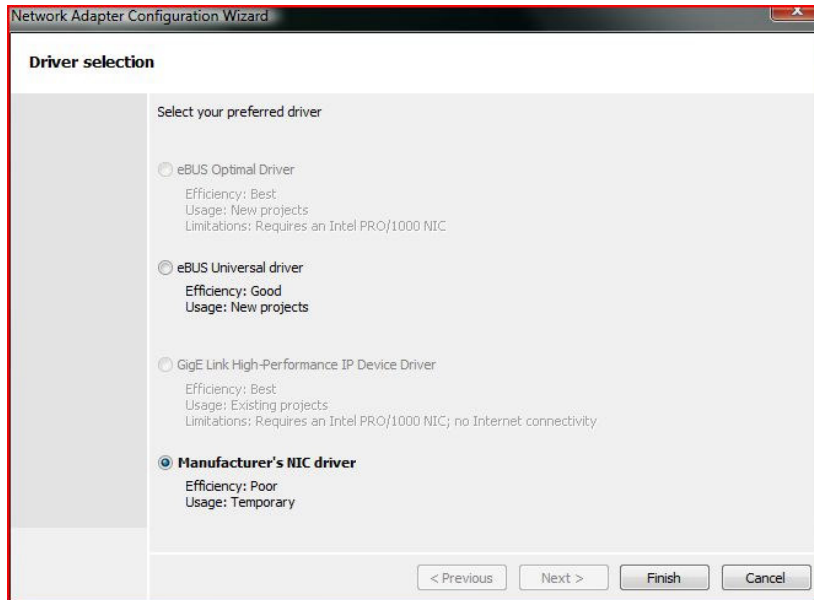
1. Go into \Program Files\Pleora Technologies Inc\Binaries and run the EbDriverTool



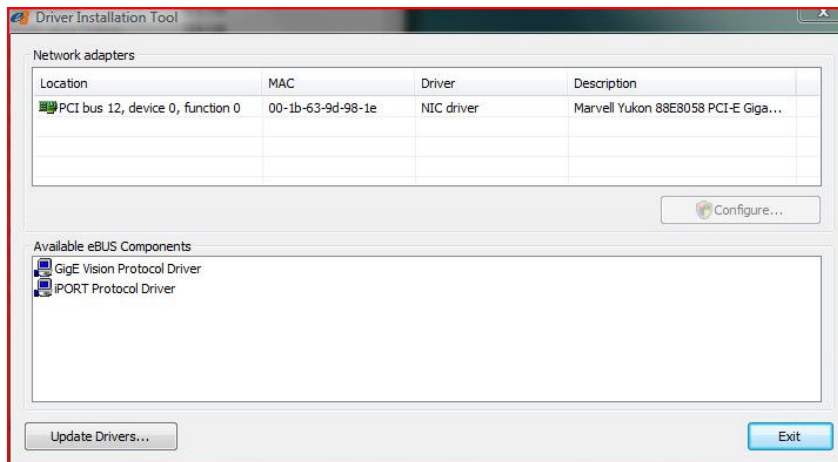
2. In the main window, either the Pro1000 NIC with the High Performance driver or the generic NIC with the eBUS Universal driver should be visible in the "Network Adapters" panel. Select the appropriate NIC and then select the "Configure" button.



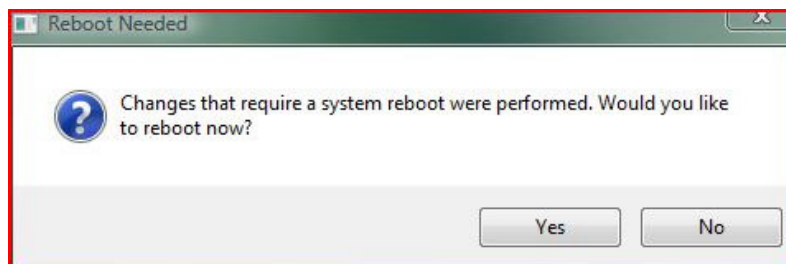
3. In the NIC configuration window select "Manufacturer's NIC Driver".



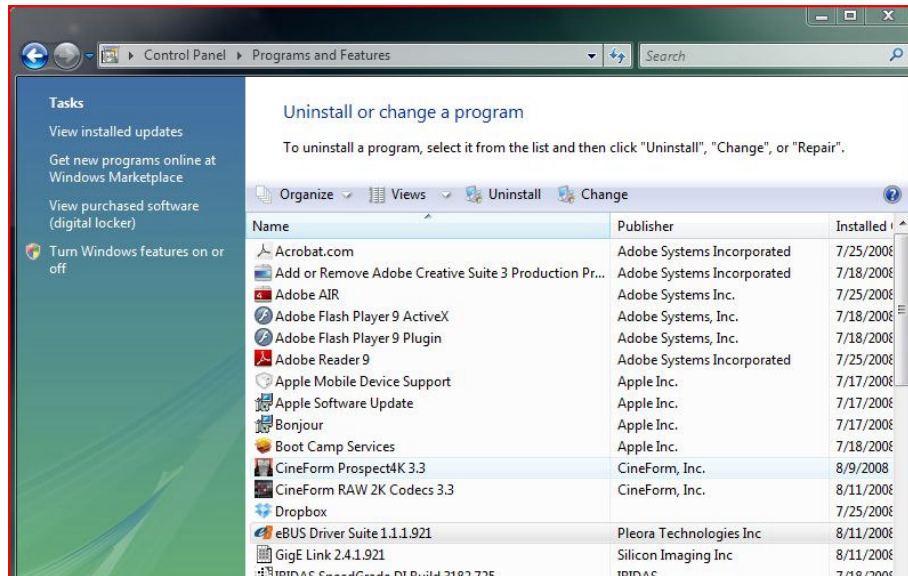
4. Press "Finish". The "Driver" field for either the Pro1000 or the generic NIC (depending on what your machine was running) should now read "NIC Driver" with a description of the manufacturer of the NIC in the "Description" field.



5. Press the "Exit" button to quit the EbDriverTool. You will be greeted by a window that asks you to reboot the system: select "No".



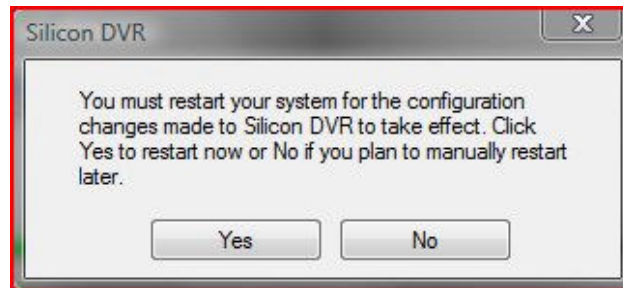
6. Next go into the "Add/Remove Programs" control panel in Windows XP or the "Programs and Features" control panel in Windows Vista. Select the eBUS Driver Suite and then press the "Uninstall" or "Remove" button.



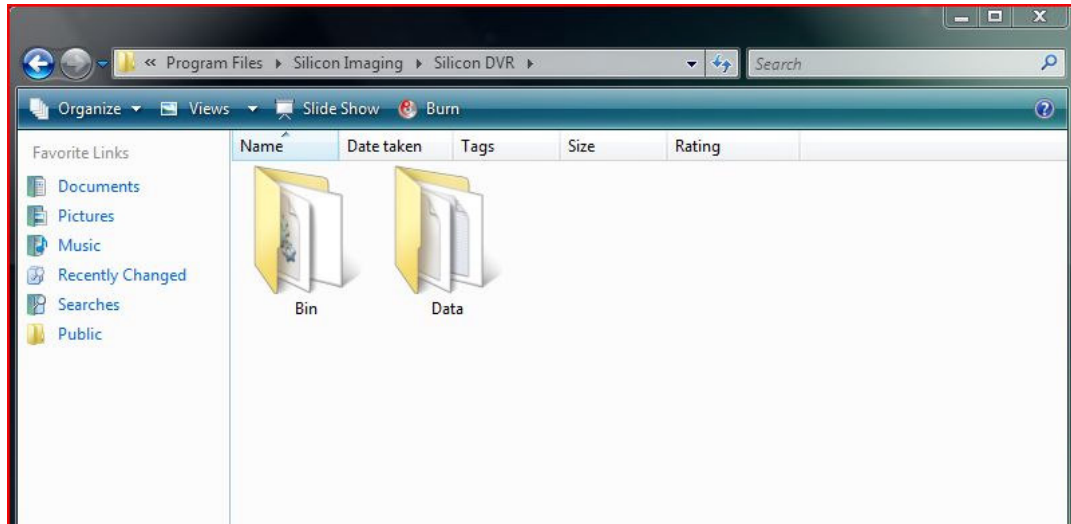
7. After completely removing the eBUS Drivers Suite, next select the GigE Link software and uninstall it.

8. After removing the GigE Link software, next select the SiliconDVR application in the window and uninstall it.

9. After the SiliconDVR uninstaller has completed, you will be greeted by a window asking you to reboot the system. Select "No."



10. After uninstalling SiliconDVR, go back into the "Add/Remove Programs" or "Programs and Features" control panel and uninstall "CineForm RAW Codecs". 11. If it still exists after the uninstall of SiliconDVR, go into \Program Files\Silicon Imaging\Silicon DVR\ folder. Check what folders are remaining after the uninstaller.



11. Delete the **\bin** folder, and then check the **\data** folder for any important files such as custom .Look files or IRIDAS sources files found in both the **\data** and the **\data\iridas\LUTs** folder. Remove any other files remaining and then delete the **\data** folder.

12. Delete the **\Silicon DVR** folder.

13. Reboot the system.

4.0 Troubleshooting FAQ

Why does the right-button mouse-click not stop recording the first time I press it when I started a recording with the external trigger?

Starting a recording with the external trigger button requires two presses of the right-mouse button if the right mouse button is configured for record stop/start. This is per-design and is because the first click of the mouse is a macro that "starts" recording, and so the first click has no action if recording was already triggered from an external source.

I'm trying to delete a large QuickTime or AVI file that is taking up room on my SI-2K. The hard-drive space is not being recovered. What do I do?

SiliconDVR version 1.1 only supports the deletion of files less than 4GB in the current session. In order to delete files that are greater than 4GB, first reboot the camera, and then delete the large 4GB+ files in order to recover the hard-drive space.

A quick rule-of-thumb is that at Quality 4 setting, a 2K/24P file that is 4GB will be around 4 minutes long.

I'm playing back SIV files on a laptop hard-drive and the program is locking up. Why is this happening?

Playing back SIV files from a hard-drive that is not fast enough to maintain real-time throughput can cause SiliconDVR to hang, especially when the SIV file is allowed to loop. SIV playback requires 70-100MB/sec continuous data transfer rates from the hard drive, depending on resolution and frame rate.

What happens to preset timecode when I restart SiliconDVR?

Preset timecode will reset itself back to the original preset time when rebooting SiliconDVR.

Can I "Jam Sync" the SI-2K, or do I have to leave the LTC input device attached to the SI-2K while in LTC Slave mode?

In order to avoid timecode inconsistencies, you must leave any LTC input device, such as the Ambient ALL601, attached to the camera. Removing the device or using it in a "jam-sync" fashion can lead to breaks in the timecode or repeated timecode values across multiple clips.

Why does the right-button mouse-click not stop recording the first time I press it when I started a recording with the external trigger?

Simultaneous triggering of 3D-camera systems using an external trigger button is not accurate when using cable assemblies. For frame-accurate triggering of dual cameras, the Silicon Imaging 3D-sync box is required.

My "Slave" computer system when running a 3D stereo application is randomly dropping frames. What is going on?

Faulty sync-signal cables can cause the "slave" SI-2K MINI head to appear to drop frames. These are actually "missed" frames because they did not receive a frame-trigger event from the "master" camera head. To ensure the reliability of 3D-sync signals from the master-to-slave camera in 3D stereo productions, use the 3D-sync box from Silicon Imaging.

Do the SATA drives on the SI-2K support hot-swapping?

The SATA drives on the SI-2K do not support hot-swapping of the drive cartridges. Doing so risks corruption to the file-system on the hard-drive.

I did a "Set Black" operation, but after an hour or two, I'm seeing dead pixels again on the screen. What's happening?

Temperature shifts on the SI-2K MINI camera head can cause dead or defective pixels that were originally mapped out to re-appear. If this is the case, please re-do the black calibration by covering the lens and pressing SET BLACK. For more information on the SET BLACK process, please visit the Silicon Imaging online FAQ.

I'm trying to get the maximum resolution on the external monitors, but for some reason that seems to "lock up" SiliconDVR. What is happening?

Running the external display on the SI-2K beyond 1280x720, and the viewfinder beyond 800x600, can cause a "slow-interface" condition where SiliconDVR is slow to respond to either touchscreen or mouse-panel input commands. Response times can take up to 30 seconds.

Why do I see RAM buffer overflows when I set my recording resolution for Quadlet or Bilinear?

RAM buffer overflows will occur on the SI-2K when recording in 2K CineForm mode if "Hexlet" display mode is not used for recording (this applied for both 24P and 25P frame-rates). The recommended configuration is to use Quadlet display mode for preview, and Hexlet display mode for recording.

What is the setup for recording high-speed CineForm to disk? How much recording time can I get?

High-speed recording on the SI-2K is only supported in "burst" modes, meaning continuous recording is not possible without overflowing the RAM buffer, which will then properly close the file and end recording. This happened because once the RAM buffer overflows, dropped frames will occur. For continuous high-speed CineForm recording, please attach the SI-2K MINI to a 2.8Ghz or higher Intel Core 2 Duo notebook system.

Is QuickTime or AVI recording performance better under Windows?

AVI encoding performance at the moment is better than QuickTime on the SI-2K. This means that if you are experiencing RAM buffer overflows with QuickTime on the SI-2K, you should record directly to AVI files and then re-wrapping them losslessly to RAW CineForm QuickTime files using CineForm's HDLink utility. Timecode and other metadata is preserved during the re-wrapping process.

I'm waking up my Windows Vista laptop, but when I launch SiliconDVR, I only get a "error connecting to camera" message. What actions do I take to fix this?

In Windows Vista, connecting to a camera on a laptop that is woken up from a "sleep" state will cause a connection error in SiliconDVR. The work-around is to make sure the camera is properly attached before the laptop is brought out of sleep-mode, and then after the laptop is fully up and running, place the laptop back into sleep mode, and then wake it again. After the second sleep-wake cycle SiliconDVR should successfully connect to the SI-2K MINI camera head.

6.0 SiliconDVR End User License Agreement ("EULA")

Thank you for becoming a customer of Silicon Imaging! We're enthused that you have chosen to use our Software Products ("Software") for your Camera Interface. Protection of our intellectual property including all licensed intellectual property is critical to our future business success, and therefore, before you can use this product, you must agree to the following:

Do not install or use Software until you have read and accepted all of the license terms. Permission to use the software is conditional upon you agreeing to the license terms. Installation or use of the software by you will be deemed to be acceptance of the license terms. Acceptance will bind you to the license terms in a legally enforceable contract with Silicon Imaging, Inc.

SOFTWARE LICENSE

This is an agreement between you, the end user ("You" or "Licensee"), and Silicon Imaging Inc. ("Silicon Imaging"). By using the software, You agree to be bound by and to comply with the terms of this agreement ("Agreement").

If You agree to abide by these conditions, please click "Yes". IF YOU DO NOT AGREE TO THE TERMS OF THIS AGREEMENT, PLEASE DO NOT USE THIS SOFTWARE. PROMPTLY REMOVE IT FROM YOUR COMPUTER AND IF IT WAS A PURCHASED COPY, RETURN THE SOFTWARE, MEDIA AND DOCUMENTATION TO US IMMEDIATELY FOR A REFUND IN ACCORDANCE WITH SECTION 3 BELOW.

1. **GRANT OF LICENSE.** Silicon Imaging, as Licensor, grants to You, the Licensee, a non-exclusive right to install a total of up to three machine readable copies of the software program(s) (hereinafter the "Software") on a total of three computers in accordance with the terms contained in this license.
2. **REFUND POLICY.** There is a No Refund policy for purchases of Software or systems with the software for which there is no exception. Please verify features and functionality of Software prior to purchase using a Trial version, if it is available.
3. **LICENSE RESTRICTIONS.** Except as expressly and unambiguously permitted by this Agreement, You shall not sublicense, modify, alter, reverse engineer, disassemble, decompile, or create any derivative work of Software, or remove any copyright notice, watermark, or proprietary legend contained in software.
4. **OWNERSHIP OF SOFTWARE.** Silicon Imaging retains ownership of the copyright, title and ownership of the Software and the written materials provided herewith ("Documentation"), regardless of the form or media in or on which the original and other copies may exist, and Silicon Imaging retains ownership of all intellectual property rights related to the Software.
5. **USE OF SOFTWARE.** Use of the Software is restricted to operation with Silicon Imaging camera hardware and shall not be used with any other capture device.
6. **NO CONVEYANCE OF THIRD PARTY PATENTS.** You agree and acknowledge that no rights or licenses are granted or otherwise conveyed to You with respect to any patents owned or controlled by third parties and in necessary You may need to obtain such rights and licenses directly from such third parties.
7. **UPGRADES.** If this copy of Software is an upgrade from an earlier version, it is provided to You on a license exchange basis. Upon your installation and use of this copy of Software, You agree to voluntarily terminate your earlier EULA and You will not continue to use the earlier version of the Software or transfer it to another person or entity.
8. **USE OF VIDEO SAMPLE FILES LICENSED BY THIRD PARTIES.** You may use video sample files, provided in the Software, if any, which may be licensed from third parties, to demonstrate or complete Your work created by the use of the Software; provided that You may not use the video in any illegal manner and You are not entitled to sublicense or grant to any other party any rights related to the video sample files.

Silicon Imaging does not provide any, and expressly disclaims all, warranty or representation for these video sample files.

9. LIMITED WARRANTY. If the Software is delivered on physical or optical media, Silicon Imaging warrants the media on which the Software is furnished to be free of defects in material and workmanship, under normal use, for a period of thirty (30) days following the date of delivery to You. If there is defect in the media, Silicon Imaging's sole liability shall be to replace the defective media, which has been returned to Silicon Imaging or the supplier with your dated invoice and is shown to be defective. In the event that Silicon Imaging is unable to replace defective media, Silicon Imaging shall at its sole discretion either refund your money upon your termination of this license or replace with the newer version of the same software.

If the Software is delivered by electronic download, no warranty is provided or implied.

EXCEPT ONLY AS EXPRESSLY STATED IN THIS AGREEMENT, THIS SOFTWARE AND DOCUMENTATION ARE PROVIDED WITHOUT WARRANTY OF ANY KIND. FURTHER, SILICON IMAGING DOES NOT WARRANT, GUARANTEE, OR MAKE ANY REPRESENTATIONS REGARDING THE USE, OR THE RESULTS OF USE, OF THE SOFTWARE OR DOCUMENTATION IN TERMS OF CORRECTNESS, ACCURACY, RELIABILITY, CURRENTNESS, OR OTHERWISE. AFTER THE EXPIRATION OF THE INITIAL 30 DAY PERIOD AFTER DELIVERY TO YOU, NONE OF SILICON IMAGING OR ANY OF ITS DEALERS, DISTRIBUTORS, AGENTS OR REPRESENTATIVES SHALL HAVE ANY LIABILITY FOR REPAIR, REPLACEMENT OR OTHER RECOURSE RELATED TO THE SOFTWARE OR ITS DOCUMENTATION.

EXCEPT FOR ANY EXPRESS WARRANTIES CONTAINED IN THIS AGREEMENT, SILICON IMAGING DISCLAIMS ALL WARRANTIES, EITHER EXPRESS OR IMPLIED, RELATING TO THE SOFTWARE, INCLUDING BUT NOT LIMITED TO THE IMPLIED WARRANTIES OF MERCHANTABILITY, FITNESS FOR A PARTICULAR PURPOSE AND NONINFRINGEMENT, REGARDLESS OF WHETHER IT IS MADE BY SILICON IMAGING. SILICON IMAGING DOES NOT WARRANT THAT THE SOFTWARE WILL BE UNINTERRUPTED OR ERROR-FREE. NO ORAL OR WRITTEN INFORMATION OR ADVICE GIVEN BY SILICON IMAGING, ITS DEALERS, DISTRIBUTORS, AGENTS OR EMPLOYEES SHALL CREATE A WARRANTY OR IN ANY WAY INCREASE THE SCOPE OF THIS WARRANTY AND YOU MAY NOT RELY ON ANY SUCH INFORMATION OR ADVICE.

SILICON IMAGING'S ENTIRE LIABILITY AND YOUR EXCLUSIVE REMEDY IS LIMITED TO THE 30-DAY REFUND RIGHT SET FORTH ABOVE. NEITHER SILICON IMAGING NOR ANYONE ELSE WHO HAS BEEN INVOLVED IN THE CREATION, PRODUCTION OR DELIVERY OF THIS PRODUCT SHALL BE LIABLE FOR ANY INDIRECT, CONSEQUENTIAL OR INCIDENTAL DAMAGES (INCLUDING DAMAGES FOR LOSS OF BUSINESS PROFITS, BUSINESS INTERRUPTION, LOSS OF DATA, LOSS OF BUSINESS INFORMATION, OR OTHER PECUNIARY LOSS) ARISING OUT OF THE USE OR INABILITY TO USE SUCH PRODUCT EVEN IF SILICON IMAGING HAS BEEN ADVISED OF THE POSSIBILITY OF SUCH DAMAGES.

IN NO EVENT WILL SILICON IMAGING'S LIABILITY FOR ANY DAMAGES TO YOU OR ANY OTHER PERSON EXCEED THE AMOUNT PAID FOR THE LICENSE TO USE THE SOFTWARE.

9. INDEMNITY. You agree that Silicon Imaging shall have no liability whatsoever for any use You make of the Software. You shall indemnify and hold Silicon Imaging harmless from any claims, damages, liabilities, costs and fees (including reasonable attorney fees) arising from Your use of the Software as well as from Your failure to comply with any term of this Agreement.

10. TERM AND TERMINATION. This Agreement shall continue until terminated as set forth in this section. You may terminate this Agreement at any time. Silicon Imaging may terminate this Agreement immediately if You violate any provision of this Agreement. Any termination of this Agreement shall also terminate the licenses granted hereunder. Upon termination of this Agreement for any reason, You shall destroy and remove from all computers, hard drives, networks, and other storage media all copies of the Software, shall cease all use of the Software, and shall so certify to Silicon Imaging that such actions have occurred. Except for a properly requested refund within the first 30 days after delivery, You shall not be entitled to any refund as a

result of any termination of this Agreement. Sections 2 through 9 and Section 11 shall survive termination of this Agreement.

11. MISCELLANEOUS. This Agreement represents the complete agreement concerning this license between the parties and supersedes all prior agreements and representations between them. This Agreement may be amended only by a writing executed by both parties. If any provision of this Agreement is held to be unenforceable for any reason, such provision shall be reformed only to the extent necessary to make it enforceable. The failure of Silicon Imaging to act with respect to a breach of this Agreement by You or others does not constitute a waiver and shall not limit Silicon Imaging's rights with respect to such breach or any subsequent breaches. Silicon Imaging expressly reserves the right to freely assign this Agreement and to delegate any of its obligations hereunder. This Agreement shall be governed by and construed under New York law as such law applies to agreements between New York residents entered into and to be performed within New York. The sole and exclusive jurisdiction and venue for actions arising under this Agreement shall be the State and Federal courts in Schenectady County, New York; You hereby agree to service of process in accordance with the rules of such courts.

In addition, you acknowledge that the Software is subject to U.S. export jurisdiction. You agree to comply with all applicable international and national laws that apply to these products, including the U.S. Export Administration Regulations, as well as end-user, end-use and destination restrictions issued by U.S. and other governments.