

Power Schottky Rectifier - 10Amp 200Volt

Features

- Low forward voltage drop
- High current capability
- High reliability
- High surge current capability
- Epitaxial construction

Mechanical data

- Case : Molded plastic
- Epoxy : UL 94V-0 rate flame retardant
- Lead : Axial leads, solderable per MIL-STD-202,method 208 guaranteed
- Polarity : Color band denotes cathode end
- Mounting position : Any

Maximum ratings and Electrical characteristics

Parameters		S10L200PB	UNIT	
Maximum Recurrent Peak Reverse Voltage		200	V	
Maximum RMS Voltage		140	V	
Maximum DC Blocking Voltage		200	V	
Maximum Average Forward Rectified Current		10	A	
Peak Forward Surge Current		275	A	
Maximum Instantaneous Forward Voltage	Tc = 25°C	IF = 1A	0.65	V
		IF = 3A	0.75	
		IF = 10A	0.85	
	Tc = 125°C	IF = 1A	0.50	
		IF = 3A	0.60	
		IF = 10A	0.70	
Maximum Average Reverse Current at Rated DC Blocking Voltage	Tc = 25°C	0.05	mA	
	Tc = 100°C	5		
	Tc = 125°C	20		
Typical Junction Capacitance		800	pF	
Typical Thermal Resistance R _{θJA} (Note 1)		35	°C/W	
Operating and Storage Temperature Range		-50 to +150	°C	

Note : 1.Mounted on P.C.B with copper pad size 10mm x 10mm, thickness 0.2mm

December 2013 / Rev.7.0

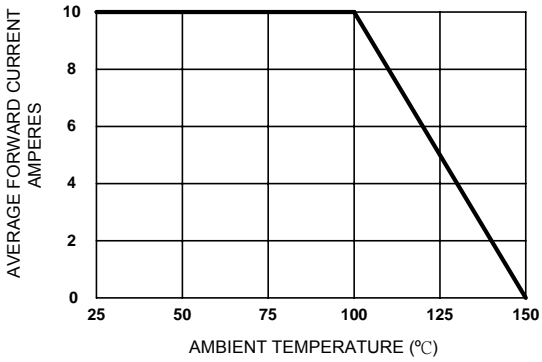


Figure 1. Forward Current Derating Curve

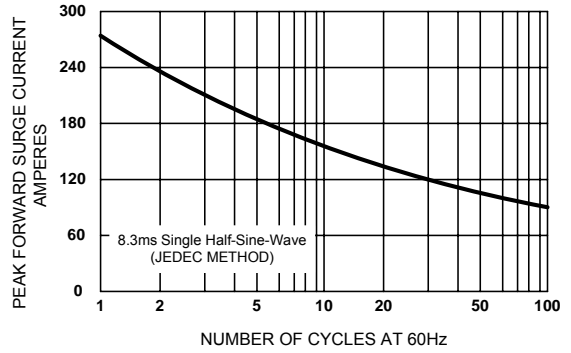


Figure 2. Maximum Non-repetitive Surge Current

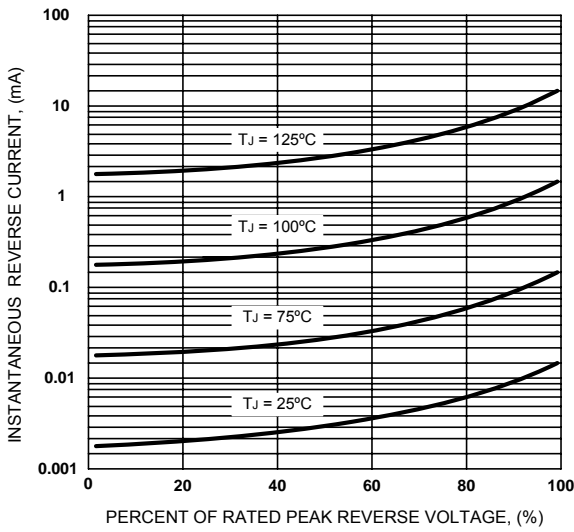


Figure 3. Typical Reverse Characteristics

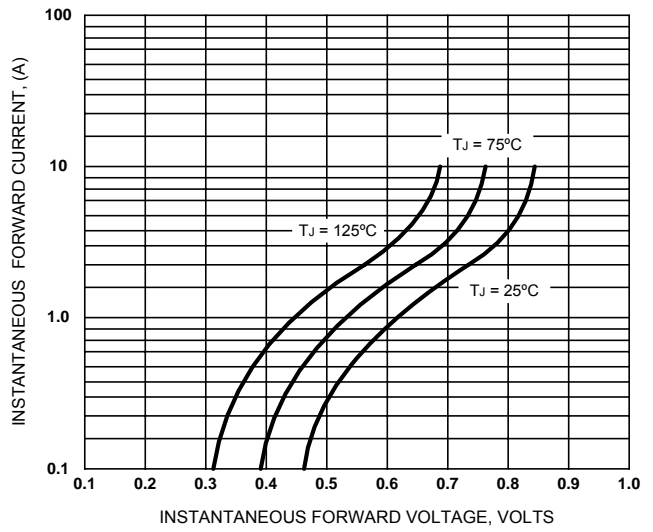


Figure 4. Typical Forward Characteristics

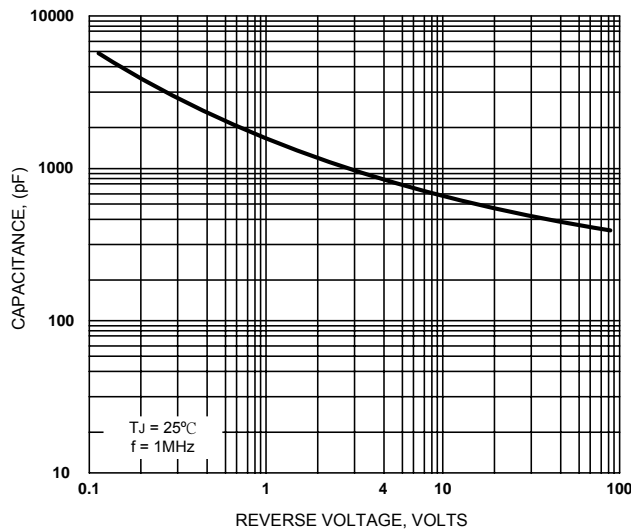
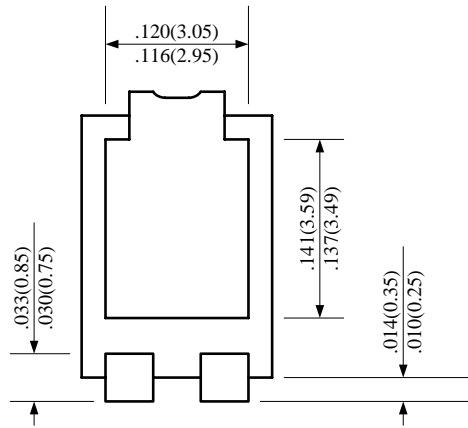
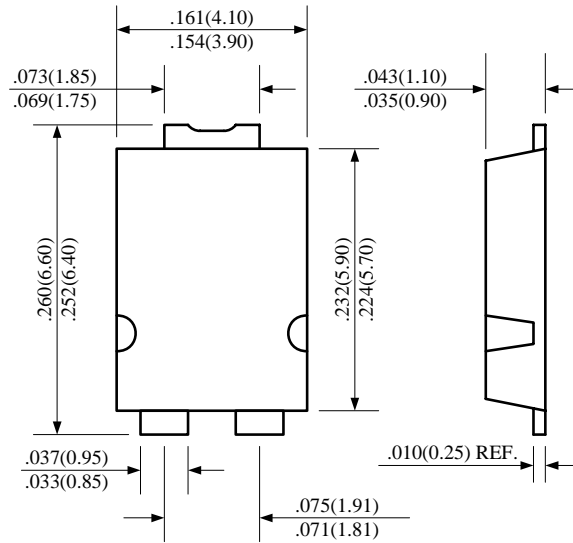


Figure 5. Typical Junction Capacitance

S10L200PB

S10L200PB

T0-277



UNIT : inch(mm)

