

Power Schottky Rectifier - 15Amp 150Volt

Features

- Low forward voltage drop
- High current capability
- High reliability
- High surge current capability
- Epitaxial construction

Mechanical data

- Case : Molded plastic
- Epoxy : UL 94V-0 rate flame retardant
- Lead : Axial leads, solderable per MIL-STD-202,method 208 guaranteed
- Polarity : Color band denotes cathode end
- Mounting position : Any

Maximum ratings and Electrical characteristics

Parameters		S15L150PB	UNIT	
Maximum Recurrent Peak Reverse Voltage		150	V	
Maximum RMS Voltage		105	V	
Maximum DC Blocking Voltage		150	V	
Maximum Average Forward Rectified Current		15	A	
Peak Forward Surge Current		300	A	
Maximum Instantaneous Forward Voltage	Tc = 25°C	If = 1A	0.60	V
		If = 3A	0.70	
		If = 10A	0.80	
		If = 15A	0.85	
	Tc = 125°C	If = 1A	0.45	
		If = 3A	0.55	
		If = 10A	0.65	
		If = 15A	0.70	
Maximum Average Reverse Current at Rated DC Blocking Voltage	Tc = 25°C	0.05	mA	
	Tc = 100°C	5		
	Tc = 125°C	20		
Typical Junction Capacitance		800	pF	
Typical Thermal Resistance R _{θJA} (Note 1)		35	°C/W	
Operating and Storage Temperature Range		-50 to +150	°C	

Note : 1. Mounted on P.C.B with copper pad size 10mm x 10mm, thickness 0.2mm

December 2013 / Rev.7.0

S15L150PB

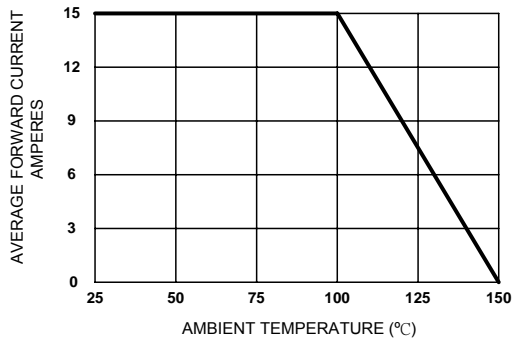


Figure 1. Forward Current Derating Curve

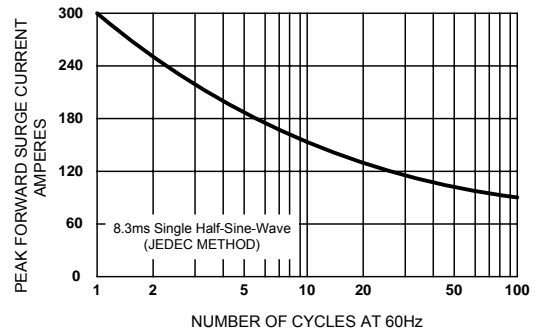


Figure 2. Maximum Non-repetitive Surge Current

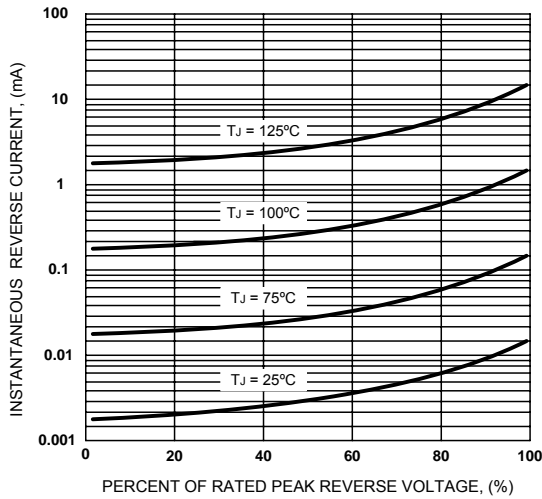


Figure 3. Typical Reverse Characteristics

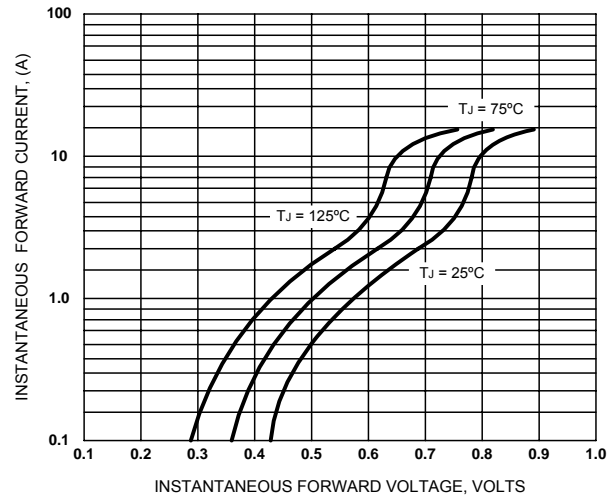


Figure 4. Typical Forward Characteristics

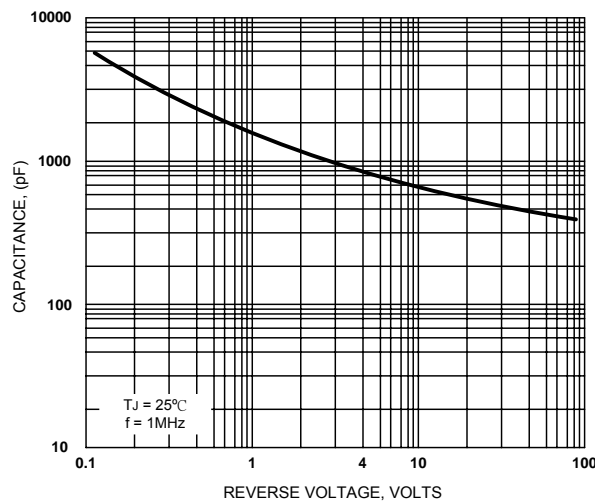


Figure 5. Typical Junction Capacitance



Sirectifier Semiconductor Inc.

U.S.A.: sgc@sirect.com

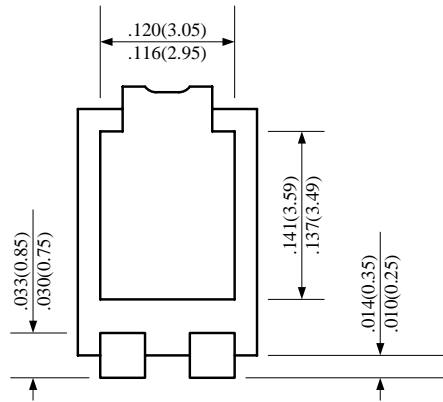
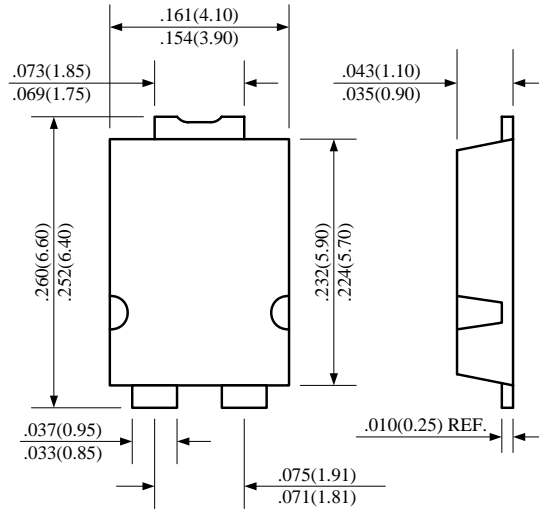
China: st@sirect.com

Taiwan: se@sirect.com

Hong Kong: hk@sirect.com

S15L150PB

T0-277



UNIT : inch(mm)

