

## Power Schottky Rectifier - 15Amp 100Volt

**Features**

- Low forward voltage drop
- High current capability
- High reliability
- High surge current capability
- Epitaxial construction

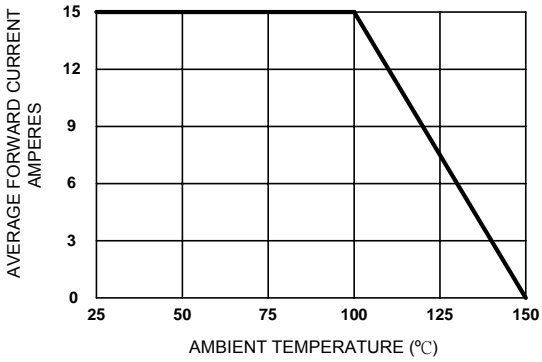
**Mechanical data**

- Case : Molded plastic
- Epoxy : UL 94V-0 rate flame retardant
- Lead : Axial leads, solderable per MIL-STD-202,method 208 guaranteed
- Polarity : Color band denotes cathode end
- Mounting position : Any

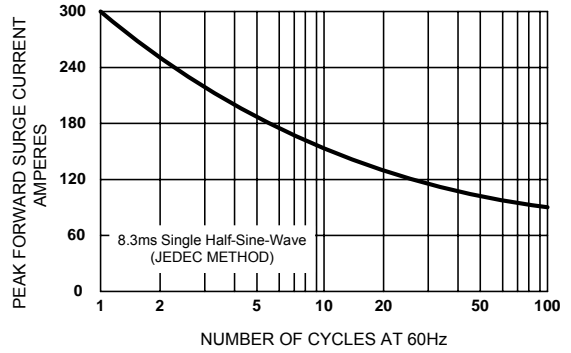
**Maximum ratings and Electrical characteristics**

Parameters		S15L100PB	UNIT	
Maximum Recurrent Peak Reverse Voltage		100	V	
Maximum RMS Voltage		70	V	
Maximum DC Blocking Voltage		100	V	
Maximum Average Forward Rectified Current		15	A	
Peak Forward Surge Current		300	A	
Maximum Instantaneous Forward Voltage	Tc = 25°C	IF = 1A	0.45	V
		IF = 3A	0.55	
		IF = 10A	0.75	
		IF = 15A	0.85	
	Tc = 125°C	IF = 1A	0.30	
		IF = 3A	0.40	
		IF = 10A	0.60	
		IF = 15A	0.70	
Maximum Average Reverse Current at Rated DC Blocking Voltage	Tc = 25°C	0.05	mA	
	Tc = 100°C	5		
	Tc = 125°C	20		
Typical Junction Capacitance		800	pF	
Typical Thermal Resistance R <sub>θJA</sub> (Note 1)		35	°C/W	
Operating and Storage Temperature Range		-50 to +150	°C	

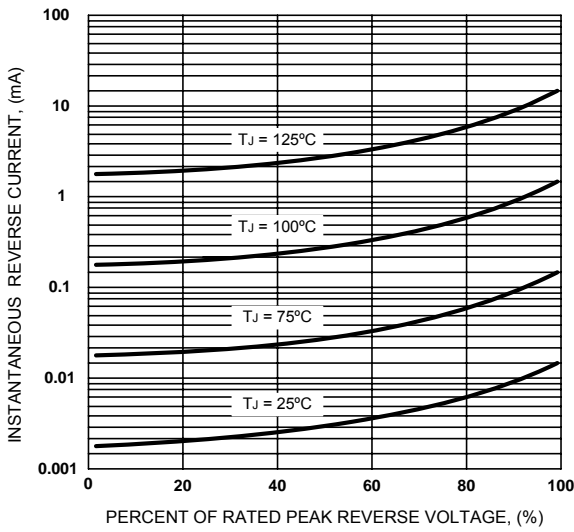
Note : 1.Mounted on P.C.B with copper pad size 10mm x 10mm, thickness 0.2mm



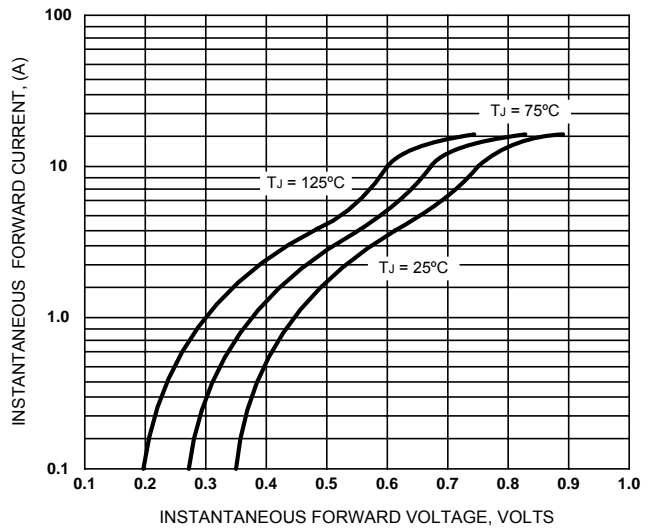
**Figure 1. Forward Current Derating Curve**



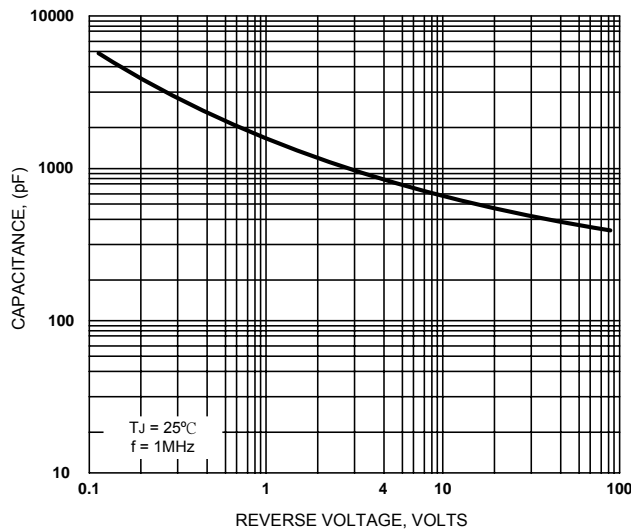
**Figure 2. Maximum Non-repetitive Surge Current**



**Figure 3. Typical Reverse Characteristics**



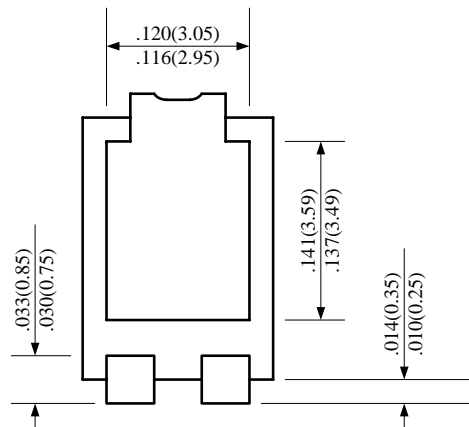
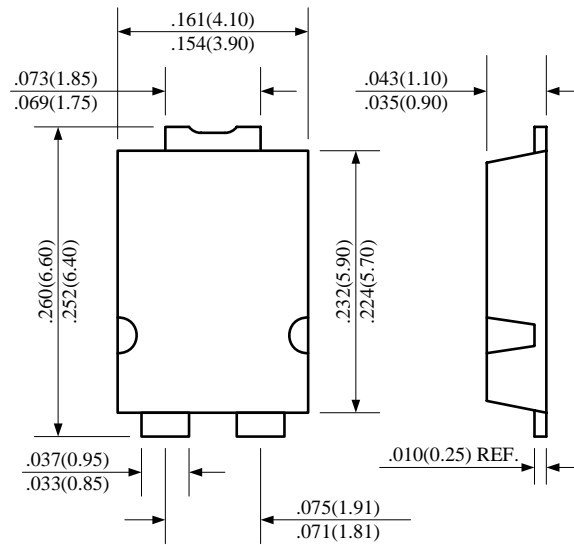
**Figure 4. Typical Forward Characteristics**



**Figure 5. Typical Junction Capacitance**

# S15L100PB

T0-277



UNIT : inch(mm)

