

Power Schottky Rectifier - 15Amp 60Volt

Features

- Low forward voltage drop
- High current capability
- High reliability
- High surge current capability
- Epitaxial construction

Mechanical data

- Case : Molded plastic
- Epoxy : UL 94V-0 rate flame retardant
- Lead : Axial leads, solderable per MIL-STD-202,method 208 guaranteed
- Polarity : Color band denotes cathode end
- Mounting position : Any

Maximum ratings and Electrical characteristics

Parameters		S15L60PB	UNIT	
Maximum Recurrent Peak Reverse Voltage		60	V	
Maximum RMS Voltage		42	V	
Maximum DC Blocking Voltage		60	V	
Maximum Average Forward Rectified Current		15	A	
Peak Forward Surge Current		300	A	
Maximum Instantaneous Forward Voltage	Tc = 25°C	If = 1A	0.34	V
		If = 3A	0.44	
		If = 10A	0.64	
		If = 15A	0.68	
	Tc = 125°C	If = 1A	0.24	
		If = 3A	0.34	
		If = 10A	0.54	
		If = 15A	0.58	
Maximum Average Reverse Current at Rated DC Blocking Voltage	Tc = 25°C	0.5	mA	
	Tc = 100°C	20		
	Tc = 125°C	100		
Typical Junction Capacitance		800	pF	
Typical Thermal Resistance R _{θJA} (Note 1)		35	°C/W	
Operating and Storage Temperature Range		-50 to +125	°C	

Note : 1.Mounted on P.C.B with copper pad size 10mm x 10mm, thickness 0.2mm

December 2013 / Rev.7.0

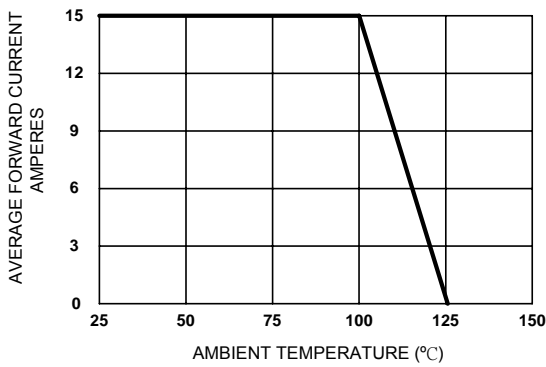


Figure 1. Forward Current Derating Curve

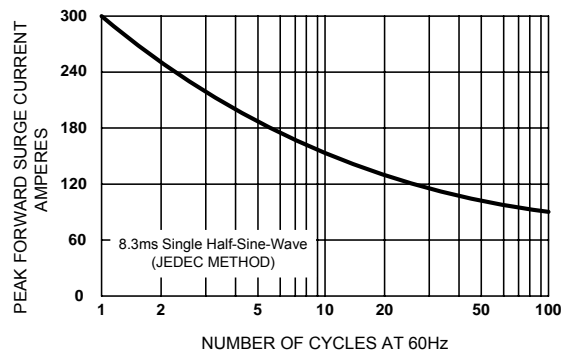


Figure 2. Maximum Non-repetitive Surge Current

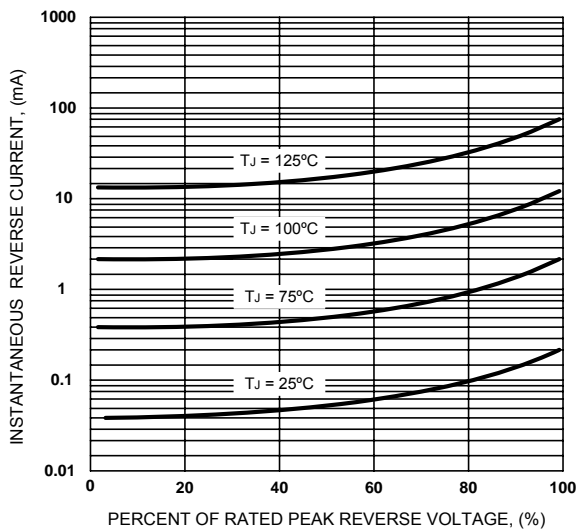


Figure 3. Typical Reverse Characteristics

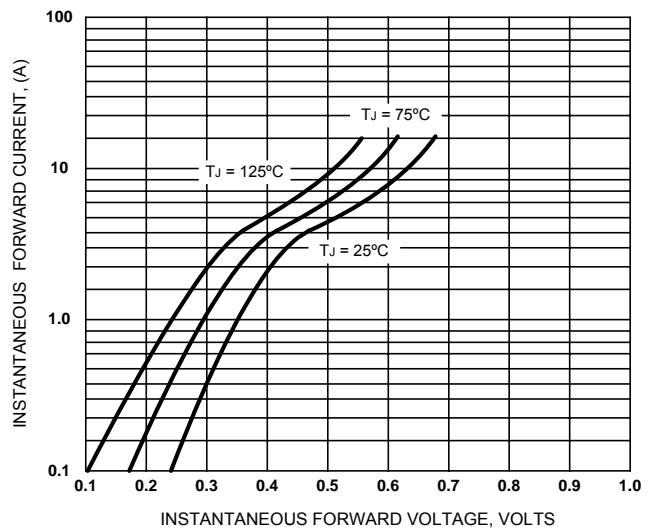


Figure 4. Typical Forward Characteristics

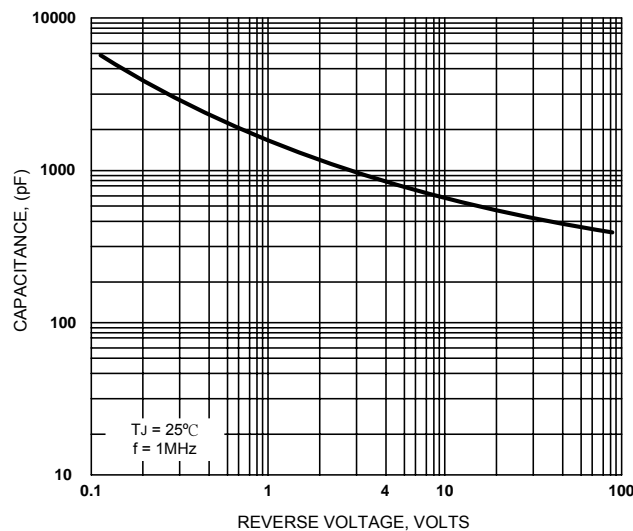
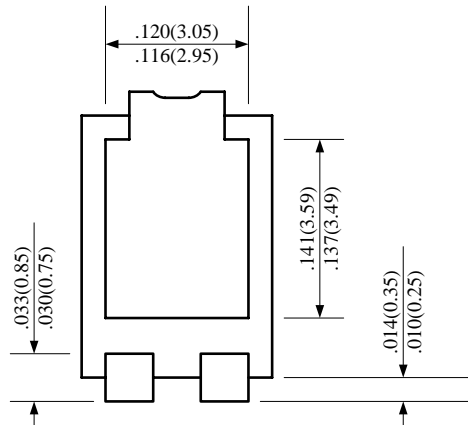
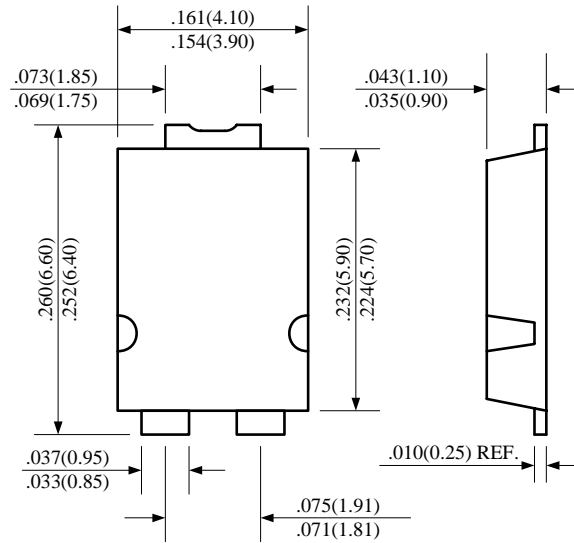


Figure 5. Typical Junction Capacitance

S15L60PB

T0-277



UNIT : inch(mm)

