

## Power Schottky Rectifier - 10Amp 45Volt

**Features**

- Low forward voltage drop
- High current capability
- High reliability
- High surge current capability
- Epitaxial construction

**Mechanical data**

- Case : Molded plastic
- Epoxy : UL 94V-0 rate flame retardant
- Lead : Axial leads, solderable per MIL-STD-202,method 208 guaranteed
- Polarity : Color band denotes cathode end
- Mounting position : Any

**Maximum ratings and Electrical characteristics**

Parameters		S10L45PB	UNIT	
Maximum Recurrent Peak Reverse Voltage		45	V	
Maximum RMS Voltage		32	V	
Maximum DC Blocking Voltage		45	V	
Maximum Average Forward Rectified Current		10	A	
Peak Forward Surge Current		275	A	
Maximum Instantaneous Forward Voltage	Tc = 25°C	IF = 1A	0.32	V
		IF = 3A	0.38	
		IF = 10A	0.48	
	Tc = 125°C	IF = 1A	0.22	
		IF = 3A	0.28	
		IF = 10A	0.38	
Maximum Average Reverse Current at Rated DC Blocking Voltage	Tc = 25°C	0.5	mA	
	Tc = 100°C	20		
	Tc = 125°C	100		
Typical Junction Capacitance		800	pF	
Typical Thermal Resistance R <sub>θJA</sub> (Note 1)		35	°C/W	
Operating and Storage Temperature Range		-50 to +125	°C	

Note : 1.Mounted on P.C.B with copper pad size 10mm x 10mm, thickness 0.2mm

December 2013 / Rev.7.0

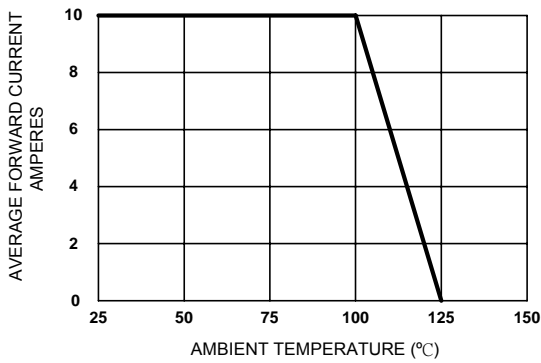


Figure 1. Forward Current Derating Curve

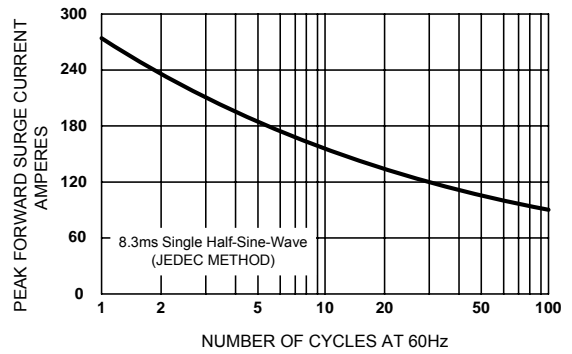


Figure 2. Maximum Non-repetitive Surge Current

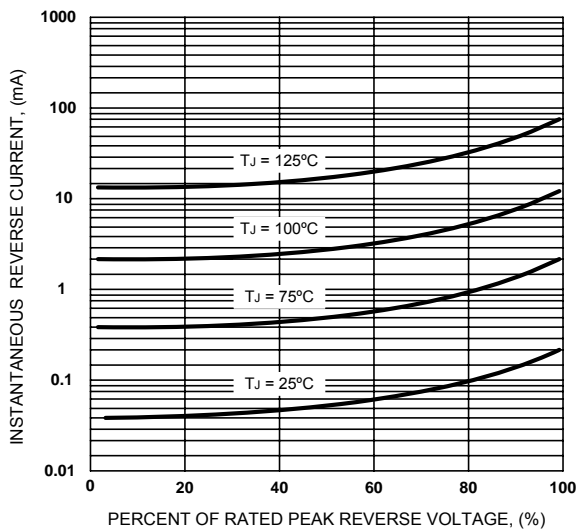


Figure 3. Typical Reverse Characteristics

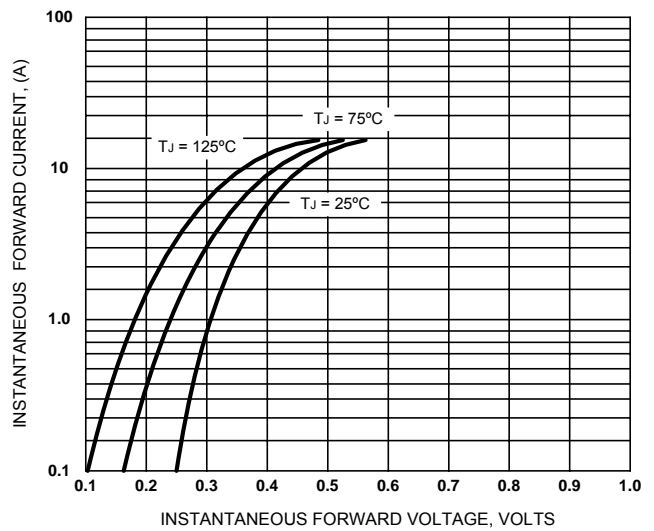


Figure 4. Typical Forward Characteristics

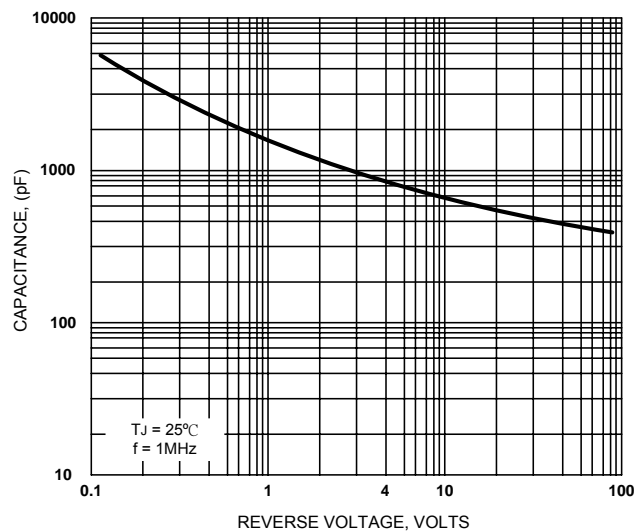
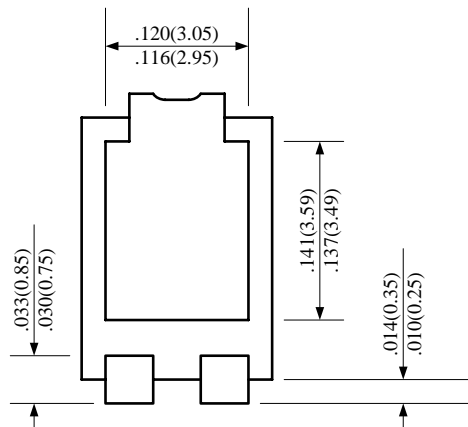
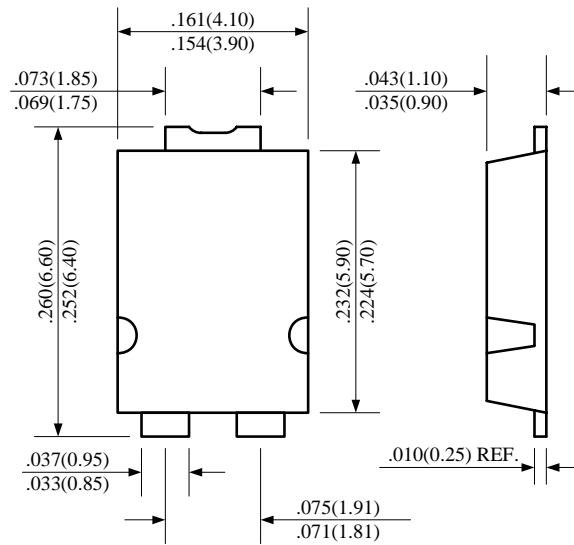


Figure 5. Typical Junction Capacitance

# S10L45PB

T0-277



UNIT : inch(mm)

