



**Safety Technology  
International, Inc.**

# Single Channel Slave Receiver

STI-34098



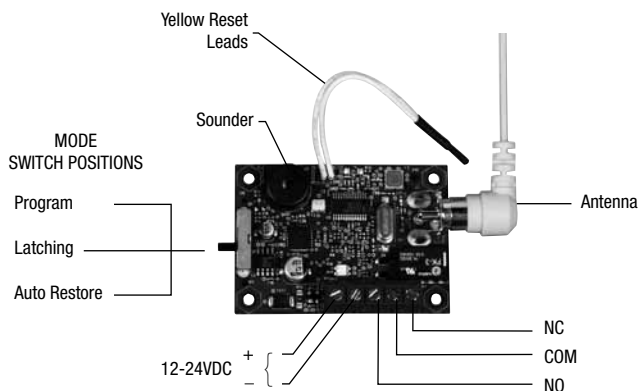
CE



- Works in conjunction with a control panel
- Operates up to 1,000' (line of sight)
- Form "C" relay, 30V AC/DC, 1A
- Form "C" contact enables the transmitter to interconnect with another system
- 12-24VDC operation
- Latching or auto restore mode

We protect the things that protect you.®

Contact Rating (Resistive)	Specifications
- 30V AC/DC, 1A	- Standby Power: 12VDC, 10mA
	- Max Operating: 12VDC, 16mA



## Modes of Operation

PROGRAM	SOUNDER	LED	RELAY
Power ON in program	Start-Up tone will sound	Alternating RED and GREEN	Normal
Activate transmitter	Will double beep	Alternating RED and GREEN	Normal
LATCHING	SOUNDER	LED	RELAY
Power ON in latching (normal)	Start-up tone will sound	Flash GREEN every 2-3 seconds	Normal
Activate transmitter	Will double beep	Solid RED	Switched
Transmitters restores	No sound	Flashing RED	Switched
AUTO RESTORE	SOUNDER	LED	RELAY
Power ON in auto restore (normal)	Start-Up tone will sound	Flash GREEN every 2-3 seconds	Normal
Activate transmitter	Will double beep	Solid RED	Switched
Transmitter restores	No sound	Flash GREEN every 2-3 seconds	Normal

# Instructions

Move switch to program. LED will flash RED and GREEN. Program transmitter into receiver by activating transmitter (see transmitter instructions). Speaker will double beep to confirm programming. Move mode switch to intended mode. Activate transmitter to confirm enrollment.

**To operate in Latching** - Move switch to center position. The LED will turn GREEN and flash every 2-3 seconds.

**When activated in Latching** - Sounder will double beep and LED will turn to solid RED state. When restore signal is received from transmitter LED will flash RED.

## Options for restoring the receiver (LED flashing RED)

- Move slide switch to Auto Restore (bottom position) and then back to Latching.
- Use Keyfob (STI-34106) - press the OFF button and then press the ON button.
- Hard-wire the momentary switch to yellow reset leads on receiver and cycle switch.

**To operate in Auto Restore** – Move switch to bottom position. The LED will flash GREEN every 2-3 seconds. When activated in Auto Restore, LED will go solid RED until the restore transmission is received. Once received, the LED will flash GREEN.

## Keyfob Operation with STI-34098 Receiver

Keyfob has 2 functions:

- ON/OFF – can be used to reset latched receiver to normal after the restore signal is sent.
- RED and WHITE buttons can be used as alert transmitter.
  - RED button sends alert signal.
  - WHITE button sends restore signal.

## Programming Keyfob in Receiver

Move switch to Program Mode. LED flashes alternating RED/GREEN.

**Program ON/OFF reset function** – press ON and OFF buttons at the same time to enroll.

Receiver will beep twice to acknowledge enrollment.

Enrolling the keyfob will delete any previously enrolled keyfob.

**Program RED/WHITE buttons** – while in Program Mode, press the RED and WHITE buttons simultaneously. The receiver will beep twice to acknowledge enrollment. The RED and WHITE buttons function as a transmitter. Programming these buttons will delete previously programmed transmitters.

**Supervisory signal** (3 Types) - Flashing Amber LED (RED and GREEN flashing together) and the sounder will beep once every minute. Signal will show up within 18-24 hours.

1. Tamper on transmitter is open.
2. Low battery signal from transmitter.
3. Transmitter is out of range.

## Notes

- STI-34098 receives signal from only one transmitter.
- Attempting to program a second transmitter will delete original transmitter.
- If receiving a signal from another 433.92 MHz transmitter, the LED will flash GREEN for 3-5seconds.
- Professional installation only.

## Warranty Information

Safety Technology International, Inc. warrants to the original consumer/purchaser that this product shall be free of defects in material and workmanship under normal use and circumstances for a period of one (1) year from the original date of purchase.

Electronic warranty form at [www.sti-usa.com/wc14](http://www.sti-usa.com/wc14).

## Additional Wireless Alert Series Products

STI-34098	Single Channel Slave Receiver	STI-6200WIR	Wireless Fire Extinguisher Theft Stopper
STI-34099	Single Channel Slave Receiver Case	STI-6200WIR4	Wireless Fire Extinguisher Theft Stopper w/Receiver
STI-V34104	4-Channel Voice Receiver	STI-6400WIR	Wireless Exit Stopper Door Alarm
STI-34108	8-Channel Receiver	STI-6400WIR4	Wireless Exit Stopper Door Alarm with Receiver
STI-34188	8-Zone Relay Board	STI-6517A	Stopper Station Shield with Sound
STI-34101	Solar Powered Driveway Monitor Sensor	STI-6517B	Stopper Station Shield with Sound and Transmitter
STI-34151	Battery Powered Driveway Monitor Sensor	STI-6517C	Stopper Station Shield with Wireless Transmitter
STI-34201	Wireless Mailbox Alert Sensor	STI-6517D	Wireless Stopper Station Shield with Button Sound and Transmitter
STI-34301	Wireless Garage Sentry Sensor	STI-30104	Lamp Controller
STI-34401	Wireless Universal Alert Sensor	STI-30105	Extended Antenna
STI-34501	Wireless Door Entry Alert® Sensor	STI-34105	Voltamax 12VDC (500mA) Power Supply
STI-34601	Wireless Doorbell Button	STI-34106	Keyfob
STI-34701	Indoor Wireless PIR	STI-34109	Repeater
STI-34752	Outdoor Wireless PIR	STI-34188	8-Zone Relay Board

### Important Notice

This product has been tested and complies with the specifications for a Class B digital device, pursuant to Part 15 of the FCC Rules. These limits are designed to provide reasonable protection against harmful interference in a resident installation. This equipment generates, uses, and can radiate radio frequency energy and, if not installed and used according to the instructions, may cause harmful interference to radio communications. However, there is no guarantee interference will not occur in a particular installation. If this equipment does cause harmful interference to radio or television reception, which is found by turning equipment on and off, the user is encouraged to try to correct the interference by one or more of the following measures:

- Reorient or relocate the receiving antenna.
- Increase the separation between the equipment and devices.
- Connect the equipment to an outlet other than the receiver's.
- Consult a dealer or an experienced radio/TV technician for assistance.

Operation is subject to the following two conditions: (1) this device may cause interference, and (2) this device must accept interference, including interference that may cause undesired operation of the device. Changes or modifications not expressly approved by Safety Technology International, Inc. could void your authority to operate this equipment.

To reduce potential radio interference to other users, the antenna type and its gain should be chosen that the equivalent isotropically radiated power (e.i.r.p.) is not more than that permitted for successful communication.

This product meets the applicable industry Canada Technical Specifications.

Le présent matériel est conforme aux spécifications techniques applicables d'Industrie Canada.

When installed without the STI-34099 case, STI highly recommends that the receiver is installed inside a panel enclosure where it will not be subjected to direct electro static discharge (ESD) and that appropriate handling is used to minimize ESD during installation process.

This device is a wireless receiver intended for home and office use in all EU and EFTA member states.



## Safety Technology International

### USA - Headquarters

2306 Airport Rd • Waterford, MI 48327, USA  
Phone: 248-673-9898 • Fax: 248-673-1246  
info@sti-usa.com • www.sti-usa.com

### European Office

Taylor House • 34 Sherwood Road • Bromsgrove  
Worcestershire • B60 3DR • England  
Tel: 44 (0) 1527 520 999 • Fax: 44 (0) 1527 501 999  
E-mail: info@sti-emea.com • Web: www.sti-emea.com