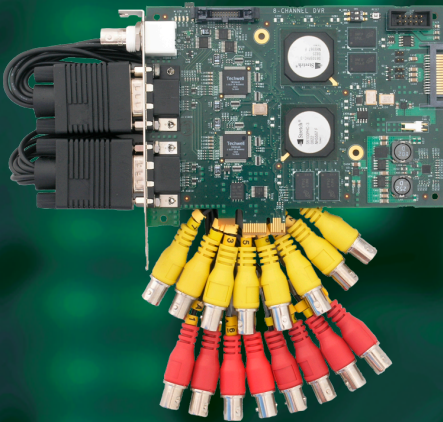


VRC6008 H.264 PCIe DVR Add-in Card

8 Channels of D1, 240fps
Multiple CODECs, Multi-Stream Support
Encode and Decode



■ Complete Solution

- Intelligent Encoder with Constant Quality Modes
- Embedded Analytics for Efficient Compression
- Reduced Storage and Operating Costs

■ See the Entire Picture

- Full D1/4CIF Resolution in Real Time
- True H.264 Encoding — Compatible with Industry Standard Players
- High Quality Video Processing

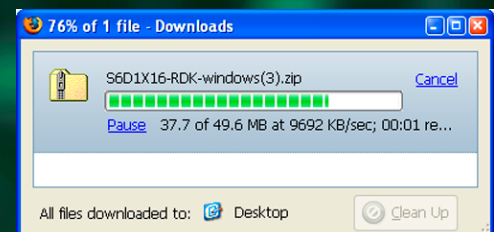


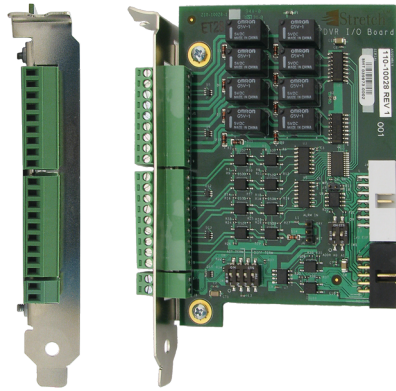
■ Fast Time-to-Market

- Use Your Current DVR Software
- Firmware Preconfigured to Deliver Optimal System Performance
- Card and Cables FCC and CE Certified

■ Future-Proof

- Software Upgradable in the Field
- Simple Transition to New Features and Standards
- No More Obsolete Inventory





Alarm I/O Daughter Card



8-BNC Audio Cable



8-BNC Video Cable

Specifications	
Input Type	Two DB15 HD Connectors
Video Inputs	8 Channels NTSC/PAL
Audio Inputs	8 Channels
Maximum Input Video Resolution	D1 (720 x 480 @ 30fps NTSC) (720 x 576 @ 25fps PAL)
Recording Video Resolution	Full D1 (720 x 480 NTSC) (720 x 576 PAL) CIF (360 x 240 NTSC) (360 X 288 PAL) QCIF (180 x 120 NTSC) (180 x 144 PAL)
Video Compression Format	H.264, MPEG4, MJPEG Supported compression modes: VBR, CBR, Constant Quality Ability to dynamically control frame rate and resolution using embedded analytics
Recording Rate at Full D1 Resolution	240fps NTSC, 200fps PAL
Audio Recording Format	G.711 (8K samples per second)
Video Output	Analog spot monitor out (720 x 480 NTSC) (720 x 576 PAL) Direct selection of input video channel
Form Factor	PCIe short form-factor PC add-in card Dimensions (in mm): 143.5 (W) x 96 (H)
Video Preprocessing	De-interlacing (NTSC and PAL interlaced source) User-defined captioning overlays
Embedded Analytics	Motion detection Blind and tamper detection Night detection
Regions of Interest	User-selectable regions of interest to target analytics
Privacy Regions	User-selectable privacy regions
Trigger Inputs	8 isolated inputs (available on accessory daughter card) 8 alarm relay outputs (available on accessory daughter card)
Regulatory	
Regulatory Certification	FCC, CE
Minimum System Configuration	
Processor	Application-dependent (Dual-core P4 > 2GHz recommended)
Memory	Application-dependent (1GB recommended)
Interface	One available PCIe slot
Operating System Support	Windows XP Linux

Stretch Inc.

1322 Orleans Drive
Sunnyvale, CA 94083
tel 408.543.2700 • fax 408. 747.5736
www.stretchinc.com

All information contained in this document is subject to change without notice.
For more information, visit our web site at www.stretchinc.com
© 2008, Stretch Inc. All rights reserved. Stretch, the Stretch logo and
Extending the Possibilities are registered trademarks of Stretch Inc.