

**ENGINEERING CHANGE BULLETIN # 10014**

**.156” Pitch Male Connector Design Improvement**

**Date Effective:** 10/29/12

**Part Number:**

\_\_M\_\_MMR(MN)\_, (Dwg# 10074)

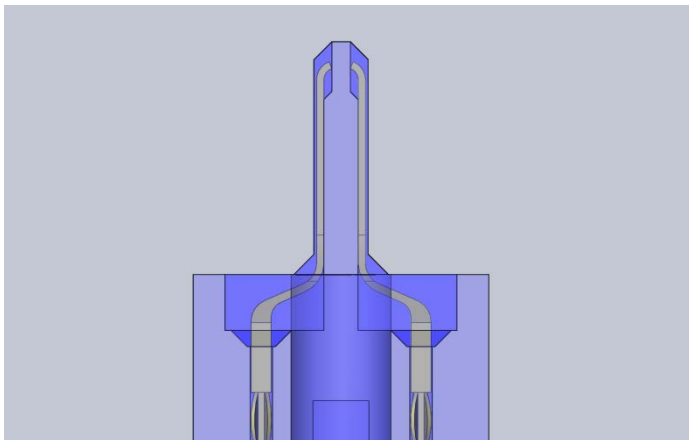
\_\_M\_\_MMW(MS, MM)\_, (Dwg# 10075)

\_\_M\_\_MMA(MV, MB, MD, MJ, MK)\_, (Dwg# 10076)

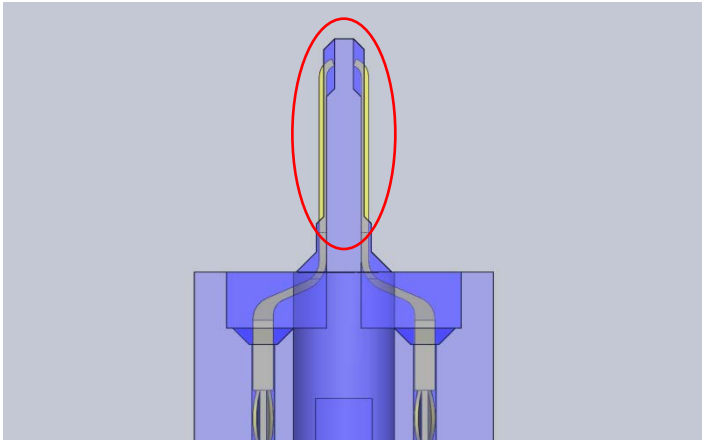
**Explanation of design change:**

Removed plastic material that projected above contact area to improve mating contact resistance and to eliminate the possibility of intermittent contact between male and female connectors.

Before



After



**Change impacts for fit, form, and function are:** No.

**Existing parts will remain active for purchase:** Yes.

**New or revised parts are interchangeable to the previous part applications?** Yes.

**Engineering Approval:**

Truong Tran



(Signature)

**Distribution:** Sales/Purchasing/Manufacturing/Quality Assurance/Document Control/Technical Support/Customer