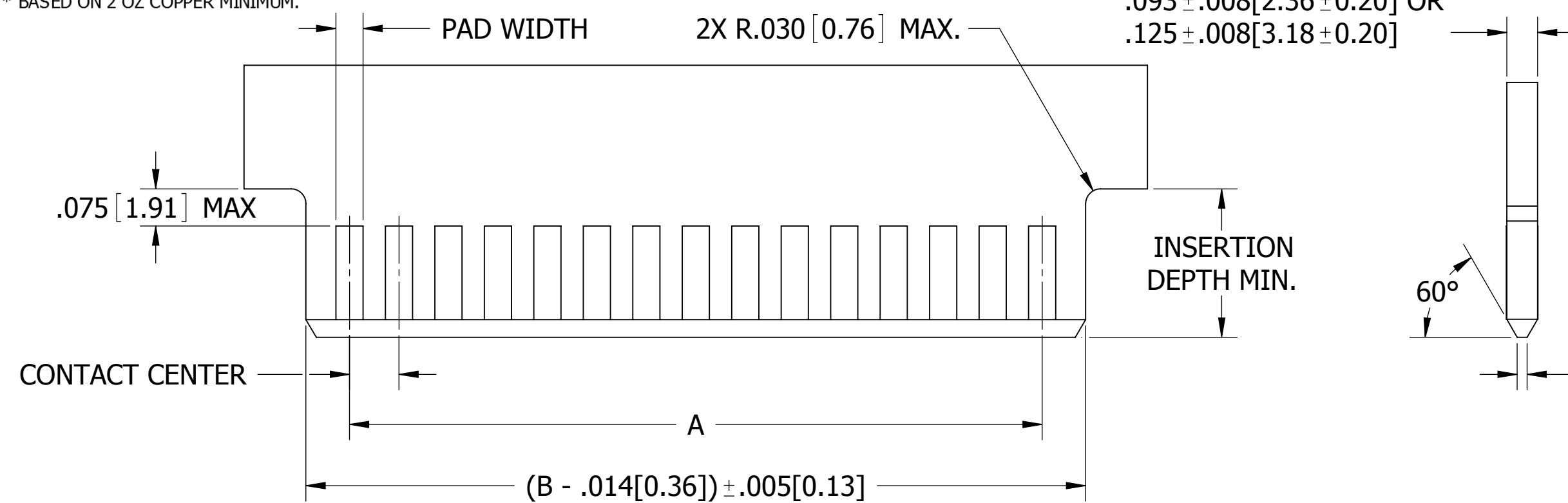


NOTE: REFER TO CATALOG FOR 'A' AND 'B' DIMENSIONS.

CONTACT CENTERS		MAXIMUM PAD WIDTH ( INCH )**							
		.431[10.95] BODY HEIGHT		.610[15.49] BODY HEIGHT		.720[18.29] BODY HEIGHT		.915[23.24] BODY HEIGHT	
INCH	MM	INCH	MM	INCH	MM	INCH	MM	INCH	MM
0.039	1.00	N/A	N/A	0.030	0.76	N/A	N/A	0.030	0.76
0.050	1.27	N/A	N/A	0.040	1.02	N/A	N/A	0.040	1.02
0.100	2.54	0.070	1.78	0.070	1.78	N/A	N/A	N/A	N/A
0.125	3.18	0.100	2.54	0.090	2.29	0.100	2.54	N/A	N/A
0.150	3.81	N/A	N/A	0.090	2.29	0.120	3.05	N/A	N/A
0.156	3.96	0.120	3.05	0.090	2.29	0.120	3.05	N/A	N/A

\*\* BASED ON 2 OZ COPPER MINIMUM.

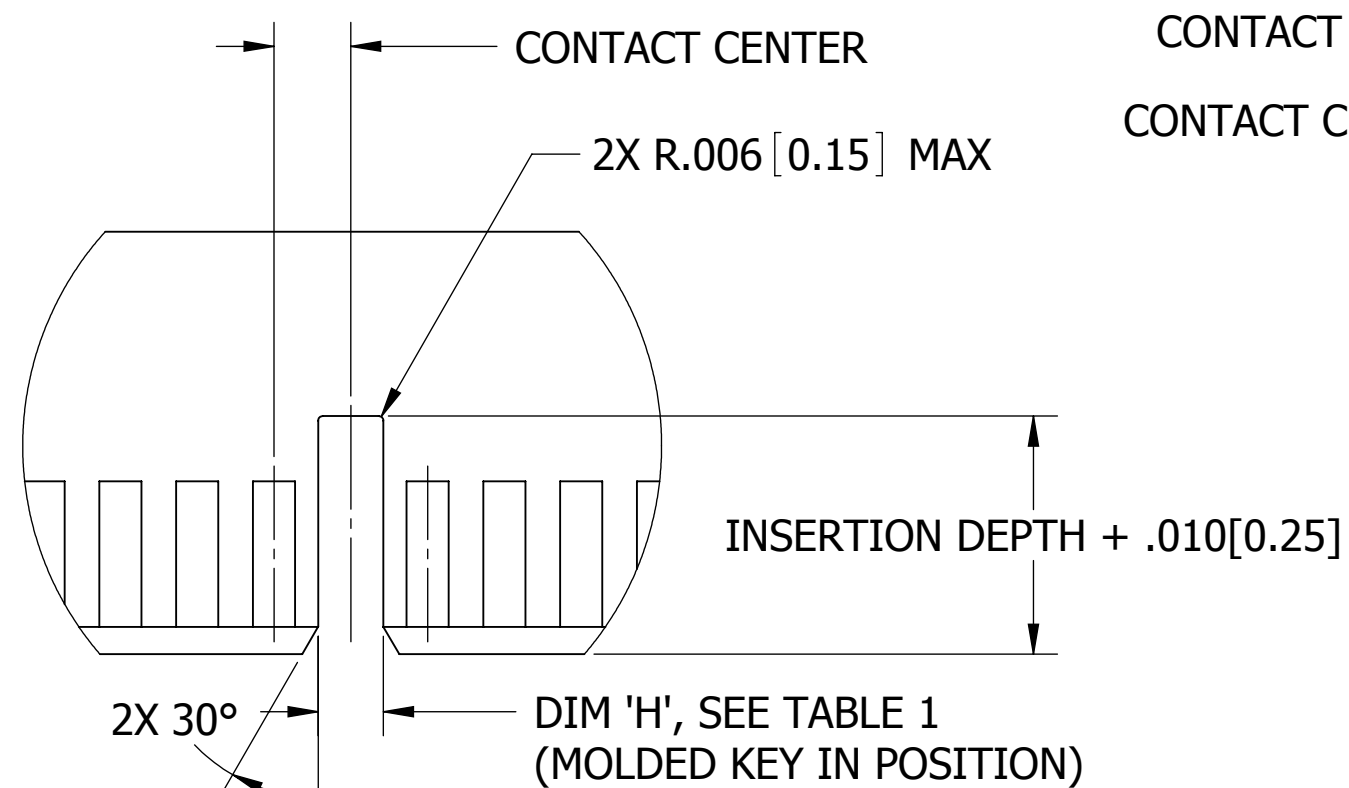


.031 ± .006 [0.79 ± 0.15] OR  
 .039 ± .006 [1.00 ± 0.15] OR  
 .062 ± .008 [1.57 ± 0.20] OR  
 .093 ± .008 [2.36 ± 0.20] OR  
 .125 ± .008 [3.18 ± 0.20]

REVISIONS				
REV.	ECO. NO	DESCRIPTION	DATE	BY
E	1768	ADDED NEW DIMENSION AND UPDATE NEW FORMAT	7/25/2008	IA
F	1934	EXTENDED THE PADS TO EDGE OF CHAMFER, DELETED .080 MAX DIMENSION, ADDED MOLDED KEY IN POSITIONS & BETWEEN DIM. TABLE, ADDED .031" & .125" PCB THICKNESS	3/19/2009	TT
H	2429	UPDATED PAD WIDTH TO .030 FOR .039 CC/.915 PROFILE (WAS .040), DIM 'H' IN TABLE 2 TO .019 (WAS .022), .030 (WAS .033), ADDED ±.002 TOLERANCE TO TABLE 1 & 2	8/15/2011	JH
J	3067	UPDATE .031 PCB TOLERANCE, ADD MM DIMENSIONS	9/22/2014	JHSU
K	3179	ADD 1mm THICK PCB DIMENSIONS, REMOVE BETWEEN-POSITION KEY FOR 1mm PITCH	3/27/2015	JHSU

**P/N'S CALLING OUT MOLDED KEY MODIFICATION**

.010 ± .005 [0.25 ± 0.13] (FOR .031[0.79] PCB)  
 .018 ± .005 [0.46 ± 0.13] (FOR .039[1.00] PCB)  
 .020 ± .010 [0.51 ± 0.25] (FOR .062[1.57] PCB)  
 .051 ± .010 [1.30 ± 0.25] (FOR .093[2.36] PCB)  
 .083 ± .010 [2.11 ± 0.25] (FOR .125[3.18] PCB)

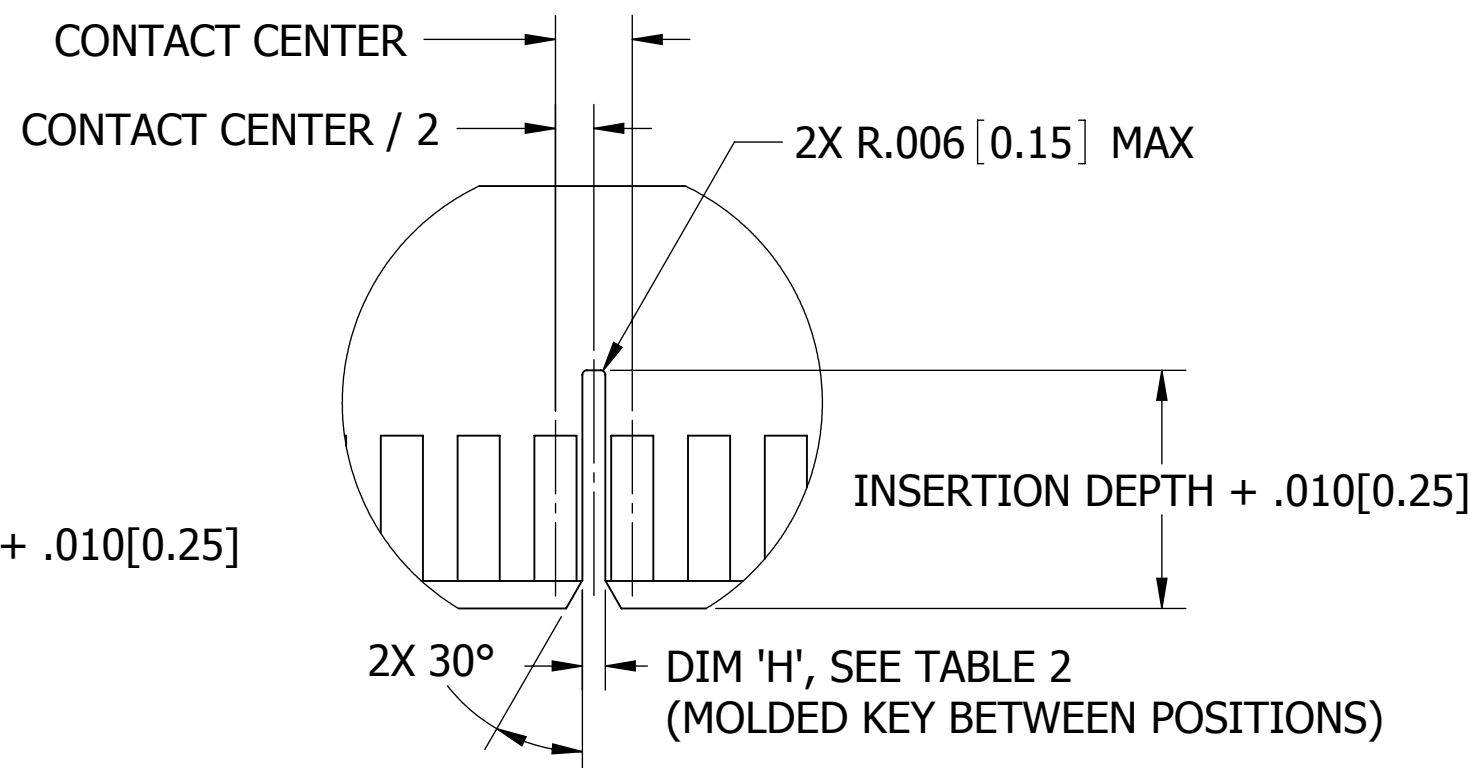


**MOLDED KEY IN POSITION (ONLY) LAYOUT RECOMMENDED**

TABLE 1:

CONTACT CENTERS		DIM 'H' (MOLDED KEY IN POSITION) (TOLERANCE: ±.002[0.05])			
		.431[10.95] BODY HEIGHT		.610[15.49] BODY HEIGHT	
INCH	MM	INCH	MM	INCH	MM
0.039	1.00	N/A	N/A	0.033	0.84
0.050	1.27	N/A	N/A	0.033	0.84
0.100	2.54	0.080	2.03	0.070	1.78
0.125	3.18	0.080	2.03	0.070	1.78
0.150	3.81	0.080	2.03	0.070	1.78
0.156	3.96	0.100	2.54	0.070	1.78

\* PRESS FIT, .031[0.79] x .062[1.57] PINS, .045[1.14] SQ. PINS, HIGH PROFILE MBB, AND ALL OTHER CONNECTORS NOT LISTED HERE. PLEASE CONSULT FACTORY

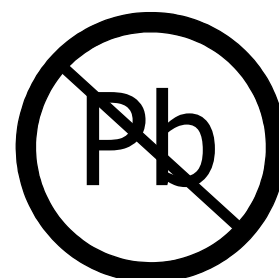


**MOLDED KEY BETWEEN POSITIONS (ONLY) LAYOUT RECOMMENDED**

TABLE 2:

CONTACT CENTERS		DIM 'H' (MOLDED KEY BETWEEN POSITIONS) (TOLERANCE: ±.002[0.05])			
		.431[10.95] BODY HEIGHT		.610[15.49] BODY HEIGHT	
INCH	MM	INCH	MM	INCH	MM
0.050	1.27	N/A	N/A	0.030	0.76
0.100	2.54	0.040	1.02	0.050	1.27
0.125	3.18	0.065	1.65	0.075	1.91
0.150	3.81	0.040	1.02	0.048	1.22
0.156	3.96	0.042	1.07	0.048	1.22

\* PRESS FIT, .031[0.79] x .062[1.57] PINS, .045[1.14] SQ. PINS, HIGH PROFILE MBB, AND ALL OTHER CONNECTORS NOT LISTED HERE. PLEASE CONSULT FACTORY



RoHS COMPLIANT

UNLESS OTHERWISE SPECIFIED: DIMENSIONS ARE IN INCHES [MM]	DRAWN	DATE	NAME	
		8/15/2011	JH	
TOLERANCES: ANGULAR: ± 30' .XX=± .02 [5] .XXX=± .005 [13] .XXXX=± .0005 [013]	THE INFORMATION HEREIN CONTAINS PROPRIETARY INFORMATION OF SULLINS ELECTRONICS AND IS NOT TO BE REPRODUCED, USED OR DISCLOSED TO OTHERS FOR ANY PURPOSE EXCEPT AS SPECIFICALLY AUTHORIZED IN WRITING BY AN OFFICER OF SULLINS ELECTRONICS.			TITLE
	INTERPRET DIMENSIONS AND TOLERANCING PER: ASME Y14.5M-2009			DAUGHTER CARD LAYOUT
PART NUMBER				N/A
SIZE	CAGE CODE	DWG. NO.	REV	
C	54453	900	K	
SCALE: 4:1			SHEET 1 OF 1	